

# FFA To Present Keystone Degrees To 204

(Continued from Page F26)

judging contest, which was held in October in Biglerville.

He said his supervised projects were in work experience, practicum skills, and production. For his work experience he was employed for Group Orchards Inc. His practicum skills project was restoring an antique tractor.

However, he said that he dropped the production project after unsuccessfully trying to maintain all three projects for a year. "I found that all three enterprises were too much to handle," he said. In addition to his projects, he also has served on his chapter's BOAC, treasurer, shop cleanup, and maintenance committees, and helped in all the fund-raising events, including picking apples for the chapter's annual cider sale.

Resh said that after he finishes high school, he intends to start working full time at Group Orchards Inc.

### Ronda Sue Ringler

Ronda S. Ringler, 17, daughter of Edwin and Darlene Ringler, East Earl, Lancaster County, has served as second historian for the Grassland FFA Chapter at Garden Spot High



School, during her three years as a member.

Ringler has earned her Greenhand and Chapter degrees and has served on the chapter's earnings, saving and investment, public relations, and citrus sales committees.

Among her achievements, Ronda has received a scholarship pin, was the top citrus salesperson, participated in state and judging competition and parliamentary procedure, and also in contests at the local and regional level.

Her FFA activities include two years work experience in the bakery department of Shady Maple, and one year with a dried flowers and crafts project.

She said that, after high school, "I would like to start my own craft business with my friend, who I have worked with on my SAE project."

### Melissa D. Ritchea

Melissa Dawn Ritchea, 17, daughter of George and Judith Ritchea, West Alexander, is president of the McGuffey FFA Chapter, having previously served as Greenhand



president, chapter secretary, and chapter treasurer. She is also a member of the county FFA board.

The recipient of the Greenhand, Chapter, and County degrees, she attended the national FFA convention in Kansas City and has been involved in the chapter's recreational and fruit sales committees.

Her projects include raising a dairy calf, and dairy cows, market steers, and breeding goats. She is also a member of the chapter's parliamentary procedure team.

After high school, she said she intends to attend a two-year school in West Virginia to learn radiology technology.

### Shawn Romesburg

Shawn Romesburg, 18, whose parents are Frank and Joyce Romesburg, Garrett, in Somerset County, has been a member of the Meyersdale FFA Chapter for four years and earned his Greenhand and Chapter degrees.

A member of the FFA basketball and volleyball leagues, he has also served as his chapter's treasurer. His projects were



in swine and poultry production. After school, he said he intends to attend ITT to study electronics.

### Clifford Ruffner

Clifford Ruffner, 17, son of Clifford and Alyce Ruffner, Marion Center, Indiana County, is parliamentary for the Marion Center FFA Chapter, with six years membership in the chapter.



He has served as his chapter's sentinel and earned his Greenhand and Chapter Farmer degrees and won awards for tractor driving and has been involved in a dairy production project and dairy judging. He has also been a member of the Food For America and banquet committees.

In the future, he said he plans to study agricultural mechanics.

### Bryan Sarver

Four-year Brothersvalley FFA member Bryan Sarver has served his chapter as chaplain and second vice president. Bryan, 17, son of Larry and Shirley Sarver, Garrett,



★ Visit Our Display at the PENNSYLVANIA FARM SHOW ★  
JANUARY 8th thru 13th (Spaces 120 - 128)



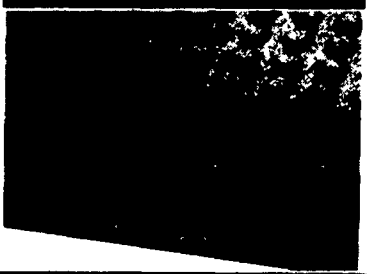
### LAPP

#### ENERGY FREE DRINKERS

- All Ages can drink from LAPP ENERGY FREE DRINKERS.
- No Electric Needed
- Keeps Water Cooler in Summer
- Rounded Corners, Better Safety
- Horses, Cattle, Sheep

- Provides safe and comfortable protection
  - Has textured non-skid surface
  - A clean non-absorbent material
  - Provides thermal barrier against cold and dampness
  - 12 Year Warranty
- Also ideal for: Walkways, wash racks, trailers and stock trucks - FREE SAMPLES

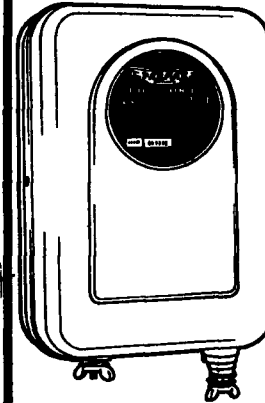
### HUMANE HORSE MATS



### HUMANE Anti-Fatigue Mats



- Beveled For Safety
- Surfaced For Traction
- Waffled For Comfort



### PARMAK

#### PARMAK STANDARD 12 (Model STD-12) 12-V. Bat. Operated

A new addition to the Parmak line of top quality electric fences. This low cost 100% solid state model is for indoor installation. Charges long lengths of fence. Housed in heavy deep drawn steel case with attractive baked enamel finish. Charges up to 15 miles of fence. UL listed.

#### SALES AND SERVICE

### PEQUEA BATTERIES

103B N. Ronks Rd., Ronks, PA 17572

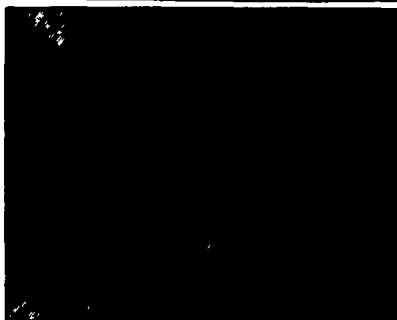
717-687-0880

Distributor & Warranty Station For Parmak



### HUTCH MOLDED POLY MINI BARN

- Accommodates 5 or 6 calves
- Easy to assemble & move
- Expandable
- Dimensions 7'Lx8'Wx4 1/2' H



### HUTCH MOLDED POLY CALF HUTCH

- Molded Poly 1 piece hutch with Rod & Lift Brackets
- Smooth on both sides
- Lasts longer than wood
- Easy to clean
- Warmer in winter, cooler in summer



### Stock & Utility Trailers

Check Our Quality & Prices

See Our Horse Display - Videos, Pictures  
Cook Forest Scenic Trail Rides, Etc.  
Horses For Sale - Appaloosa, Paints, Quarter

## WAYNE R. WYANT

BOX 200 HAWTHORN, PA 16230 PHONE 814-365-5100

### SOYBEAN ROASTING ON YOUR FARM



#### FULL-FAT ROASTED SOYBEANS For Maximum Feeding Value

- High energy, by-pass protein and palatability
- Toxic enzymes and molds destroyed
- Peak performance with retained oil and lecithin
- Improved Total Digestible Nutrients
- Ultimate rich peanutty flavor and aroma
- Dried as roasted
- Roast own grown beans - Avoid trucking and docking
- Economical and efficient for lower feed costs
- Ready for use or storage

#### Custom Roasting in PA and Surrounding States

David N. Groff  
RD 3 Lewisburg, PA  
(717) 568-1420

Schnupp's Grain Roasting, Inc.  
RD 6 Lebanon, PA  
1-800-452-4004  
717-865-8611

Horst Grain Roasting  
3040 Penns Grove Rd.  
Lincoln Univ., PA 19352  
(Chester Co.)  
(215) 869-8934

Roast-M-Matic Grain Roasting Sales-Service Custom Work  
Roast-Cool Unit Available