

**1a CONSTRUCTION EQUIPMENT**

**FORKLIFT GRADALL**  
534-B, Cummins power,  
8,000 lb. capacity, 4WD,  
1980, \$16,000.  
410-833-9091

**Case 252, 602, 1102 Rollers Demonstrators**  
**Call For Special Pricing**  
Case 1155E Crawler Loader, 4-in-bucket, excellent condition ..... \$49,500  
1979 Case 580C Loader backhoe (3) JCB 1400 B, Cab, extend-a-hoe, 4-in-1 buckets ..... \$16,500/ea.

**Vernon E. Stup Co.**  
5859 Urbana Pike  
Frederick, Md. 21701  
301-663-3185

**WELDER LINCOLN w/271**  
Detroit, on whls, 300 amp,  
\$1,200. 410-833-9091

**WHEEL LOADER CAT**  
950, 81J 12000 Series,  
1978 w/cab, 1 owner,  
\$32,000. 410-833-9091

**WHEEL LOADER TROJAN**  
164, Detroit power, runs well, \$3,600.  
410-833-9091

**WANTED: Gas tank for Ford 4000 tractor.**  
201-839-9053.

**WANTED. Guage wheel assembly for John Deere 14T baler.**  
201-839-9053.

**NH #8 forage wagons for parts; NI #10A manure spreaders needing rebuilt.**  
717/532-3989 call before 8:30pm

**Spoke type flotation tires and rims. Also, want to rent land.** York 717-292-6821

**Old tractor or horse drawn road grader, useable condition. Also horse drawn dump rake, useable condition (609) 466-3596 Evenings**

**SPECIAL PRICES ON SKID STEER LOADERS**

'86 JD 555B crawler loader ..... Call  
JD 510C 4WD, 1100 hrs. .... Call  
JD 450 Dozer ..... \$6,500

**JD Construction Equipment**  
Thomas Skid Steer Loaders,  
Sales and Service

**J D EQUIPMENT**  
Pennsburg, PA 18073  
215-679-5958

**2 FARM EQUIPMENT WANTED**

**WANTED. Farmall cub Lo-3oy, needing work, OK, reasonably priced.**  
201-839-9053

**WANTED: Gehl grinder mixer w/21" grinder, used or abused. Will pay according to condition**  
717/529-2803

**WANTED: John Deere #11 trail type (2 wheel) sickle-bar mower or similar JD mower.** Call 201-839-9053.

**WANTED: Woodchipper towable, one w/4 cyl. engine or 3pt hitch.**  
201-839-9053.

**WANTED: Wide front for Farmall H.** 201-839-9053.

**WANTED:**

**USED FORD & KUBOTA TRACTORS**

**Call 717-949-2000 Daytime**

**3 SILOS AND UNLOADERS**

**SKID STEER LOADERS**

MODEL	YEAR	INDEX #	SERIAL #	PRICE
Bobcat 741	1989	903675	20039	\$ 7,000
Mustang 940	1990	903679	1424257	\$10,000
Mustang 940	1990	902081	0420603	\$12,500
Mustang 940	1990	903682	3801623	\$11,500
Mustang 940	1989	903690	9404336	\$11,000
Mustang 552	1986	903673	618294	\$10,500
Mustang 442	1986	903680	633208	\$ 9,500
Mustang 342	1986	903678	633318	\$ 7,500
Toyota SDK10	1990	902083	10381	\$14,500
Toyota 3SDK4	1989	902079	10587	\$ 4,000
John Deere 300B	1985	903677	718956	\$ 7,500

**OTHER ITEMS & ATTACHMENTS**

Kent Hammer 200-300		903691	3717	\$ 4,900
Zimmerman Trailer	1993	300179	8414	\$ 3,500
6 Kent Hammer	New			\$ 7,500
3 Rock Hounds	New & Used			Make Offer
4 Backhoes	New			Make Offer
3 Alltec Planers	New			Make Offer
2 Grapples				Make Offer
60" Pickup Broom				Make Offer
Stump Grinder				Make Offer
Skid Mixer				Make Offer
York Rake				Make Offer
5766 Trencher	1989		630	\$ 4,000

**ALL OFFERS WELCOME**

**Call Tom Rosser 215/245-2749 Philadelphia, PA**

**Giles & Ransome**



**2 FARM EQUIPMENT WANTED**

**FARMERS WANTED!**

**GET IN GEAR with GIBBS BRAND**

**GIBBS SIZE!**

"I saw GIBBS and I had to have it! I just keep finding stuff to put it on!"  
-Gilbert Key  
Key Packaging Co

**FIRST PATENTED PENETRANT, RUST REMOVER, SURFACE WATERPROOFER**

PREVENTS EQUIPMENT DETERIORATION & WEAR!  
UNLOCKS STUCKFAST MACHINERY AND LIMBERS UP TIGHT ENGINES!  
MAINTAINS BUILDINGS AND ALL EQUIPMENT, FEEDERS, MACHINERY, ETC!  
GIBBS STOPS RUST AND CORROSION DEAD IN ITS TRACKS!

**100% SAFE**  
GIBBS CONTAINS  
NO WAXES • NO ACIDS  
NO CORROSIVES • NO SILICONES  
NO ABRASIVES • NO TEFLON  
NO GRAPHITE • NO ARSENIC  
NO KEROSENE BASES  
NO MASKING PERFUMES  
MADE IN THE U.S.A.

**CONTACT YOUR LOCAL SUPPLIER**

**NATIONWIDE ORDER LINE : 800 - GIBBS YA**  
OR FILL OUT & MAIL THIS FORM

**YES! LEMME GIT GIBBS!**

Send Home/Bike Starter Set @ \$6.00 (2 Jr. Size for \$5 plus \$3 S & H) = \_\_\_\_\_

Send Mechanic/Trucker Starter Set @ \$14.00 (1 each size for \$10 plus \$4 S & H) = \_\_\_\_\_

Send Farm/Shop Trade Packs @ \$24.00 each (4 lg. size for \$19 plus \$6.00 S & H) = \_\_\_\_\_

NAME \_\_\_\_\_ Phone \_\_\_\_\_

UPS Street Address \_\_\_\_\_

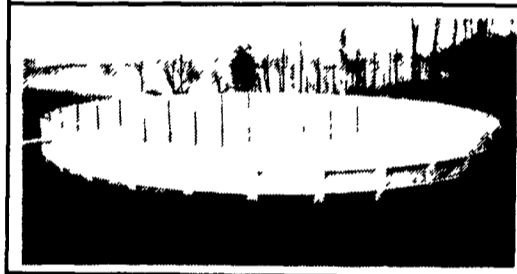
City \_\_\_\_\_ State \_\_\_\_\_ Zip \_\_\_\_\_

SEND TO: GIBBS Brand, PO Box 506, Carlisle, PA 17013 Enclose Check or Money Order made out to GIBBS (US Funds)

**★ STAR SILOS ★**

**Precast Concrete Storage Tanks... the concrete advantage**

- Durable and Maintenance Free
- Cost Effective
- Quality Control
- Appearance
- Fewer Joints
- Watertight Construction
- Full Height Panels
- Extensive Range

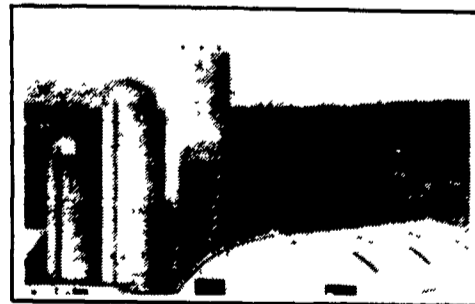


**Bunker Silos... the concrete advantage**

- Fast Installation
- Low Cost • Durable
- Moveable • Attractive
- Quality Storage for corn silage, haylage and high moisture ground ear corn.
- Other Uses — Storage for bulk materials, retaining walls and manure pits.



- Poured Concrete Silos
- Energy-Pak Bottom Unloading With Little David Ring Drive Unloaders
- Star "Toppers"
- Precast & Poured Manure Storage Structures - SCS
- Precast Feed bunk & Cattle Guards



**...Committed to superior performance in Forage Management Systems.**

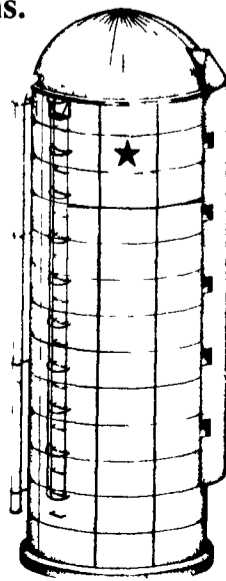
**See Us At The PA FARM SHOW**

**★ STAR ★ SILOS**

**VAN DALE Service & Equipment Dealers**

**717-866-5708**  
630 E. Lincoln Avenue  
Myerstown, PA 17067

**After Hours Call:**  
**Robert Brubaker**  
717-464-3136  
**John Swope**  
717-933-4758



**DISMANTLING FOR PARTS:** Just arrived for parts: JD 510 w/fair tires, (no engine available). Hoe parts, trans parts, loader parts available. **BALANDA EQUIPMENT**  
P O Box 407 RT 29  
Palm, PA 18070.  
1-800-322-8030

**JD 750D long track dozer**  
89, 1300 original hours, OROPS, straight blade w/tilt, original owner \$59,000  
**JD 860 elevated motor scraper** \$15,000. Allatt 200G grader w/scarifier hydrostatic drive articulated, 200hrs, excellent condition, one owner, 29,000  
**Euclid R15 rock truck**, good condition, \$11,000.  
**Atlas 175cfm air compressor**, Deutz diesel, \$2,000. (717)865-4534.

**O-Frick sawmill complete w/471DD, 54" saw, 5hdblk steel carriage, sawdust drag rollers, grinder, \$6,000. 175HP Cummins power unit, \$3,200. 6 blades f/54" band resaw, \$500. (215)431-2987.**

**Pettibone forklift 4WD, 4000lb lift, 28' high, excellent condition, \$10,000; KD forklift, rough terrain, Ford 4000 engine, 4000lb lift, 21' reach, \$3500. 717/532-9190.**

**Rammax trench roller, 24" & 33" drums, good condition, \$7500. 215/942-9702.**

**SKID LOADER HYDROMACK 12C w/water cooled engine, runs excellent, \$3,200. 410-833-9091**

**WANT TO BUY all makes and models of construction equipment.**  
(301) 694-6148,  
(301)371-9299 fax.