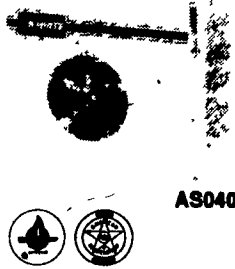


HEATING

NEW **Model AS040**
Variable BTUH (15,000-40,000)
Pilot Light Ignition

- Dependable • Safe
- Durable

- Features:**
- Pilot Light Ignition
 - Fully Protected Gas Valve
 - Variable BTUH Output
 - Eyebolt and Chain Mounting System
 - Internal Gas Pressure Tap
 - Ten-Year Warranty



AS040

Bottom-Draw 170,000 and 200,000 Btuh Pilot-Ignition Agricultural Heaters

- Durability
- Safety
- Performance
- Quality

- Features:**
- Enclosed Case
 - "Pop-Top" Take-apart Pilot System
 - Terminal Strip with Full Protection Cover
 - Fully Protected Gas Cover
 - Eyebolt and Chain Mounting System

AB170/AB200
• Certified under A.G.A. Agricultural Requirement 5-88

Demand quality, Demand the best... Demand L.B. White

VERTICAL VENTURI GAS BROODERS
Shenandoah

25,000 to 40,000 BTU
30,000 BTU Standard Size



The experience proven and efficiency tested brooder provides the outstanding flame quality needed to provide up to a 1250 chick brooding area.

The vertical venturi preheats the air and gas for efficient burning and delivers the rated BTU output selected. It is designed for labor saving maintenance procedure and trouble free operation. By selecting the BTU output desired various options are available to the grower at the same price. It is easy to modify in the field by changing the

main burner orifice. The rigid spun-steel hover is made of 24 ga. galvanized steel and is 48 1/2 inches in diameter. It is stamped and beaded for strength and assured long life. It comes complete with leveling chains and hooks.

The 110-S Control combines a snap-action thermostat with 100% safety valve. It is calibrated for brooding temperatures from 78° to 110°.

MODEL AW 230
Agricultural Heater
Variable 100,000-230,000 Btuh

Nobody does it better

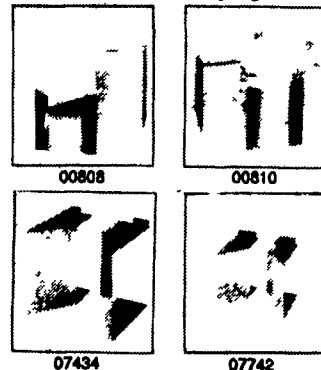
- Features:**
- Variable Btuh Output
 - Totally Enclosed Case
 - Fully-Hinged Access Panels
 - Eyebolt and Chain Mounting System
 - "Master Control" Panel
 - 24 v. Control System
 - "System II" Hot-Surface Ignition (HSI) System
 - Versatile

Demand Quality... Demand The Best... Demand

AIR DIVERTERS
Nobody does it better

- Durability
- Performance
- Safety
- Quality

- Features:**
- Low Cost
 - Efficient Design
 - Easy Installation
 - Adaptable
 - Versatile
 - Galvanized Construction
 - Lightweight

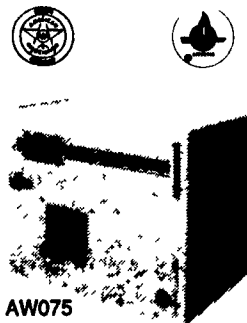


07434

07742

Outdoor/Indoor Variable Btuh Agricultural Heaters
(45,000-75,000 Btuh) with Hot Surface Ignition

- Durability
- Performance
- Safety • Quality



AW075

- Features:**
- "Master Control" Panel
 - Totally Enclosed Case
 - Hinged Access Panels
 - Variable Btuh Output
 - Exclusive "System II" Hot Surface Ignition (HSI).

It's time to change your bulb®

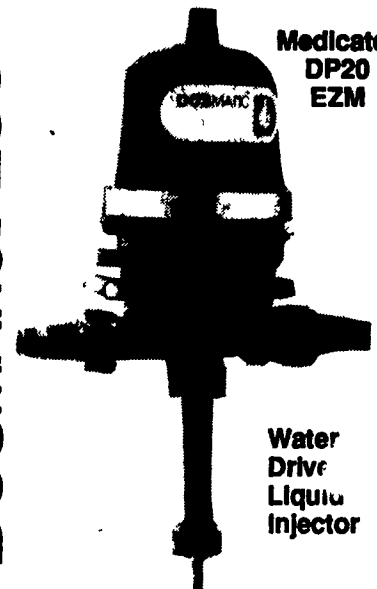
PAR HEAT LAMP

- Features/Benefits:**
- 175W
 - 30%

Wattage Reduction. Savings Of Over \$37 Per Lamp Over The Life Of The Lamp = Energy Saving • Long Life

MEDICATORS

DOSMATICPLUS

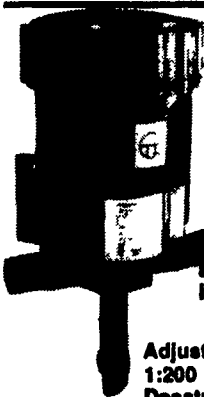


Medicator DP20 EZM

Water Drive Liquid Injector

SPECIFICATIONS:

Minimum flow:	2 GPH
Maximum flow:	1200 GPH
Minimum Pressure:	3 PSI
Maximum Pressure:	100 PSI
Max. Operating Temp.:	100 F
Connection:	3/4" GHT/1" NPT
Optional Connection:	3/4"/1" BSP
Ratio:	0.2% To 2.3%
Dimensions:	21"x8"x8"
Weight:	5 Lbs.



DOSATRON
LIQUID DISPENSER

Accurately Meter... Antibiotics • Coccidiostats • Drugs • Disinfectants • Sulfas • Vaccines • Wormers • Vitamins • Fertilizers • Chemical Additives... Into livestock and poultry drinking water or into irrigating systems.

7 GPM MODEL

Adjustable ratios: 1:100, 1:128, 1:200

Dosatron 7 GPM Technical Specifications:

Adjustable Ratios:	1:100, 1:128, 1:200
Minimum Flow:	13 GPH
Maximum Flow:	400 GPH
Min. Oper. Pressures:	7 PSI
Max. Oper. Pressures:	72 PSI
Connections:	3/4" NPT
Dimensions:	Height 11" Width 8"
Weight:	3.5 lbs.

Accu-DOS

New Generation

11 GPM and 40 GPM MODELS

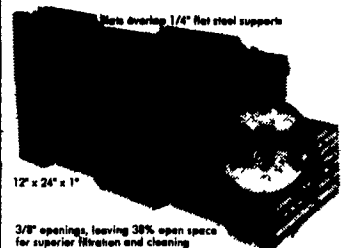
Technical Specifications:

Minimum Flow:	11 GPM 2.64 GPH	40 GPM 1.0 GPM
Maximum Flow:	660 GPH	2400 GPH
Min. Oper. Pressures:	2 PSI	2 PSI
Max. Oper. Pressures:	90 PSI	110 PSI
Temperature:	120° F	120° F
Connections:	1/2" NPT	1/2" PVC
Dimensions:	Height 18 1/2" Width 6 1/2"	20" 12"
Weights:	4.4 lbs.	9 lbs.



FLOORING

Maxima Nursery/Grower Flooring!
low cost, new design...



the maximum in "Thermal Comfort"

- Filter-Ease® polypropylene provides warmth and comfort for the piglets and will not rob them of precious body heat.
- Surface has a slight texture for better footing.
- Inverted teardrop design for maximum filtration.
- Full 10 year non-prorated warranty.

Most Cost Effective on the Market!

The simplified and economical support system, new interlocking feature, inverted teardrop design, slightly textured surface, polypropylene construction, and warranty all make Maxima the lowest and most cost effective slat on the market.

This polypropylene slat is designed to hook over steel support beams. Tabe on the end and side interlock to secure the floor.

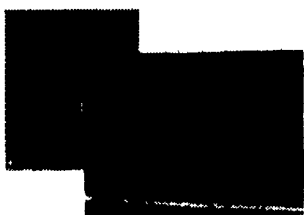
The slightly textured surface provides better footing without being abrasive. The inverted teardrop design allows for maximum moisture filtration.

Save Energy Costs... Turn Temp Down

Maxima slats provide "thermal comfort" for your pigs and do not rob them of body heat. The feed they eat is turned into pounds instead of being used to keep them warm. The producer can actually save on energy costs by operating at lower temperature settings.

nooyen "UNO-SLIP"®

traction break system
A patented system in the Nooyen flooring system which prevents the cows from slipping.
UNO-SLIP® is for the farrowing pens



TANDEM PRODUCTS, INC.
LIVESTOCK EQUIPMENT

Tenderfoot/NS

For Small Animals Up To 100 Lbs.

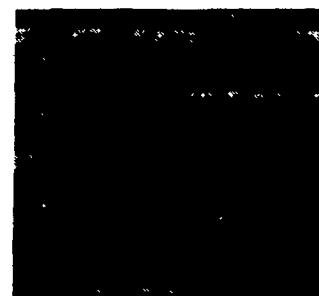
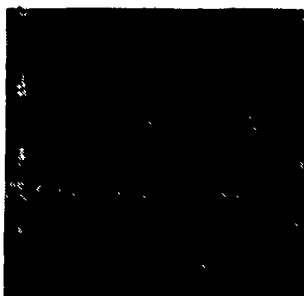
Tenderfoot/NS (Nursery) is specifically designed for use in standard nurseries and will accommodate pigs up to 100 lbs. Tenderfoot/NS is also used for many other small animal applications such as zoos, dog kennels, etc.



A Softer, Warmer, Bedding-Type Environment
When installed in the outer edges or creep area of a farrowing crate, Tenderfoot/NS will great your newborn piglets with a soft warm bedding-type environment. Those painful and costly bruises, abrasions and other discomforting problems are greatly reduced! Tenderfoot/NS is gauge expanded metal has hole openings that measure 7/16" x 3/4".

BOSS HOG FLOORING FOR ALL CONFINEMENT NEEDS

"New" Size 3/8"x3" - 5/16" Wire In Stock
3/8"x2 - 5/16" Wire 3/8"x1 1/2" - 243" Wire



24 Hour Service

Check Our Warehouse Prices

WE SHIP UPS

Swine & Poultry Systems Specialists

FARMER BOY AG.

410 E LINCOLN AVE

MYERSTOWN, PA 17067

PH. 717-866-7565

Full Line Of Parts In Stock For Your Poultry And Hog Needs

Hours:
M-F 7:00-5:00;
Sat. 7:30-11:30

