

Lamb Video Program Set

LANCASTER (Lancaster Co.) — The Lancaster County Sheep and Wool Grower's Association and Penn State Cooperative Extension present "Lambing Time Management," featuring Dr. Don Bailey with Dr. Woody Lane. This program is an outstanding series of videos with step-by-step instructions on all the critical procedures that you need to know during lambing season. This is

when many questions often arise. The program will be presented at 7:30 p.m. on the following three dates:
 • January 18 — Tape #1 "The Pre-Lambing Period" covers abortions, vaccinations, nutrition, management tips, prolapse, and worming (51 minutes).
 • January 24 — Tape #2 "Lambing" covers sheep obstetrics, difficult births (malpresenta-

tions), unassisted lambing, and reviving newborn lambs in distress (48 minutes).
 • January 31 — Tape #3 "The Post-Lambing Period" includes clip dip and strip, correcting teeth, tubing, caring for chilled lambs, docking and castration, mastitis, entropion, and nutrition (37 minutes).
 For more information, call (717) 394-6851.

SDFC Presents Quality Award

SENECA FALLS, N.Y. — This year's winner of Syracuse Dairy Farmers Cooper-

ative's "Outstanding Quality Award" was Tamara Crego of Baldwinsville, New York. This award is presented annually to the member of the cooperative who has scored highest for milk quality during the past year. The award was presented to Ms. Crego at the Syracuse Dairy Farmers annual meeting.

James Patsos, president of United Ag Services, sponsor of the award, commended Ms. Crego and all members of Syracuse Dairy Farmers for their continued production of quality milk.

Second place award went to Jonalpa Farms of Baldwinsville. Jonalpa Farms is a regular contender for the quality award.

Syracuse Dairy Farmers Cooperative is located in Onondaga County. Their members have been long recognized for producing quality milk. As a result of their commitment to quality, Byrne Dairy Farms of Syracuse has recently signed a long term contract to purchase their milk.

United Ag Services annually provides quality awards to the top producers in their member cooperatives. United Ag Services provides quality control, accounting, marketing, payroll, and management services for small to medium size agricultural organizations.

For more information contact United Ag Services, at 12 North Park Street, Seneca Falls, New York 13148, or phone (315) 568-2750.

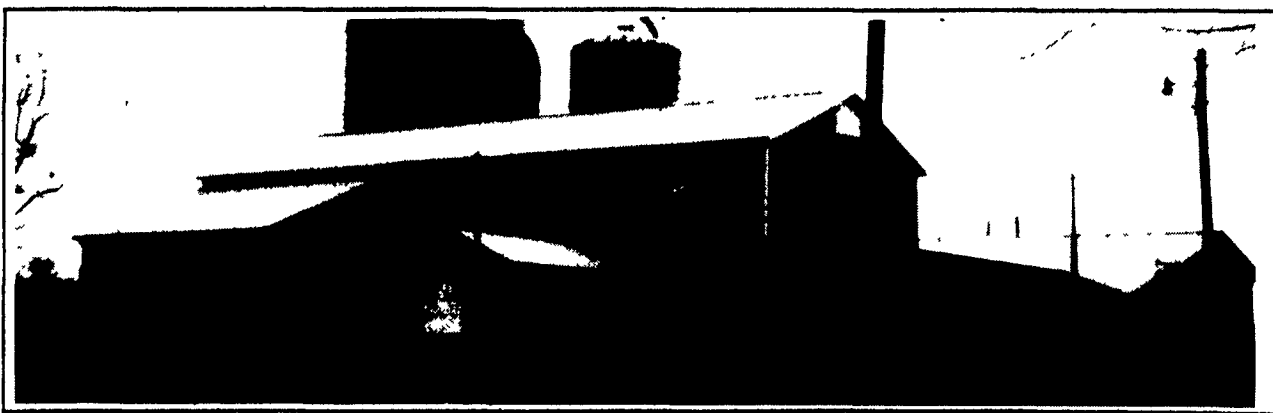
OPEN HOUSE

TOM & LUCILLE SHUEY

RD#2 Annville, Lebanon County, PA

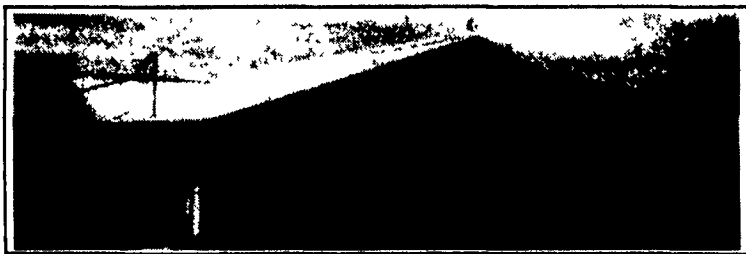
Barn & Sheds Destroyed In Fire In February Of 1993.

Tuesday January 4 • 10 A.M. to 2 P.M.



Pancakes
Sausage
& Coffee

DIRECTIONS: Rt. 22 East Of Harrisburg, 2 Miles East Of Annville/Indiantown Gap - Rt. 934 Exit, Turn North At Country Apple Restaurant Onto AWOL Road, Go Approximately 1 Mile & Turn Left Onto Reeds Creek Road. 1/2 Mile To Shuey Farm.



- New 38' x 97' Barn, Laminated Beams And Posts
- New 20' x 45' Holding Area And Maternity Pens
- New Milk House And Parlor
- Surge Easy Double 8 Parallel Milking Stalls By Kipe Steel
- Surge Receiving Equipment
- 2,000 Gal. Mueller Hiperform Milk Tank & Plate Cooler
- E.R. Shamber Welding, Fencing & Gates
- 20' x 80' Harvestore Silo

SURGE Parlor & Milking Equipment From
HOSTETTER SURGE
 RD 2, ANNVILLE, PA 717-867-2896
 10% Discount On Surge Products Purchased Day Of OPEN HOUSE
 • NEW TRU-FLOW MILK FLOW INDICATOR
 - Instant milk yields - End-of-milking (EOM) indication
 - Milking time & average milking time
 • NEW SURGE MINI ORBIT 2000
 - Highest capacity, fastest flow & best visibility milking unit on market now equipped with auto shut off.
 EXPECT MORE.

KIPE STEEL INC.
 3791 Church Road
 Chambersburg, PA 17201
 717-264-1185
 800-492-4797
 Fax 717-267-1580
 Wil Godwin 301-791-5024
 • Custom Fencing • Crowd Gate • Herringbone Milking Parlor

E.A. BRENSINGER
GENERAL CONTRACTOR, inc.
 Lebanon, PA 717-274-0130
 WE BUILD ANYTHING
 Specializing in...
 POLE BUILDINGS
 AGRICULTURAL BUILDINGS
 SMALL COMMERCIAL
 RESIDENTIAL ROOFING
 RESIDENTIAL SIDING
 NEW HOMES

RUFUS BRUBAKER REFRIGERATION
 Dairy Farm Equipment
 Northern Service Center
 541 Frystown Road
 Myerstown, PA
 717-933-4711

MANUFACTURERS OF:
 GLU-LAM ARCHES ROOF TRUSSES
 GLU-LAM BEAMS FLOOR TRUSSES
 GLU-LAM TREATED POSTS T&G AND V-GROOVE DECKING
RIGIDPLY RAFTERS
 701 EAST LINDEN ST.
 RICHLAND, PA 17087
 WE CUSTOM DESIGN OR MATCH EXISTING BUILDINGS
 COMPLETE LINE OF POST FRAME BUILDING MATERIALS
 CRANE SERVICE

PENN JERSEY PRODUCTS, INC.
 P.O. Box, New Holland, PA 17557-0007
 Phone: (717) 354-4051 Fax (717) 355-9308
 See Back Page Section A
 New and Pre-owned Harvestore® and Slurrystore® Systems

Wiring By...
David W. Hahnlen
 Electrical Contractor
 Box 485 R.D. 2
 Annville, PA 17003
 Phone: 717-865-4804
 Harrisburg: 717-232-4804
 Fax: 717-865-0474

LASH PLUMBING & HEATING INC.
 1754 RT. 72 NORTH
 LEBANON, PA 17042

FENCING, GATES & FABRICATING BY
E.R. SHAMBER WELDING
 RD#1, BOX 1560
 JONESTOWN, PA

FOR SALE
AIR COMPRESSORS
 Quincy Model 5120,
 2 stage, 25 HP,
 Completely Rebuilt
\$2800.00
 Quincy Model 350,
 2 stage, 10 HP,
 Rebuilt
\$1665.00
 Quincy Model 340,
 2 stage, 7 1/2 HP,
 Rebuilt
\$1095.00
 Ingersoll-Rand Type 30
 2 stage, 5 HP Rebuilt
\$365.00
 Rebuilt Quincy 3 &
 5 HP Single stage and
 2 1/2 & 5 HP 2 Stage
 compressor in stock
 "We Install Compressors"
 For Service Call
 Blevins (717) 529-8458
STAUFFER PUMP WORKS
 501 Coopers Drive
 Kirkwood, PA 17536
 Samuel S. King, owner