

1a CONSTRUCTION EQUIPMENT

175Hp Cummins diesel, model H743P175, w/over center clutch and torque convertor. \$5,000 OBO (717)529-2347 before 9am or 6-8pm

1988 Case 580K cab, 1300 hrs \$24,900 1988 Komatsu D57-S, 2 1/2 yd ROPS, 1800 hrs, \$47,500/OBO 1981 Dresser 175C, 2 1/2 yd, 4in1, \$24,000/OBO 1987 JCB-525B loadall forklift/ loader, 1400 hrs, \$24,900/OBO 35 ton stiff neck tandem axle trailer, \$3,000 Michigan 125A, 3 yd, payloader, cab/heat, \$6,900 Hough 50, 2 yd, payloader, cab, \$5,900 9 Dow tag-a-long \$2,700, 6 ton \$1,200 HIUAB HD knuckleboom, \$2,995 (609)466-2953

1989 Kubota R410 wheel loader w/dsl engine, \$12,500 800/443-9580.

DISMANTLING FOR PARTS Just arrived for parts AC 655 loader w/4 in 1 bucket, good 2200 series engine, fair U/C, good clutches, and final drives available All parts available

BALANDA EQUIPMENT
P O Box 407 RT 29
Palm, PA 18070
1-800-322-8030

CAT D6B dozer, 10 foot blade, good condition, tracks 95%, excellent running condition, \$14,000. 717-776-6612

CAT D7, 4T, 90% UC, CCU, no blade, runs well, \$3,000 410-833-9091

WANTED USED band saw mill or portable circular mill 410/820-2191 evenings

WHEEL LOADER CAT 910, 1974, ready for work, \$13,000 410-833-9091

WHEEL LOADER TROJAN 164, Detroit power, runs well, \$3,600 410-833-9091

FORKLIFT PETTIBONE SUPER 6, Detroit power, rebuilt engine & trans., \$6,500 410-833-9091

FORKLIFT GRADALL 534-8, Cummins power, 8,000 lb capacity, 4WD, 1980, \$16,000 410-833-9091

DISMANTLING FOR PARTS Just arrived for parts JD 690B excavator, damaged engine BALANDA EQUIPMENT P O Box 407 RT 29 Palm, PA 18070 1-800-322-8030

Pettibone forklift 4WD, 4000lb lift, 28' high, excellent condition, \$10,000; KD forklift, rough terrain, Ford 4000 engine, 4000lb lift, 21' reach, \$3500 717/532-9190

SKID LOADER HYDRO-MACK 12C w/water cooled engine, runs excellent, \$3,400 410-833-9091

WHEEL LOADER CAT 950, 81J 12000 Series, 1978 w/cab, 1 owner, \$32,000 410-833-9091

WELDER LINCOLN w/271 Detroit, on whls, 1,300 amp, \$1,200. 410-833-9091

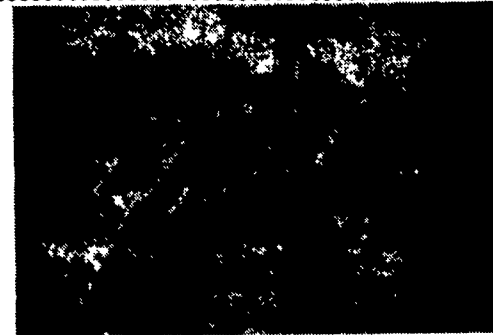
WANT TO BUY all makes and models of construction equipment. (301)694-6148. (301)371-9299 fax.

Case Cat 1, 3pt. mod hitch assembly, mounts in place of backhoe on 580A or 580B, \$650 OBO 215/584-0494.

Case 252, 602, 1102 Rollers Demonstrators Call For Special Pricing

Case 1155E Crawler Loader, 4-in-bucket, excellent condition \$49,500
1979 Case 580C Loader backhoe (4) JCB 1400 B, Cab, extend-a-hoe, 4-in-1 buckets..... \$16,500/ea.
Zoom Boom 34' forklift..... \$27,500

Vernon E. Stup Co.
5859 Urbana Pike
Frederick, Md. 21701
301-663-3185



Cat 931B Loader
With Backhoe 4-1 Bucket
3 Spd. Reverse, Sealed,
Lubricated U/C, Excellent
717-742-2712

FORKLIFTS

2,000 to 15,000 Lb.
\$1,000 to \$12,000
Gas/LP-Diesel-Electric
Cushion-Pneumatic-Rough Terrain
New Komatsu Forklifts Available

PA INDUSTRIAL EQUIPMENT
(215) 326-7090

FOR NEW AND USED CONSTRUCTION EQUIPMENT PARTS AND ATTACHMENTS CALL

H.E.L.P., INC.
1-800-446-0505

Specializing in Caterpillar Parts also available for Case, John Deere, IHC, Fiat, Etc. National Locater Service Available

HEAVY EQUIPMENT LOADER PARTS, INC.

R.D. #2 Box 2230 Route 22
Grantville, PA 17028

PARTS PRICED RIGHT DISMANTLING MOST MAKES & MODELS OF CONSTRUCTION EQUIPMENT

Cat IHC Gallon
Case Michigan Wabco
John Deere Hough Dynahoe
Trojan Terex Koehring
Drott Hein Werner AC/Flat Allis & Others

Over 600 Machines Dismantled
NATIONWIDE PARTS LOCATING SERVICE
We have two Computer Parts Locator Networks Nationwide & Canada, ready to serve you. In less than a minute over 400 Used & New Parts Dealers will receive your parts request. Parts are located easily & at substantial savings Try Our Services

Save \$\$\$ Parts Shipped Anywhere Direct To You. All Parts Guaranteed "We Return All Phone Calls"

BALANDA EQUIPMENT CO., INC.

P.O. Box 407 • Route 29 • Palm, PA 18070
Phone: (215) 679-3900
• Fax: (215) 679-9727
TOLL FREE: 1-800-322-8030



WENGERS, INC.

251 South Race St., Myerstown, PA 17067

717-866-2130

HOURS: Mon.-Fri. 7:30 to 5:00; Sat. 7:30 To Noon

NIGHTS. PHONE.

717 866-7147
717-273-9089

FAX

717-866-4300



Ford 800 Tractor Loader, Gas, 3 Pt., PTO, Power Steering, Full Hydraulics. \$4,900



Advance 5600D Sweeper- Diesel, Hi Dump, Cab, Hydrostatic, Runs Good. \$5,900



Transport 35 Ton Detachable Trailer, Pony Motor, 15" Tires, Good Condition, Non-Ground Bearing. \$9,900



Hough 90 Diesel Loader, Runs But Needs Some Work. \$3,500



1988 Vermeer 1200 Wood Chipper, 1661 Hours, Ford Gas, Runs Good. \$6,900



Tow Behind Cinder Spreader, I Have 2. Each \$1,000



1977 Fiat 345B Wheel Loader With Forks, Diesel, Articulated. \$9,500



Miller 14' Offset Disc, Good Condition. \$3,900

1987 Honda Accord LXI, 5 Spd., Air, New Insp., AM-FM Cassette, All Power Options Including Sunroof, 93K Miles, Very Clean In And Out, Drives Super. \$5,450



1988 Honda Accord 4 Dr., 5 Spd., Air, AM-FM Cass., 77K Miles, Runs Good, Blue. \$5,450

TRUCKS/CARS

1977 Ford F350 28' Bucket Truck..... \$3,500
1986 Chevy Silverado Pickup..... \$3,700
1972 Ford F600 Dump - Gas..... \$3,900
1987 Honda Accord LXI - Clean..... \$5,450
1988 Honda Accord - 4 Dr - 5 Spd..... \$5,450
1987 Honda Prelude SI-5 Speed..... \$5,650
1977 Ford F700 Bucket Truck..... \$5,950
1989 Acura Legend L Sedan-Auto..... \$14,500
1970 Vette Conv. - Low Miles - Red.. \$18,500

MISCELLANEOUS CONSTRUCTION

(50) New & Used Hoe Buckets..... COME SEE
(50) Loader Buckets..... COME SEE
(50) Set Forklift Forks..... COME SEE
Tree Planter - 3 Point..... \$795
(2) Cinder Spreader - Each..... \$1,000
Ripper For Crawler..... \$1,000
(2) Essick 1 Ton Roller..... Each \$1,450
Sweeper - Pull Type - Gas..... \$1,800
(6) Demolition Hammers..... Each \$2,500
Schramm 160 Air Comp..... \$3,000
Large Snowblower For Loader..... \$3,000
Vermeer Stump Grinder..... \$3,500
IH 140 w/Power Broom- 1972..... \$3,900
Miller 14' Offset Disc..... \$3,900
(5) Sheeps Foot 2 Drum Roller..... \$2,900/\$4,500
Vermeer T218 Tree Spade w/Trailer.... \$4,900
Advance Retriever 5600D Sweeper..... \$5,900
Gallon 503 Grader - Gas..... \$6,900
Vermeer 12" Brush Chipper - Gas..... \$6,900
IR 160 Diesel Compressor - 1990..... \$8,500
JD 760 Scraper..... \$9,900
Tampo RS28B 84" Vib. Roller..... \$17,500
Fiat FG85 Grader - 1982..... \$18,500
Tampo RS28D 84" Vib. Roller - 1982..... \$24,500
JD 690B Excavator - 1982..... \$29,500

CRAWLER LOADERS

Cat 977H - As Is - 1962..... \$3,900
IH 500C - 1969 - 4 In 1..... \$4,800
JD 450 - 1966 - Diesel..... \$5,000
JD 350 Diesel - ROPS - 1969..... \$6,500
Cat 941 - Diesel - 1968..... \$9,500
Case 1155D - 4NI - 1983..... \$24,500
CAT 983 - Cab - 1969..... \$28,500

TRAILERS

1994 5 Ton Tag-A-Long - 6.5x14 \$1,495
1978 3 Axle 11 Ton Tag-A-Long - 8x18..... \$1,900
2 Axle 12 Ton Tag-A-Long - 8x17..... \$1,900
(2) 1994 5 Ton Tag-A-Long - 6.5x16... \$2,095
(2) 1994 5 Ton Tag-A-Long - 6.5x18... \$2,195
(3) 1994 5 Ton Tag-A-Long - 8x18..... \$3,350
1979 Warren 12 Ton Tag-A-Long..... \$3,500
1992 10 Ton Tag-A-Long - 8x24..... \$6,450
1973 General 20 Ton Air Brakes..... \$6,900
1973 Transport 35 Ton Detachable - 8x25..... \$9,900

RUBBER TIRE LOADERS

Hough 90 Diesel - 1959 - 2.5 Yd..... \$3,500
Fiat 345B - Cab - Forks - 1977..... \$9,500
JD 544A - Cab - 2 Yd. - 1971..... \$16,500

BACKHOES

Hoe Attachments..... From \$2,000
Ford 841 Diesel - As Is..... \$3,900
Ford 1801 - Gas..... \$5,900
JD 300 Diesel - 1968..... \$7,900
JD 300B - Diesel - 1974..... \$7,900
Case 580B - Cab - 1974..... \$9,800
JD 310A - Cab - 1979..... \$11,750
JD 310B - Cab - 1984..... \$14,750
JD 310C - Cab - 1986..... \$19,500
(2) JD 510B - Cab - Ext - 1984..... \$22,500
Case 680K - Cab - 1987 - 4 In 1..... \$24,500
JD 710B - Cab - 1984..... \$26,500
JD 710B - Cab - 1985..... \$26,500
Case 580K - 4x4 - Cab - 1988..... \$26,500
JD 410C - 4x4 - Cab - 1987 - Ext..... \$29,500
JD 510B - 4x4 - Cab - 1985 - Ext..... \$29,500
JD 410B - 4x4 - Cab - 1985..... Coming In
JD 510B - Cab - 1984..... Coming In

SKID LOADERS

NH L35 - Diesel - 1972..... \$5,900
NH 555 - Diesel - 1984..... \$9,500

DOZERS

IH TD5 - Winch - No Blade..... \$2,700
MF 200 - 6 Way..... \$8,900
IH TD8E - 6 Way - 1979..... \$19,500

TRACTORS WITH LOADERS

JD 300 Gas - 3 Pt. - PTO..... \$4,900
Ford 600 - Gas - 3 Pt. - PTO..... \$4,900

FORKLIFTS

IH 340 - Gas - Air Tires..... \$ 6,900

LOG SKIDDERS

Clark 666B - Diesel - 1977..... \$7,900
JD 440C - Diesel - 1980..... \$18,500