

**4 BUILDINGS AND SUPPLIES**

**DON'T IGNORE IT - RESTORE IT!**  
 Masonry/Restoration specializing in restoring old stone/brick houses and barns.  
 Also Laying Eldorado Stone  
**J&J Restoration**  
 717-442-4773

**John Koser's**

FOR YOUR HOME IMPROVEMENT NEEDS

LOCATED NORTH OF ELIZABETHTOWN  
 OPEN MON.-FRI. 8 TO 6; SAT. 8 TO 3

- Kitchen Cabinets
- Plywood & Waferboard
- Asphalt Roofing Shingles
- T-1-11 Siding
- GP Insulation
- Railroad Ties
- Shutters
- Replacement Windows
- GP Vinyl Siding

**Merry Christmas & Happy New Year**

**717-367-0283**

**BARNs • ARENAS • SHEDS • GARAGES WAREHOUSES FACTORIES**



**"Steel Top" Buildings**

manufactured & erected by  
**H.B. SMITH CONSTRUCTION CO.**  
 223 Warner Road, Columbus, NJ 08022

(Lease Financing Available)

Structural Steel Packages Available - Any Pitch, Any Truss Design

**609-267-5571 or FAX 609-267-8135**

\* A Division of H.B. SMITH MACHINE CO., INC.

PRIDE IN WORKMANSHIP - PRODUCT GUARANTEE - COURTEOUS SERVICE

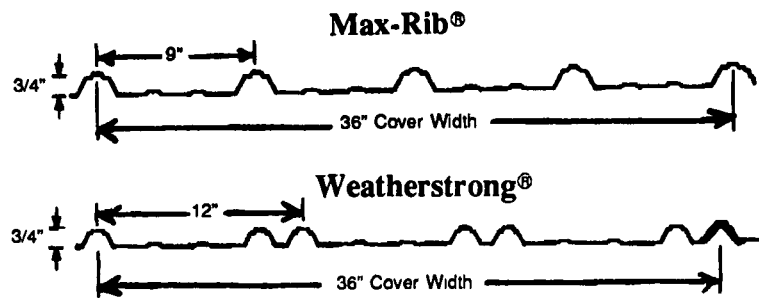


**717-776-5951**

Build With The Best



**McELROY METAL, INC.**  
 TRUSTED BY PROFESSIONALS THROUGHOUT AMERICA



**M & G GENERAL & CONSTRUCTION Pole Buildings**

- Dairy Facilities • Implement Sheds
- Horse Barns • Garages
- General Repairs & Remodeling
- Concrete • Roofing • Siding

Phone:

**Nolan Garman - (717) 270-1841**

**Glenn Martin - (717) 866-4695**

**POLE BUILDINGS, TRUSSES**

**GARAGES - COMMERCIAL BUILDINGS - HORSE BARNs - STORAGE BUILDINGS**

For FREE ESTIMATES Call

**MUSSER & ASSOCIATES, INC.**



SALES

**1-800-331-1875**

**717-354-7561**

245 Fetterville Rd.  
 East Earl, PA  
 17519

**NEW SHIPMENT Desert Storm Surplus EPOXY & POLYURETHANE PAINT**

\$14/gal. White Epoxy - 2 part

Brown } Single part  
 \$12/gal. Green } Polyurethane  
 Black }

This paint is made by Pratt & Lambert and is of the highest quality available. Quantities are limited - buy now while it's available. 10 gallon minimum.

**717-394-4980**

9:30 AM - 5 PM

**STEEL BUILDINGS**

**INVENTORY CLEARANCE**

**SUPER HEAVY STEEL-22 GAUGE**  
 (We Do Not Use Cheap-29 Gauge Tin)

MADE IN THE U.S.A.



No Wood - All Steel

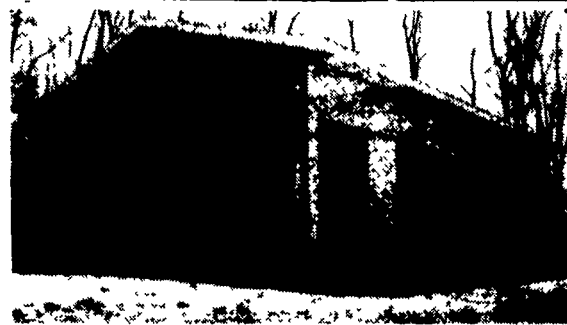
**20 YEAR WARRANTY**

25x30	40x100	Some
30x40	50x200	other sizes
40x62	60x140	available

Our Prices Will NOT be Beaten

**FACTORY DIRECT**

**American Steel Arch, Inc**  
 1-800-942-1234



**POLE BUILDINGS**

CUSTOM DESIGNED & ENGINEERED

- COMMERCIAL  AGRICULTURAL  RESIDENTIAL
- HORSE BARNs • ARENAS • GARAGES
- IMPLEMENT SHEDS

**BYLER CONSTRUCTION**  
 Dennis E. Byler

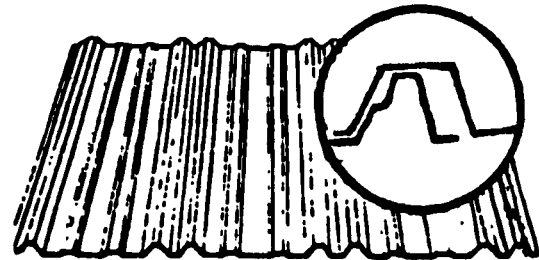
FREE ESTIMATES  
**717-866-6302**

**GLENWOOD METAL FORMING**  
 809 Glenwood Dr., Ephrata, PA 17522  
 FAX

**717-733-9590 - 1-800-582-9956 - 717-738-4988**

**MANUFACTURERS OF METAL ROOFING AND SIDING PANELS**

WITH CUT TO LENGTH LINE IN 36" WIDTH



29 Ga. Galvanized  
 26 Ga. Galvalume  
 .024 Mill Finish Alum.

29 Ga. Painted  
 26 Ga. White  
 29 Ga. 304 Stainless Steel

**24 Ga. Standing Seam Roofing**

In Galvanized - Galvalume & Painted Commercial & Residential Panels

5 & 6" K-Style Alum. Seamless Gutters

- Pre-Hung Thermo Doors
- Agri Built Windows
- Ridgeolators
- Roofing Nails & Screws
- Sliding Door Track Trolley & Hardware
- Ridge Vents