

**MF 880
6X Plow
717/336-6947**

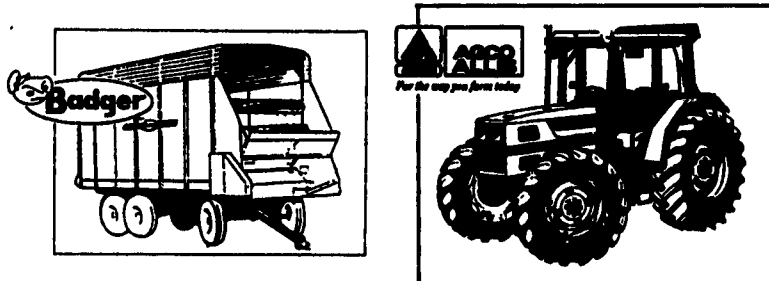
**Harvester Knives
1-800-WEAVER D**

**1 FARM
EQUIPMENT**

**DON'T LOOK
ANY FURTHER!
YOU'LL FIND IT IN
LANCASTER FARMING'S
CLASSIFIEDS**

**SMITH FARM
EQUIPMENT**
30 Acker Rd.
Newport, Pa.
Perry County
717-567-3562

Farmall 504G
IH 686 ROPS
IH 756 D WFE 3 pt.
IH 886 D cab
IH 966 Fender
885 D, cab & air
856 Gas WFE
Ford 9N
JD 4230 w/cab & air
Oliver 1755 D WFE cab
IH 37 Baler
IH 430 Baler & Thrower
NH 851 Round Baler
NH 770 Harvester
Gleaner M2 Combine
5100 Drill w/Press
Wheels
IH 510 Drill
NH 304 Spreader,
Like New
Woods 208 Mower
JD 316 w/Mower
Goosen 3 Pt. Bale
Chopper
IH #50 Shredder



"PRE-SEASON REPAIR DISCOUNTS"
Schedule Your Repairs In Our Shop Before
Feb. 15, 1994 and receive a 10% Discount on
AGCO, BADGER & NEW HOLLAND PARTS.
10% OFF Labor on Repairs Done On Other
Makes Of Tractors or Farm Equipment
Repairs Must Total At Least \$500 And Are
Payable Upon Completion.

Free Trucking Within a 25 Mile Radius

We Will Be Closed Friday, Dec. 24th To Give
Our Employees An Extra Day Of
Christmas Vacation.

For Emergency Parts or Service on Dec. 24th,
Before 2:30 PM For Parts Call 838-4068 and
For Service Call 867-2493 or 933-8714

We Will Close Dec. 31 at 4 PM
Closed Saturday, Jan. 1

"Seasons Greetings from Everyone at BHM"

BHM FARM & LAWN EQUIP.
SALES - PARTS - SERVICE
Route 934 - 3 Miles North of Ansville, PA
Telephone 717-867-2211

**LAWN
&
GARDEN**

Happy Holidays

**NEW &
USED
TRACTOR &
COMBINE
PARTS**

Large Selection
Save 50%
WE BUY & SELL
FARM TOYS,
TRUCK BANKS &
AIRPLANES

ARTICLE 13000
PART
DEVELOPED

WANTED
USED OR ABUSED
TRACTORS &
CONSTRUCTION
EQUIPMENT

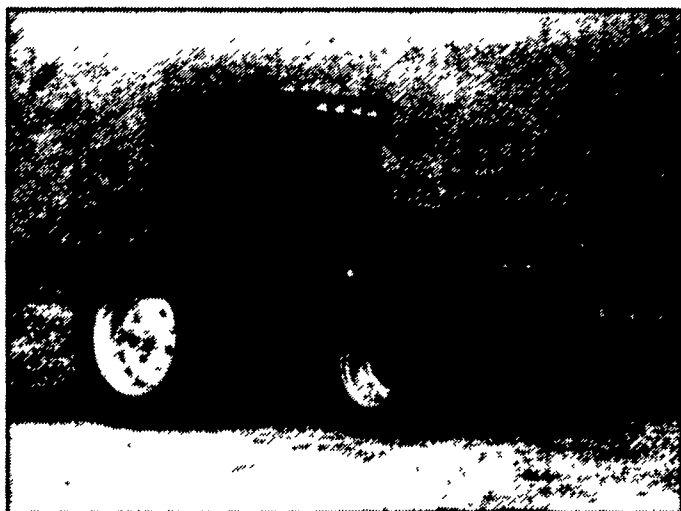
USED TRACTORS

JD Model R ground
driven manure
spreader \$750
IH Model 200 ground
driven manure
spreader \$500
NI Model 12A ground
driven manure
spreader \$500
JD 146 Loader, excel.
cond. off JD 2440
\$2800
Case 1835 gas skid steer
loader \$5,500
IH model 595 tandem
axle spreader \$1,500
as is
AC model 2300 16" disc,
like new \$2,500
JD model F1450 5B,
18" semi-mount plow
\$1,000
JD model 210, 16' disc
\$750
JD LA tractor w/
cultivator & plow
\$1,200 as is.
Case 580 Super E, 4
post, TLB, nice,
\$18,500
JD #30 2R level bed
potato digger \$1000
(2) MF 35, take your
pick, \$2000/ea.
Melroe Bobcat
\$2000 as is
IH 454 diesel
w/loader \$7,000
JD 2630 diesel,
2350 hrs.
JD 213 Flexhead,
\$2,350

**W. C. Littleton
& Son Inc.**
Laurel, DE 19956
1-800-842-7445

The employees of
W. C. Littleton & Son
Inc. are:
A. Albert, Chairman
S. Huff, Vice President
D. Littleton, Secretary
D. Littleton, Treasurer

For The Way You Farm Today
Fingertip Powershift Control, Improved Field
Visibility and The Most Comfortable Cab Ever



**AGCO
ALLIS**
For the way you farm today

**Model 9650
147 PTO HP (109.7 kW)**

With their new 18x9 speed full powershift transmissions that electronically control the engagement of massive gears with just the tap of a hand... their cab-forward design that permits a clear, unobstructed view of the field in all directions... and their roomy, comfortable cabs, that feature a unique swivel, air-ride seat and an exclusive seat-mounted control console, the new 9600 Series tractors are clearly ahead of the time.

Every component — from the sleek, sloping hood, to the rugged, cast-iron mainframe to the world-proven air-cooled diesel engines, that require less maintenance — has been designed to match the way you farm today. The result is greater comfort, better performance and improved productivity.

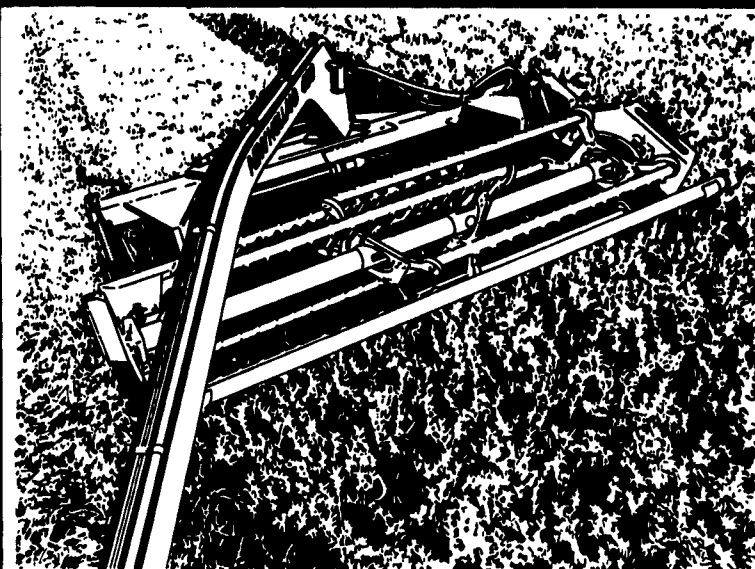
Compare the features and specifications for yourself. Better yet, stop by your AGCO Allis dealer soon and try out one of the 9600 models for yourself. You have to drive it to believe it.

BHM FARM & LAWN EQUIP.

SALES - PARTS - SERVICE
Route 934 - 3 Miles North of Ansville, PA
Telephone 717-867-2211

**Lawn
&
Garden**

499



**CAPACITY AND
CONVENIENCE**

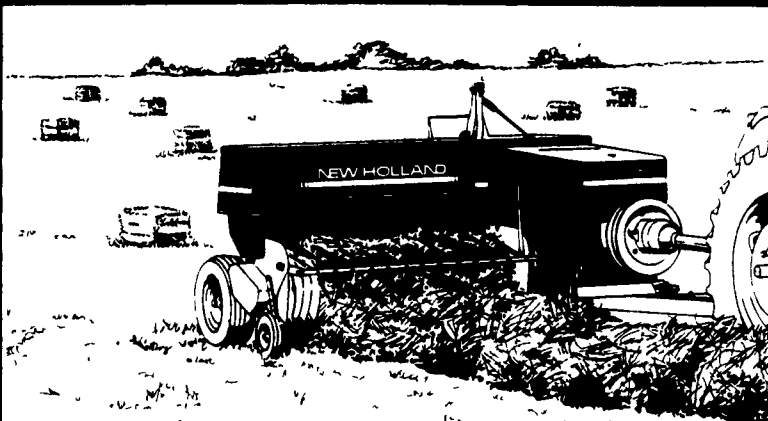
The Model 499 Haybine® mower-conditioner gives you 12-foot capacity with pivot-tongue convenience, plus:

- Patented Rolareel header—no auger needed.
- Fast, clean cutting from dual sickles.
- Thorough, plug-free conditioning from chevron-design rolls.

Put a "499" to work for you.



575



OUT-BALE'M ALL!

The New Holland "575" square baler from Ford New Holland tops every baler in its class... for capacity, bale quality and reliability.

- **Revolutionary rotary feeding system.** Mechanically simple, but unbeatable for hay handling.
- **Exclusive Super-Sweep™** pickup gets all the hay.
- **Heavy-duty materials** in the bale case and plunger.
- **Gear-driven knotters or twisters.**
- **Increased load capabilities** handle extra capacity.

See us for the New Holland "575" square baler.



QUALITY USED EQUIPMENT FOR SALE

- NH-1495 Diesel Engine, Hydro, cab, AC. Haybine
- Hesston 1130 Mower Conditioner
- IH 1086 Tractor
- (4) NH 489 Haybines
- NH 851 Round Baler
- NH 1034 Bale Wagon
- NH 144 Windrow Inverter
- NH 791 Spreader
- NI 3 ~~SOLD~~ Lurry
- NH L553 Skid Loader
- Gehl 96 ~~SOLD~~ Page Box
- Gehl 99 Blower

**LAWN
&
GARDEN**