

SINCE 1936

M.M. WEAVER & SONS, INC.



MASSEY FERGUSON

Tractors And Combines

Leola, PA 17540 Phone: (717) 656-2321

Located: 4 miles West of New Holland on Rt. 23, 1 1/2 miles Northeast of Leola on the No. Groffdale Rd., 1 mile on the right, opposite Groffdale Mennonite Church.

Discover
CLAAS
THE HARVESTING SPECIALIST

CASH SALES DAYS

58th Anniversary Discount Days

• PARTS • NEW EQUIPMENT • GOOD USED EQUIPMENT

January 3rd thru January 28th, 1994

Mon. thru Fri. 7 AM to 5 PM, Sat. 7 AM to 12 Noon

All Items Subject To Availability

USED COMBINES

1982 MF 850 With 15 Ft. Floating Head.....	\$23,000
1982 MF 860 With 15 Ft. Floating Head.....	\$22,000
1981 MF 860 With 15 Ft. Floating Head.....	\$22,000
1980 MF 550 With 13 Ft. Floating Head.....	\$21,000
1979 MF 550 With 13 Ft. Floating Head.....	\$16,000
1978 MF 540 With 13 Ft. Floating Head.....	\$11,500
NI 710 With 713 13 Ft. Grain Head.....	\$800
NI 843 N 3 Row 30" Quick-Tach Corn Head.....	\$1,200

USED TRACTORS

MF 3660-4, 140 HP, 814 Hrs.	\$52,000
MF 3525-2, 110 HP, 2882 Hrs.	\$18,500
MF 374-4 With Loader, 57 HP, 735 Hrs.	\$21,000
MF 390 Tractor, 70 HP, 750 Hrs.	\$18,000
MF 1085, 82 HP, 3980 Hrs.	\$7,500
MF 1080, 82 HP, 5516 Hrs.	\$5,000
MF 1030-2, 26 HP, 232 Hrs.	\$6,700
MF 1035-2, 31 HP, 185 Hrs.	\$7,600
MF 1045-2, 35 HP, 262 Hrs.	\$7,900
MF 30E With Loader, 668 Hrs.	\$19,500
MF 265, 65 HP, Diesel.....	\$9,000
IH 350 Tractor, 42 HP, Rebuilt.....	\$2,900
Ford 9N Tractor.....	\$1,500
Allis CA Tractor.....	SOLD \$1,200
MF 285 82 HP.....	\$5,900

HAY EQUIPMENT

New Idea 483 Round Baler, 1 Yr. Old.....	\$6,900
MF 128 Baler.....	\$2,200
Demo Vicon 1511E 5x6 Round Baler.....	\$9,900
Demo MF 5 Big Square SOLD	\$36,000
Used Vicon 1211 E 4x5 Round Baler.....	\$6,500
Demo Vicon 321 Disc Mower Conditioner.....	\$12,500
Demo Vicon 216 7 Ft. Disc Mower.....	\$3,900
Vicon KM240 Discbine, Parts.....	\$900
Teagle Bale Shredder.....	\$1,900
Vicon RS740 Tedder 24 Ft.....	\$4,500
Vicon KM281 Mower Conditioner.....	\$6,500
Vicon 321 Mower Conditioner.....	\$7,500
New Holland #848 Round Baler.....	\$5,500

PLOWS & TILLAGE

JD 10 Ft. Disc.....	\$800
M&W 5 Tooth V-Ripper.....	\$5,700
Vicon 18 Ft. Field Cultivator.....	\$6,900
MF 2-16 Spring Trip 3 Pt. Plow.....	\$650
Yetter 3 Pt. Rotary Hoe.....	\$2,695
Pequea 6 Row Cultivator.....	\$2,100

MANURE & FEED MIXER EQUIPMENT

SFM Liquid Spreader, 1100 Gal.....	\$3,900
IH 595 Tandem Spreaders.....	\$3,900
NI 364 Tandem Spreader.....	\$4,500

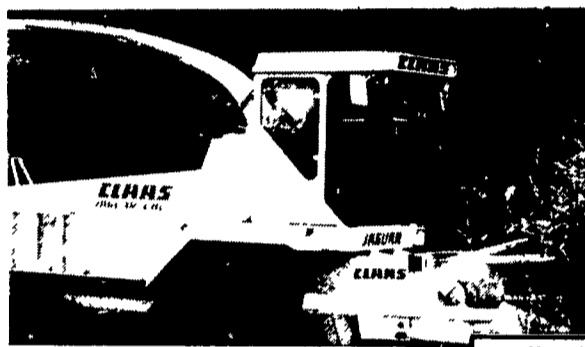
ROTARY CUTTERS & EQUIPMENT

Hinicker Brady 12 Ft. 1000 RPM Shredder.....	\$5,500
Woods 60 HP Rated 8 Ft. 3 Pt. Blade.....	\$650
7 Ft. 3 Pt. Scraper Blade.....	\$305
Brady 7 Ft. Flail Chopper.....	\$2,500
Danuser 3 Pt. Post Hole Digger.....	\$680
Shaver 3 Pt. Hydraulic Post Drive.....	\$2,500

WOODS

20 NEW WOODS ROTARY CUTTERS IN STOCK AT JANUARY DISCOUNT PRICES!

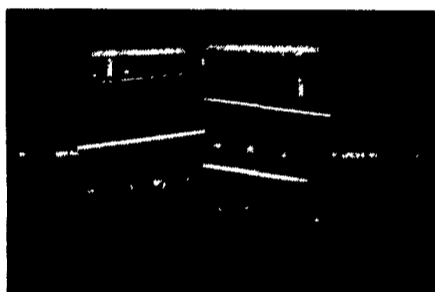
THE CLAAS HARVESTER



MAXIMUM FEED QUALITY

To ensure maximum feed quality from maize it is vital to crack every kernel. Digestion of uncracked maize falls as the maize becomes drier. Independent trials have shown the Claas corn cracker to be close to 100% effective. From the cylinder the corn passes through the two large diameter rollers with saw tooth profiles. The rollers run at different speeds to intensify the grinding effect and open up each kernel. It is a fairly tough process so the latest generation of corn crackers take account of the wear involved on the rollers. Nothing can reduce the wear but Claas have cut the cost of repair by making the outer sleeve replaceable. The shaft, drive pulley and bearings can all be reused which cuts down repair bills dramatically. Adjusting the distance between the two rollers is accomplished by turning two handles, easily accessible behind the cab. In no time at all the degree of cracking can be matched to the ripeness of the crop.

Call Today For The Custom Harvester In Your Area Equipped With A Claas Harvester And Roller Mill



RELIABILITY

The CLAAS Cutterbox is a unique balanced design using 2 knives in a V configuration. This forces the cutting action toward the center instead of the outside. This is the secret of their horsepower requirement and good quality of cut.



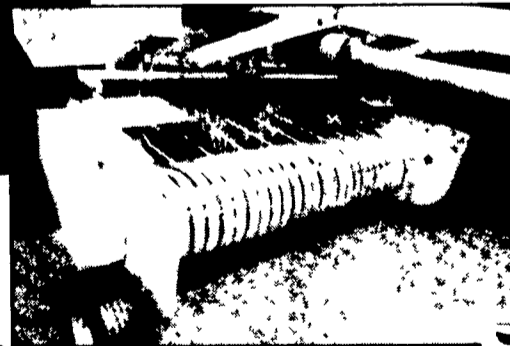
The New ROTOCUT SILAGE BALER

Cuts Your Crop As It Is Forced Through A Series Of Knives.

The Benefits:

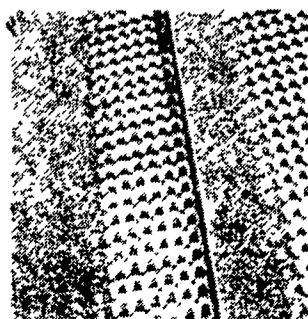
- Even higher bale density
- Easier distribution of bale contents

Hard to feed crops are aggressively fed right into this baler. Now you can cut and bale rye, barley and oats at boot stage. Bales fall apart - you can throw them down a hay hole and feed them with a fork.

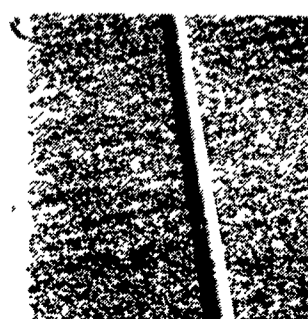


MASSEY FERGUSON

COMBINING SLOPES — THE MF 3-D CLEANING SYSTEM



Normal cleaning across slopes



3-D in operation

With the MF 3-D system you can operate at the same speed on slopes as on flat land. Daily performance can be maintained.

The 3-D cleaning system provides dynamic slope compensation which means that the upper sieve moves sideways against the slope of the hill. The degree and direction of these movements depend on the inclination of the slope. Quick reaction and of course equal performance in any direction on slopes of up to 20%.

With the MF-3-D cleaning system, the crop is distributed evenly across the full width of the sieves, performance remains stable and output maintained.