

SINCE 1936

**M.M. WEAVER & SONS, INC.**



**Leola, PA 17540 Phone: (717) 656-2321**  
 Located: 4 miles West of New Holland on Rt. 23, 1/4 miles Northeast of Leola on the No. Groffdale Rd., 1 mile on the right, opposite Groffdale Mennonite Church.



**CASH SALES DAYS**  
**58th Anniversary Discount Days**  
 • PARTS • NEW EQUIPMENT • GOOD USED EQUIPMENT  
**January 3rd thru January 28th, 1994**  
 Mon. thru Fri. 7 AM to 5 PM, Sat. 7 AM to 12 Noon *All Items Subject To Availability*

**We're Having  
 an Open House!  
 And You're  
 Invited!**



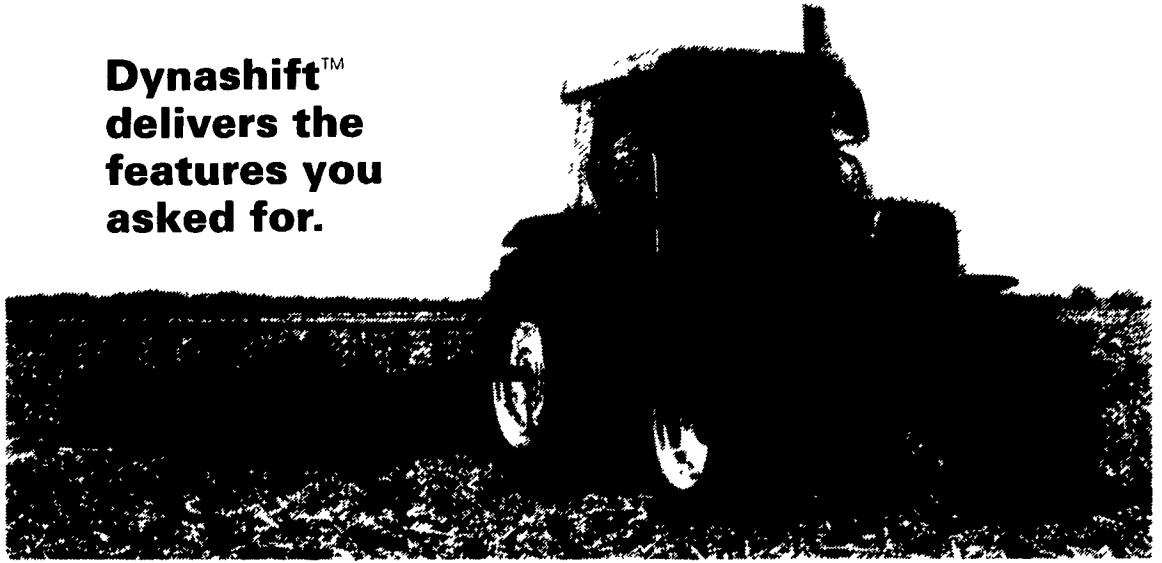
**Thursday, Jan. 20th**

- ▼ Free Food and Drinks
- ▼ Gifts
- ▼ Door Prizes
- ▼ Parts Specials
- ▼ Machinery Specials
- ▼ Farm Toys
- ▼ New Machinery on Display

**10:00 AM - Introducing The New Claas S.P. Harvester**

**2:00 PM - Dieter Kreig Will Show & Tell Of His Boyhood Days In Germany And Recent Visit To East and West Germany**

**Dynashift™  
 delivers the  
 features you  
 asked for.**



**What farmers like you told us  
 you want in a powershift transmission.**

"Smooth shifts"	The transmission has to shift as smoothly as you can manually shift, without the jerks that can damage implements
"Fuel efficiency"	Deliver more engine power to the wheels and PTO
"Reverse shuttle shifting"	Make synchronized shifts from forward to reverse
"Better speed selection"	The next powershift gear should never be more than 17% faster or slower
"Low cost"	Make the benefits of powershifting more affordable to buy and maintain

**HYDRA-SPREAD**  
 HYDRAULIC PUSH-OFF MANURE SPREADER

Single or two beater designs. Aggressive, high-speed beaters - with up to 15 paddles per beater - deliver a fine uniform spread. Replaceable bolted paddles on main beater

Snug-fitting end-gate controls sloppy or granular manure.

Polyethylene sides and bottom containing 90% re-cycled material. Guaranteed for the life of the spreader.

Simple and reliable single-stage push gate for dependable, trouble-free unloading. Centre-guided design eliminates jam-ups

Optional slurry pan prevents spills. Controls sloppy or fine materials for even finer more uniform spreading.

Optional wood rail - increase capacity and protect the box.

Precision metering valve for infinitely variable unloading from 0 - 8 fpm

Fully shielded PTO with overload protection

Simple, dependable power train. Every shaft (even the upper beater) is splined for efficient power transmission and long life.

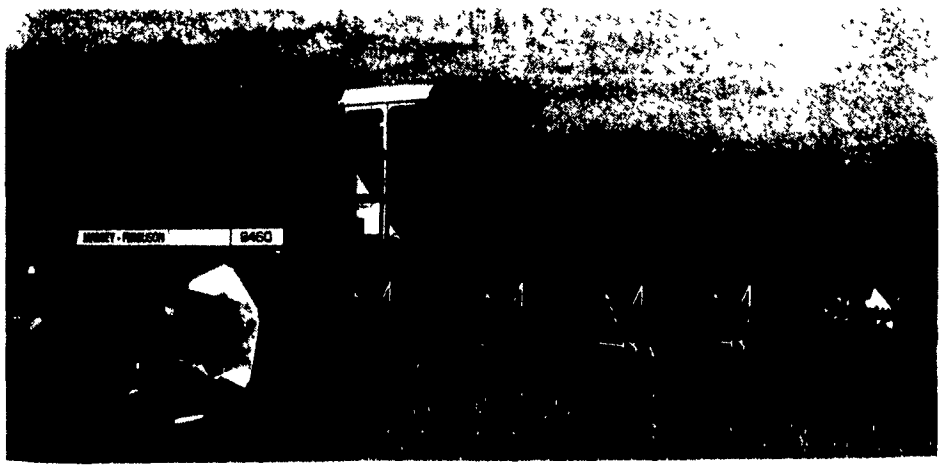
Truck type or flotation tires to suit your needs.

Clean design. No obstructions to hold manure.

Driveline and gearbox are safely contained within the frame - under the floor. Easily serviced and repaired

Strong, all-welded frame with heavy structural tubes. All structural members are high-strength steel.

Hydraulic cylinders are installed above the floor. Always accessible - always easy to clean and service



Bright

NEW  
 FEATURES  
 for 1993

**28 NEW MF 8400 Series Conventional Combines features**

The revolutionary Perkins Quandram engine delivers more power, more torque, better efficiency, less noise and less engine stress. The cab, instrument panel and working lights all feature major improvements. And that's just the start. We're also offering new services, better deals and low-rate MF financing. Stop in today to check out all the reasons why a Massey Ferguson combine is your best choice ever.

