



1989 Ford XLT F250 Super Cab, 460 Auto, PS, PB, PW, PDL, Cruise, Tilt, Air, AM-FM Cass., Trailer Towing Package, Brown & Tan, 26,000 Orig. Miles, 1 Owner, Like New.
\$13,500



1987 Ford XL F250 4x4, 351, Auto, PS, PB, AM-FM, Dual Tanks, 8,600 GVW With 8 Ft. Stake Body, 1 Owner, 42,000 Orig. Miles.
\$8,975

A&J Auto Sales

798 E. Main St. Rt. 322 East, Ephrata, PA 17522
717-733-2873

Good Used Van Trailers For Sale

1984 Great Dane Van, 48' 102" High Cube Van, 22.5 Lo Pro Radials, Good Tires, SS Rear Doors & Vents.....\$5,900
1983 Bud Van, 48' 102", Good Rubber.....\$5,700
1976 Great Dane Van, 45' Drop Frame, 2 Side Doors, 10:00R15 Tires, New Brake Job.....\$4,900

215/767-7709



1988 Mack with new 18 ft. grain bed and 20 ton harsh scissor hoist. 33,000 GVW, air-brakes. Best Offer. (717) 867-5633

(800) 533-3837

YOUR DIRECT LINE TO GENUINE GM PARTS

When you call the number listed above you'll reach our wholesale parts specialists, who can help you keep your GM repair work moving quickly. Ask About:

- Specializing in GM Medium Duty Trucks, Current and Obsolete.
- \$500,000 Parts Inventory
- Parts Locator For Those Hard To Find Items
- We Ship Anywhere. Local Delivery Available.
- Experienced, Knowledgeable Personnel.

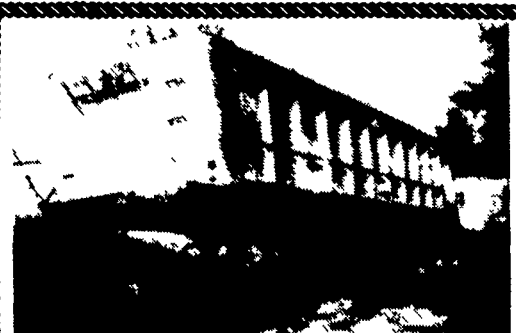


(717) 432-9697

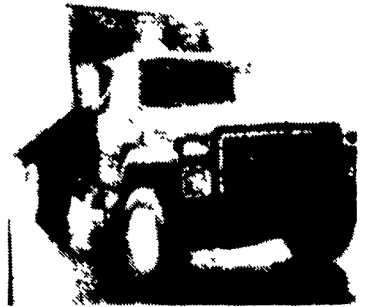
Quality Dealer Since 1921
406 U.S. Route 15 • Dillsburg, PA 17019



Mr. Goodwrench



1984 East Tri-Axle, 32' Alum. Bed, 33'6" Alum. Frame, Grain Gate, Outboard Drums, Excellent Low Profile 24.5 Rubber On Alcoa Alum. Buds, Nice, Low Mileage Trailer
\$17,000
Call Eves. (304) 876-6653



1989 I-H-DT466A 7SPD Air Brakes, 16 Ft. Flat Bed Dump, 64,000 Miles, Like New \$23,600. Also 1989 I-H Same Specs-10 Ft. Steel Dump \$22,900.

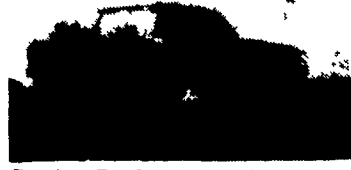


FIVE-STAR GMC TRUCK INC.
New/Used Truck Sales and Service
Parts & Accessories
Dunham Drive ★ Dunmore, PA 18512
(717) 346-1701
FAX ★ (717) 346 3870

NEW DIESELS!



Coming In Quigley 4x4 Conversion 1994 F-450 Super Duty Chassis Cab, XL, 7.3L Diesel, 5 Spd. Manual w/OD, 5.13 Regular Rear Axle, Dark Blue w/Royal Blue Interior Stock #5945.



Coming In Quigley 4x4 Conversion 1994 F-350 Crew Cab 7.3L Turbo Diesel, Elec. 4 Spd. Auto, 4.10 Limited Slip Rear Axle, Camper Package, A/C, Speed Control, Tilt Steering Wheel, Power Door Locks/Windows, Red w/Gray Interior Stock #7819.



1993 F-350 4x2 Utility Truck, 5.8L EFI, V8, Elec. 4 Spd., Auto, 3.55 Regular Axle, 133 Inch Wheelbase, Super Engine Cooling, HD Battery, Bright Red w/Dk. Charcoal Interior. Stock #3275.



1994 F-350 SC 4x2, 7.3L Turbo Diesel, Elec. 4 Spd., Auto, XLT, 4.10 Limited Slip Rear Axle, Camper Package, Speed Control, Tilt Steering Wheel, Power Doors, Power Locks, Tucson Bronze w/Mocha Interior Stock #4520.



1994 F-450 SD Chassis Cab, 4x2, XL, 7.3L Diesel V8, 5 Spd., w/OD, 5.13 Rear Axle, 137 Inch WB, Red w/Grey, Vinyl Interior Stock #7838



1994 F-350 Chassis Cab, 7.3L Turbo Diesel, 5 Spd., Manual O/D, 137 Inch WB, 4.10 Limited Slip Rear Axle, Manual Locking Hubs, Dk Blue With Blue Interior. Stock #0905.

OUR LOWEST

"NO HASSLE PRICE"

IS MARKED ON EVERY VEHICLE... EVERY DAY... PERIOD

TRY US!

717-949-2000



KELLER BROS.

RD 7, Box 405
Lebanon, PA
17042

**HESS FORD
Exclusive Centurion
Dealer
For The Harrisburg Area
Fords Answer To Suburban**



**CENTURION
VEHICLES, INC.**



F-150 — F-350 In Stock

Full Power, Air, Tilt, Cruise, 4x4's, Stereo, Cassette,

For More Information Stop In Or Call...

J.C. HESS FORD, INC.

1250 Cocoa Ave., Rt. 743, Hershey, PA
• 5 Miles North of the Elizabethtown Exit off Rt. 283
• 2 Blocks South of 322 in Hershey
717-533-9115