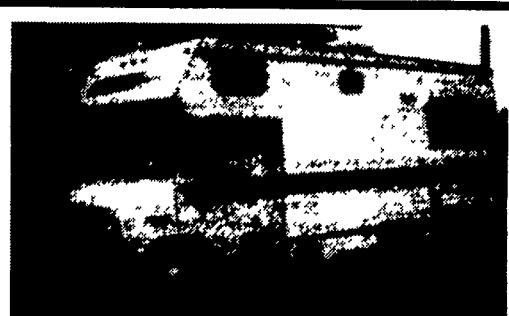


33 RECREATIONAL VEHICLES

1993 Polaris 350 Liquid Cold 4-Wheeler, new condition, \$3500. 717/653-5359.

Apache popup trailer, hard sides, no canvas, very good condition, \$1,200 OBO. After 6pm, (908)689-9054.



1988 Elite Motor Home
23 Ft. Chev Chassis, 350 Fuel Injected, Roof Air, Auto Air, Speed Control, Side Bath, Good Condition
\$12,800
Curry Supply
Curryville, PA
1-800-345-2829

35 TRUCKS & TRAILERS

1960 Ford C950 24' Henderson Roll Back, Needs Work. \$3000-BO. (215)968-4808.

1967 Ford F700 grain dump, runs good, \$1500. 717/665-4616 after 5pm.

1987 GMC Cube Van, 14 ft, good condition, auto, A/C, AM/FM, \$7000 OBO. (609)451-1187.

1978 International S-2500 series, tri-axle dump truck, 19' aluminum dump body, Cummins 290, trans. RTO9513, 73,280 GVW, \$10,500. Ask for Charlie or Joe, (717)755-2911.

1974 Ford F-700, 26,000 GVW, 14' dump w/feed blower. (215)589-4308.

1973 Ford dump truck, gas, 32,000 GVW, 16' grain body, good, \$4,000. (302)731-9510.

1974 F Model Mack, Chassis. For Parts, 290 Cummins Engine, Tandem Axle. Asking \$1500. (717)273-6309 Evenings.

1974 Ford L800 391ci, 9000K on motor, 5-2rears, 3300 GVW. 717-337-1742 after 6PM.

MOTOR HOME FOR SALE
1987 28' Class A Komfort Coach made in Calif. 25,700 orig. miles - Chev. chassis w/454 engine - most options available are on this quality coach incl. air ride & all new tires and it is ready to go. Price \$29,900.00. Incl. is a Kar Kaddy w/adjustable axle.
Call 215-562-4286
Leave a message if necessary

34 AUTOS

Pontiac Starchief 2 Dr. Hardtop
1955 Turquoise and White, Leather Interior, S.S. Trim, Fully Original In and Out. Engine & Running Gear In Exc. Cond. New Paint in 85. Inspected and Licensed, Ready To Put Under Tree, Will Deliver
\$5300 OBO
(717) 266-4490

1979 Dodge D400, good condition, \$1500. 609/965-7468.

1969 single axle dump, White, 230 Cummins engine. \$3500. 301-596-9700; 1-800-750-5780.

1973 Chev.65, 33,000 GVW, 366V-8, 5-speed w/2 speed rear, 20' aluminum van, roll up door, side door, insulated, \$2800. 814/495-9270.

1983 R Model Mack, Tandem Axle, 300 5Spd., Nice Clean Truck. 35' Aluminum Steeel Dump Trailer, Nice Shape. (215)944-9871.

1984 Ford F150 4x4, 4 speed, 6 cylinder, AC, cruise, bedliner, 94K, nice truck, \$4500 OBO. 717-367-3621.

1985 GMC C3500 pickup, 6.2 diesel, 12' box, van door, dual wheels, 100,000 miles, \$4400 OBO. 908-689-7366 days; 908-689-4475 nights.

1979 Ford 800, 429 gas, 32,000 GVW, 5+2, PS, air brakes 410-877-9889.

1979 R Model Tandem Axle Mack Tractor, 300 Engine, 60 Transmission, 11R24 5 Rubber w/ Wetline. \$7500. (215)383-7042.

1982 MS200 Mack midliner, tag axle, 27' stake body, low miles, 33,000 GVW 215-682-4160.

Chev.73C60, only 21K mi., low side dump, 2-speed rear. \$3000. 301/948-9661.

Chevy 1989 1-ton, 454 auto, PS, PB, air, AM/FM cass., sliding rear window, trailer and gooseneck package, \$5000. 609/358-1281.

Chevy C30, 1985, w/11' steel flatbed, 454, AT, PS, PB, AC, good condition, \$5900, '87 Ford F350 w/12' flatbed, 460, AT, PS, PB, AC, good condition, \$10,500 717-345-4882.

DIESEL TRUCK OWNERS! Reduce your smoke 30% within six minutes. Install an "IRA Box". Satisfaction guaranteed. 800/554-4824.

Diesel Engines: Detroit, 318, 16V71, 12V71, 671, V-653, 6V92, 8.2; Chev diesel 6.2. Other engines and truck parts. Reasonable prices. Call after 6PM, (215)944-9871.

F600 Ford '73 4Spd., 2Spd. Rear, Dump, 23000 GVW w/Plow. (717)757-1960.

Fuel oil delivery truck, 4 compartment tank on 1952 Int. L-160, 4+2 speed, 17,000 GVW, excellent condition, \$1650 OBO. 215/584-0494.

Heavy Duty (3500 Series) GMC Cargo Van (Vandura) 6.2 Diesel, Good Condition \$3,150. (717) 656-8459 (717)656-2864 Fax.

'89 Ford F-250 XLT Lariat, 4WD, 7.3 diesel, automatic, dual tanks, air, P/S, P/B, P/W, P/L, AmFm cassette, cruise, tilt, running boards, matching Leer cap, visor, clearance lights on cab, bedliner, CB, class III hitch, 70,000 miles, dark blue and gray, sharp and clean. Asking \$13,500. (717)754-3009.

'89 Ford XLT Bronco, 302 EFI, auto, all options, 1 owner, black & silver, like new, \$10,900. 717-733-2873

'90 Dodge LE D150, 4x4, club cab, 318 EFI, auto, PB, PS, AM-FM, 26,000 miles, charcoal & silver, excellent condition, \$12,900. 717-733-2873

'90 F250, 8600 GVW, well-maintained, super clean, automatic, overdrive, A/C, 88,000 miles, \$8900. 717/649-6436.

'90 Ford XL F150, 300 EFI, 5 spd., PS, PB, AM-FM cassette, dual tanks, new radials, 45,000 miles, black, excellent condition, \$8,300 717-733-2873

'91 Ford F-150 custom pickup, 6 cylinder, 5 speed, P/S, P/B, dual tanks, 49,000 mi, 1 owner, very clean, black w/gray interior, \$8,700 Will take trade. (717)733-0850.

'91 Ford F150, Super Cab, 302 EFI, 5 spd, PS, PB, AM-FM, Dual Tanks w/ Fiberglass Cap, 6,250 GVW, 22,000 One Owner Miles, w/Balance Of Factory Warranty, Like New, \$12,500 717-733-2873

'93 6x14 gooseneck stock trailer, brush fenders, new condition, \$4500. 717/649-6436.

'93 S-10 Tahoe 4X4, 12,000 Miles, 4.3, Blue and Silver, Aluminum Wheels, Aluminum Cap. \$15,300 (717)665-6775 Evenings.

Hopper Trailer, 1975 Timpte new tarp, landing gear, excellent tires, \$5000. 410/398-5123.

Large contractors toolbox cap, \$1300; 6 1/2' Chevy box \$800. Both never used. 717-788-4078.

Tank trailer Heil, aluminum, 8700 gallon, bottom load, vapor recovery, Souley system, good condition, \$3,500 (215)343-0156.

WANTED: 18' van truck box w/roll-up door, must be in good shape. 717/374-0284, 717/374-9996.

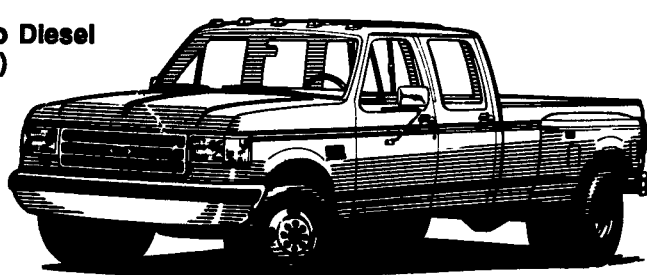
Peace
E-TOWN DODGE
1994 15 Passenger Maxie-Wagon
(4) 1994 Dodge Truck Full Size 4x4 Pickup, Diesel & Gas, In Stock
Motor Homes, One Class A
CALL MILTON HESS
Certified Truck Specialist
717-367-6644
717-653-6667
Ellizabethtown, PA

Mark VII - Pickups - Broncos - Bronco II - Stake Body - Crew Cab

In Stock

- (2) F250's
- (2) '93 Turbo Diesel (In stock)

'94 FORD CREW CABS



'93 FORD F350 XLT
Crew Cab, 7.3 Diesel, AT, Loaded, 23,000 MI. #4032A
\$22,499



'91 FORD F150 XLT
4x4, V8, 5 Spd., Roll Bar, Black #P1684A
\$16,995



'92 FORD F150 XLT
6 Cyl., 5-Speed, 12,000 Miles, #P1732H
\$14,999



'93 FORD AEROSTAR XLT
AT, Dual A/C, Roof Rack #P1730
\$19,997



'93 FORD RANGER SPLASH
4.0 V6, A/C, Loaded, Only 4,000 MI. #4135A**\$13,999**



'93 FORD AEROSTAR XLT
Extended, All Wheel Drive, 21,000 Miles, Like New #P1734 ...Like New **\$21,400**



'90 FORD CLUB WAGON
XLT V8, AT #1472A**Special Price \$10,997**



'89 FORD F150 XLT Super Cab w/Matching Cap, 5.0 V8, AT, Low Miles #1996B**\$12,899**



'91 FORD EXPLORER XLT 4 Dr., AT, Cassette, Very Clean #P1736**Special \$17,600**



'92 FORD F150 XLT 302 V8, 4 Spd., 1-Owner #1609A**\$14,989**



'91 FORD AEROSTAR 6 Cyl., AT, AC, Low Miles #1828A**\$15,897**



'88 FORD F150 4x4 6 Cyl., 4 Spd., A/C, Red #1636A**\$10,999**



'90 DODGE CARAVAN SE, AT, AC, White, 36,000 Miles, #1974B**\$12,997**



'86 PLYMOUTH VOYAGER LE, AT, AC, #1924A...**\$6,999**



1989 FORD RANGER 4x4, 4 Cyl., 5 Spd., Cassette, #2007B**\$10,195**



'90 PLYMOUTH VOYAGER, 6 Cyl., AT, Cassette #2039A **\$13,387**

Unless This Emblem Is On Your Car Or Truck You Probably Paid Too Much

9-9 Daily
9-5 Sat.
717-272-7671



SHEEHY LEBANON
SHEEHY FORD LINCOLN MERCURY INC.
20th & Cumberland St., Lebanon

Parts Dept. Open
Daily 8-5
Sat. 8-12
717-273-8168

Custom Vans - XLT - Grand Marguis - Marquis

Lynx - Topaz - Diesel Pickups - Mustang - T Bird