

(Continued from Page A25)

herd for milk. Hiddenview cattle ran the highest average for protein production for 1993, with 783 pounds.

The county's herd recording the highest average butterfat production is owned by Junge Farms Inc. The average was 870 pounds butterfat.

Harod Schuler and son's herd ran the lowest average somatic cell count, with an average 140,000 SCC. Schuler also earned second place award for herd management.

The second lowest SCC herd was Lowell Kurtz's, with an 152,000 SCC.

The Berks County Brown Swiss wit the highest production was Gilda, owned by Northkill Creek Farm. Gilda produced 27,416 pounds of milk, 903 pounds of protein, and 1,108 pounds of butterfat.

The high producing Guernseys were both owned by Carl Hollenbach. His Sally made 16,601

pounds of milk and 538 pounds of protein, while his cow, Sere, made 735 pounds of fat.

The top producing Holstein for milk and protein was No.87, owned by Glenn Gockley, which produced 40,335 pounds of milk, and 1,228 pounds of protein.

The highest producing Holstein for butterfat content was Fudge, owned by Plushanski Farm Inc. Fudge made 1,447 pounds of fat.

In the Jersey breed, the high producing animal for milk and protein was No. 486, owned by Robert Dreisbach. She made 22,576 pounds of milk and 787 pounds of protein.

Dreisbach also owned by the top fat-producing Jersey, No. 474, that made 474 pounds.

In the Milking Shorthorn breed, Sam Yoder's Heather made the most milk and protein — 17,638 pounds milk, 594 pounds protein — while his cow, Pat, made the most fat, at 685 pounds.

In the Ayrshire breed, William Claxton's Serinty made 19,414 pounds of milk and 652 pounds of protein to lead the breed in those categories.

Mina, an Ayrshire owned by Heindel Farms Inc., made the more fat with 770 pounds.

The high lifetime production

recognition for milk and fat went to Gale owned by FGG Holstein. She made 256,590 pounds of milk and 10,234 pounds of butterfat.

The high lifetime production for protein was made by Kend, owned by Mertz Brothers. She made 7,833 pounds.



4473/4530

Plant them for the Performance

Buy them for the savings

If you're looking for big performance from a medium maturity hybrid, it's tough to beat Funk's G[®] brand 4473 or 4530. And now there's a way to get that performance at substantial savings.

You'll save \$330 when you buy 24 units of each in our 48-unit Performance Pak[®]. Or save \$50 when you buy six units of each in our 12-unit Trial Pak[®]. Either way, you'll get two of our best hybrids for yield, standability, drydown and all-around performance.

Find out how you can get big hybrid performance at big savings. Ask your local Hoffman sales representative today. Or call: **1-800-776-7929**

4473

Relative Maturity: 112 days

- ◆ Produced 196 Bu/A in Lancaster County, Pa. and 207 Bu/A in Seaford County, Del. in 1992
- ◆ Excellent dual purpose hybrid with high TDN/A
- ◆ Tassels late for its harvest moisture.
- ◆ Outstanding early vigor and growth.

4530

Relative Maturity: 113 days

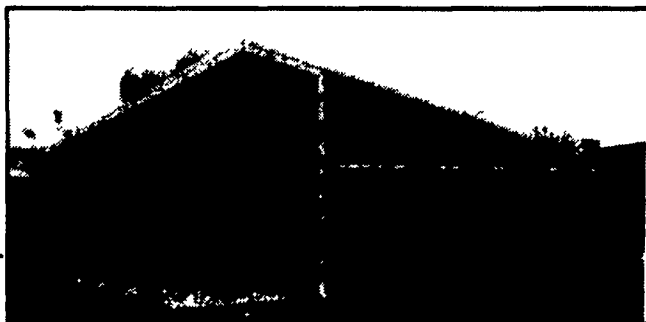
- ◆ Averaged 151 Bu/A at 18.2% moisture in Md. state trials.
- ◆ Big yields under eastern disease pressures.
- ◆ Excellent standability and intactness.
- ◆ Attractive field appearance with medium plant height.



Seeds

Ciba Seeds

Hoffman Seeds, Inc.
Landisville, PA 17538
Call toll free: 1-800-776-7929
Adding Value To Your Seed Investment



26'x100'
VIRGINIA STYLE
HEIFER BARN
Winter Sale Now In Effect
CALL FOR DETAILS

Shelter For Your Livestock Investment

When livestock is your livelihood, you want the safety and security of a Lester wood frame building.

Choose from our wide range of Uni-Frame[®] livestock facilities in standard and custom designs. Each constructed from only top quality materials.

Engineered to withstand extreme weather. Supported by the nation's leading building company. And backed by the industry's leading warranty. Visit your local Lester dealer or call 1-800-826-4439 today. From chickens to cows to hogs, Lester has it covered.

VALLEY VIEW CONSTRUCTION, INC.

2622 Valley View Road MORGANTOWN, PA 19543
CALL (215) 286-5407 OR (215) 445-8317

© 1992 Butler Manufacturing Company

THE BRAND THAT MAKES THE DIFFERENCE.



LESTER BUILDING SYSTEMS
A Division of Butler Manufacturing Company

FISHER & THOMPSON ANNOUNCES THE OPEN HOUSE WINNERS!!!

GRAND PRIZE WINNER - His Selection Was:

6 Visatron Units

ARLEN LANDIS - Christiana, PA

SECOND PRIZE - Registered Holstein Calf

. 183 Lbs • 72 Days Old

ERVIN BRUBAKER - Lebanon, PA

THIRD PRIZE - Homelite Weed Eater

EPHRAM STOLTZFUS - Honeybrook, PA

Open House

Fisher & Thompson Inc.

DIARY & MILKING EQUIPMENT SALES & SERVICE

24 Hour Service • We Ship Parts Daily UPS • On The Farm Route Service

15 Newport Road, Leola, PA 17540 717-656-3307

AMOS FISHER - Res: 717-354-2537
RICK THOMPSON - Res: 717-627-1162
MERLE RESSLER - Res: 717-354-8758