

Stream Bank Fencing Available Free

(Continued from Page A23)

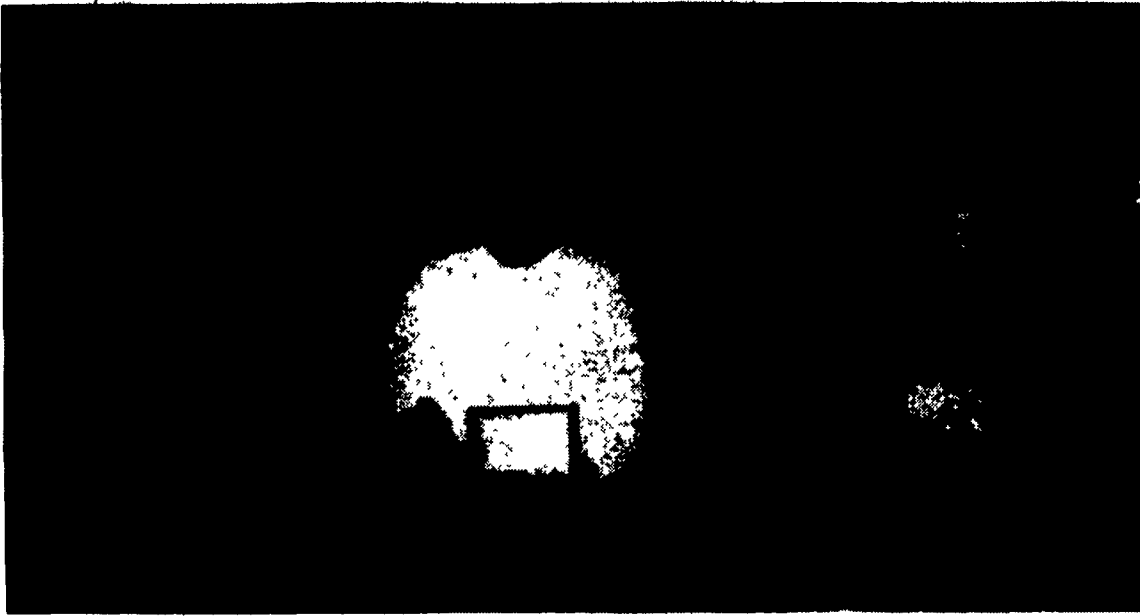
DER will hire the contractors and supervise the installation of the fencing, according to Robinson. According to a release, during the installation, high quality single- or double-strang spider-type electric material is used. Two wires are installed in cow-calf operations. Low impedance, high voltage solar-generated energizers provide the electrification needed. Included is an electric warning sign for each 500 feet of fence.

The landowner is responsible for maintenance of the fence and

fence charger for 10 years from the date of installation, according to DER.

In the past, the Pennsylvania Game Commission paid for free stream bank fencing as long as the land owner allowed hunters during season. But the new DER program doesn't have those provisions.

For more information, contact Robinson at the Lancaster Conservation District, Room 6, Farm and Home Center, 1383 Arcadia Rd., Lancaster, PA 17601, (717) 299-5361, or your local conservation district office.



From the left, recipients of Berks County DHIA production awards are Tim and Teresa Kissling, F. Mark and Kim Weber, and Harold Schuler.

Berks DHIA Holds Banquet

LEESPORT (Berks Co.) — The Berks County Dairy Herd Improvement Association last week held its annual banquet at the Berks County 4-H Center in Leesport.

Several members were recognized for owning herds and individual cows with outstanding production records.

The high herd in milk produc-

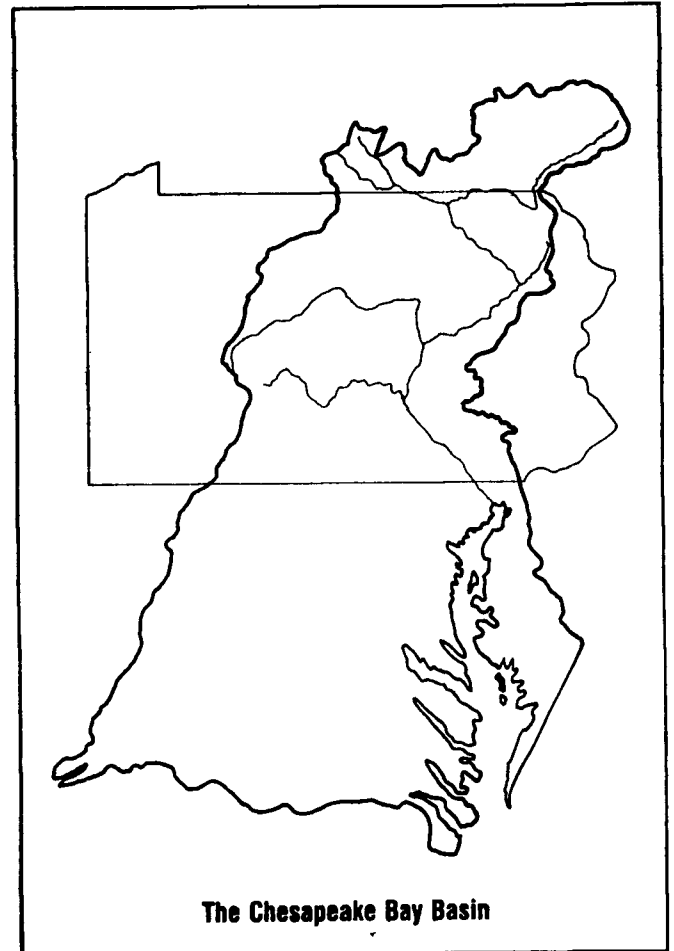
tion was owned by F. Mark and Kim Weber. It had an average of 24,461 pounds of milk, and ranked second for average protein and butterfat production with 783 pounds of protein, and 868 pounds of butterfat.

Webers also were recognized for being the most improved DHIA herd in the county. Their herd increased an average milk produc-

tion of 4,174 pounds; and 135 pounds protein per cow, and 87 pounds fat.

Further, the Webers were presented with the award for being the top winner in the DHIA herd management competition.

Hiddenvew Holssteins with an average production of 24,323 pounds, was the second highest (Turn to Page A33)



The Chesapeake Bay Basin

This is an outline of the area covered in the Chesapeake Bay Basin. Farmers in this region can install streambank fencing free of charge in a new Bay program supervised by DER and administered by the local conservation districts.

CONTACT US

For

- DOUBLE CHAIN PIT ELEVATORS
- HYD. TILT AVAILABLE
- COMPACT ROTO BEATERS
- WISCONSIN & ALLIS CHALMER POWER UNITS
- HAND-O-MATIC BUNK FEEDERS
- COMBINATION MOWER AND CRIMPER UNITS
- 455 AND 456 MOWERS
- NEW IDEA CRUSHERS
- LARGE SHOP LATHE
- 40 TON PUNCH PRESS
- CRIMPING ROLLS TO FIT YOUR NEW IDEA CRUSHER

SMUCKER

WELDING & MANUFACTURING
2110 Rockvale Road, Lanc., PA 17602

Clip & Save

NEW

NO PEEL BARN PAINTING

Barns in Lancaster & Surrounding Counties Are Ruined By Overcoating. Resurfacing Is The Remedy!

- a) Resurface by waterblasting using your pressure washer with the new dirt chaser gun, or have it done professionally.
- b) Into this resurfaced wood we first coat with a new stain paint for deep penetration.
- c) Second coat penetrates first coat. Both coats are brushed with the finest bristles to control film thickness.
- d) This thin film will not peel, because it is in the wood giving it a double life.
- e) Starting today we go back to methods used in a period of time when there was no peeling.

Save this advertisement and write or call for free estimate

NO PEEL BARN PAINTING

PHARES S. HURST
233 E. Maple Grove Rd.
Narvon, PA 17555
215-445-6186

Clip & Save

Insist on Chore-Time

because you need the *best* equipment



CHORE TIME C-2 feeder for broilers



CHORE TIME H-2 feeder for broilers



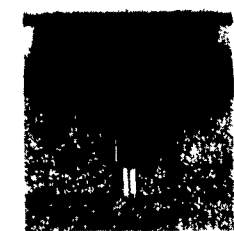
CHORE TIME H-2 feeder for turkeys



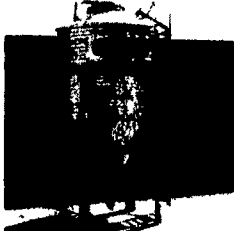
CHORE TIME adult turkey feeder with plastic pan



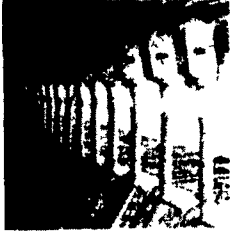
CHORE TIME ULTRAFLO® for layers, pullets & breeders



CHORE TIME nipples



CHORE TIME bins and FLEX-AUGER®



CHORE TIME swine feeding



CHORE TIME cage systems



Pennsylvania's authorized CHORE TIME master distributor

Attention all Chore-Time customers. Chore-Time systems, Chore-Time repair parts and service are available to you from Northeast Agri Systems, Inc., Pennsylvania's authorized Chore-Time master distributor.



Northeast Agri Systems, Inc.

Flyway Business Park
139A West Airport Road
Lititz, PA 17543

STORE HOURS Mon.-Fri. 7:30 to 4:30
Sat. 8:00 to Noon
24 Hr. 7 Day Repair Service

1-800-673-2580

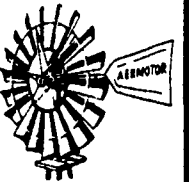
Ph (717) 569-2702



Office & Counter Closed Friday & Saturday December 24 & 25 / December 31 & January 1

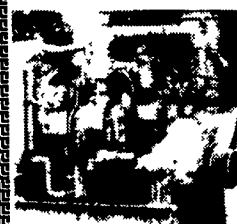
WINDMILLS ON YOUR MIND?

We've got them.
Send \$2 for our catalog.
O'Brock Windmills
9435 12th St.
North Benton, Ohio 44449
(216) 584-4681



Diesel Engine Service

- Industrial - Agricultural - Automotive
- New - Rebuilt - Used Engines & Power Units
- New & Used Replacement Parts
- Parts & Service On Twin Disc & Rockford Clutches
- Diesel Engine Rebuilding & Repair Service
- Detroit Diesel Series 53-71-92 & 8.2 Diesels 48-500 HP



13 Pleasant Valley Rd
Ephrata, PA 17522

(717) 733-3890
(717) 738-3146 FAX