

Best Buys in Used Equipment

TRACTORS

- Case IH 885
- Case IH 7120
- Case SC Tractor
- Case 430
- Case 630 — \$1,500
- Case 870 Tractor
- Case 1370
- IH 856 w/Loader
- IH 2500A Tractor w/Loader
- David Brown 990 w/Loader
- Int. 674
- Int. 886
- Farmall H w/Loader
- Farmall 300
- Ford 8N
- Farmall 350

HARVESTING EQUIPMENT

- Hesston 2000-100 Harvester
- NI 717 Combine
- NI 844N
- NI 315 Sheller
- NI 324 Sheller
- NI 727 Husking Bed
- NI 767 Super Chopper
- NI 323 1-Row Corn-picker
- NI 325 12 Row Husking Bed
- IH 120 Forage Box

- JD 8300 Drill—Soybean Special
- Martin's Equalizer
- NI 3622 Spreader
- NI 3626 Spreader
- Ford Loader

LOADERS

- Case 530 Backhoe
- Case 1835B
- Case 1835C
- Case 1835 Gas
- Case 1830
- Case 1840 Loader
- Case 1845C
- Loader For Case 530
- Case 1845 Diesel
- NH 555 Skid Loader
- Case 1845B Diesel

TILLAGE

- Int. 2-Bot. Trailer Plow
- Ford 5-Bottom Plow
- Case 16" Reset Plow, 5 Bottom
- IH 710 5-Bottom Plow
- JD 6-18 Plow
- JD 1120 Disk
- Bush Hog 15 Ft. Disk
- Case 7 Tooth Consortil
- Landoll Consortil, 7-Tooth
- Ford 10 Ft. Disk Harrow
- IH 720, 18" 5-Bottom Plow

MISCELLANEOUS

- Farmaster Tumble Mixer
- Kverneland Bale Wrapper
- NH 36 ft. Elevator
- Gehl 99 Blower
- NI 620 Blower
- Automatic Roller Mill
- NI 213 Spreader
- NI 218 Spreader
- NI 224 Spreader
- NI 245 Spreader
- HM 1674 Spreader
- Gehl 250 Spreader
- 500 Gal. Century Sprayer
- Weaverline 430, Nice
- High Rise Cart
- IH 5100 Drill

HAY EQUIPMENT

- Hesston 1150 Mower Conditioner
- NH 78 Baler
- NH 479 Haybine
- NH 278 Baler
- NH 1495 SP
- Hesston 1014's, \$2,600
- Hesston 1090 Wind-roller
- Hesston 1091 Wind-roller
- IH 445 Square Baler
- IH 1190 Mower Cond.
- NI 486 Round Baler
- (2) Case Int. 8330 Windrower

ZIMMERMAN'S FARM SERVICE

1/2 Mile West Off Rt. 501 On School Rd., Bethel, Pa.
717-933-4114



COUNTRY BOY MFG.

1601 King St.
Lebanon, PA 17042
Phone (800) 584-3601

- Hog Shelters
- Pallet Racking
- Mezzanines
- Steel Supply
- Sheet, Plate, Angles, Channels

Madey Farms
Windber, PA (814) 467 8839

- Case 380 dsl., cab, ldr., 3 pt & PTO, 48 hp
 - IH 5488 C/A 2800 hrs..... \$23,500
 - IH 504 Gas, nice..... \$4,800
 - Case 2590 w/Cab & rebuilt Engine .. \$16,500
 - Case 1070 fender tractor..... \$6,800
 - 1030 Case dsl..... \$4,800
 - Case 2290 Cab, Air..... \$12,900
 - Belarus 31 HP. dsl. w/ldr & PS. 197 hrs
 - Used Snow Blowers 5' to 8 1/2' 540 & 1000 PTO
- JD, IH, McKee, Lorenz and New Idea



(2) JD 455 D
\$17,000 Choice

J & F Equipment

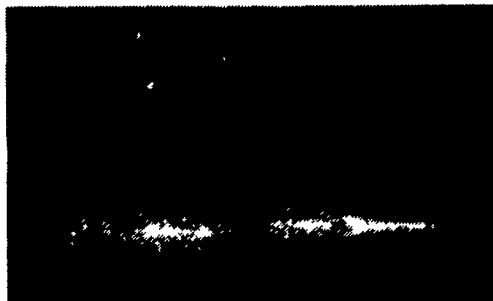
(717) 859-3283
No Reasonable Offer Refused
Custom Repairs On All Makes Industrial & Farm Equipment



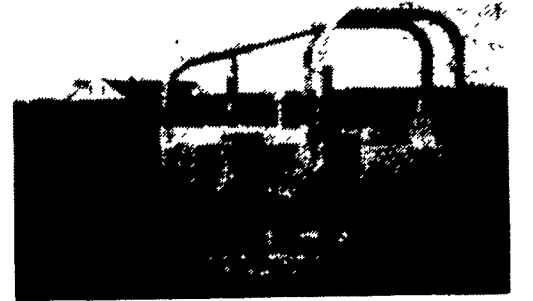
JD 350C
Rebuilt Motor, new tracks,
New UC \$13,000

WE ARE BUYERS FOR CONSTRUCTION EQUIPMENT NEEDING REPAIRS

- Case DH4 Diesel Backhoe Trencher..... \$6,000
- '87 Case 1835B..... \$7,500
- Case 450 Crawler Loader, new paint, rebuilt motor..... \$7,200
- Cat 955H crawler loader, new pins, bushings & sprockets, real strong machine..... \$9,000
- Dresser TD7E, 6-way..... \$13,000
- JD 310A Backhoe, full cab, real shape machine..... \$10,500
- JD 350 crawler loader..... \$8,000
- JD 440B log skidder, 90% rubber..... \$11,000
- JD 450C crawler loader w/logging forks & winch..... \$15,000
- JD 450C Crawler Loader, Rebuilt Motor, New Pins & Bushings..... \$13,500
- JD 450C, 6-Way, rebuilt motor, trans, new paint..... \$14,000
- Komatsu D65S Crawler Loader..... \$10,500
- Komatsu D53A crawler, straight blade w/tilt..... \$13,500
- Mitsubishi 90 excavator, good cond..... \$18,500



(2) JD 450 C Rebuilt Motors,
New Pins & Bushings
\$13,500 Choice



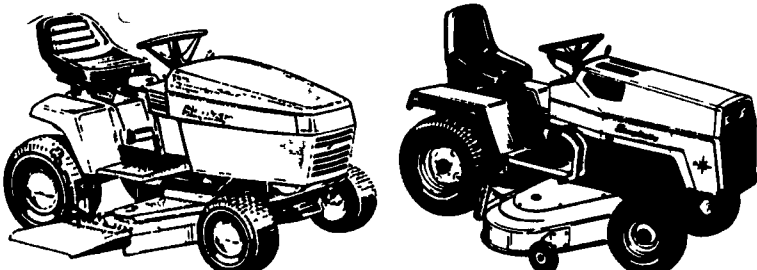
Dresser TD7E, Rebuilt Motor,
New Chains, Rebuilt Blade
\$14,000



Simplicity

0% INTEREST

NO MONTHLY PAYMENTS TILL APRIL 1, 1994



MOST MODELS IN STOCK

USED LAWN TRACTORS — READY TO GO

AC 916 - AC 912 - AGOLD7 - AC 410 -
John Deere 300, 214, 212, 210, 110

USED TRACTORS

- AC 7060 Powershift Tractor
- IH 806, AC 160
- AC-200 Tractors
- AC XT190 Series III
- AC 7040
- AC 7040 Powershift Tractor
- AC 7050 Tractor
- AC 190XT (Good Cond.)
- IH 3444 With Loader
- Oliver 66, Good Cond.
- AC C w/Mower
- Case 311
- Case 580B Backhoe
- Deutz Allis 6275, 1200 Hr.

WINCO
Generator w/Diesel
Engine

New & Used
Woods Mowers

USED EQUIPMENT

- 'red NH, Gehl, Bobcat Skid Loader
- 14 AC Baler
- H 880 2 Row Chopper
- I Mounted Corn Picker, Very Good Shape

GLEANER COMBINES

- M Combine
- G Combine w/Corn & Grain Head
- F w/Corn & Grain Head
- Brillon 8 Ft. Seeders

NEW & USED
BOBCAT'S IN STOCK
FINANCING & LEASING
AVAILABLE
SHIP PARTS DAILY UPS

GRUMELLI'S FARM SERVICE INC.

929 ROBERT FULTON HWY.
QUARRYVILLE, PA. 17566

717-786-7318



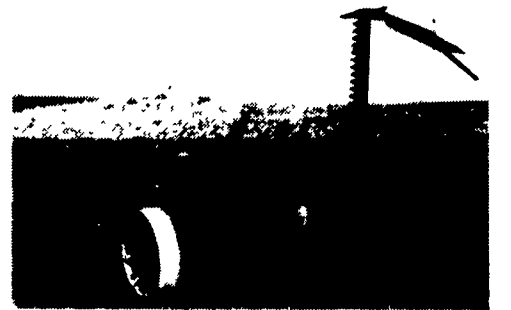
1.5 Mile South Of Quarryville On 222

See Salesmen: Tony Grumelli, Clarence Herr, Don Fichtner

The I & J Cultivator



CULTIVATORS: 3 point or horse drawn available in 1-2-3- or 4 rows can be used as a field cultivator with a few attachments. Great for vegetables. We can custom build. Options: rolling shields, disc hillers, liquid side dressers, row tracking system.

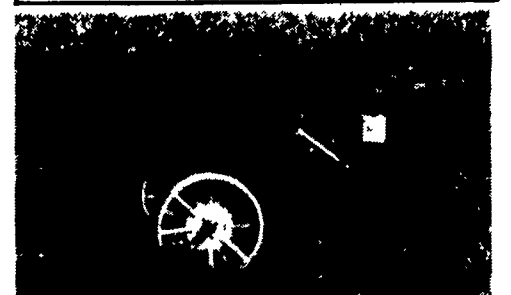


MOWERS: 3 point or trailing features: guards & blade, move back and forth cuts like a scissors, virtually no plugging.

8% OFF ALL CULTIVATORS
BOUGHT UP TO 12/31/93



RAKES: available in ground drive or PTO steel wheels or rubber tires Features: forms a very fluffy windrow, can also be used as a windrow inverter. Does not rope hay. A real leaf saver.



DEEP TILL SLITTER: Available in 1 or 2 shanks, optional hydraulics. On Sale Now

Corn binders: get your orders in by June 1, 1994

We Also Carry Flex Tine Harrows

I & J MANUFACTURING

Dept. LF, 5302 Amish Road • Gap, PA 17527

717-442-9451

(Call Between 8:45-9:00 A.M. Weekday Ask For Jake)