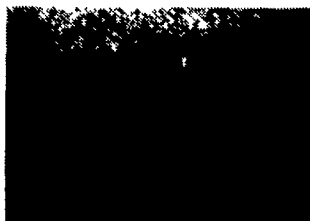




1993 Navistar 4700 DTA 360, Allison AT, Air Brakes, 11xR22.5, 31,000 GVW, 26' Waco Moving Van, Double Curb Doors, Left Side Door, Rear Barn Doors, Like New, 13,000 Miles. Stk #1659.



1992 Ford E350 14' HI Cube, 7.3 Diesel, ATO, PS, PB, Cruise, AC, 10,700 GVW, 25,000 Miles, Like New.



1992 Ford E250 300, ATO, PS, PB, AC, 7,200 GVW, 47,000 Miles, Like New, #1720

\$11,500



1990 Ford E250 351, AT, PS, PB, AC, 7,900 GVW, 40,000 Miles, #1696

\$8,900



1990 Chev G30 Ext. Cargo PS, PB, AT, FI 350, 8600 GVW, 59,000 Miles, 41,000 Miles On Engine, Extra Clean Stk #1644.



1990 Chevy P30 Grumman 18' Step Van, Dual Wheel, 350, PS, PB, AT, Radial Tires, 10,000 GVW, 79,000 Miles. Stk #1620.

Four Way Auto Sales

770 West Main St., New Holland, PA 17557

717-354-3199

OVER 60 YEARS IN BUSINESS!

WOLF MOTOR CO.

ROUTES 72 & 283, LANCASTER, PA 17601

CENTRAL PA'S

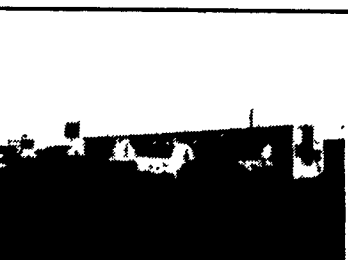
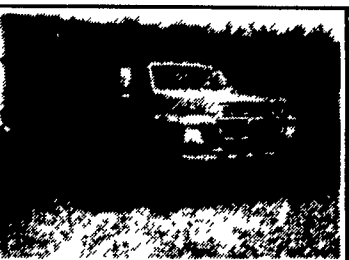
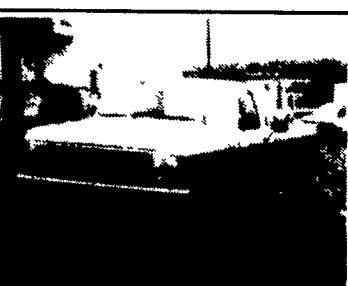
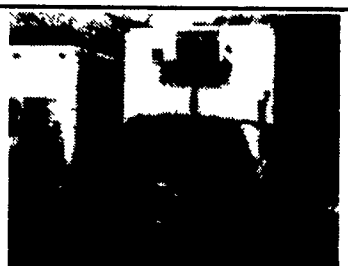
FORD TRUCK DEALER

Sales Reps. Bill Martensen Gary Brennenman
Dennis Asel, Mgr.

717-299-4331 Toll Free 800-637-6612



Large Selection Of Diesel Turbos In Stock



Large Selection
F Model Cabs &
Chassis
26,000-33,000 GVW

PINE TREE MOTORS

Rt. 322 & Clearview Road, Clay
Lancaster Co., PA
717-738-2242

- 1990 Ford Aerostar XL, AWD, auto, air..... \$12,500
- 1990 Dodge Dually Ram 350 P.U., Cummins Diesel 5 Spd. \$16,800
- 1989 Dodge Grand Caravan LE V6, Auto, Loaded \$8,500
- 1988 Dodge Grand Caravan SE, V6 \$6,400
- 1988 Dodge Ram 350 Box Truck, V8, 5 Spd. Call
- 1986 Dodge Ram Panel Van, 6 cyl., auto \$3,900
- 1986 Dodge Van 250 Royal, V8, Auto, Air \$5,800
- 1986 Dodge Van 250 Royal, V8; Auto, Air \$3,900
- 1986 Ply. Voyager, 5 pass., auto, air \$3,995
- 1986 Dodge Ram Panel Van, 6 cyl., auto \$3,900
- 1985 Dodge Caravan LE, 7 Pass., auto, air "Black" \$4,895
- 1984 Ford Step Van, 6 Cyl., 4 spd. \$2,500
- 1984 Mazda B2000 PU trk, 5 spd. \$1,250
- 1983 GMC 3500 Box Trk, diesel, refer, liftgate ... \$5,895
- 1982 Chev S-10 Longbed PU trk, V6, 4 spd. \$2,500
- 1981 Int. Crew Cab Dump Trk, auto, gas \$3,500
- 1970 Int. Loadstar 1600, 14 ft. box trk \$1,895

GOOD USED TRUCKS



SHEEHY LEBANON

FORD • MERCURY • LINCOLN

100 N. 45th Sunday Sheehy, Lebanon, PA 17046 • 538-5243
20th & CUMBERLAND STS - RT 422 WEST



INTERNATIONAL 6x6 BRIDGE TRANSPORTING STAKE BODY TRUCKS

Front Winch, PS, Air Brake, 1400/20 Tires, 21 ft. Bed with removable steel racks. Continental 6 cyl. engine. LIKE NEW 800-2,500 Miles. Excellent for off road heavy duty cargo transporting with their all wheel drive and ability to climb a maximum grade of 70 degrees. Double Frame. A must for every farmer \$9,450 Each.

(814) 834-1018 St. Marys, Pa.

- 1990 Pontiac Firebird V6, AT, Loaded, T-Tops, White, 45,100 Mi. \$6,900
- 1990 Ford F-150 PU 4x4, 6 Cyl., AT, AC, AM-FM Cass., Blue, 114,000 Mi. \$6,900
- 1989 Pontiac Grand Am LE, Quad 4, 5 Spd., AC, CR, Tilt, AM-FM, White, 39,900 Mi. \$5,800
- 1989 Chevy Astro CL 7 Pass, V6, AT, Loaded, Maroon/Gray, 71,800 Mi. \$7,900
- 1988 Olds Cutlass Supreme, V6, AT, Loaded, Black, 56,000 Mi. \$6,900
- 1988 Chevy Beretta GTU V6, 5 Spd., Loaded, Black, 61,600 Mi. \$5,900
- 1987 Jeep Wrangler Softop 4x4, 4 Cyl., 5 Spd., Yellow, 64,600 Mi. \$5,900
- 1987 Dodge Colt Turbo 4 Cyl., AT, AC, AM-FM Cass., Blue, 56,400 Mi. \$3,900
- 1986 Mercury Colony Park SW, V8, AT, Loaded, Brown, 78,100 Mi. \$3,600
- 1985 GMC Suburban 2500 Sierra Classic, 454 V8, AT, Loaded, Blue/Gray, 77,900 Mi. \$6,600
- 1983 Ford Bronco XLT V8, AT, Loaded, Black, 108,100 Mi. \$4,400

Brubaker's Auto Sales

Myerstown, PA

717-866-5237

CLEARANCE SALE

NEW Trailers At USED Prices

	RETAIL	SALE
★ Horse Trailers		
1991 Circle M 2 Horse	5399.25	3970.00
1991 Circle M 2 Horse	5399.25	3970.00
1991 Circle M 2 Horse w/Tack Room	6870.50	5015.00
★ Heavy Equipment Trailers		
1990 Redi-Haul R2529PF	7640.00	5525.00
1990 Redi-Haul R2129GF Gooseneck	7850.00	5675.00
1990 Redi-Haul R2127F	5600.00	4095.00
★ Selected Utility Trailers		
1991 D&D 10'x70" Red	1295.00	895.00
1991 D&D 10'x70" Black	1295.00	895.00

★ NO REASONABLE OFFER REFUSED

★ 15% Off Drawlite Items

- Hitches
- Brake Controllers
- Hitch Balls

★ \$5.00 Off Trailer Inspection

★ PLUS MGS has a large selection of new & used trailers in stock

Please Bring Ad For Discount Prices
Good Thru Dec. 31, 1993



INCORPORATED



178 MUDDY CREEK CHURCH ROAD
DENVER, PA 17517

1 (800) 952-4228