

Top Lancaster DHIA Cows By Protein For November

(Continued from Page C4)

169	RH	9-3	305	30,097	2.8	829	3.4	1014
316	RH	3-3	296	24,687	3.2	798	3.9	965
293	RH	4-2	304	24,489	3.2	791	3.6	876
GRAYWOOD FARMS								
321	GR-H	6-6	305	28,899	3.1	895	3.0	867
428	GR-H	4-1	305	28,434	3.1	870	2.3	646
271	GR-H	7-8	296	26,804	3.2	851	3.3	887
147	GR-H	4-2	305	24,269	3.2	787	3.1	759
196	GR-H	4-3	305	26,222	3.0	776	2.7	705
HERSHVALE FARMS								
62	RH	6-4	305	30,322	2.9	884	3.3	1000
34	RH	4-1	305	25,591	3.0	780	3.9	1010
THOMAS C LAPP								
LULU	RH	4-0	305	29,024	3.0	883	2.9	832
NELSON + JANE STONER								
177	RH	5-4	305	30,383	2.9	880	2.8	848
131	RH	6-7	305	31,626	2.7	868	3.3	1030
81	RH	3-1	305	25,479	3.1	792	2.6	654
HENRY F STOLTZFUS JR								
HILARY	RH	5-1	305	30,161	2.9	875	2.9	872
EARL & ANNA MAE REIFF								
BUBBLE	GR-H	6-4	305	26,758	3.3	874	3.3	893
SARA	GR-H	6-11	305	26,796	2.9	775	4.0	1063
FLOYD KREIDER & SON								
69	RH	4-2	305	27,348	3.2	874	3.8	1033
KENNETH E ZURIN								
428	RH	4-4	305	29,631	2.9	870	3.3	969
687	GR-H	7-4	305	26,805	3.2	866	3.8	1012
584	GR-H	3-3	305	28,463	3.0	863	3.1	896
451	RH	4-2	305	26,995	3.0	812	2.9	785
647	RH	7-10	305	28,837	2.8	811	2.6	755
575	GR-H	8-3	305	25,295	3.2	807	3.7	939
714	GR-H	2-6	305	25,625	3.1	802	3.5	897
608	RH	3-1	305	25,772	3.1	801	2.7	696
538	GR-H	3-7	305	21,251	3.7	784	4.3	918
743	GR-H	2-1	305	23,542	3.3	773	3.7	870
BEN+MARIAN STOLTZFUS								
NELLIE	GR-H	4-9	305	26,913	3.2	870	3.7	989
JAMES M HERTZLER								
I 119	GR-H	3-3	305	26,730	3.2	867	3.3	873
242	GR-H	5-8	285	26,625	3.1	817	2.7	729
DAVID W SWEIGART								
213	GR-H	4-2	305	28,336	3.1	866	2.8	806
ROHRER BROTHERS								
BABE	RH	5-1	305	28,073	3.1	859	3.6	1004
MARTHA	RH	5-5	305	25,331	3.1	774	3.0	752
JOHN Z WEAVER								
204	GR-H	3-3	305	28,844	3.0	857	3.1	886
LUKE E MARTIN								
83	GR-H	3-3	305	27,224	3.1	856	3.3	911
KARL W HERR								
SHARON	RH	5-6	305	29,647	2.9	855	3.5	1039
GRACE	RH	5-5	305	26,178	3.2	837	3.5	922

HARRY L TROOP								
ROSALIN	RH	4-4	305	26,508	3.2	852	3.3	873
MAPLEHOPE FARMS INC								
102	GR-H	3-2	305	26,850	3.2	851	3.3	879
31	RH	8-11	305	25,971	3.0	792	3.2	833
IVAN K LAPP								
179	RH	4-1	305	26,473	3.2	851	4.1	1084
GORDON & CAROLE HOOVER								
104	RH	4-5	305	26,490	3.2	850	3.6	953
39	RH	3-0	305	23,419	3.3	777	3.2	753
JOHN L BEILER								
KELLIE	GR-H	4-0	305	28,035	3.0	849	3.3	916
MARVEL	RH	4-5	305	22,828	3.6	833	3.9	897
NEW ACRES								
76	GR-H	3-6	305	27,992	3.0	849	3.6	1010
JOHN P LAPP								
QUIN	RH	7-0	305	26,344	3.2	848	3.8	1000
TONETA	RH	3-1	305	27,117	3.0	819	3.0	824
CINDY	RH	7-1	305	24,827	3.2	788	3.4	854
ROBERT L & LINDA SENSENIG								
76	GR-H	5-1	305	23,456	3.6	846	4.4	1036
55	GR-H	5-0	305	25,984	3.1	803	3.2	835
RUNNING SPRINGS FARM								
P C	RH	4-4	305	30,425	2.8	845	3.3	1008
DIANE	GR-H	6-4	289	29,764	2.8	841	2.7	793
DELIAH	GR-H	3-2	295	26,068	3.0	781	2.7	695
LLOYD K WISE								
CORA		5-3	305	26,764	3.2	844	4.2	1112
CARMAN	GR-H	6-11	305	26,437	3.1	810	3.7	965
JONAS O SENSENIG								
6	GR-H	3-8	305	28,650	2.9	843	3.0	870
JOHN G GOOD								
IDA	RH	3-7	305	25,135	3.3	841	3.3	834
TOM ZARTHMAN								
229	GR-H	2-6	305	25,979	3.2	840	2.8	715
STONEY-HILL FARM								
WHITIE	GR-H	3-2	305	27,295	3.1	840	2.1	569
TWIN OAK FARMS								
135	GR-H	4-1	305	26,020	3.2	839	3.6	933
RED KNOB FARM								
1069	GR-H	4-3	291	28,385	2.9	837	3.1	872
1224	GR-H	3-0	305	27,996	3.0	836	2.4	667
1001	GR-H	5-0	305	26,078	3.2	833	3.8	995
1137	GR-H	3-5	305	27,920	2.9	816	3.5	977
878	GR-H	5-11	305	26,986	3.0	804	3.4	925
1073	GR-H	4-3	280	24,631	3.3	802	2.8	684
1348	GR-H	2-0	305	23,191	3.4	787	3.7	856
1062	GR-H	4-4	305	23,436	3.3	775	3.6	855
LENEWOOD FARM								
SOPHIE	RH	8-0	305	25,640	3.3	836	3.2	816
ROY E SENSENIG								
33	RH	3-3	305	23,078	3.6	836	3.2	743

(Turn to Page D3)

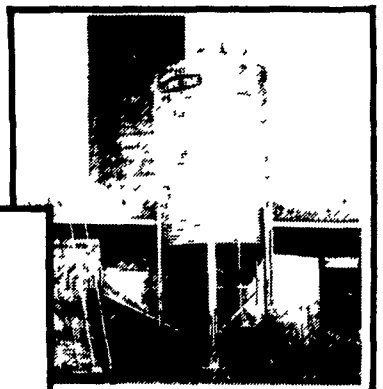


CHORE-TIME BINS AND AUGERS



Take 'em Down!

We Stock Truckloads
Of Chore-Time Bins &
Miles Of Chore-Time
FLEX-AUGER



Put 'em Up!



Bins...
Large Or Small



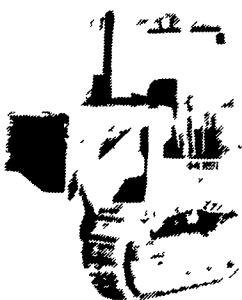
We Will Assemble & Deliver
Bins To Your Farm



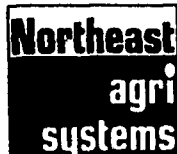
Custom Applications

Leon Ray Martin Excavating

710 Fivepointville Rd. • Denver, PA 17517
General Excavating Site Preparation
(215) 445-4667



We Have A Backhoe, Loader & Pan
To Better Serve Your
Excavating Needs



Pennsylvania's authorized **CHORE-TIME** master distributor

Northeast Agri Systems, Inc.

Flyway Business Park
139A West Airport Road
Uitiz, PA 17543

Ph: (717) 569-2702

STORE HOURS: Mon.-Fri. 7:30 to 4:30
Sat. 8:00 to Noon
24 Hr. 7 Day Repair Service

1-800-673-2580



FOR FREE ESTIMATES
CALL OUR TOLL-FREE
CUSTOMER
SERVICE NUMBER:
1-800-673-2580