

Lancaster Co. Livestock Market Auctions

Lancaster Livestock Auction
Lancaster, Pa.
Monday, December 6, 1993
Cattle Calves Hogs Sheep Goats
Monday's Auction
730 79 448 1119 571
Last Monday
701 68 391 854 443
Last Year
894 115 221 1013 723

CATTLE: Slaughter steers weak to mostly 50 lower; slaughter heifers mostly steady; cows steady to 1.00 lower; bullocks steady; bulls weak to 1.00 lower. Supply included 48% slaughter steers, 19% slaughter heifers, 21% cows, and 12% bulls.
SLAUGHTER STEERS: Choice 2-3 few 4 1100-1450 lb 69.25-72.50, few 72.50-72.85; High Choice and Prime 2-4 1260-1425 lb 72.25-73.50; few Choice 2 1135-1400 lb 73.50-74.50; couple lots Choice mostly 3 1450-1565 lb 65.75-70.35; Select and low Choice 2-3 1300-1650 lb 64.75-69.00.
HOLSTEINS: Choice 2-3 1200-1500 lb 61.00-63.00; Select 1-3 1150-1575 lb 60.00-61.50.

SLAUGHTER HEIFERS: Choice 2-3 1000-1300 lb 65.75-70.00; few Choice 2 1050-1225 lb 70.00-71.50; Choice 3-4 1000-1150 lb 62.75-65.75; Select 1-3 950-1200 lb 59.75-65.50.
COWS: LO DRESSING BULK HI DRESSING Breaking Utility & Commercial 2-3 45.00-47.50 47.50-48.50 Commercial 3-4 38.00-44.00 Cutter & Boning Utility 1-3 41.50-43.00 43.00-46.50 46.50-47.50 Canner & low Cutter 1-2 39.00-40.00 40.00-41.50.

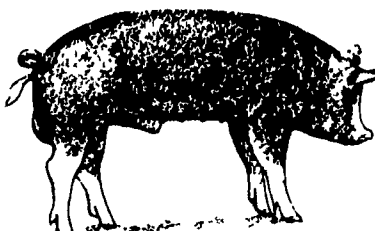
BULLOCKS: Choice 2-3 11550-1375 lb 66.75-69.50, couple 70.00-73.75, with a couple 1285-1480 lb 77.50-80.00; few Select 2-3 1050-1350 lb 62.50-66.00.
BULLS: Yield grade 1 1300-1900 lb 60.00-65.00, few 66.00-69.00, with 12 head 1590-2265 lb 70.00-74.75; Yield grade 2 1050-1550 lb 55.00-60.00, five head 2050-2300 lb 55.00-58.50.
CALVES: Vealers not tested; slaughter calves steady. Demand good for Holstein bulls to return to farm.

SLAUGHTER CALVES: Good and Choice 300-500 lb 65.00-85.00.
RETURNED TO FARM: Bulk 90-120 lb Holstein bulls 140.00-165.00.
HOGS: Barrows and gilts 1.00-2.00 lower; sows weak to 1.00 lower.
BARROWS AND GILTS: US 1-2 215-245 lb 39.50-40.00. US 1-3 210-255 lb 38.50-39.50. US 2-3 260-290 lb 36.00-38.50.

SOWS: US 1-3 300-600 lb 30.00-33.00.
BOARS: All Weights 28.00-29.00.
SHEEP: Slaughter lambs 5.00-10.00 lower; slaughter ewes steady. Supply included an estimated 70% slaughter lambs with the balance slaughter ewes.

SLAUGHTER LAMBS: Choice 2-3 80-110 lb 69.00-75.00, 60-80 lb 75.00-83.00, few 35-60 lb 85.00-91.00, few 115-140 lb 62.00-68.00.
NEW CROP LAMBS: Choice 2 40-70 lb 100.00-145.00.
SLAUGHTER EWES: Utility and Good 30.00-45.00; Yearlings and two-year olds 40.00-55.00.

GOATS: All goats sold by the head. Large 75.00-100.00, around 35 head 110.00-160.00; few Thin 50.00-75.00. Medium 40.00-55.00; few Thin 35.00-40.00. Small, mainly kids, 25.00-35.00. Around 100 head Angora 25.00-40.00.



Vintage Livestock Auction
Paradise, Pa.
Tuesday, December 7, 1993
Report Supplied by USDA
Cattle Calves Sheep Goats

Today
656 1058 3 1
Last Tuesday
733 995 2 7
Last Year
686 886 3 0

CATTLE..USDA.. Supply included 21% slaughter steers and 68% cows.. Compared with Tuesday's market: sl. steers weak to .50 lower; cows 1.00 to 1.50 lower; other classes not fully tested.
SLAUGHTER STEERS: Choice 2-3 1075/1400 lbs. 69.00-71.50, few 71.50-72.50, Choice and Prime 2-3 1150/1375 lbs. 72.75-74.00, couple 74.50-75.00, Choice 3 to mostly 4 1150/1480 lbs. 67.25-69.25, Select and Low Choice 2-3 1050/1400 lbs. 66.00-69.50, few Select 2-3 1100/1350 lbs. 62.75-66.25. **HOLSTEINS:** few Choice 1500/1550 lbs. 60.00-62.50, Select 1-3 1200/1400 lbs. 56.50-59.50. **HEIFERS:** few Choice 2-3 1025/1070 lbs. 67.75-71.75. **COWS:** Breaking Utility and Commercial 2-3 bulk 43.75-45.00, high dressing 45.00-46.75, Commercial 3-4 bulk 40.00-43.00, Cutter and Boning Utility 1-3 bulk 42.00-45.00, high dressing 45.00-46.50, Canner and Low Cutter 1-2 low dressing 36.00-38.50, bulk 38.50-42.00. **BULLS:** Yield Grade No. 2 1300/1850 lbs. 54.00-58.25.
CALVES..Vealers steady. Supply included 843 in graded sale of which 95% sold to return to farm. **VEALERS:** couple Choice 210/290 lbs. 87.00-90.00, High Good and Low Choice 125/360 lbs. 70.00-80.00, few 80/105 lbs. 45.00-55.00, Standard and Low Good 65/80 lbs. 30.00-45.00. **RETURNED TO FARM:** 45 head 120/125 lbs. Holstein bulls 140.00-152.00, 265 head 95/115 lbs. 157.00-163.00, 45 head 90 lbs. 150.00-151.00 and 45 head 70/80 lbs. 100.00-110.00, 30 head small frame 110/120 lbs. 122.00-127.00, 140 head 90/105 lbs. 132.00-141.00 and 55 head 80/85 lbs. 75.00-95.00; 60 head 90/115 lbs. Holstein heifers 205.00-222.00, 10 head small frame 90/110 lbs. 197.00-199.00, 30 head 80/85 lbs. 100.00-110.00 and 20 head 70/75 lbs. 45.00-60.00.
SHEEP..Insufficient volume for a market test.
GOATS..Insufficient volume for a market test.

Lancaster Livestock Auction
Wednesday's market report has been discontinued until further notice because of insubstantial receipts.

Grantsville Livestock
Grantsville, Maryland
Report Supplied by Auction
Sat., December 4, 1993

STOCK BULLS AND STEERS 200-500 LBS. 70.00-87.00.
STOCK HEIFERS: 55.00-78.00.
SLAUGHTER STEERS GOOD TO CHOICE, NONE AVAILABLE; MEDIUM TO GOOD UP TO 64.00.
FEEDER STEERS GOOD 70.00-80.00; LIGHT 68.00-87.00.
SLAUGHTER HEIFERS GOOD TO CHOICE, NONE AVAILABLE; MEDIUM TO GOOD 54.00-62.00.
BULLS HEAVY 50.00-65.00, LIGHT 45.00-51.50.
COWS FEW HIGH DRESSING 42.50-50.00, UTILITY HOLSTEIN 42.50-48.75, CANNERS 36.00-43.50, CULLS 36.00 AND DOWN.
VEALS GOOD TO CHOICE 85.00-91.00, MEDIUM TO GOOD 60.00-84.00.
BOB CALVES: 40.00 AND DOWN. **HOLSTEIN BULL CALVES** RETURN TO FARM 90-120 LBS. 100.00-138.00. **HOLSTEIN HEIFER CALVES** RETURN TO FARM 100-120 LBS. UP TO 130.00.
BEEF CROSS CALVES RETURN TO FARM UP TO 105.00.
HOGS TOP QUALITY 40.00-41.00; HEAVY 38.00-40.50, LIGHT 35.00-40.00, FEEDER PIGS BY THE HEAD 20.00-36.00.
SOWS 28.00-34.00.
MALE HOGS 24.00-30.50.
LAMBS 58.00-70.00, LIGHT 70.00-82.00.
SHEEP 20.00-29.00.

North Jersey Livestock
Hackettstown, NJ
Report Supplied by Auction
Tuesday, December 7, 1993
Report supplied by auction

CALVES .21-.205.
COWS .25-.51.
EASY COWS .10-.45%.
HEIFERS .25-.63.
BULLS .45-.69%.
STEERS .35-.68%.
HOGS .28-.43.
ROASTING PIGS EACH 25.00-31.00.
BOARS .22-.28.
SOWS .15-.31.
SHEEP .21-.53.
LAMBS EACH 28.00-76.00.
LAMBS PER LB. .39-1.07.
GOATS EACH 15.00-105.00.
KIDS EACH 20.00-75.00.
TOTAL 1400.

New Holland Dairy
New Holland Sales Stables
Wednesday, December 8, 1993
Report supplied by auction

DAIRY COWS 129; **HEIFERS** 180 AND 14 BULLS. MARKET STEADY. **LOCAL FRESH COWS** 670.00-1185.00.
FRESH HEIFERS 885.00-1400.00.
LOCAL SPRINGERS 560.00-1210.00, FEW 1500.00-1650.00.
UPSTATE LOADS FRESH 225.00-1675.00, **SPRINGERS** 1025.00-1575.00.
BETTER FRESH COWS 1375.00-1575.00.
HERD OF 44 HEAD ALL STAGE COWS 550.00-1375.00.
SPRINGING HEIFERS LARGE 1010.00-1250.00, SMALL 650.00-885.00.
SHORTBRED HEIFERS 635.00-875.00.
OPEN BREEDING AGE HEIFERS 585.00-710.00, **SMALL OPEN HEIFERS** 310.00-515.00.
REGISTERED HEIFERS 1175.00-1325.00.
BULLS: PUREBRED 585.00-985.00, GRADES 625.00-750.00.



LEBANON VALLEY LIVESTOCK MARKET, INC.
1 mile East of Fredericksburg along Rt. 22
PHONE JONESTOWN 865-2881
Flea Market Auction every Tuesday at 12:30, Tools, Eggs, Produce, etc.
Buyers & Sellers Welcome

New Holland Livestock
New Holland, Pa.
Thursday, December 9, 1993
Market not reported by USDA.
Reported by Sherry Bunting
Lancaster Livestock Reporter

SLAUGHTER CATTLE: 1257 HEAD, LAST WEEK 1283, LAST YEAR 781 (STORM-REDUCED RECEIPTS). COMPATED TO TUESDAY. **SLAUGHTER STEERS** .50-1.00 LOWER. SUPPLY INCLUDED MANY LARGE, HEAVY YIELD GRADE 4-5 CATTLE RECEIVING ADDITIONAL DISCOUNTS. DEMAND BEST FOR CHOICE AND PRIME 1100-1350 LB. STEERS; YIELD GRADE 4-5 TOLERATED IN LOTS WEIGHING UNDER 1425 LB. AND EXHIBITING BETTER OVERALL QUALITY OF FINISH. **SLAUGHTER HEIFER** RECEIPTS INSUFFICIENT TO FULLY TEST TREND. **COWS** 1.00-2.00 HIGHER. **BULLS** 1.00-2.00 LOWER.
SLAUGHTER STEERS: 525 HEAD, LAST WEEK 453, LAST YEAR 223, CHOICE 2-4, 1045-1425 LB. 67.75-71.25, FEW HIGH YIELDING LOTS TO 72.85, OUTSTANDING INDIVIDUALS 73.00-76.00; YIELD GRADE 3-5, 1280-1775 LB. 63.75-68.50 (UP TO AND INCLUDING OR APPROACHING PRIME); MIXED CHOICE & PRIME 2-4, 1167-1425 LB. 71.00-73.35, FEW 74.50; SELECT & LOW CHOICE 2-4 1020-1660 LB. 64.00-67.00; SELECT 1-3, 1050-1350 LB. 62.00-66.00. **HOLSTEINS:** STEADY TO WEAK, CHOICE 2-3, 1210-1590 LB. 60.75-65.00; SELECT 1-3, 1315-1660 LB. 54.75-61.00.
HEIFERS: 35 HEAD, LAST WEEK 50, LAST YEAR 20. CHOICE 2-4, 950-1195 LB. 60.25-65.25; FEW LARGE FRAME 1615 LB. 62.00.
COWS: 483 HEAD, LAST WEEK 530, LAST YEAR 550. **BRKNG. UT. & COMM.** 2-3, 44.25-47.25; **COM.** 3-4, 35.00-43.25; **BN. UT.** 1-3, 44.00-47.00, HIGH DRESSING 47.25-50.50; **CUTTER** 1-2 42.00-43.75; **CAN. & LOW CUTTER** 39.00-42.75, **LOW DRESSING** 36.00-39.00.
BULLS: 50 HEAD, LAST WEEK 50, LAST YEAR 40, YIELD GRADE 1, 1200-1735 LB. 59.25-62.75; YIELD GRADE 2 1275-2030 LB. 54.75-58.25.
BULLOCKS: FEW CHOICE 2-3, 1020-1470 LB. 62.75-66.25, **INDIVIDUAL** 73.75.
CALVES: 614 HEAD. **VEALERS:** CHOICE 200-350 LB. 70.00-85.00, **COUPLE** 100.00; **HIGH GOOD & LOW CHOICE** 80-115 LB. 40.00-60.00. **RETURNED TO FARM:** **HOLSTEIN BULLS:** BULK 90-125 LB. 125.00-140.00, FEW TO 150.00; **LIGHTER WEIGHTS** 60.00-100.00. **GOOD HOLSTEIN HEIFERS** 90-120 LB. 180.00-220.00; **LIGHTERWEIGHT** 90.00 AND DOWN.
SHEEP: 412 HEAD. **LAMBS:** NEW CROP: CHOICE 25-45 LB. 127.00-140.00. CHOICE 80-105 LB. 55.00-65.00. **SLAUGHTER EWES:** UTILITY & GOOD 20.00-40.00.
GOATS: 189 HEAD. **PER HEAD:** LARGE 60.00-70.00, SEVERAL 110.00-140.00; MEDIUM 45.00-55.00; SMALL 20.00-45.00.

Lancaster County Weekly
LANCASTER, PA
DECEMBER 10, 1993

CATTLE CALVES
THIS WEEK 2850 1750
LAST WEEK 2929 1837
LAST YEAR 2986 1452
CATTLE: Slaughter steers 1.00-1.50 lower; slaughter heifers steady to weak; cows 1.00-3.00 lower; bullocks steady; bulls weak to 1.00 lower. This report covers only Monday and Tuesday markets.
SLAUGHTER STEERS: Choice 2-3 few 4 1075-1450 lb 69.00-72.00, few 72.00-72.85; Choice and Prime 2-3 1150-1375 lb 72.75-74.00, couple 74.25-75.00; few lots high Choice and Prime 3-4 1260-1425 lb 72.25-73.50; Select and low Choice 2-3 1100-1450 lb 64.75-69.00; few Select 2-3 1100-1350 lb 62.75-66.25.
HOLSTEINS: Choice 2-3 1200-1500 lb 60.00-63.00; Select 2-3 1150-1575 lb 56.50-60.50.
SLAUGHTER HEIFERS: Choice 2-3 1000-1300 lb 65.75-70.00; few Choice 2 1050-1225 lb 70.00-71.75; Choice 3-4 1000-1150 lb 62.75-65.75; Select 1-3 950-1200 lb 59.75-65.50.
COWS: LOW DRESSING BULK HIGH DRESSING Breaking Utility & Commercial 2-3 43.75-45.00 45.00-48.00. Commercial 3-4 39.00-45.00 Cutter & Boning Utility 1-3 41.00-42.00 42.00-45.00 45.00-47.00. Canner and low Cutter 36.00-38.50 38.50-42.00.
BULLOCKS: Choice 2-3 1150-1375 lb 66.75-69.50, couple 70.00-73.75; Select 1-3 1050-1300 lb 62.50-66.00.
BULLS: Yield grade 1 1300-1900 lb 60.00-65.00, few 65.00-69.00, with 12 head 1590-2265 lb 70.00-74.75; Yield grade 2 1050-1550 lb 55.00-60.00, five head 2050-2300 lb 55.00-58.50.
CALVES: Small supply vealers steady; slaughter calves steady. Demand good for Holstein bulls and heifers to return to farm. **VEALERS:** Couple Choice 210-290 lb 87.00-90.00; high Good and low Choice 125-360 lb 70.00-80.00, 80-110 lb 45.00-55.00.
SLAUGHTER CALVES: Good and Choice 300-500 lb 65.00-85.00.
RETURNED TO FARM: Bulk 90-125 lb Holstein bulls 140.00-163.00; small frame 90-120 lb 122.00-141.00, few 80-85 lb 75.00-95.00; bulk 90-115 lb Holstein heifers 205.00-220.00; few small frame 90-110 lb 197.00-199.00 and few 80-85 lb 100.00-110.00.

WANT ADS

The Inexpensive Way to Shop

VINTAGE SALES STABLES, INC.

SALE TUESDAYS
10:30 A.M. **7:30 P.M.**
SLAUGHTER CATTLE AUCTION — STEERS, BULLS, HEIFERS, COWS, FEEDER CATTLE
CALVES, SHEEP, GOATS
* GET CALVES IN EARLY — OUR STATE GRADER STARTS AT 1:00 P.M.
Selling Feeders Every Tuesday
At Approx. 2 PM

FOR MORE INFORMATION CONTACT:
L. ROBERT FRAME, SR., PRESIDENT
BUS (717) 442-4181 BUS (717) 768-8204
HOME (215) 458-8518
IRWIN MARTIN, FIELD REP.
(717) 733-7434
KENNETH E. HERSHEY, FIELD REP.
(717) 442-4874
TRUCKING SERVICE AVAIL.-LOCAL & LONG DISTANCE (RT. 30, 10 MILES EAST OF LANCASTER IN PARADISE, PA)

HAY, STRAW & CORN — SALE —
Please Note New Sale Time!
Starting Jan. 3
Sale Starts 10 AM
Every Friday AT 10 AM



GREEN DRAGON MARKET & AUCTION
RD No. 4 Ephrata, Pa. 717-738-1117
1 mile North of Ephrata on N. State St.
Out of State Buyers - Cash or Certified Check Only

B&R CATTLE CO.
RD 1, Marietta, PA 17547
Office Phone: (717) 653-8164
Specializing In Stockers & Feeders
JOHN BOWMAN
Ph. (717) 653-5728
RON RANCK
Ph. (717) 656-9849

