



**Philadelphia Fruit Market**  
Philadelphia, Pa.

Wednesday, December 8, 1993

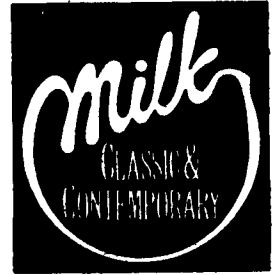
**CITRUS FRUITS ---GRAPEFRUIT:** MARKET STEADY 4/5 buctns FL Indian River Red 18s 8.00-9.00 23s 8.00-9.00 27s 8.00-9.00 fr qual 7.00 32s 8.00 fr qual 7.00 36s 7.50 fr qual 4.00-5.00 mos 5.00 40s 7.00-9.00 fr qual 4.00-6.00 48s 6.00 fr qual 4.00-5.00 56s 5.50-6.00 Star Ruby 36s 10.00 White 40s 8.00 48s 7.00 Interior Red 18s 8.00-9.00 23s 8.00-9.00 27s 8.00-9.00 fr qual 5.00 32s 8.00 fr qual 5.00 36s 7.50 fr qual 5.00 40s 7.00 fr qual 5.00 48s 6.00 fr qual 5.00 56s 5.50-6.50 fr qual 5.00 ---**LEMONS:** MARKET ABOUT STEADY ctns AZ 115s fr qual few 22.00 140s fr qual few 13.00-14.00 165s fr qual 11.00 CA 95s 34.00 115s 22.00-24.00 140s 16.00 fr qual 13.50 165s 13.00-13.50 fr qual 11.50 200s 12.00 fr qual 11.00 ---**LIMES:** MARKET SLIGHTLY LOWER 10 lb ctns MX Seedless Type 48s 6.00-6.50 mostly 6.50 few hias 7.50 54s 6.00-6.50 mostly 6.50 few hias 7.50 63s 6.00-6.50 mostly 6.50 few

hias 7.50 ---**MISC CITRUS:** 1/4 buctns FL Kumquats 15.00 2.5 kg crts SP Clementine 36s 5.50-6.00 40s 5.00-5.50 28s 6.00-6.50 10 kg crts SP Clementine 96s 21.00 108s 18.00-21.00 few 22.00 120s 18.00-19.00 few 22.00 140s 18.50 ---**ORANGES:** MARKET STEADY ctns CA Navel 56s 14.00-15.50 72s 12.50-14.50 fr qual 12.50 88s 12.50-13.50 fr cond 10.00-11.00 fr qual 12.00 113s 11.00-13.00 fr qual 11.00-11.50 fr qual & cond 8.00-9.00 138s 11.00 4/5 buctns FL Navel 48s one label 12.50 64s 10.00 fr cond 7.00-8.00 100s 8.00 fr cond 5.00-6.00 Hamlins 64s 9.00 80s 8.00-9.00 100s 7.00-8.00 125s 6.00-7.00 mostly 6.50 one label 8.50 ---**TANGELOS:** MARKET STEADY 4/5 buctns FL Orlando 100s 10.50 125s 9.50 ---**TANGERINES:** MARKET ABOUT STEADY 1/2 bu ctns CA Fairchild lge 14.00 with stems and leaves 4/5 buctns/crts FL Sunburst 80s 19.00 100s 19.00 120s 14.00-15.00 fr cond 6.00-8.00 150s 12.00 fr cond 6.00-8.00 180s 8.00-10.00 210s 8.00 ---**TEMPLES:** OFFERINGS NONE. **BERRIES ---BLUEBERRIES:** OFFERINGS LIGHT fits 12 5.6-oz cups CL AIR

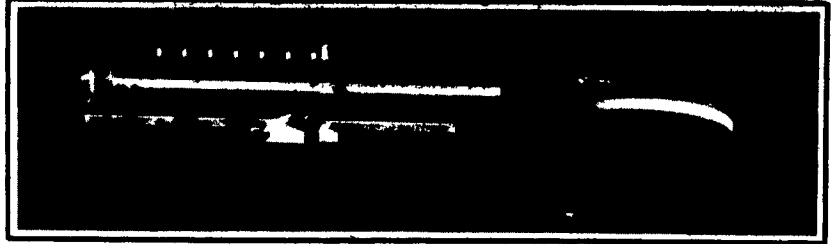
med 30.00-35.00 fr cond loas 22.00 ---**CRANBERRIES:** ctns 24 12-oz flmbgs MA Late Howe few 35.00 ---**MISC BERRIES:** fits 12 125gm cups CL AIR Blackberries 15.00-18.00 CR AIR Blackberries 15.00-18.00 GU AIR Blackberries 15.00-18.00 ---**RASPBERRIES:** MARKET LOWER fits 12 4.4-oz cups flmwrpd CL AIR Red 20.00-24.00 ---**STRAWBERRIES:** MARKET LOWER fits 12 1-pt bkts CA med-lge one label 26.00 fr cond 15.00-18.00 med 15.00 FL med-lge 18.00 fr cond loas 15.00 MX med-lge fr cond 12.00-15.00 fits 8 250gm cups with lids CB AIR med-lge 14.00 fr cond 12.00. **MELONS ---CANTALOUPS:** MARKET ABOUT STEADY 1/2 ctns GU 9s 18.00-20.00 12s 22.00-24.00 15s 23.00-27.00 18s 23.00-27.00 23s 25.00 MX 23s 25.00 ---**HONEYDEWS:** MARKET ABOUT STEADY 2/3 ctns BR 4s 14.00 5s 14.00 6s 14.00 8s 12.00 GU 5s few 15.00 6s few 15.00 8s few 14.00 MX 5s fr cond 10.00-11.00 6s fr cond 10.00-11.00 ---**MISC MELONS:** 2/3 ctns GU Crenshaw 5s 16.00 6s 16.00 Juan Canary 5s 16.00 8s 16.00 5 kg cntrs EC Pepino 15s 30.00 ---**WATERMELONS:** OFFERINGS INSUFFICIENT TO QUOTE. **NON-CITRUS FRUITS ---APPLES:** MARKET STEADY REGULAR STORAGE ctns trypk CA U.S. ExFcy Granny Smith 72s 24.00 80s 20.00-23.00 88s 20.00 100s 16.00 Fuji 88s 21.00-23.00 ID IDExFcy Red Delicious 72s 14.00 80s 14.00 few 15.00 88s 14.00 few 15.00 100s 14.00 113s 14.00 125s 12.00-13.00 ID Fcy Red Delicious 100s 12.00-13.00 WA WAExFcy Red Delicious 64s 20.00 72s 20.00 80s 18.50 88s 18.50 #2 16.00 100s 16.50-17.50 113s 16.50 #2 14.00 Golden

Delicious 80s 32.00 88s 31.00 100s 23.00 113s 20.00 Granny Smith 88s 22.00 100s 17.00 U.S. ExFcy Golden Delicious 100s 18.00-20.00 125s 14.00-15.00 WA Fcy Red Delicious 80s 12.00-12.50 88s 12.00-12.50 100s 12.00-12.50 113s 12.00 ctns celpk NY U.S. One McIntosh 80s 10.00 100s 9.00 VT U.S. One McIntosh 80s 9.50 100s 9.50 ctns 12 3-lb flmbgs NY U.S. Fcy McIntosh 2 1/4" min 9.00 ---**APRICOTS:** TOO FEW SALES TO QUOTE ---**AVOCADOS:** OFFERINGS LIGHT ctns 2 lyr CL Hass 60s 35.00 ctns 1 lyr CL Hass 16s 15.00 18s 15.00 ---**BANANAS:** 40 lb ctns IMPORT 10.50 fr qual 9.00 few 6.50-8.00 40 lb ctns bagged IMPORT 10.50 ctns institutional pk IMPORT petite 12.00 ---**CHERRIES:** OFFERINGS INSUFFICIENT TO QUOTE ---**FRUITS OTHER:** ctns 1 lyr CR Carambola - Star Fruit 25s 15.00 passion fruit 10-lb ctns mx 40.00 ---**GRAPES:** MARKET STEADY 23 lb lugs CA Ribiers 13.00-15.00 Calmeria 13.00-15.00 Emperor 13.00-14.50 Red Globe few 23.00 20-21 lb lugs bgd CA Thompson Seedless ord cond 3.00-5.00 Ruby Seedless 13.00-15.00 mostly 14.00 ord cond 5.00-6.00 Ribiers 12.00-13.00 20-21 lb lugs wrpd CA Italia 11.00-12.00 18 lb lugs bgd CA Ruby Seedless lge 18.00-19.00 18 lb lugs wrpd CL Perlette 30.00 occ 29.00 Flame Seedless 28.00 16 lb lugs bgd CA Thompson Seedless 20.00-21.00 16 lb lugs wrpd CA Thompson Seedless lge 18.00-22.00 one label 28.00 Red Seedless 26.00 Black Seedless 16.00-17.00 Emperor 25.00 ---**KIWIFRUIT:** MARKET STEADY fits 1 lyr CA 36s 7.50-8.00 39s 7.00-7.50 mostly 7.00 NZ 39s 7.00 42s 7.00 ctns 23 lb lsc

CA 49 sz 13.50 46 sz 13.50 ---**MANGOES:** ctns 1 lyr BR Tommy Atkins 9s 10.50 12s 12.50 ---**NECTARINES:** OFFERINGS INSUFFICIENT TO QUOTE ---**PAPAYA:** 10 lb ctns JM 10s 9.50 12s 13.00 ---**PEACHES:** OFFERINGS LIGHT lugs 2-lyr trypk CL Springcrest 70 series few 10.00 ---**PEARS:** MARKET STEADY 4/5 buctns wrpd OR U.S. One D'Anjou 100s 19.00 Bosc 70s 23.00 80s 23.00 90s 23.00 100s 21.00 120s 20.00 OR Fcy Bosc 110s 22.00 WA U.S. One D'Anjou 70s 19.00 80s 19.00 100s 18.50 120s 16.50 135s 15.50 WAExFcy D'Anjou 100s 18.00 120s 16.00 ---**PERSIMMONS:** MARKET STEADY ctns 1 lyr CA Fuyu 18s 8.00-9.00 mostly 8.00 20s 7.00 occ 6.50 24s 5.00 Hachiya 20s 6.00-8.00 24s 5.00-6.00 00 27s one label 7.00 ---**PINEAPPLES:** ctns HI AIR 6s 12.00 ---**PLANTAINS:** OFFERINGS INSUFFICIENT TO QUOTE ---**PLUMS:** OFFERINGS INSUFFICIENT TO QUOTE ---**POMEGRANATES:** OFFERINGS LIGHT lugs 2-lyr CA Wonderful 20s 26.00 30s 21.00 42s 20.00 ---**PRUNES:** OFFERINGS NONE.



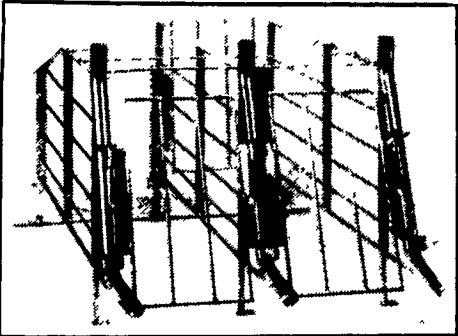
**TRI-COUNTY CONFINEMENT SYSTEMS, INC.**  
Total Swine Confinement Systems Center



Recently Completed 1200 Sow Feeder Pig Unit  
Tunnel Ventilated Gestation (4) Farrowing Rooms (7) Nursery Rooms

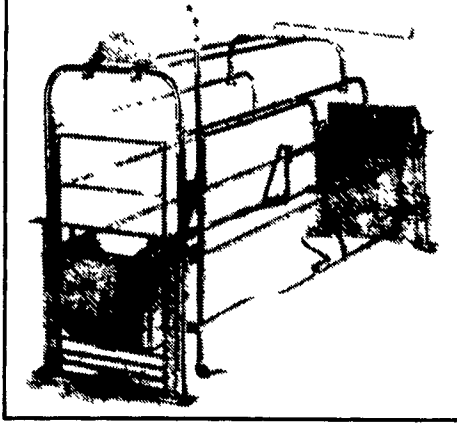


3000 Head "Double Wide"  
Deep Pit Finishing Building



**PIG SAVER "DUTCH CRATE"**

Developed through testing in our research farms the goal was to develop a crate that nearly eliminates crushing, due to lay ons, unmatched durability and be easy to work around. All this has been achieved by a unique gravity fill-pail that forces sows to lie down slowly and using stainless steel for rear doors and legs, proven horizontal and solid steel red construction. All this at a reasonable cost. Crates also can be installed on an angle.

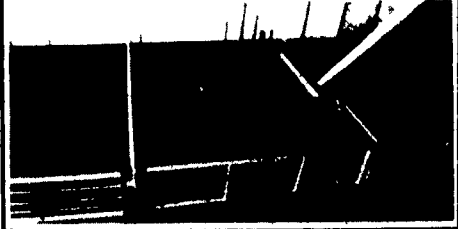


**FINISHING PENNING**

Optional stainless steel verticals and fasteners offer improved durability over other similar types of penning. Loop and flapper latch arrangement eliminates the use of drop pins. Stainless steel fence line feeders provide excellent durability and a minimum of waste.

**CONFINEMENT STALL**

Developed recently in our R&D farms. Our goals were convenience, safety and durability. The low back and flat top rails are easy to reach over, with no sharp edges. Stainless steel rear legs and front feet along with solid steel horizontal rods through punched uprights provide the strongest, most durable stall ever produced by Tri-County (21"-36" O.C. x 84")



**NURSERY PENNING**

Nursery penning has been improved by the use of an optional solid stainless steel panel on the front gates which keeps walkways clean. Stainless steel verticals on penning eliminates corrosion where penning attaches to the floor. Stainless steel drinker pipes & mounting brackets also increase durability.

**NEED MORE FARM INCOME? Feeder Pig & Finishing Units Have Proven To Be An Excellent Source Of Full Or Part-Time Income For Many Successful Producers. Tri-County Can Assist You With Cash Flows - Financing - Nutrient Management- Building Permits**

**CHECK OUR PRICE BEFORE YOU BUY!**

**TRI-COUNTY CONFINEMENT SYSTEMS, INC.**

603 E. Evergreen Rd. Lebanon, PA 17042 717-271-3488

Hours: Mon-Fri 8:00 to 1:30, Sat 8:00 to 12:00, WE SHIP UPS DAILY

State of the Art **STRATFORD COAL STOVES**  
**DUSSINGER'S QUALITY STOVES**  
2633 OLD PHILA. PIKE, Rt. 340, Smoketown, PA 3 Miles East of Lancaster Tues., Thurs. & Fri. 10-6; Wed. & Sat. 10-5  
**(717) 397-7539**

**Garden Spot Tobacco**  
We are now receiving tobacco daily at our warehouse -  
**Rt. 322 & Reidenbach Rd.**  
Early delivery means more \$ in your pocket  
**700 Reidenbach Rd. New Holland, PA**  
**(717) 354-6934**  
**(717) 354-2340**

**MARTIN MACHINERY**  
**GENERATORS**  
Sales ★ Service ★ Rentals  
\* Complete Generator Systems  
\* PTO \* Portables \* 2-1600 KW  
"We Service It If You Have It And Sell It If You Need It"  
**34 W. Mohler Church Rd. Ephrata, PA 17522**  
**Tel: 717-738-0300**  
**Fax: 717-738-4329**