

Bonnie's Tull, OTSS Broker Top National Limousin Show

LOUISVILLE, Ky. — Excitement was high as 142 Limousin females and 46 bulls competed for top honors at the National Limousin Show. Open show judge Steve Reimer, Chamberlin, S.D. and his associate judge Vern Suhn, Eureka, Kans. evaluated classes at the event, held recently at the North American International Livestock Expo.

A March 5, 1992 daughter of WRC Punch and out of TEXS Star Mercy was selected 1993 national grand champion Limousin female. Bonnie's Tull 202B had previously been selected division IV champion. She is owned by a partnership of JCL Cattle Company and Tullis Limousin Farm, Welch, Okla. and H&L Limousin, Lebanon, Mo.

Wulf's Daisy May 2243B, the 1993 national reserve grand champion female, also took the division III champion honors. She is a May 3, 1992 daughter of Wulf's Rambler 8400X and out of Wulf's Miranda 9109X owned by Wulf & Sons, Morris, Minn.

Stewman Ranches, Maryneal, Texas led out the 1993 national grand champion bull OTSS Broker 2124B. Judges Reimer and Suhn selected this April 1, 1992 son of YKCC Top Line 180X and out of YKCL Miss Virginia R103V as division III champion bull before slapping him grand champion. The national reserve grand champion Limousin bull was also reserve champion in division III. American Breeders Service, Inc., De Forest, Wis. showed Wulf's Polled Impact 4244B, an April 3, 1992 son of Wulf's Rambler 8400X and out of Miss Wolfette 4244S.

Cane Ridge Cattle Company, Paris, Ky., took the division I champion female with Cane Ridge Polled Genie. She is an April 23, 1993 daughter of Wulf's Home Run 9226AA and out of Cane Ridge Temptress 404W. Division I reserve champion female came from Dunlap, Iowa with Sullivan Limousin. SLVL Black Brandi 13C is a January 3, 1993 daughter of NICO Polled Legacy and out of SCF Extra Easy 241Y.

Lance Hall, Sweetwater, Texas led out the division II champion female with LCHA Elegance, a December 6, 1992 daughter of YKCC Front Page 435X and out of Miss OTSS 7056V. A partnership of Magness Land & Cattle, Platteville, Colorado and Rock Ridge Limousin, Burbank, Oklahoma, had the division II reserve champion female MAGS Benji, a September 4, 1992 daughter of YKCC Top Line 180X and out of MK Tansy.

Reserve champion female in division III went to Stewman Ranches. OTSS Miss 2110B is a June 1, 1992 daughter of TEXS Ranger Primo and out of VRCC 113Y.

Division IV reserve champion female, MAGS Borrowed Trouble, a January 7, 1992 daughter of WLCC Turbo and out of MK Upsy in Command, was shown by D. Jeffrey Berry, Port Orchard, Washington.

Cane Ridge Cattle Company rounded out their wins in the female classes with cow/calf division champion Cane Ridge Temptress 404W, a February 12, 1988 Craftsman 9021S daughter and out of TEXS Star Dream Girl. Her heifer calf by Wulf's Home Run 9226AA was champion of division I. Reserve champion in the cow/calf division went to Symens

Hill Ranch, Sisseton, South Dakota; Straight Limousin, Logan, Iowa and Thunder Farms, Ooltewah, Tennessee. Straights Chei, a March 18, 1991 daughter of CLLL Shenandoah and out of Straights Miss 635U, showed with her March 27, 1993 heifer calf Jamie 600C by MLDY Patriot 125A.

Division I champion bull honors went to the Polled Arrow Syndicate. YKCC Polled Arrow 200C, by YKCC Top Line 180X and out of YKCC Vintage Wine 406X, was born on March 31, 1993. SHLI Cowboy, the division I reserve champion bull, is a January 20, 1993 son of Polled Pack Leader 1182U and out of SHLI Annie 4P shown by Shane Lindsey, Colfax, Iowa.

In division II, champion bull honors went to GPFF Fresh Power, a September 9, 1992 son of Polled Power Buit 8V and out of DFLC Fresh Start, owned by Sugar Maple Leaf Farm, Mill-

brook, New York. Reserve champion bull in this division was Wulf's Impulse 8028B, an October 1, 1992 son of Polled Senator FPHP 15Y and out of Miss Wolfette 8021K. Impulse is owned by Wulf & Sons.

Dugan Stewart, Philip, South Dakota, took home division IV champion bull honors on MR SY Deluxe 716B, a March 18, 1992 son of SY Polled 770W and out of Miss SY Lieutenant 118Y. Reserve champion bull in division IV was MAGS BoJangles, owned by Magness Land & Cattle and Ramos Limousin, Chihuahua, Mexico. BoJangles is a January 9, 1992 son of WLCC Turbo and out of MK Upsy in Command.

Triple F Limousin, Paris, Kentucky, won junior get-of-sire champion honors on progeny by Wulf's Polled Progress. Premier breeder honors went to Magness Land & Cattle. Sullivan Limousin, Dunlap, Iowa was named premier exhibitor.

OTSS Ballerina Tops Junior Limousin Show

ENGLEWOOD, Colo. — Limousin junior heifer show competition was extremely competitive as Frank Jackson, Bentonville, Arkansas evaluated classes in the largest junior Limousin show ever held at the North American International Livestock Exposition (NAILE) held recently in Louisville, Ky.

Clint Petzold from Clinton, Okla., showed the grand champion female of the junior heifer show — OTSS Ballerina 2101B, an April 21, 1992 daughter of YKCC Top Line 180X and out of

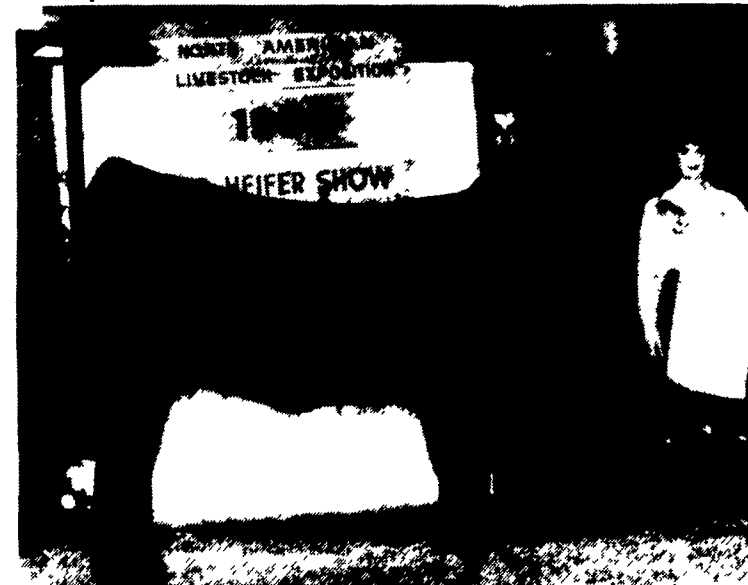
YKCL Miss Virginia R103V.

Reserve grand champion female of the junior heifer show was D&M Miss Abby 144B, a February 23, 1992 Northern Rivalry ZJW 85Z daughter out of D&M Miss Black I 144T, shown by Lance Sennett, Waynetown, Ind.

Champion bred and owned in the junior show went to Amy Martin, Harrison, Ark., on her female ML Mary Ann, a February 21, 1993 Polled Power Buit 8V daughter out of AGLF Miss Mary 004U.



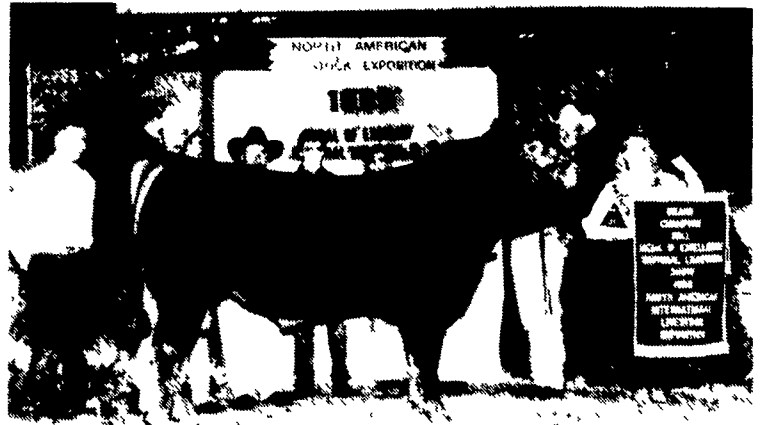
In the Limousin junior heifer show at the North American International Livestock Expo, OTSS Ballerina 2101B, shown by Clint Petzold, Clinton, Okla., was selected grand champion female.



D&M Miss Abby 144B, shown by Lance Sennett, Waynetown, Ind., was reserve grand champion female at the Limousin junior heifer show at the North American International Livestock Expo held in Louisville, Ky.



Bonnie's Tull, owned by JCL Cattle Company and Tullis Limousin Farm, Welch, Oklahoma and H&L Limousin, Lebanon, Missouri, was slapped grand champion female at the National Limousin Show, held in conjunction with the North American International Livestock Exposition in Louisville, Kentucky.



Broker 2124B, owned by Stewman Ranches, Maryneal, Texas, was awarded grand champion Limousin bull honors at the National Limousin Show. The National was held in Louisville, Kentucky in conjunction with the North American International Livestock Expo.

Limousin Sale Has Top Average At NAILE

ENGLEWOOD, Colo. — Demand for Limousin genetics continued to sizzle at the National Limousin Sale, held recently at the North American International Livestock Exposition (NAILE) in Louisville, Ky.

An overflow crowd watched 46.25 lots sell under the seasoned gavels of auctioneers C.K. "Sonny" Booth and Bruce Brooks for an average of \$5,396—the highest averaging single-breed sale at NAILE.

OAKM Lady Darlene 774A, a September 29, 1991 daughter of TEXS Ranger Primo and out of TEXS Star Delight, topped the sale. The fullblood, previously slapped grand champion female at the 1993 All-American Limousin Futurity, was consigned to the National Limousin Sale by Sullivan Limousin, Dunlap, Iowa and Shane Lindsey, Colfax, Iowa. Express Limousin Ranches made the winning bid to take half interest and full possession to Yukon, Okla., for \$20,500.

Wes Hudson, judge for the sale show, slapped the second high seller grand champion female of the pre-sale show. A polled, purebred, September 2, 1992 daughter of SY Polled Satisfaction and out of Miss OTSS Sable 7006V, OTSS Betty Lou brought \$18,750 on a bid from Minerich Land & Cattle, Richmond, Kentucky. Stewman Ranches, Maryneal, Texas consigned her.

For \$16,000, Cane Ridge Cattle Company, Paris, Ky. and newsome Livestock, Jackson, Miss., purchased an embryo flush of five

guaranteed pregnancies from the 1993 National Junior Heifer Show grand champion female, Wulf's Autumn Angel. This double-polled purebred is a September 18, 1992 daughter of Wulf's Challenger 6044Y and out of Miss Wolfette 9051X. The flush was consigned by Wulf & Sons, Morris, Minn.

Minerich Land & Cattle paid \$15,250 to round out their sale-topping purchases with a September 20, 1992 daughter of LKCC Tomahawk's Touchdown and out of Wulf's Black Satin. Consigned by Circle L Limousin, Wadsworth, Ohio, the female, CLLL Touch of Spain, is a purebred—double-black and double-polled.

EXLR Miss Coppertone 459B, the reserve grand champion female at the sale show, sold for \$9,250. Express Limousin Ranch consigned this December 24, 1992 daughter of GLNM Polled Cis-mont 050Y and out of Pretty Penny RBLB 160Y. Pinegar Limousin, Springfield, Mo., took her home on the winning bid.

A December 30, 1992 daughter of NICO Polled Legacy and out of SCF Extra Easy 241Y consigned by Sullivan Limousin sold for \$8,600. Polled, purebred and black, SLVL Easy Girl went to the herds of Dorminy Brothers and Deni Dorminy, Fitzgerald, Ga.

Deer Valley Farm, Fayetteville, Tenn. consigned DVFC Mary Lou 901B, a September 21, 1992 daughter of TEXS Ranger Ted and out of OAKF Peggy Sue 9411X. Edgemont Limousin, Kiowa, Okla., gave the winning \$8,300 bid for this fullblood.