

TRUCK CRAFT



PICKUP INSERT DUMPER
For FREE brochure, call toll free 24 hr.
1-800-755-3867

FOR SALE
36" Air sliding
8th wheels
Call
1-800-732-0004

Sewer service truck 1000 gallon tank, Ford industrial engine, high pressure jet cleaner, mounted on Ford chassis, good condition, \$5,000. 28' tandem flat trailer, army surplus, 4' sides, nice condition, \$1,500. (215)579-7084.

L9000 rebuilt 270 turbo Cummins, 10 speed Road Ranger, new air, PTO, 11Flx22 tires, 26' aluminum dump trailer, all w/excellent tires and brakes, \$13,500. 717-683-6191.

For Sale: Heavy duty gooseneck trailer, 20' lated, 8-6000lb Tor-flex axle, like new condition, \$4400. Lanc. 215/445-9459.

Stake body, good sides off F350, \$200 OBO. 609-566-4566.
WANTED: used 20' aluminum dump bed for tri-axle, high sides. 301/582-4738.

GOOD FARM TRAILERS
24' Al. Dump w/Sides
8700 Gal. NH 3 or LP
Call (215) 689-9492
Leave Message



94 K-3500
10,000 GVW Trailing Special, 454 Gas, Auto, Loaded, Silverado



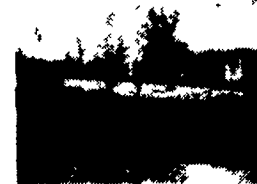
2 - 86 Ford F350
1 - 4x2 Jerr-Dan
1 - 4x4 Eagle Claw
Both 5 Speed, Both Gas



94 S-10 Ext. Cab
4x4 Off Road Pkg.,
195 HP, 6 Cylinder



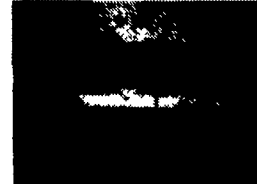
94 Chev S-10
Supersport, Hard To Find,
Auto & Air



94 Chev K2500
Short Bed, Diesel,
Teal/Silver, Loaded,
Trailing Spec.



94 Chev K-30
Diesel, Loaded, Black,
Red Interior,
Trailing Special



94 K3500
Ext. Cab Dually, Diesel,
Loaded, Trailing Special

Bill MacIntyre Auto Group
10 E. Walnut Street, Lock Haven, PA 17745
Toll Free 1-800-343-7366
Dealership for Kodiak Trucks
Contact: Don Muthler



1990 Chev G30 Ext. Cargo PS, PB, AT, FI 350, 8600 GVW, 59,000 Miles, 41,000 Miles On Engine, Extra Clean Stk #1644.



1992 Ford E250 300, ATO, PS, PB, AC, 7,200 GVW, 47,000 Miles, Like New, #1720
\$11,500



1990 Chevy P30 Grumman 18' Step Van, Dual Wheel, 350, PS, PB, AT, Radial Tires, 10,000 GVW, 79,000 Miles. Stk #1620.



1992 Ford E350 14' Hi Cube, 7.3 Diesel, ATO, PS, PB, Cruise, AC, 10,700 GVW, 25,000 Miles, Like New.



1993 Navistar 4700 DTA 360, Allison AT, Air Brakes, 11xR22.5, 31,000 GVW, 26' Waco Moving Van, Double Curb Doors, Left Side Door, Rear Barn Doors, Like New, 13,000 Miles. Stk #1659.



1990 Ford E250 351, AT, PS, PB, AC, 7,900 GVW, 40,000 Miles, #1696
\$8,900

Four Way Auto Sales
770 West Main St., New Holland, PA 17557
717-354-3199

Nicest
Pre Owned
Trucks
Anywhere!

RTE. 422,
WEST
LEBANON, PA
(Across From Lebanon
Valley Mall)



717-274-2000
FAX
717-274-2717

Business Hours
Mon-Thurs 9-9
Fri. & Sat 9-4

THIS IS JUST A SMALL PORTION OF OUR HUGE INVENTORY



4x4 Crew Cab Dually, 89 Chevy Runa Great, New Inspection, V8, Auto, Excellent Body #7,900



4 Wheel Drive Chassis 92 Ford F-350 7.3 Diesel, Auto, A/C, 11,000 GVW, 4:10 Axle, 20,000 Miles



Super Cab 91 Ford F-250 XLT Lariat Heavy Duty, 8800 GVW, 361 i.l., Auto, A/C, All Options, 27,000 Miles, Lots Of Truck Only \$14,900



Diesel Dually 92 Ford F350 XLT Lariat A Beauty 7.3 Diesel, Auto, O/D, A/C, 4:10 Axle, Tow Pkg., Gooseneck Hitch



Canover Dump 90 GMC 13,200 GVW, 10 Ft. Body, Auto, Turbo Diesel, 46,000 Miles



Awesome Power 91 Dodge D-350 Dually LE Model, Cummins Turbo Diesel, Auto, Tow Pkg.



Cummins Diesel 89 Dodge 250 LE Pulling Power 5 Sp. O/D 8800 GVW, A/C Tow Pkg, 46,000 Miles



4x4 Stake Dump 92 Chevy 3500 X Cab Only 5,000 Miles, 464 i.l., 5 spd., A/C, 9 Ft. Body, Fold Down Gooseneck Hitch



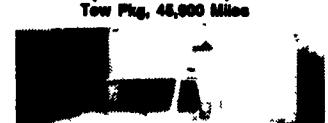
89 Ford F-450 Super Duty 36,900 Miles, Very Nice, 460 i.l., 5 Sp., O/D, 14,500 GVW, 9 Ft. Body



Diesel 4 Wheel Drive 89 GMC 2500 SLE Sierra, 6.2 Auto, A/C, Drives Like A Dream, Tow Pkg., 51,000 Miles



Diesel 4 Wheel Drive 89 Ford F-350 Heavy 8800 GVW, 7.3 Diesel, 5 Spd., 4:10 Axle, 22,000 Original Miles



Diesel Cube Van, 91 Ford E-350 7.3 Diesel, Auto, Roll Up Door, New Inspection



A Beauty 90 Ford F-350 Super Cab Dually Strong 7.3 Diesel, Auto, O/D, A/C, Chrome Wheels, Custom Paint, Drives Like A Dream, 28,000 Miles



Utility Body 88 Ford F-350 They Don't Come Any Nicer, 28,000 Miles, 460 i.l., Auto, 9 Ft. Body



F-250 Diesel 90 Ford F-250 XLT Heavy 8800 GVW, 7.3 Diesel, AT, A/C, Limited Slip Axle, 24,300 Miles



Diesel Crew Cab 4x4 82 GMC 6.2 Diesel, 4 Spd. \$3,500



Diesel Pulling Power, 89 Ford XL Super Cab Dually 7.3 Diesel, 5 Spd., Tow Pkg., 4:10 Axle, 17,400 Miles



Farmers Flatbed 72 Chevy 360, 4 Spd., 12 Ft. Body, New Inspection



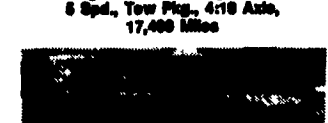
4 Door Diesel 92 Ford F-350 XLT Lariat 7.3 6 Speed, A/C, Very Strong, Ready To Pull



4 Wheel Drive, 90 Ford F-350 XLT Lariat, Black Finish, 961, Auto, A/C, Limited Slip 4:10 42,000 Miles



14 Ft. Box 89 Ford Super Duty Big 14,800 GVW, it Will Haul A Load, 5 Spd., A/C, 48,000 Miles \$12,900



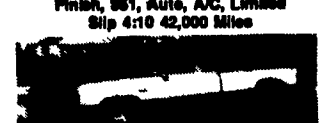
Diesel 15 Passenger 86 Ford E-350 Diesel Power, Auto, Frt. & Rear Heater & A/C, 54,000 Original Miles, Real Clean



4 Wheel Drive Chassis, 90 Ford F-350 11,000 GVW, Short 137 WB, 460 V8, Auto, Dual Tanks, Also 86 In Stock



Aluminum Box 12 Ft. Storage Area Swing Open Doors, Inside Tie Downs



Rare Find 92 Dodge Super Cab Dually Awesome Cummins Turbo Diesel Intercooler, 5 Sp O/D, Captain Chairs, Limited Slip Axle, 33,000 Miles