

'89 Chevy Beauville 8 passenger van, 3/0 FI, auto, PB, PS, PW, PDL, cruise, tilt, dual air, privacy glass, red & white, 54,000 miles, excellent condition, 1 owner, \$10,500. 717-733-2873

'89 Dodge 3/4 ton pickup, beautiful black, 318, automatic, P/S, P/B, runs and looks great, \$6,900. Martin (717)859-6678.

'90 Dodge LE D150, 4x4, club cab, 318 EFI, auto, PB, PS, AM-FM, 26,000 miles, charcoal & silver, excellent condition, \$12,900. 717-733-2873

'90 Ford XL F150, 300 EFI, 5 spd., PS, PB, AM-FM cassette, dual tanks, new radials, 45,000 miles, black, excellent condition, \$8,300. 717-733-2873

INTERNATIONAL 6x6 DUMP TRUCKS

Front Winch, PS, Air Brakes, 1100/20 Tires. Continental 6 cyl. engine. LIKE NEW 600-6,000 Miles. GVWR 57,366. Excellent for off road heavy duty cargo transporting with their all wheel drive and ability to climb a maximum grade of 70 degrees. A must for every farmer. \$9,450 each.

(814) 834-1018 St. Marys, PA



1984 Ford LNT9000, 350 Cummins, 9 Sp., 3.70 Rears, Clean Trucks With Records, 2 Available.

Also 1978 Mack, Non Sleeper, w/Wet Line @

\$6,900

MOTOR TRUCK EQUIPMENT COMPANY
198 Kost Road/P.O. Box 1922
Carlisle, PA 17013-0922
(717) 766-8000

'89 Ford pickup w/lift gate, F250, \$6,100. Also 6,000 lb. tandem axle trailer, inspected and ready, \$1,500. (717)872-5007.

'89 Ford XLT Bronco, 302 EFI, auto, all options, 1 owner, black & silver, like new, \$10,900. 717-733-2873

'86 Ford Super Cab F250, Diesel Turbo Cooler, AM/FM Cass.; Dual Tanks, PB, PS, A/C, CB, Auto. XL 4X4, Tilt Steering, Power Door Locks, Trailer Towing and Goose-neck Package. Excellent Condition and Cared for. (717)766-3526.

'84 Dodge Diesel 1/2-ton 2WD. Zartman Dodge, 717/626-8551.

Chevy C30, 1985, w/11' steel flatbed, 454, AT, PS, PB, AC, good condition, \$5900; '87 Ford F350 w/12' flatbed, 480, AT, PS, PB, AC, good condition, \$10,500. 717-345-4882.

USED TRUCKS



83 Ford C-30 Chev V8 4 Spd., P/S 9 Ft. Cattle Body: **\$4250**

Other Cab & Chassis to choose.



85 GMC Diesel - 5 Spd., P/S w/with out 14 Ft. Flat Bod - NEW Tires - NEW Paint - Excellent Condition, 75,000 Miles on Truck.



79 INT'L 392 - 5 + 2 spd. 16 ft. VAN Body Dump - P/S, Nice Truck - **\$5,600.00**



75 INT'L 1950 Diesel 5/2 spd., P/S, 39,000 GVW, 3000 Gal. Alum. Fuel Oil Tank - 5 Other Fuel Trucks



72 JEEP 4x4 7 Ft. Power Angle Snow Plow Inspected, 66 DODGE 1 ton 4x4 9 Ft. Stake Bed, 8 Ft. Power Angle Snow Plow - Nice Truck, Inspected.



DRY & REEFER VAN BODIES FOR OVER THE ROAD OR STORAGE STARTING AT **\$250.00** and up.

USED TRUCKS OF ALL TYPES - DRY & REEFER BODIES
NEW & USED DUMP BODIES - USED TRUCK PARTS AND
MOTOR (WE BUY, SELL & TRADE)

MARTIN'S USED TRUCKS & EQUIPMENT INC.

560 Lampeter Road, Lancaster, PA 17602

(717) 392-6266, Rob Martin Jr. (717) 299-6200

Financing Available



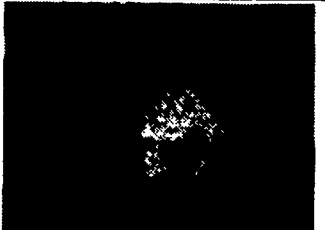
1985 INTERNATIONAL, \$2500, 350 Cummins, 9 Speed, RA472 Rears, PS, AC, One Owner, New Paint, Very Clean **\$14,900**



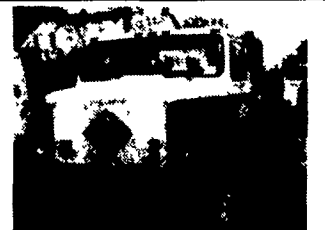
10' DUMP BODY, 28" Sides, 38" Ends, Half Cab Shield, 5/16" Floor, Coal Chute **\$1,250**



(3) 1984-1985, GMC BRIG. SA, TT, 6V92T Silver, 9 Speed, 23K Rears on Spokes, PS, Your Choice \$7,500 ea.



1984 WHITE, SA, TT, 290 Cummins, RT11609, R170 Rear, 22.5 Radials On Spokes, PS, Good Runner **\$7,500**



1980 INTERNATIONAL 2275, SA, TT, 6-71 Detroit, RT1110 Trans., 23,000 Rear, PS, 22.5 Radials, Cheap Horse **\$6,900**



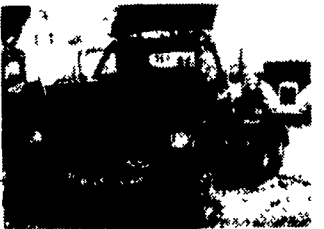
1979 INTERNATIONAL \$2275 TT 6V92T Silver, 9 Speed, RA355 Rears, PS, New Paint, Good Value **\$7,900**



1986 FREIGHTLINER TT 3406B, 350 HP, RT12609, DS381, PS, 22.5 Low Profiles, Runs Well **\$7,900**



1987 INTERNATIONAL S1954 w/24' Morgan Van, DT466, 5 Speed, 22.5 Radials on Budds, Power Steering, New Paint, 28,000 GVW, Good Value At **\$8,900**



1984 GMC BRIG TT, 6V92T Silver, 9 Speed, SQ100 Rears, PS, 22.5 Radials, Great Runner, Some Cab Rust **\$5,900**



1979 INTERNATIONAL TT, 290 BC Cummins, 9 Speed, 38 Rears on 4 Spring, 22.5 Radials, PS, Lots of Miles Left **\$4,900**



(17) USED VAN BODIES From 11' to 24', Some Insulated, Priced From \$300 to \$1500



1986 GMC GENERAL TT, 400BC Cummins, RT014613, SQ100 Rears, 36" Sleeper, PS, Good Value At **\$13,900**

NEW DIESELS!



1994 F-450 Super Duty Chassis Cab, Quigley 4x4 Conversion, XL, 7.3L Diesel, 5 Spd. Manual w/OD, 5.13 Regular Rear Axle, Dark Blue w/Royal Blue Interior Stock #5945.



Coming In Quigley 4x4 Conversion 1994 F-350 Crew Cab 7.3L Turbo Diesel, Elec. 4 Spd. Auto, 4.10 Limited Slip Rear Axle, Camper Package, A/C, Speed Control, Tilt Steering Wheel, Power Door Locks/Windows, Red w/Gray Interior Stock #7819.



1993 F-350 4x2 Utility Truck, 5.8L EFI, V8, Elec. 4 Spd., Auto, 3.55 Regular Axle, 133 Inch Wheelbase, Super Engine Cooling, HD Battery, Bright Red w/Dk. Charcoal Interior. Stock #3275.



1994 F-350 SC 4x2, 7.3L Turbo Diesel, Elec. 4 Spd., Auto, XLT, 4.10 Limited Slip Rear Axle, Camper Package, Speed Control, Tilt Steering Wheel, Power Doors, Power Locks, Tucson Bronze w/Mocha Interior Stock #4520.



1994 F-450 SD Chassis Cab, 4x2, XL, 7.3L Diesel V8, 5 Spd., w/OD, 5.13 Rear Axle, 137 Inch WB, Red w/Grey, Vinyl Interior Stock #7838



1994 F-350 4x4 Chassis Cab, 7.3L Turbo Diesel, 5 Spd., Manual O/D, 137 Inch WB, 4.10 Limited Slip Rear Axle, Manual Locking Hubs, Dk Blue With Blue Interior. Stock #0905.

OUR LOWEST

"NO HASSLE PRICE"

IS MARKED ON EVERY VEHICLE. EVERY DAY. PERIOD

TRY US!
717 949 2000



RD 7, Box 405
Lebanon, PA
17042

FIRESTONE MOTORS, INC.

330 S. THIRD ST. • LEMOYNE, PA 17043 • (717) 763-7721