

# Business News

## Klines Host Dairy Open House

ELVERSON (Berks Co.) — Ease of milking and speed of handling extra cows were some of the reasons that Lynn and William Kline invested in an extensive array of improvements and additions to their 200-head grade Hol-

stein dairy farm recently. The Klines recently invited farmers to tour their new facilities as part of an Open House celebration to feature the new buildings and equipment.



The Kline dairy purchased a new Alfa-Laval Agri double-6 herringbone parlor.



Various companies involved in the renovations at the Kline dairy were on hand to answer questions at the open house recently.

The Klines installed a new milking center, which includes a new milking parlor. The center is a 39-foot by 39-foot Lester pre-engineered building with Glasbord walls, put in place by Valley View Construction, Inc. in Morgantown. In the new Milking Center is a new Alfa-Laval Agri double-6 herringbone parlor with Blue Diamond suspended stalls with indexing rail. The milking system includes plate cooler, take-offs, and milk meters, by Alva-Laval Agri, and installed by J.B. Zimmerman. A Dari-Kool 2,000-gallon capacity stainless steel milk tank was installed by Lancaster Dairy Farm Automation, Lititz.

The freestall barn has slatted floors and measures 48 feet by 133 feet. It contains an 8-foot deep manure pit and a 24-foot by

40-foot holding area. Lapp's Barn Equipment, Gap, installed the gates, headlocks, freestalls, cow mats, and curtains. Keystone Concrete installed the waffle slats.

Groffdale Concrete Walls installed the poured walls for the manure pit.

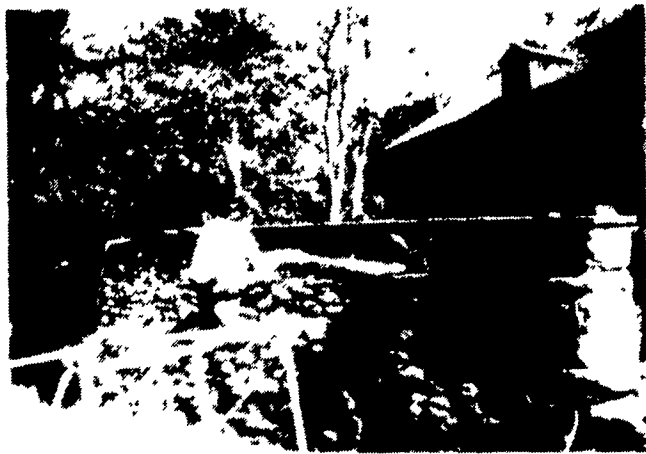
Star Silo, Myerstown, also put up a 24-foot by 96-foot poured concrete silo. Other renovations were also made.

Construction of the new additions began in March and much of the operation in August this year.

The Kline farm has about 102 milking cows, grade Holstein, with about 98 replacement stock. Milking average on the herd totals about 19,000 pounds. All cows are milked through the new parlor.

A dinner was provided for those who attended the open house.

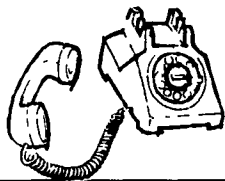
### PRESSURE POINTING



This Is THE ANSWER For A Structurally Sound Wall

- Stronger Than Repointing Methods
- Longer Life Span
- Fast & Economical Installation

So Please Give Us A



WE CAN STRENGTHEN ANY WALL

- Stone Wall Repairs
- Dam, Reservoir & Spillway Repair
- Installation & Maintenance of Concrete Bunker Silos
- Slatted Floor Systems
- PreCast Gunite Lined Water or Manure Storage Tanks
- Silo Repairs

We're The "Concrete Specialists"

**MAR-ALLEN CONCRETE PRODUCTS, INC.**



Gunite Construction • Precast Concrete Products  
Bridge Repair • Tank Repair • Holding Tanks • Installation • Pre-Qualified by PennDot

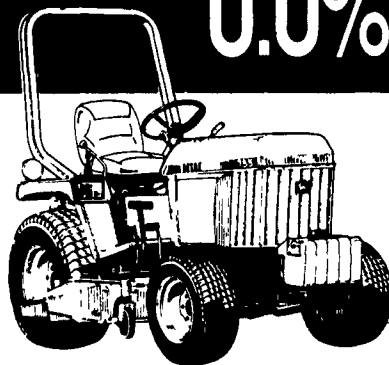
20 Cocallco Creek Rd.  
Ephrata, PA 17522  
(717) 859-4921

Two Convenient Locations!

P.O. Box 337  
Ebensburg, PA 15931  
(814) 472-8690  
Ask For Mike

Subsidiary of Seal-Crete Corp.

## NOW EQUIPPED WITH 0.0% APR FINANCING.



NOTHING RUNS LIKE A DEERE®



### COMPACT INTEREST RATES ON COMPACT TRACTORS.

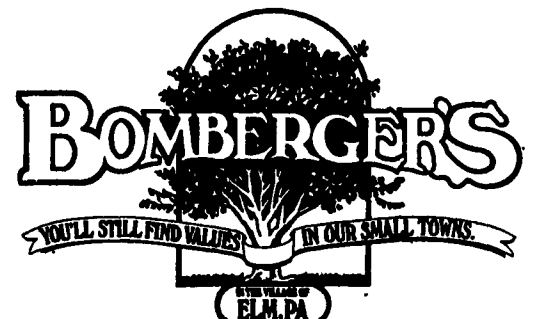
Get the performance of a new John Deere 755 Compact Tractor at a compact financing rate from John Deere Credit.

- 20 horsepower, 3 cylinder engine, 15 PTO hp.
- Hydrostatic transmission with dual pedal control.
- Fast, on-the-spot financing with low monthly payments.

### BOMBERGER'S, YOUR DIESEL HEADQUARTERS.

- We have 855's and 955's in stock.
- ALSO, we have a 5400 4wd with A6 tires and a 540 loader.

FIXED RATE FINANCING TERM	RATE
9 months	0 0% APR
24 months	4 75% APR
36 months	6 75% APR
48 months	7 75% APR
60 months	8 75% APR
72 months	9 75% APR



665 W. Newport Rd., Elm, PA 17521  
(717) 664-4663

MON.-FRI. 8:00 AM - 9:00 PM; SAT. 8:00 AM - 5:00 PM; CLOSED SUNDAY