

Greencastle Livestock

Greencastle, Pa.
Report Supplied by Auction
November 29, 1993

SLAUGHTER CATTLE RECEIPTS: 367 HEAD. SLAUGHTER STEERS 88 HEAD, 1.00 HIGHER.

HIGH CHOICE AND PRIME 2-4, 73.00-75.00; CHOICE 2-3 950-1075 LBS. 68.00-72.50; CHOICE 2-3 1075-1375 LBS. 69.00-73.00; CHOICE 2-3 OVER 1375 LBS. 65.00-69.75; CHOICE 4 ALL WEIGHTS 62.00-67.25; SELECT & CHOICE 1-2 950-1100 LBS. 64.00-69.50; SELECT & CHOICE 1-2 1100-1375 LBS. 64.00-69.00; SELECT & CHOICE 1-2 OVER 1375 LBS. 62.00-67.50.

HOLSTEINS: CHOICE 2-3 1050-1450 LBS. 60.00-63.00; SELECT 1-2 1050-1450 LBS. 54.00-59.00.

SLAUGHTER HEIFERS: 45 HD, MARKET 1.00 HIGHER. CHOICE 2-3 850-1000 LBS. 68.00-73.00; CHOICE 2-3 1000-1250 LBS. 70.00-73.75; CHOICE 4, ALL WEIGHTS 62.00-66.00; SELECT & CHOICE 1-2 850-1000 LBS. 63.00-68.50; SELECT AND CHOICE 1-2, 1000-1250 LBS. 60.00-64.75.

HOLSTEINS: CHOICE 2-3 1000-1350 LBS. 57.00-62.00; SELECT & CHOICE 1-2 1000-1350 LBS. 50.00-56.00.

SLAUGHTER BULLS: 16 HD. MARKET STEADY TO STRONG. YIELD GRADE 1 ALL WEIGHTS 60.00-68.50; YIELD GRADE 2 ALL WEIGHTS 54.00-59.50.

BULLOCKS: 3 HEAD. CHOICE 1-3 950-1150 LBS. NONE; 1150-1375 LBS. 61.50-63.75; SELECT 1-2 950-1250 LBS., NONE.

COWS: 215 HD. TREND: STRONGER; GOOD DEMAND. BREAKING UTILITY & COMMERCIAL 44.00-50.00; CUTTER & BONING UTILITY 43.00-49.50; CANNER & LOW CUTTER 43.00 & DOWN.

STOCKER & FEEDER CATTLE RECEIPTS: 116 HD., STEADY, GOOD DEMAND. BEEF TYPES: 200-400 LBS. STEERS 80.00-102.00, BULLS 78.00-100.00, HEIFERS 74.00-95.50; 400-600 LBS. STEERS 75.00-91.00, BULLS 65.00-74.00, HEIFERS 70.00-89.00; 600-800 LBS. STEERS 70.00-81.00, BULLS 60.00-67.00, HEIFERS 69.00-77.00; 800-975 LBS. STEERS 66.00-73.50, BULLS 55.00-61.00; HEIFERS, 62.00-68.00.

HOLSTEIN AND DAIRY CROSS: 200-400 LB. STEERS 70.00-78.00,

BULLS 60.00-70.00, HEIFERS, NONE; 400-600 LB. STEERS 60.00-69.00, BULLS 50.00-59.00, HEIFERS, NONE; 600-800 LB. STEERS 55.00-59.50, BULLS, NONE, HEIFERS, NONE; 800-975 LB. STEERS 48.00-56.00, BULLS 45.00-52.00, HEIFERS, NONE.

CALVES: 629 HD. VEAL CALVES. TREND: STEADY. CHOICE 150-300 LBS. 85.00-101.00; GOOD 150-300 LBS. 75.00-90.00; GOOD 100-150 LBS. 65.00-80.00; GOOD 80-100 LBS. 55.00-70.00; STANDARD 80-100 LBS. 50.00-60.00; STANDARD 80 LBS. & DOWN 50.00 AND DOWN.

CALVES RETURNING TO THE FARM, TREND STEADY TO STRONGER. HOLSTEIN BULLS OVER 100 LBS. UP TO 164.00; UNDER 100 LBS. UP TO 160.00; HOLSTEIN HEIFERS OVER 100 LBS. UP TO 190.00; UNDER 100 LBS. UP TO 180.00; BEEF TYPE BULLS OVER 90 LBS. UP TO 175.00; BEEF TYPE BULLS UNDER 90 LBS. 155.00.

SHEEP & LAMBS: 88 HD. LAMBS: TREND: 2.00 HIGHER. CHOICE 80-100 LBS. 60.00-68.00; 100-120 LBS. 61.00-65.00; 120 LBS. AND OVER 53.00-57.00; MEDIUM AND GOOD ALL WEIGHTS 63.00-70.00; LIGHT LAMBS 70.00-90.00.

SHEEP: EWES LEAN 30.00-40.00; EWES FAT 15.00-25.00; BUCKS 19.00-25.00.

GOATS: 101 HD., SMALL 24.00-35.00; MEDIUM 36.00-59.00; LARGE 60.00-90.00.

HOGS, SOWS & BOARS: 161 HEAD, 1.00 LOWER. HOGS, BARROWS & GILTS: 210-250 LBS. 39.00-41.00; 250-260 LBS. 39.00-40.00; 260-270 LBS. 38.00-40.00; 270-300 LBS. 35.00-40.00. LIGHT HOGS: 140-180 LBS. 30.00-34.00; 180-210 LBS. 33.00-36.50.

SOWS: 2.00 LOWER. GOOD SOWS UNDER 400 LBS. 30.00-36.00; GOOD SOWS UNDER 400 LBS. 31.00-36.50; CULL SOWS ALL WEIGHTS 30.00 AND DOWN.

BOARS: TREND 1.00 LOWER. 180-210 LBS. 29.00-32.00; 210-260 LBS. 30.00-32.00; 260-300 LBS. 26.00-29.00; 300 LBS. AND OVER 26.00-28.00.

SALE EVERY MONDAY AT 2:00 P.M. & EVERY THURSDAY AT 1:00 P.M.

HAY & STRAW SALE EVERY MONDAY & THURSDAY AT 11:30 A.M.

SPECIAL FEEDER PIG SALE: SATURDAY, DECEMBER 18, AT 1:00 P.M.

SPECIAL FEEDER CATTLE SALE FRIDAY, DECEMBER 3, 7:15 P.M.

Four States Livestock

Hagerstown, Md.
December 1, 1993

Report supplied by Auction

SLAUGHTER COWS: 133 HEAD, 1.00-2.00 LOWER. UTILITY 43.00-48.00; HIGH DRESSING TO 49.50; CANNERS 39.00-43.00; SHELLY 39.00 DOWN.

BULLS: 11 HEAD, PRICES STEADY. YG#1 1200-1400 LBS. 62.00-67.75; YG#2 1300-1900 LBS. 53.00-57.00.

FED STEERS: GOOD RUN. HIGH CHOICE 1150-1450 LBS. 71.00-72.50; 1000-1150 LBS. 68.00-70.00; FEW 1500-1700 LBS. 63.00-67.00; LOW CHOICE 1000-1200 LBS. 66.00-69.50; SELECT 60.00-66.00.

FED HEIFERS: HIGH CHOICE 1000-1150 LBS. 69.00-71.50; CHOICE 3&4 1100-1300 LBS. 66.00-68.25; LOW CHOICE 62.00-67.00; SELECT HOLSTEINS 1200-1400 LBS. 52.00-55.00.

VEAL CALVES: CHOICE 1 260 LB. AT 89.00; CULLS 85-110 LBS. 52.00-60.00; 50-80 LBS. 45.00-55.00; WEAK/ROUGH 45.00 DOWN.

FARM CALVES: HOLSTEIN BULLS #1 90-120 LBS. 130.00-155.00; 80-85 LBS. 75.00-100.00; FEW 125-135 LBS. 100.00-128.00; HOLSTEIN HEIFERS #1 90-120 LBS. 150.00-180.00; 75-85 LBS. 90.00-160.00; BEEF X BULLS AND

HEIFERS 95-120 LBS. 110.00-140.00. BUTCHER HOGS: 30 HEAD. US#1&3 215-260 LBS. 38.00-39.25; #2&3 36.00-37.50; 270-300 LBS. 36.00-39.00. STOCK CATTLE: 177 HEAD. STEERS MEDIUM AND LARGE FRAME 200-400 LBS. 75.00-96.00; 400-600 LBS. 72.00-83.00; 600-800 LBS. 70.00-75.00; 800-1000 LBS. 63.00-71.00. HEIFERS: 300-500 LBS. 70.00-81.00; 500-700 LBS. 64.00-76.00; 700-800 LBS. 60.00-67.00.

BULLS: 200-400 LBS. 77.00-92.00; 400-500 LBS. 75.00-88.00; 500-700 LBS. 64.00-72.00, FEW TO 77.00.

DAIRY REPLACEMENTS: GOOD DEMAND. FANCY SPRINGERS AND FRESH 1000.00-1185.00; MEDIUM 600.00-850.00; SMALL 500.00-600.00; HOLSTEIN HEIFERS BY THE POUND 200-300 LBS. TO 92.00; 400-700 LBS. 65.00-77.00; 700-800 LBS. 70.00-81.00.

SHEEP: 20.00-30.00. LAMBS: 45 HEAD. HIGH CHOICE 90-110 LBS. 69.00-76.00; 80-90 LBS. 75.00-78.00; 60-80 LBS. 75.00-85.00; 1 LOT 125 LBS. 58.50.

GOATS: MEDIUM 35.00-55.00; SMALL 25.00-40.00.

PIGS AND SHOATS: 12 HEAD. BY THE HEAD FROM TESTED HERDS 40-50 LBS. TO 32.00; 50-60 LBS. TO 43.00.

SOWS: 10 HEAD 300-450 LBS. 30.00-32.00; 450-700 LBS. 31.00-33.00.

BOARS: NONE. SELLING NEXT WED., DEC. 8-15 MOSTLY ANGUS STEERS AND HEIFERS 400-500 LBS., WEANED, WORMED VACCINATED.

FOUR STATES LUNCH ROOM BUSINESS AVAIL. AFTER MANY YEARS MARLIN AND EVA MARTIN HAVE DECIDED TO GIVE UP THE LUNCH ROOM AT FOUR STATES. THEY HAVE BUILT UP A LARGE FOLLOWING OF REPEAT CUSTOMERS OVER THE YEARS WITH THEIR FIND FOODS AND WILL BE MISSED. ANYONE INTERESTED IN TAKING OVER THE WED. LUNCH ROOM SHOULD CONTACT FOUR STATES 301-733-8120.

Lebanon Valley Livestock Auction

Fredericksburg, Pa.
Tuesday, November 30, 1993

Report Supplied by PDA

SALE NOT REPORTED NOVEMBER 30, 1993; BUT HEADAGE IS AS FOLLOWS: CATTLE 159; CALVES 180; HOGS 92; FEEDER PIGS 0; SHEEP 1; GOATS 81.

Silo-Matic with TUMBLE MIX ROTATION



- Beam Scale System
- 7 Different Sizes
- Low Maintenance
- Long-Lasting Stainless Steel Barrel
- Low Power Requirements

Economical!!

MODEL	PRICE
DM172.....	\$6,700
DM235.....	\$7,528
DM320.....	\$8,592

PRICES WITH BEAM SCALE, LESS MOTOR

FICKES SILO COMPANY, INC.

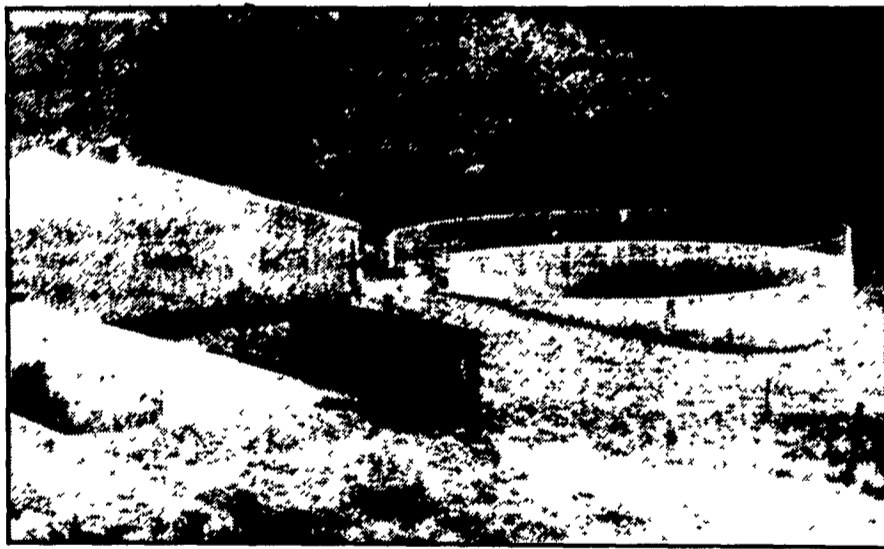
Manufacturers & Builders



NEWVILLE, PENNSYLVANIA 17241
717 776-3129 • 1-800-224-SILO



• Agricultural • Commercial • Residential



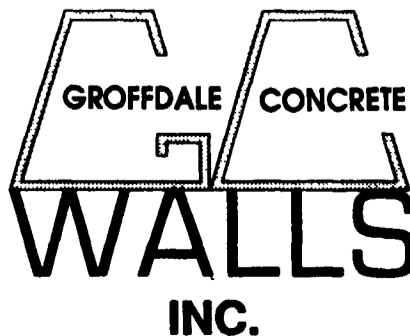
Partial In-Ground Tank Featuring Commercial Chain Link Fence (5' High - SCS Approved)

- Retaining Walls • Bunker Silos
- Manure Storage, Etc.

LET OUR EXPERIENCE WORK FOR YOU-ESTABLISHED SINCE 1979!
WE ORIGINATED THE CONCRETE SYSTEM!

Sizes And Layouts To Your Specifications

We Work Hard For Customer Satisfaction!



430 Concrete Ave., Leola, PA
717-656-2016

Authorized Dealer For KEYSTONE CONCRETE PRODUCTS

- H-Bunks
- J-Bunks
- Trench Silo Walls
- Hog & Cattle Slat

Purina Mills



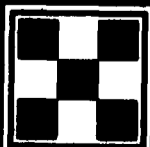
Are You A Current Pork Producer
OR
A Future Pork Producer
And

Want Your Income To Reflect
Your Performance

THEN: Ask About Our Alternative

"Hog Contracts"

1-800-873-5300



Purina Mills, Inc.

Leaner pork for leaner people.