

Morrison Cove Livestock

Martinsburg, Pa.
November 29, 1993

Report supplied by auction

CATTLE 172. STEERS CHOICE 71.50-73.85; GOOD 69.50-71.25. HEIFERS: CHOICE 71.00-73.25; GOOD 68.00-70.75. COWS: UTILITY & COMMERCIAL 43.50-50.00; CANNER & LOW CUTTER 37.50-43.00. BULLOCKS: NO MARKET TEST. BULLS: YIELD GRADE NO. 1 58.50-64.00. FEEDER CATTLE: STEERS 67.00-79.00; BULLS 58.00-77.00; HEIFERS 45.00-69.00. CALVES 211. PRIME, NO MKT. TEST; CHOICE 93.00-101.00; GOOD 80.00-92.00; STANDARD 35.00-70.00. HOLSTEIN BULLS 90-130 LBS. 120.00-150.00; HOLSTEIN HEIFERS 90-130 LBS. 120.00-175.00. HOGS: 89. US NO. 1-2 39.50-41.00; US NO. 1-3 37.00-39.25. SOWS: US NO. 1-3 30.00-33.75. BOARS: 26.50-31.00. FEEDER PIGS: 7 HEAD. US#1&3 20-50 LBS. NO MARKET TEST. SHEEP: 12 HEAD. CHOICE LAMBS

NO MARKET TEST; GOOD LAMBS 57.00-66.00; SLAUGHTER EWES 18.00-25.00. GOATS: 7.00-59.00. 16 LOADS OF HAY. ALFALFA 65.00-82.00; TIMOTHY 67.00-85.00; 2 LOADS OF STRAW 91.00-97.00.

Belleville Livestock Auction

Belleville, Pa.

Wednesday, December 1, 1993

Report Supplied by PDA

CATTLE 91.. Supplied by the auction. STEERS: one Select at 61.50. COWS: Breaking Utility and Commercial 46.50-49.75, Cutter and Boning Utility 44.75-47.50, Canner and low Cutter 40.00-44.50. Shells down to 36.00. BULLS: one Yield Grade No. 2 55.10. CALVES 106..VEALERS: Standard and Good 60/80 lbs. 60.00-71.00, Utility 40/60 lbs. 50.00-58.00. FARM CALVES: No. 1 Holstein bulls 95/105 lbs. 145.00-167.50.00, No. 2 105/115 lbs. 122.50-147.50; No. 1 Holstein heifers 95/105 lbs. 175.00-190.00. HOGS 73..BARROWS AND GILTS: US 1-2 230/260 lbs. 40.50-41.75, US No. 1-3 210/270 lbs. 38.00-40.25. SOWS: US No. 1-3 300/500 lbs. 29.00-32.00, 500 lbs

and up 31.00-34.00, US No. 2-3 300/500 lbs. 27.25-28.75. FEEDER PIGS 116...US No. 1-3 15/25 lbs. 18.00-24.00, 25/35 lbs. 22.00-31.00. --- all per head. SHEEP 39..Choice 60/80 lbs. Woolled sl. lambs 70.00-90.00, 30/50 lbs. 90.00-105.00, one 35 lbs. 150.00. Slaughter sheep: 28.00-43.00. GOATS 13..Large 40.00-65.00, Medium 30.00-38.50, Small 25.00-32.50, Large Kids 20.00-30.00.-- per head.

Indiana Livestock

Homer City, PA

Thursday, Dec. 2, 1993

Report supplied by Auction

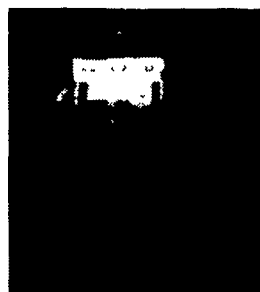
BEEF: HEIFERS' GOOD 70.00, MEDIUM 65.00-68.75; COMMON 61.00-64.00. STEERS: GOOD 73.00, MEDIUM 68.00-72.50, COMMON 64.50-67.50. COWS: GOOD 52.00, MEDIUM 46.00-49.50, COMMON 44.00-DOWN. BULLS: BUTCHER 62.00, BOLOGNA 58.00-61.00. FEEDERS: GOOD 550 LBS. STEERS 75.00, MEDIUM 70.00-74.00, COMMON 69.00-DOWN.



CALVES: 85-115 LBS. (BULLS) 120.00-155.00, 85-115 LBS. (HFRS.) 165.00, 80 LBS. UNDER 60.00 DOWN, 120 LBS. OVER VEAL 240 LBS. 119.00-105.00. LAMBS: COMMON 50.00. HOGS: NO. 1 200-240 LBS. 38.00-41.70, NO. 2 140-195 LBS. 36.00, 245 LBS. 38.00-39.50. SOWS: 32.00-37.50. BOARS: 25.00. GOATS: 31.00 PER HEAD.

Promise/Attainer

Plant them for the Performance



For maximum feed value from your alfalfa crop, it's hard to beat the performance of Promise or Attainer.

Promise was one of only two alfalfa varieties to produce 6 T/A yields in Cornell trials. And its two-year average of 8.49 T/A in Penn State trials was tops among 49 varieties.

Attainer is unmatched in milk production per acre. It produced 16,200 lbs. of milk/acre in 1992 field trials.

Find out how you can improve your forage program using Promise or Attainer. Talk to your local Hoffman Seeds sales representative.

Or call: **1-800-776-7929**

Promise

- ◆ Produced 1,800 lbs./A yield advantage in its third production year compared to check varieties in N.Y. state trials.
- ◆ Produced a 3-year yield advantage of 2.5 T/A in Penn State trials when compared to the mean.
- ◆ Exceptional persistence even under intensive cutting management for maximum forage production.
- ◆ High resistance to all alfalfa diseases common to the Northeast.
- ◆ Stand durations from 4-5 years minimize your reseeding expenses.

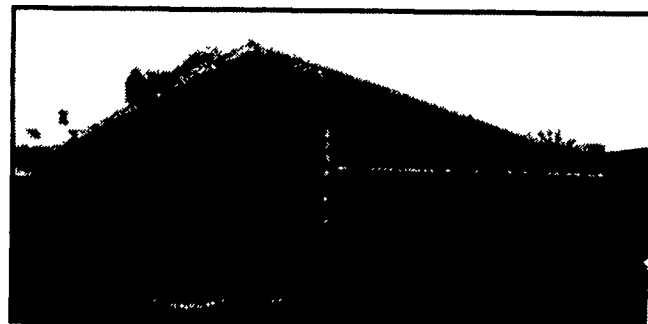
Attainer

- ◆ Produced 16,200 lbs. of milk/acre in 1992 field trials.
- ◆ Highly resistant to all alfalfa diseases.
- ◆ Unmatched stem quality, plus an increase in leaf-to-stem ratio for greater protein content
- ◆ Larger harvest window than most alfalfas for improved field management.



Ciba Seeds

Hoffman Seeds, Inc.
Landisville, PA 17538
Call toll free: 1-800-776-7929
Adding Value To Your Seed Investment



**26'x100'
VIRGINIA STYLE
HEIFER BARN
Winter Sale Now In
Effect
CALL FOR DETAILS**

Shelter For Your Livestock Investment

When livestock is your livelihood, you want the safety and security of a Lester wood frame building.

Choose from our wide range of Uni-Frame® livestock facilities in standard and custom designs. Each constructed from only top quality materials.

Engineered to withstand extreme weather. Supported by the nation's leading building company. And backed by the industry's leading warranty. Visit your local Lester dealer or call 1-800-826-4439 today. From chickens to cows to hogs, Lester has it covered.

VALLEY VIEW CONSTRUCTION, INC.

2622 Valley View Road MORGANTOWN, PA 19543
CALL (215) 286-5407 OR (215) 445-8317

© 1992 Butler Manufacturing Company

THE BRAND THAT MAKES THE DIFFERENCE.



LESTER BUILDING SYSTEMS
A Division of Butler Manufacturing Company

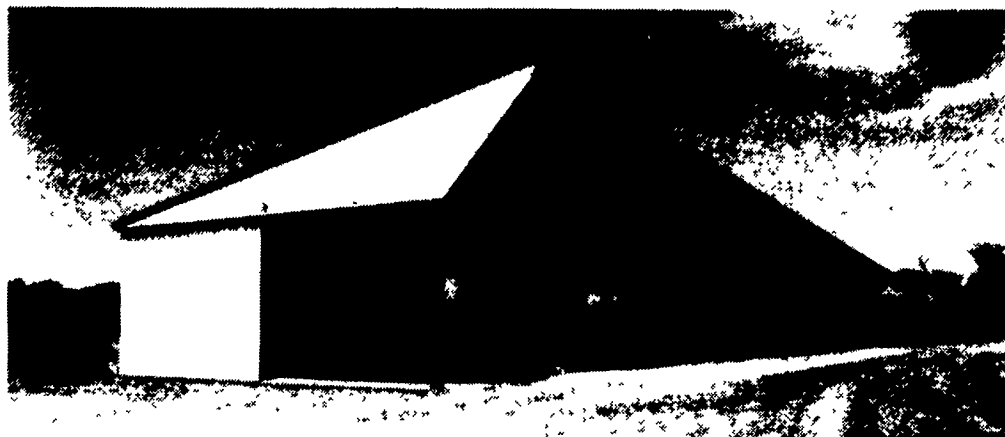
**PRECISE
CONCRETE WALLS, INC.**

**For All
Your Concrete
Walls And
Construction
Needs**

Agriculture - Residential - Commercial

- Buildings • Basement • Floors
- Retaining Walls • Footer
- SCS Approved Manure Storage Pits
- All Types Of Flat Work

Manure Storage



Virginia Style Heifer Barn With 8' Deep, 180' Long, 12' Wide Slatted SCS Approved Concrete Manure Pit

Invest In Concrete, Quality Work That Will Last A Lifetime

CALL FOR **FREE** ESTIMATES
AND SEE HOW AFFORDABLE
CONCRETE WALLS CAN BE

**CONTACT
STEVE PETERSHEIM
717-355-0726**

**PRECISE CONCRETE
WALLS, INC.**

601 Overly Grove Road, New Holland, PA 17557