

**"FREE CATALOG"  
CALL OR WRITE**

DIRECTIONS TO OUR MIDDLETOWN STORE- On your road map, we are on Route 230 mid way between Middletown & Elizabethtown. Take the Toll House Rd. exit off Rt. 283, turn and go to stop at Rt. 230, go east on 230 1-1/2 mi. on the right.



DEPARTMENT L F  
4294 EAST HARRISBURG PIKE  
MIDDLETOWN, PA 17057

HOURS: Mon.-Fri. 9-8  
Saturday 9-2  
Sunday - Closed  
(717) 944-0318

**"RESTORED & REPRODUCTION"  
OLD GAS PUMPS AND PARTS**



Great For The Den Or Garage,  
Very Colorful, Guaranteed  
Conversation Piece, Short  
Ones - Tall Ones, We Even  
Have One Turned Into An  
Authentic Slot Machine!  
Also - Globes, Signs & Parts To  
Restore Your Own, Call And  
Ask For  
Pump Catalog

We Buy Old Pumps  
& Other  
Gas Station  
Relics!!!!

**AIR COMPRESSORS  
& MORE IN OUR  
CATALOG**

5 H.P. VERTI-  
CAL ASME  
CODED TANKS,  
2-STAGE  
PUMPS, CAST  
IRON CYLS,  
INDUSTRIAL  
MODELS  
w/MAG  
STARTER IF  
REQ.



LOW  
AS \$899.00  
ALSO 7 1/2 H.P. AVAILABLE



PRESSURE POT BLASTERS - 125 Lb. Capacity  
\$250, 325 Lb. \$400  
BLAST CABINETS - 4' Wide Unit With All The  
Goodies \$699, 3' Wide Unit w/Options Available  
\$399, Closeout On Mini Table Top Unit TH Gone.

**SMITH FARM  
EQUIPMENT**  
30 Acker Rd.  
Newport, Pa.  
Perry County  
717-567-3562

Lancaster Farming, Saturday, December 4, 1993-D31

Farmall 504G  
IH 574 del. w/loader  
IH 686 ROPE  
IH 756 D WFE 3 pt.  
IH 886 D cab  
IH 986 Fender  
885 D, cab & air  
886 Gas WFE  
Ford 8N  
JD 4230 w/cab & air  
Oliver 1755 D WFE cab  
IH 37 Baler  
IH 430 Baler & Thrower  
NH 851 Round Baler  
NH 770 Harvester  
Gleaner M2 Combine  
5100 Drill w/Press  
Wheels  
IH 510 Drill  
NH 304 Spreader,  
Like New  
Woods 208 Mower  
JD 316 w/Mower  
Gossen 3 Pt. Balc  
Chopper  
IH #50 Shredder

**NEW EQUIPMENT SALE**



5 1/2' 3 pt. heavy duty disc \$975 Sale \$600  
6 1/2' 3 pt. heavy duty disc \$1075 Sale \$675  
Millcreek 45 sq.ft. manure  
spreader, PTO drive \$1795 Sale \$1400

THE ABOVE ITEMS WILL BE REDUCED UNTIL SOLD

Special Winter prices on new Long 3 pt rotary tillers

63" \$1425 FOB • 55" \$950 FOB

While They Last!

IH hydro 70, 4400 hours, excellent  
condition, like new tires all around,  
weights & 1 remote .....\$9,500  
IH model 140, late model, very good  
condition 12 volt w/like new Woods  
belly mower, turf tires .....\$4,500  
New LONG 2084 disc mower, 7', 3 pt.....  
.....\$3,975 no trade price  
New LONG model 2074 pull type hay  
tedders .....Winter discount price \$1,500

J & M TRACTOR 410-756-4036  
Feeser Road • Taneytown, MD

WE CARRY NEW & USED EQUIPMENT

**Performance Sale!**

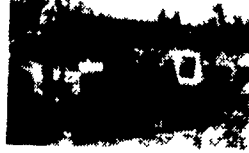


(717) 428-1517 or 717/741-1797  
Fax No: (717) 428-2990  
RR 2 Box 314A, Kreddler Rd.  
York, PA 17403  
(Exit 3 Off Interstate 83)

**Douglas  
EQUIPMENT & SUPPLY CO.**

Many Places Not Listed!  
If You Don't See It -  
Give Us A Call!

THINK  
SNOW



SNOW PLOW TRACTORS  
IH 2400A, Gas, Power Angle  
Plow, Cab, Heater \$3,550  
1989 Kubota L2550, 938 Hrs.,  
Diesel, Cab, Heater, \$4,250  
Snow Line V4 Wisconsin Cab  
\$1,950



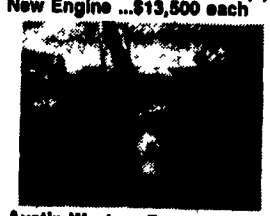
2) Ford A-42 Leader, ART FWD  
Ford Diesel, Good Cond. (1)  
New Engine ...\$13,500 each



Case 380 Tractor, 3 Pt., PTO,  
Diesel, Good Cond., cleaned &  
painted...\$4,750



Dump Trailers  
Hill, Fruehauf, Parker, 26 Ft.,  
Aluminum  
Starting At \$3,500



Austin Western Pacer 300 GM  
4-71 Diesel, Cab & Heater,  
Power Angle Snow Plow,  
\$5,500



IH 1700 Dump, 404 Gas, 5x2,  
P/S, Ready For Spreader &  
Snow Plow \$5,900



Huber Maintainers  
(2) M-600's 1 w/Cab \$7,500  
1 w/Front Blade  
(1) M82 - Front & Center  
Blade \$3,750



Davey 150 CFM Compressor,  
Ford Diesel, 1800 Hrs., Hose  
Reels ...\$3,900



Rollers  
Rubber Tire, Tandem, 3  
Wheel, Starting At \$1500

**VERSA-TILL COULTERS**

USE 1-2- OR 3 COULTERS  
HEAVY DUTY THROUGHOUT  
HEAVIER THAN YET---  
COMPARE THE COST

WE ARE THE DISTRIBUTOR  
"DEALERS WELCOME"

FRAME MOUNTED COULTER \$178.00

COUNTRY SALES & SERVICE INC.  
LOGANSPORT, IN 46947

219-753-3133

**HERNLEYS  
FARM EQUIP. INC.**

(717) 367-8867

2095 S. Market St., Elizabethtown, PA 17022



**SPECIALS**

- Agco 8630 4WD Tractor Less Than 400 Hrs., Excellent Condition
- NH TR85 Combine With 2 Heads

**NEW EQUIPMENT**

**TRACTORS**

- Agco 7600 2WD w/ROPS
- Agco Allis 9630 2WD

**HAY & FORAGE**

- Hesston 1160 Mower-Cond. 12 Ft.
- Hesston 1340 Disc Mower-Cond. 12 Ft.
- Hesston 1320 - 9 Ft. Disc Conditioner
- (2) Hesston Forage Boxes-
- Hesston 555T Round Baler
- Hesston 1130 Mower Conditioner

**TILLAGE**

- DA 1500 Min-Till, 9 Shank, Hyd. Coulters, Demo-Special Price!

**COMBINES**

- Gleaner R52, 15 FSOLD Head, 6 Row Corn Head
- 20 Ft. FSOLD, 6 Row Cornhead

**SPREADERS**

- Hesston 262 Spreader w/Hyd. Endgate

**YOUR GLEANER COMBINE SALES  
AND SERVICE DEALER**

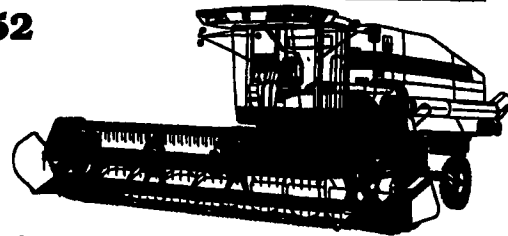
LOW RATE FINANCING  
OR WAIVER OF FINANCE INTEREST  
TILL 11-1-94

Available On All New Equipment!

**GLEANER R-52  
COMBINE  
WITH DEUTZ  
ENGINE**



SEE WHAT A QUALITY GLEANER COMBINE  
CAN DO FOR YOU IN THE FIELD.



**USED EQUIPMENT**

- AC Disc, 13 1/4 Ft.
- AC Disc, 10 Ft. Nice Condition
- Hayrack Wagon
- 2 - NH 489 Haybines
- Gleaner L2 Combine, 6 Row Corn head, 15 Ft. Flex Head
- Hesston 1180 Disc Conditioner
- AC 8010 2WD Tractor, Excellent Cond.
- Agco Allis 8630 All Wheel Drive Tractor, Low Hours
- NH 320 Baler With 70 Thrower Excellent Cond.
- Roekamp Roller Mill With 30" Roll

CALL OR SEE OUR SALESMEN:

Mel Hoffer (717) 367-7171, Glenn Binkley (717) 285-5544,  
or Duane Hernley (717) 367-8867

**AGCO ALLIS** Partners For  
Tomorrow

When You Want Service You Can Count On Us!

- Same Leopard 85, 4WD w/ cab, excellent, \$13,500
- IH 966 fresh overhaul, excellent, \$10,750
- IH 484 low hrs., \$8,500
- IH 684 low profile, \$8,500
- Ford 3600 dual remotes, \$7,700
- White FB37, like new, \$8,700
- NH 520 manure spreader, \$2,595
- Ford NH 514 manure spreader, \$2,495
- NI 212 manure spreader, \$1,650
- Gehl 95 grinder mixer, \$2,950
- JD 400 grinder mixer, \$2,750
- IH 1150 grinder mixer, \$2,195
- Brillion 7'3" cultimulcher, \$3,100
- Bearcat 10' cultimulcher, \$2,100
- IH 12' cultimulcher \$1,950
- Kverneland 4x ARS plow, \$2,500
- IH 710 5x ARS plow, \$2,500
- JD 8250 grain drill, \$2,900
- (3) IH 510 drills from \$1,500
- Disc chisel Landoll 5 shank \$3,750
- Brillion 5 shank \$3,950
- Glenco 7 shank, \$4,300
- Glenco 7 shank, \$4,100
- Noble 9 shank \$3,950
- Rhino 9 shank, \$3,500
- (3) NI 323 corn pickers, will bill

**Marshall  
Equipment  
Rt. 85**

Beyer, PA  
(412) 783-6333

Where quality is  
worth the drive.