

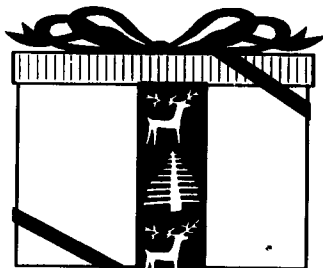
1 FARM EQUIPMENT

Scissors Lift
4'x11' Platform
Up To 25' On
Air Tires
Battery Powered
\$1,500
(410) 337-3570

COUNTRY BOY MFG.

1601 King St.
Lebanon, PA 17042
Phone (800) 584-3601

- Hog Shelters
- Pallet Racking
- Mezzanines
- Steel Supply
- Sheet, Plate, Angles, Channels



Lancaster Farming

HOLIDAY ADVERTISING SCHEDULE

MONDAY	TUESDAY	WEDNESDAY	THURSDAY	FRIDAY	SATURDAY
DEC. 20	DEC. 21	DEC. 22	DEC. 23	DEC. 24	DEC. 25
PUBLIC SALE 12 Noon ROP ADV. 5:00 PM	CLASSIFIED FARM EQUIPMENT & ETC. 5:00 PM		PRINTING AND MAILING DATE	HOME DELIVERY DATE	MERRY CHRISTMAS
DEC. 27	DEC. 28	DEC. 29	DEC. 30	DEC. 31	JAN. 1
PUBLIC SALE 12 Noon ROP ADV. 5:00 PM	CLASSIFIED FARM EQUIPMENT & ETC. 5:00 PM		PRINTING AND MAILING DATE	HOME DELIVERY DATE	HAPPY NEW YEAR
JAN. 3	JAN. 4	JAN. 5	JAN. 6	JAN. 7	JAN. 8
PUBLIC SALE 12 Noon ROP ADV. 5:00 PM	CLASSIFIED FARM EQUIPMENT & ETC. 5:00 PM		PRINTING AND MAILING DATE	HOME DELIVERY DATE	FARM SHOW OPENS

WISCONSIN ENGINES

ZIMMERMAN PORTABLE ELEVATORS



WELL BALANCED, RUGGEDLY BUILT FOR MANY YEARS OF TROUBLE FREE SERVICE
From 24 Ft. to 48 Ft. Available



MILLER'S REPAIR
1 Mile North of Bird In Hand
8 Miles East of Lancaster
Ph. 717-656-6100



Liquid Manure Pumps Portable & Stationary

USED EQUIPMENT

- NI 12A Manure Spreader.....\$1,250
- NI 206 Manure Spreader.....\$1,500
- Brillion 10' Packer/Seeder.....\$1,950
- Gehl 1200 Harvester w/3038 2 Row Head & 1000 Hay Pickup.....\$6,300
- NI 325 NR Corn Picker, 8 Roll Bed.....\$3,850
- NI 325 Corn Picker, 12 Roll Bed.....\$4,200
- NI 323 Corn Picker.....\$2,500
- Brillion 12' Transport Cultipacker.....\$1,150
- NH 489 Haybine, Nice.....\$3,950
- NH 456 Mower.....\$1,650
- Hesston 2RN Head.....\$750
- New Hesston 4550 Baler w/Hyd. Thrower (Same as IH 8520).....\$7,500
- Without Thrower.....\$6,500

Best Buys in Used Equipment

USED EQUIPMENT

- Farmall 806 diesel, WF
- IH 445 baler w/thrower
- (2) NH 489 mower conditioners
- IH 19' 3 pt. vibra shank harrow
- Brillion 16' transport harrow
- Brillion 14' single roll packer w/transport, excellent condition
- IH 435 baler w/thrower
- JD tubular hay elevator, PTO drive

IH fast hitch equipment: 3 btm. plow; 8' disc harrow; 2 row cultivator; 6' rear blade; 8' York rake
5' 3 pt. hitch rotary cutter

USED COMBINES

JD 3300 w/cab, gas, 2 row corn head & grain head

Unverferth gravity boxes in stock

BANGOR IMPLEMENT

6 Filcksville Rd., Bangor, PA 18013

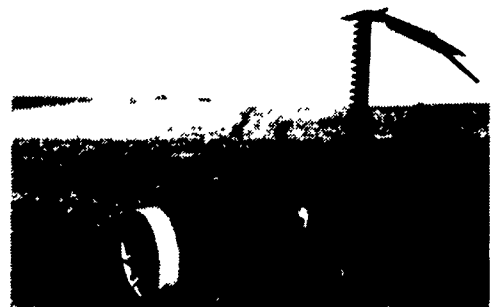
215-588-5922 or 215-588-5924



The I & J Cultivator



CULTIVATORS: 3 point or horse drawn available in 1-2-3- or 4 rows can be used as a field cultivator with a few attachments. Great for vegetables. We can custom build. Options: rolling shields, disc hlters, liquid side dressers, row tracking system.

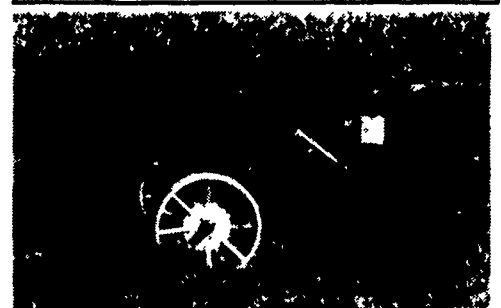


MOWERS: 3 point or trailing features: guards & blade, move back and forth cuts like a scissors, virtually no plugging.

8% OFF ALL CULTIVATORS BOUGHT UP TO 12/31/93



RAKES: available in ground drive or PTO steel wheels or rubber tires Features: forms a very fluffy windrow, can also be used as a windrow inverter. Does not rope hay. A real leaf saver.
\$3308 Thru 12/31/93



DEEP TILL SLITTER: Available in 1 or 2 shanks, optional hydraulics. On Sale Now

Corn binders: get your orders in by June 1, 1994

We Also Carry Flex Tine Harrows

I & J MANUFACTURING

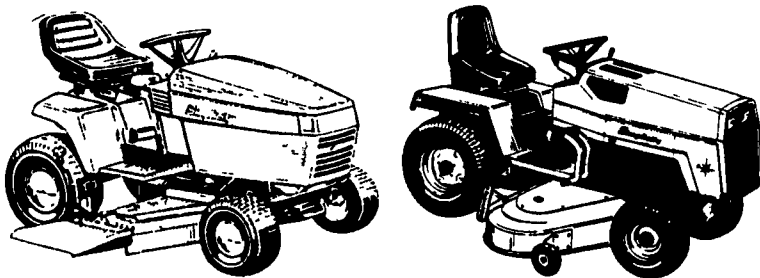
Dept. LF, 5302 Amish Road • Gap, PA 17527

717-442-9451

(Call Between 8:45-9:00 A.M. Weekday Ask For Jake)

AGCO ALLIS Simplicity

0% INTEREST
NO MONTHLY PAYMENTS TILL APRIL 1, 1994



**MOST MODELS IN STOCK
USED LAWN TRACTORS — READY TO GO**

AC 916 - AC 912 - AC 917 - AC 410 -
John Deere 300, 214, 212, 210, 110

USED TRACTORS

- AC 7060 Powershift Tractor
- IH 806, AC 160
- AC-200 Tractors
- AC XT190 Series III
- AC 7040
- AC 7040 Powershift Tractor
- AC 7050 Tractor
- AC 190XT (Good Cond.)
- IH 3444 With Loader
- Oliver 66, Good Cond.
- AC C w/Mower
- Case 311
- Case 580B Backhoe
- Deutz Allis 6275, 1200 Hr.

USED EQUIPMENT

- Used NH, Gehl, Bobcat Skid Loader
- 14 AC Baler
- H 880 2 Row Chopper
- 1 Mounted Corn Picker, Very Good Shape

GLENER COMBINES

- M Combine
- G Combine w/Corn & Grain Head
- F w/Corn & Grain Head
- Brillion 8 Ft. Seeders

**NEW & USED BOBCAT'S IN STOCK
FINANCING & LEASING AVAILABLE
SHIP PARTS DAILY UPS**

WINCO Generator w/Diesel Engine

New & Used Woods Mowers

GRUMELLI'S FARM SERVICE INC.

929 ROBERT FULTON HWY.
QUARRYVILLE, PA. 17566

717-786-7318



1.5 Mile South Of Quarryville On 222

See Salesmen: Tony Grumelli, Clarence Herr, Don Fichtner