

35 TRUCKS & TRAILERS

(2) WHITE ROAD BOSS 11 TRACTORS

(1) '78
w/430 h.p.
Detroit, 9
speed, wet
line, A/C



(1) '79
w/290
Cummins,
9 speed,
wet line

Both mechanically and appearance-wise in good condition, no rust. \$5,900 ea.

717-545-7956 after 7:00 p.m.



1987 Ford F-150
Supercab, F.I. 6 Cyl., 4 Speed With
Overdrive, PS, PB, AM/FM, Dual
Tanks, Full Rear Seat, 6 1/2' Bed
\$5,300

Countryside Auto Sales
Manheim, PA
717-664-2170 Office
717-865-3488 Home



1990 Chev G30 Ext. Cargo PS, PB,
AT, FI 350, 8600 GVW, 59,000
Miles, 41,000 Miles On Engine,
Extra Clean Stk #1644.



1990 Chevy P30 Grumman 18' Step
Van, Dual Wheel, 350, PS, PB, AT,
Radial Tires, 10,000 GVW, 79,000
Miles. Stk #1620.



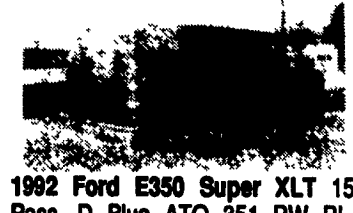
1991 Ford E350 Super Medtec
Ambulance Conversion, 7.3 Diesel,
ATO, AC, 35,000 Miles, Call For
Details Stk #1575



1990 GMC 5000 (Isuzu NRR) 6.5
Diesel, Allison Trans., Radial Tires,
PS, PB, 138" CA, 18,000 GVW,
70,000 Miles, Will Receive 16' or 18'
Body. Stk. #1648.



1993 Navistar 4700 DTA 360, All-
ison AT, Air Brakes, 11xR22.5,
31,000 GVW, 26' Waco Moving
Van, Double Curb Doors, Left Side
Door, Rear Barn Doors, Like New,
13,000 Miles. Stk #1659.



1992 Ford E350 Super XLT 15
Pass., D. Blue, ATO, 351, PW, PL,
Tilt, Cruise, Dual AC & Heat, 39,000
Miles. Stk. #1610.



1992 Ford E250 XLT 4 Captains &
Sofa, ATO, 460, PW, PL, Tilt,
Cruise, Privacy Glass, Dual AC,
Dual Heat, Excellent For Towing,
14,000 Miles. Stk #1710.

**Four Way
Auto Sales**
770 West Main St.,
New Holland, PA 17557
717-354-3199



AUTO BODY & SALES
1701 E Division Hwy
New Holland PA • 717-355-0611

Specializing in Rebuilt Collision Damage Vehicles



'89 CHEVY SILVERADO
LONG BOX
350, AT, PS, PB, AC, T.H.
cruise, cass., 37,000 Mi.,
Needs left 3/4 front & left
hand bed side repair
\$4,650



'89 FORD F250
5.8 FI Auto., PS, PB,
64,000 Mi., Light Front
Damage, Bed Rough,
8600 GVW
\$2,850



'91 FORD RANGER XLT
LONGBED
2.3 FI, 5 Spd., Cass,
58,000 Min., Very Light roll,
runs & drives, only needs
bumper, w/s & body work
\$3,800



'91 CHEVY S-10
TAHOE LONGBOX
2.8 V-6, 5 Spd., Cass,
27,000 Mi., took pole on
left side w/ parts
\$3,300

END OF YEAR CLEARANCE AT HOSTETTLERS

Trucks and Truck Equipment

- 8' & 9' Truck Flatbeds for Single and Dual Wheel Trucks, with or without Gooseneck Compartments, Includes Bulkhead and Rear Light Skirt..... Starting at \$595
- Complete Hoists Packages: Hoist, Rear Pivot, Pump, Hoses Hardware and Control Cable
- RL-C20 for Body 8'-12' Long 7 Ton....\$1,180
- RL-D40 for Body 12'-14' Long
- 10 Ton\$1,487
- KH1520L for Body 14'-16' Long,
- 14 Ton\$1,723
- RL-G70 for Body 16'-18' Long,
- 19 Ton\$2,387
- 12' Knapheide Pacesetter X Platform 3/16" Smooth Steel Floor, 40" Removable Grain Sides.....\$1,965
- 14' Knapheide Value Master X Platform with Treated Wood Floor, 40" Removable Grain Sides.....\$2,095
- 16' Knapheide Value Master X Platform with Treated Wood Floor, 40" Removable Grain Sides.....\$2,275
- 18' Scott Steel Silage Body with 60" Sides and Hydraulic Operated Tailgate, Assembled and Painted.....\$6,350
- 16' Hewey Aluminum Grain Body, 48" Permanent Sides and Dump Thru Tailgate.....\$4,995
- 1977 Jeep With New 8' Treated Wood Bed with Removable Sides.....\$1,495
- 1986 Chevy 3/4 Ton Pick Up, 350 Gas, 4 Speed, Cadet Flatbed Set-up for Pulling Gooseneck and Bumper Pull Trailers.....\$3,995
- 1985 Chevy 3/4 Ton Pick Up, 305 Gas, Automatic, with Rust Free Fiberglass Service Body (Like Penn Dot is Now Using).....\$4,495
- 1985 Dodge One Ton, 360 Gas, Auto, AC, 12' Stake Body, Only 43,000 Miles....\$5,695
- 1974 Ford F750, V8 Gas., 5 & 2 Speed, Air Brakes, 27,500# GVW, Runs and Looks Good, Wheel Base for 16' or 18' Body.....\$2,500
- 1977 IHC, V8 Gas, 4 Speed, 21000# GVW, Good Clean Truck, with 14' Flat Bed.....\$1,950
- 1977 IHC Cab & Chassis, V8 Gas, 5 & 2 Speed, 26,500 GVW, Low Miles, Wheel Base for 16' or 18' Body.....\$2,900
- 1977 GMC with 14' Flat Bed Dump, V8 Gas, 5 Speed, 20,000# GVW, Just Finished.....\$3,650
- 1983 IHC, 404 Gas, 5 & 2 Speed, 20' Roll Back Bed, Reduced.....\$6,650
- 1978 GMC Tandem, Cab & Chassis, V8 Gas, 5 & 2 Speed, 40,000# GVW, Air Brakes, Long Frame for 16' or 18' Farm Body Dump.....\$5,950
- NEW Knapheide 9' Western Storage Body, Ultra Low Profile Design for Pulling Gooseneck Trailers, Recessed Tail Lights, Rear Step Bumper, 2 Toolboxes Each Side.....\$2,000
- Truck Craft 8' Toolbox Dump Body, Fits Single Wheel Full Size Pick, Has 2 8' Toolboxes One Each Side with Dump Body Between, Electric Hydraulic Hoist..... Only \$2,195

Trailers

- Used 5'x17' Bumper Pull Horse/Livestock Combo, Solid Overall Condition..... Special \$695
- Used 2 Horse Shoop Bumper Pull, Walk Thru, Rear Ramp, New Floor and Inspected.....\$2,250
- Used 2 Horse Gore Gooseneck, Tack & Manger, Strange Looking But You Will Never Get More Trailer For The Money.....\$1,750
- New 6'x16' Kiefer Bullt Express Livestock Bumper Pull, Treated Yellow Pine Floor, Divider Gate.....\$3,295
- Special New 6'x12' Moritz Horse Combo, 7' Inside Height, Removable Breast Bar, Treated Floor, Full Swing Rear with Half Slider, With Rubber Mats.....\$3,295
- New 6'x16' Kiefer Renegade Bumper Pull Livestock Trailer, Fiberglass Roof, Treated Floor, Radial Tires, 6'10" High, Divider Gate, A True Deluxe Trailer.....\$4,295
- New Leftover Feather Lite 4 Horse Gooseneck Aluminum Trailer, Sep. Tack and Dressing Room, Drastically Reduced to..... \$17,500
- 16' Grian Dump Trailer, 40" Sides, Double Acting Tailgate, Fitted Tarp.....\$9,500
- New 6'x12' Pace American Enclosed Cargo Trailer, Double Rear Doors, 36" Side Door.....\$2,550
- 16' 2 Axle Utility Trailers with Wire Mesh Ramp Gate, 7000# GVW.....\$1,695
- 18' 2 Axle Utility, 10,000# GVW, Electric Brakes, Adjustable Coupler, Adjustable Ramps.....\$2,450
- New 6'x16' Moritz Bumper Pull Livestock Trailer, Treated Pine Floor, 7' Inside Height, Charcoal in Color.....\$3,595
- **SPECIAL** 6' Wide x 7' High x 16' Long Moritz Gooseneck, Two Slat Sides, Two 8' Compartments, EZ 4 Horse Trailer....\$3,995
- ** SPECIAL** 7' Wide x 7' High x 16' Long, Moritz Gooseneck, Great For Large Dairy Cattle, Red.....\$4,295
- New Kiefer Bullt 6'x16' Renegade Gooseneck 2 Horse Trailer, 6' Dressing Room, Fiberglass Roof, Call for More Info...\$6,295
- New 6'x12' Hostetler Utility Trailers with Stake Pockets (No Side Rail) 3000# GVW, Split Mesh Rear Ramp Gate.....\$1,295
- NOTE-Also Available Without Gate
- NEW Hostetler Single Axle Utility Trailer, Designed to Accept your Standard Pickup Cap, 5 1/2' Wide x 8' Long With 18" High Solid Sides, 3000# GVW, with 15" Wheels and Tire.....\$1,165



**Hostetler Truck
Bodies & Trailers**
Rt. 322 Milroy, PA 17063
(717) 667-3921

OVER 60 YEARS IN BUSINESS!

WOLF MOTOR CO.

ROUTES 72 & 283, LANCASTER, PA 17601



**CENTRAL PA'S
FORD TRUCK DEALER**



Sales Reps. Bill Martensen Gary Brenneman
Dennis Asel, Mgr.

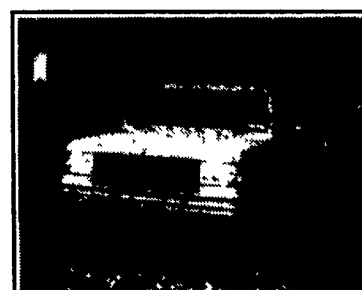
717-299-4331 Toll Free 800-637-6612



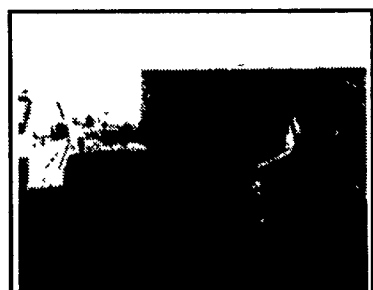
**Large
Selection Of
Diesel
Turbos
In Stock**



'91 CHEVY
3500
350 V8, AT, Supreme Reefer
Body
\$16,900



'87 FORD F-250
9 Ft. Flat Bed With Tow Package,
300-6 Cyl., Auto
\$5,495



'94 F350 4x4
7.3 Liter Diesel, 5 Speed, 8 Ft.
Dump Body



'87 FORD
F-700
370 V8, 5/2 Trans., 26,500 GVW,
102 CA
\$7,800



**Large Selection
F Model Cabs &
Chassis**
26,000-33,000 GVW