

Liquid Waste Hauler



1974 AUTOCAR with
5,000 gal. pressure vac. tank 350 CFM
walley vac pump 8" load valve
Mfg. 10-93. 18-Fr. 44R. Cummins
power, super clean truck for year
\$26,500 Or Reasonable Offer
(717) 626-9050



PICKUP INSERT DUMPER
For FREE brochure, call toll free 24 hr.
1-800-755-3867

'89 Ford F250 HD, 1/2 ton,
4x4, 400 EFI, auto, PB, PS,
AM-FM, dual tanks, towing
package, 8,600 GVW,
35,000 original 1 owner
miles, excellent condition,
\$11,985. 717-733-2873

'89 Ford pickup w/ift gate,
F250, \$8,100. Also 8,000
lb. tandem axle trailer, in-
spected and ready, \$1,500.
(717)872-5007.

'90 Dodge LE D150, 4x4,
club cab, 318 EFI, auto,
PB, PS, AM-FM, 26,000
miles, charcoal & silver,
excellent condition,
\$12,900. 717-733-2873

'90 Ford XL F150, 300 EFI,
5 spd., PS, PB, AM-FM
cassette, dual tanks, new
radials, 45,000 miles,
black, excellent condition,
\$8,300. 717-733-2873

'84 Dodge Diesel 1/2-ton
2WD. Zartman Dodge,
717/828-8551.

Chevy C30, 1985, w/11'
steel flatbed, 454, AT, PS,
PB, AC, good condition,
\$5900; '87 Ford F350 w/12'
flatbed, 460, AT, PS, PB,
AC, good condition,
\$10,500. 717-345-4882.

Diesel Engines: Detroit,
318, 16V71, 12V71, 671,
V-853, 6V92, 8.2; Chev.
diesel 6.2. Other engines
and truck parts. Reason-
able prices. Call after 6PM,
(215)944-9871.

DUMP TRUCK, 1979 Ford
F-900, 33000 GVW, gas
engine, air brakes, 5-speed
w/2 speed rear, \$3900.
717-354-5815.

FOR SALE: 1989 Ford
truck owned by several
NASCAR greats still titled
to one of NASCAR's best.
Call Tim (703)874-5332 af-
ter 5PM.

Ford 1960 24' Henderson
Roll Off, Need Work. BO
BucksCo. (215)968-4808.

1986 Ford F-250
6 Cyl., 4 Speed, PS, PB, AM/FM
Cass., Dual Tanks, Dark Blue Finish
\$4,995
Countryside Auto Sales
Manheim, PA
717-664-2170 Office
717-865-3488 Home

ARMY TRUCK PARTS

CHAMBERSBURG, PA

SERVING THE NORTHEAST OVER 40 YEARS

THE NATION'S LARGEST ARMY
TRUCK and PARTS DEALER

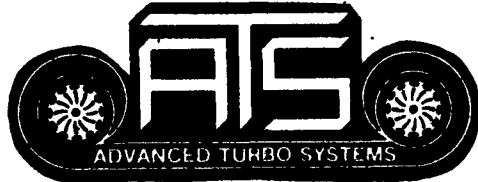
Request Our Free Army Truck Parts Catalog

MEMPHIS EQUIPMENT

821 Lincoln Way West
P.O. Box M
Chambersburg, PA 17201

717/263-4194 FAX 717/263-4555

ART WELLER, GEN. MGR.
MARK SIPES, PARTS MGR.

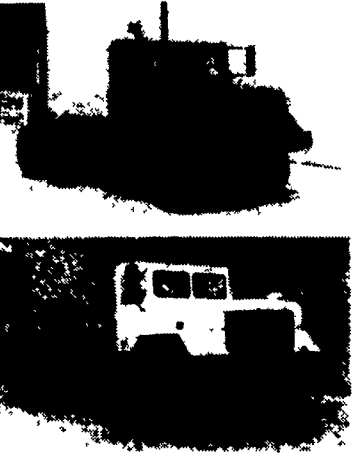


Have Your 6.2, 6.9 & 7.3 Diesel Engine
Turboized Before The Busy Season
Call Us & Ask About The New
Wastegated Turbo For The 7.3 Engine

PARKVIEW GARAGE, INC.
AMERICAN & FOREIGN DIESEL SPECIALIST
A.T.S. TURBO SYSTEMS

39 PARKVIEW HGTS. RD. EPHRATA, PA 17522
P.O. Box 246 Ph. (717) 733-9691

Poor Performance and Workmanship
Go Along w/Cheaper Prices.

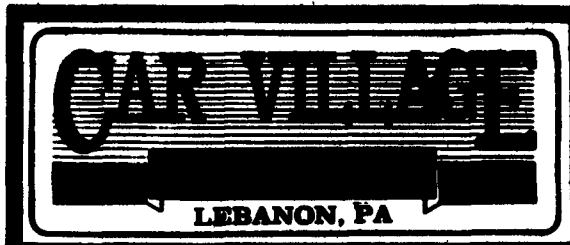


GMC - REO - 5 TON
DODGE 1/2 TON
KAISER - JEEP 1 1/2 TON
ALL 6x6 & 4x4

ENGINES
TRANSMISSIONS
TRANSFER CASES
DRIVE TRAIN
CAB KITS

RTE. 422,
WEST
LEBANON, PA

(Across From Lebanon
Valley Mall)



717-274-2000

FAX

717-274-2717

Business Hours
Mon-Thurs 9-9
Fri & Sat 9-4

Nicest
Pre Owned
Trucks
Anywhere!

THIS IS JUST A SMALL PORTION OF OUR HUGE INVENTORY



Intercooled Dodge Cummins
91 Dodge LE A Beauty, 29,000
Miles, Auto, A/C, Tilt, Cruise,
Clean As They Come



4 Wheel Drive Chassis
92 Ford F-250 7.3 Diesel,
Auto, A/C, 11,000 GVW, 4:10 Axle,
29,000 Miles



12 Foot Box, 90 Ford F-Super
Duty Big 14,500 GVW, Roll
Up Rear Door, 1 Piece Fiberglass
Box, 480 I.L., Auto



Diesel Dually 92 Ford F350
XLT Lariat A Beauty 7.3 Diesel,
Auto, O/D, A/C, 4:10 Axle, Tow Pkg.,
Gooseneck Hitch



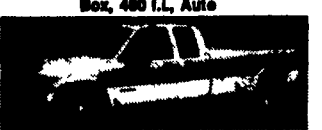
Canover Dump 90 GMC
13,200 GVW, 10 Ft. Body,
Auto, Turb Diesel, 46,000 Miles



Aweome Power 91 Dodge D-350
Dually LE Model, Cummins Turb
Diesel, Auto, Tow Pkg.



Cummins Diesel 88 Dodge
250 LE Pulling Power
8 Sp. O/D 8800 GVW, A/C
Tow Pkg, 45,000 Miles



Turbo Diesel Dually, 92 Chevy
3500 Super Cab Perfect,
Diesel 5 Spd., O/D, AM Options,
Silverado, Custom Paint,
Everything You Like



89 Ford F-450 Super
Duty 35,300 Miles, Very Nice,
480 I.L., 5 Sp., O/D, 14,500 GVW,
8 Ft. Body



Diesel 4 Wheel Drive 89 GMC
2500 SLE Sierra, 6.2 Auto, A/C,
Drive Like A Dream, Tow Pkg., 51,000
Miles



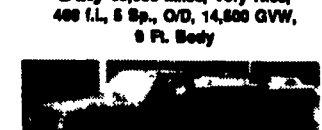
Diesel 4 Wheel Drive
88 Ford F-250 Heavy 8800 GVW,
7.3 Diesel, 5 Spd., 4:10 Axle, 22,000
Original Miles



Diesel Cube Van, 91 Ford
E-350 7.3 Diesel, Auto,
Roll Up Door, Now Inspection



4x4 Dump Tk, 88 Ford F-350
Rare Find, 480 I.L., 5 sp.
O/D, 22,000 Miles



Utility Body 88 Ford F-350
They Don't Come Any Nicer, 28,000
Miles, 480 I.L., Auto, 8 Ft. Body



F-250 Diesel 90 Ford F-250
XLT Heavy 8800 GVW, 7.3
Diesel, AT, A/C, Limited Slip
Axle, 24,300 Miles



Haul It - Dump It
88 Ford F-350 Dump Truck
480 I.L., 5 sp., O/D, 22,500,
Beck Pack Utilities



Diesel 4 Door Dually
90 Ford F-250 XLT Lariat
Clean As They Come, 7.3 Auto, A/C,
Low Miles, Ready To Tow



Farmers Flatbed
73 Chevy 350, 4 Spd.,
12 Ft. Body, Now Inspection



4 Door Diesel 92 Ford F-350 XLT
Lariat 7.3, 5 Speed, AC,
Very Strong, Ready To Pull



4 Wheel Drive, 90 Ford
F-250 XLT Lariat, Black
Finish, 351, Auto, A/C, Limited
Slip 4:10 42,000 Miles



Custom Hauler
90 Ford F-350 Super Cab Dually
Diesel, Auto, A/C, 39,800 Miles,
4:10 Axle



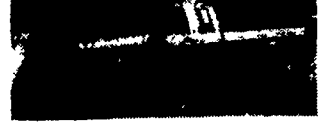
4x4 Dodge Cummins,
91 Dodge 250 Intercooled
Cummins, 5 Spd., A/D, A/C,
29,800 Miles, Tow Pkg.



4 Wheel Drive Chassis, 90 Ford
F-350 11,000 GVW,
Short 157 WB, 480 V8, Auto,
Dual Tanks, Also 88 In Stock



Aluminum Box
12 Ft., Storage Attic, Swing Open
Doors, Inside Tie Downs



91 Ford F-250 Super Cab
Low Mileage Beauty, 27,000 Miles,
351 F.I., Auto, A/C, 8800 GVW,
Dual Tanks