

# Producers Should Make Community-Wide Effort To Vaccinate Against Pseudorabies

(Continued from Page A1) through the air, all producers must because "there isn't much you can start. Also, because some believe that the virus can be spread work together at one time in a countywide vaccination program do if your neighbors don't want to cooperate in this," he said. "You

may not be able to keep yourself clean."

Two or three years ago, "if somebody would have asked me about (pseudorabies), I would have said, it's a political disease, just live with it," said Dave Heckel, Farm Crest Feeds. But Heckel said the success that his company's grower-finishing herds have had with the gene-deleted vaccine has proven that the problem can be cleaned up.

Heckel spoke on a producer panel with Ray Martin, a hog producer from Voganville.

Both herd managers spoke about their problems after testing pseudorabies virus (PRV)-positive in the past. Martin discovered that, after testing his herd in 1987, he was informed that 96 out of 100 hogs were positive. He began using vaccine — which had an immediate and dramatic effect on reducing the virus. By October 20 this year, he said, out of 60 animals tested, only one was positive — and that he blames on ear tag con-

fusion with a sow that was injected with an old vaccine.

Martin injects the pigs four times per year, at about 75 cents a dose, for a total of \$3 per sow.

Heckel manages three herds in the Lititz-Manheim area of the county. Farm Crest Feeds operates small contract operations in an area that was a "hot location" for PRV spread. In 1990, a 700-sow unit tested positive for pseudorabies and was placed under quarantine. In the years following, they depopulated twice, but the "finisher flow" operation didn't stop the disease.

But Farm Crest decided to "repopulate" rather than depopulate, and cleaned off the finishing floor and began vaccinating all pigs right off the truck. A recent test of 40 hogs showed only two or three positive for the virus, because of stringent biosecurity and use of a vaccine that proved "without a doubt" to stop the spread.

(Turn to Page A36)

## PENNSYLVANIA PSEUDORABIES VACCINATION PROJECT PARTICIPATION AGREEMENT

I, \_\_\_\_\_ agree to participate in the Pennsylvania Pseudorabies

(Name)

Vaccination Project. By agreeing to participate, I accept the conditions below:

1. Vaccinate my all my feeder pigs against pseudorabies for a period of 6 months according to the schedule prescribed by my veterinarian.
2. Apply identifying ear tags to 20% of my pigs for a period of 6 months.
3. On the recording sheets provided, record the ear tag count, color, and removal date as tagged pigs are removed from the premises.

I understand that in return for accepting the above conditions, I will be provided with the following:

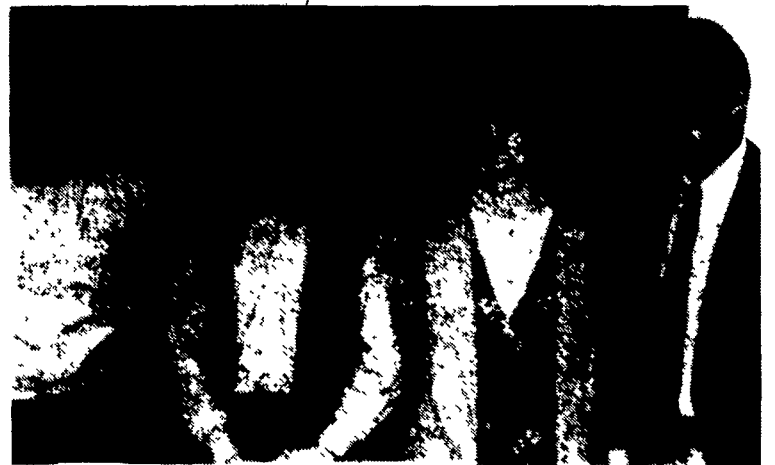
1. Half of the needed doses of pseudorabies vaccine at no cost.
2. All of the needed ear tags.
3. A summary of my pigs' growth performance.

Signed:

Date

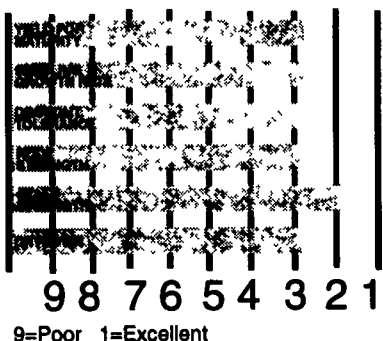
Please return this form to:

Dr. Paul M. Pitcher  
USDA-APHIS, VS  
2301 N. Cameron St. Room 412  
Harrisburg, PA 17110



## Companion Hybrids. For A Better Shot At A Bigger Yield.

Spread your risk and avoid a hurry-up harvest  
with this team of top-yielding corn hybrids from DEKALB

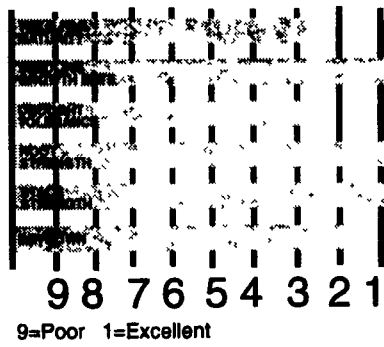


9=Poor 1=Excellent

(EXP 258)  
Excellent plant health provides consistent yields.

**Key traits:** Produces consistent yields under a wide range of conditions. Excellent stalk strength with excellent late-season plant integrity and very good drydown. Very good seedling emergence. Flexible usage for grain or silage.

**Management tips:** Good choice for tough conditions where good stalk, plant health are required. Fast seedling emergence and growth allow planting under variable tillage practices, including no-till or minimum tillage. Adaptable for medium to high populations. Flowers early for its maturity to help avoid mid-season heat stress.

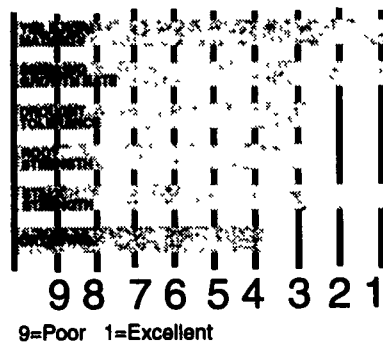


9=Poor 1=Excellent

(EXP 261)  
Superior plant health, emergence and standability. Plant this one early.

**Key traits:** Excellent seedling vigor and emergence. Super stalk strength and staygreen with excellent late-season plant integrity. Very good yields and grain quality with relatively thin and loose husk cover at harvest for excellent drydown.

**Management tips:** Plant early; excellent choice for no-till or minimum-till situations. Superior standability allows flexible harvest schedules. Superior plant health for full-season areas. Tough hybrid adapted to a wide range of soil types.



9=Poor 1=Excellent

(EXP 266b)  
New for Eastern Corn Belt! Excellent choice for no-till.

**Key traits:** Excellent seedling growth rate, stalk strength and staygreen. Produces consistent yields across a wide range of environmental conditions. Good choice for no-till. Plant for grain or silage. Excellent resistance to Southern Corn Leaf Blight.

**Management tips:** Plant at medium to high populations. Adapts to a wide range of tillage practices — an excellent choice for no-till. Exhibits strong performance across all soil types. Adaptable to all crop rotations. Good choice for grain or silage.

Producers can sign up for cost-share money to eradicate pseudorabies, according to Dr. Paul Pitcher, APHIS veterinarian, far right. Those speaking at the Tuesday night meeting included, from left, Abe Fisher, president of the Pennsylvania Pork Producers Council; Dr. Bill Sischo, Penn State veterinarian; Dr. Amy Nesselrodt, APHIS veterinarian; and Pitcher.

### FOR SALE AIR COMPRESSORS

Quincy Model 5120,  
2 stage, 25 HP,  
Completely Rebuilt  
**\$2800.00**

Quincy Model 350,  
2 stage, 10 HP,  
Rebuilt  
**\$1665.00**

Quincy Model 340,  
2 stage, 7 1/2 HP,  
Rebuilt  
**\$1095.00**

Ingersoll-Rand Type 30  
2 stage, 3 HP, Rebuilt  
**\$365.00**

Rebuilt Quincy 3 &  
5 HP Single stage and  
2 1/2 & 5 HP 2 Stage  
compressor in stock  
"We install Compressors"  
For Service Call  
Blevins (717) 529-6458

**STAUFFER  
PUMP WORKS**  
501 Coopers Drive  
Kirkwood, PA 17536  
Samuel S. King, owner

Earning Our Way  
On More Of Your Acres.

Contact your local DEKALB  
Representative For More Information

