

Milk Pricing Seminar To Highlight MMI Meeting

STRONGSVILLE, Ohio — Roller coaster milk prices and discussions about the current marketing picture for milk and dairy products, plus a guest speaker from Holland and samplings of end-uses for milk will greet the delegates of Milk Marketing Inc. at their annual meeting Dec. 8 at the Fawcett Center, Columbus, Ohio. The meeting begins at 10 a.m.

Under the theme "Two-Way Talk" MMI's Executive Vice President and CEO Don Schriver and Chairman of the Board Herman Brubaker will report to the delegates on the recent marketing scenarios facing producers in MMI's eight state area.

"We're interested in feedback from the membership, so we're putting the invitation to participate right out front," said Schriver. "This has not been an easy year for dairy producers. I can't think of a better time for some positive, face-to-face talks." The annual meeting, as in previous years, will conclude with a delegate question-answer session with MMI's senior staff.

MMI's marketing personnel will offer a mini-milk marketing seminar to delegates designed to answer marketing questions spe-

cific to the four federal orders in which MMI markets. The 30-minute breakout session will include information on Multiple Component Pricing, the new system to pay producers on the components of their milk, including protein.

An international guest from DMV International, representing DMV USA, MMI's partner in their international alliance, will speak on the possibilities of global marketing. DMV International, based in Veghel, Holland, develops, produces and markets food.

The annual meeting will also feature display areas where MMI members can visit booths to learn more about the marketing of their milk and the operations of their cooperative. A food court — featuring dairy products — will surround the display area where delegates can sample a variety of dairy products.

With the new activities and seminar, the start of the annual meeting has been moved forward to 10 a.m. The Communication Fair and registration opens at 9 a.m. The Fawcett Center for Tomorrow is located just north of The Ohio State Stadium, 2400 Olentangy River Road, Columbus, Ohio.

Seipt Named Outstanding Alumnus

UNIVERSITY PARK (Centre Co.) — Donald V. Seipt has been recognized as an Outstanding Alumnus by Penn State's College of Agricultural Sciences. A 1950 graduate in dairy science, Seipt is known internationally as an authority in dairy herd management and dairy cattle judging.

Seipt accepted the award at a reception and dinner at the Nittany Lion Inn at University Park earlier this month. Seipt also met with Dairy and Animal Science students and faculty in classroom settings and presented several lectures. He challenged members of the Dairy Science Club to be aggressive in their learning and become involved in activities beyond the classroom. He told them, "What you learn will be helpful in many areas of life, not just in the dairy industry."

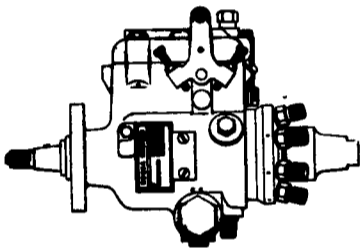
Seipt is a Pennsylvania Master Farmer and has received many awards, including the Pennsylvania Dairymen's Association Cow-an Award for dairy leadership, the Holstein Association Progressive Breeder Registry Award for the past 35 years, and the Penn State Dairy Science Club Distinguished Alumnus Award, to name a few.

The Donald Seipt family has developed one of the nation's outstanding dairy herds, having bred over 60 cows that were classified as Excellent and over 150 cows that produced in excess of 100,000 pounds of lifetime milk. Seipt and his wife Gerry own and operate a 90-cow dairy farm in Easton, Pennsylvania. Mrs. Seipt is also a Penn State graduate.



Donald V. Seipt visited the University Park Campus in early November to receive the Outstanding Alumnus award from Penn State's College of Agricultural Sciences. Shown here (left to right) are Paul Shellenberger, professor of dairy science; Seipt and wife Gerry; and Larry Muller, professor of dairy science.

PROBLEMS WITH LOW SULFUR FUEL?



FREE
60 Gallon
Stanadyne
Fuel Treatment
with each
Injection pump
serviced.



SPECIAL OFFER FOR FIRST TIME CUSTOMERS

If You Can't Deal With Your Dealer, Deal With Fay Diesel

\$35.00 OFF INJECTION PUMPS

Free Test Of Injectors With Every
Injector Pump Brought In

WE PAY UPS SHIPPING

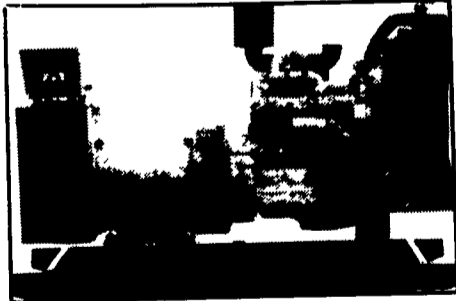
CALL TOLL FREE 1-800-864-7723

FAY DIESEL SPECIALISTS

Parts & Service • 15 Years Experience

808 East Main Street, New Holland, PA 17557 717-354-2016

GENERATORS



AUTOMATIC and
MANUAL SYSTEMS

DIESEL
L.P. GAS
NAT. GAS
NEW & USED



LEROY SOMER
PTO ALTERNATORS

BRUSHLESS
INDUSTRIAL GRADE
11 to 60 KW

READY FOR THE NEXT STORM?

For Sales and Service Call The People Who Know Generators

MARTIN ELECTRIC PLANTS

280 Pleasant Valley Rd., Ephrata, PA 17522-8620

Tel: 717-733-7968 Fax: 717-733-1981

TOOL SALE

Direct from Factory to Our Door Saves You

up to **40%** on Tools

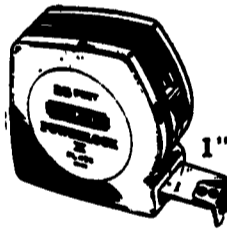
Famous Name Brands

Lufkin, Plumb

Stanley, Irwin

Disston, Wiss

S.K. Exact and etc.



1" Wide Blade



Special 10% OFF And A **FREE Mug**
For Anyone Buying \$150.00 Or More From
December 4th 'Til Christmas

Extra Special 15% OFF

For Anyone Buying \$250.00 You Actually
BUY BELOW Dealers Cost!

You Also Receive A **FREE Mug**
Flashlight or Paper Clip

Sale Runs Dec. 4 'til Christmas

Discount applies to Peerless batteries, toys, games, tools,
cookware, wagons and all gifts.

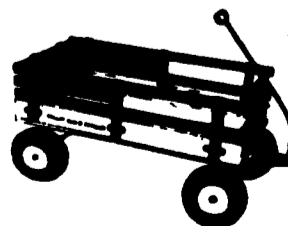
Also This Year - High Tensile Fence
Is Included In This Special

SPECIAL - Victoria
Strainers \$29.95

We Have A Good Supply
Of Farberware Cookware

VALLEY ROAD SPEEDER WAGONS

Also Available - Two Newer Models:



MODEL 350-
10" Air Tires,
20"x40" Bed

\$140
With Racks

MODEL 1300-
13" Air Tires, 24"x48" Bed
Brakes

w/Racks \$162 w/out Racks \$138

Small MODEL 175-
10x175 Wheels, 16"x36"

Bed \$82.00 w/Racks

* Will Ship U.P.S. Anywhere In The U.S. (Except Model 1300) - You Pay Shipping In Advance Or We Will Bill.

Valley Hardware

Feed Carts - Express Wagons - Hardware

Martin Senour Paint - Kendall Motor Oils

958 Vintage Road, Christiana, PA 17509

Hours:

6:30 AM - 7:00 PM, Except Wed., Thurs. 6:30 AM - 4:00 PM. Sat. 6:30 AM - 2:00 PM
Special Saturday Hours: 6:30 am - 4 pm December 4th thru Christmas