



Hog Markets

State Graded Feeder Pig Sale

at Westminster Livestock Auction
Report Supplied by Auction
November 19, 1993
540 PIGS, 2 WEEKS AGO 849. PRICES GENERALLY STEADY, SPOTS 5.00 HIGHER ON 40-60 LB. PIGS.
GRADE 1: 25 HEAD 34 LBS. 75.00; 81 HEAD 45-52 LBS. 84.00-89.00; 46 HEAD 60-66 LBS. 69.00-70.00.
GRADES 1&2: 162 HEAD 41-58 LBS. 70.00-80.00; 153 HEAD 70-79 LBS. 55.00-60.00.
GRADES 2&3: 28 HEAD 43 LBS. 56.00.
BOARS: 26 HEAD 52-56 LBS. 35.00-40.00.
NEXT GRADED SALE FRIDAY, DEC. 3, 1:30 P.M.

New Holland Hog Auction

Lancaster, Pa.
Monday, November 22, 1993
Hog Receipts
Today 934
Last Monday 873
Last Year 914
TREND: Compared to last Monday barrows and gilts 1.00-2.00 lower.
BARROWS AND GILTS: US 1-2 205-255 lb 40.50-41.50.
US 1 210-240 lb 43.50-44.00.
US 1-3 210-255 lb 39.00-40.50.
US 2-3 270-290 lb 38.00-39.00.

Indiana Hogs

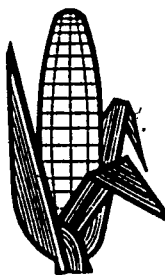
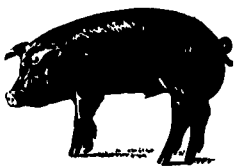
Louisville, Kentucky
Wednesday, November 24, 1993
INDIANA DIRECT HOGS OPENING BARROWS AND GILTS: .50-1.00 HIGHER. DEMAND LIGHT TO MODERATE. COUNTRY US 1-2 230-260 LBS. 40.00-41.50.
US 1-3 230-260 LBS. 37.00-40.50, 210-230 LBS. 36.00-38.00.
SOWS: STEADY.
US 1-3 300-500 LBS. 27.00-32.00, 500-650 LBS. 31.00-34.00.

Lancaster Hogs

Lancaster Stockyards
Saturday, November 20, 1993
Report supplied by auction
There will no longer be a sale auction on Saturday. Sales will be held Monday and Wednesday.

St. Louis Cattle, Hogs

Wednesday, November 24, 1993
OPENING MID-SESSION CLOSE CATTLE & CALVES: 25 (25 SLTR, 0 FDR) INSUFFICIENT VOLUME OF ANY CLASS TO TEST PRICES.



KIRKWOOD HAY AUCTION

Hay, Straw and Grain Auction EVERY TUESDAY
11:00
Located Rt. 472 5 miles south of Quarryville or 6 miles north of Oxford corner of Rt. 472 and Noble Road.

Lloyd H. Kreider, Auctioneer
AU-000513L
No out of state checks

Walter M. Dunlap and Sons offers all cattle feeders two marketing days
Give us a call for advice and marketing conditions.

MONDAYS OR WEDNESDAYS

Consign With Us - For The Marketing Edge

Next Feeder Cattle Sale
Wednesday, Dec. 1st - 11:00 A.M.

Special Note
110 calves from MD weighing 400-600 lbs. Steers & Heifers
40 cattle from Snyder Co., PA weighing 500-600 lbs. Steers & Heifers plus 200 other local cattle.

Pa. Grain

Monday, November 22, 1993
Report supplied by PDA
COMPARED WITH THE MARKET FOR OCTOBER 4, 1993 FOR SOUTH-EASTERN, CENTRAL, AND SOUTH CENTRAL PA: CORN AND SOYBEANS STEADY TO .15 HIGHER; WHEAT STEADY TO .20 HIGHER; BARLEY STEADY TO .10 HIGHER; OATS UNEVEN, MOSTLY STEADY TO STRONG; OLD EAR CORN LITTLE OFFERED; NEW EAR CORN STEADY TO 5.00 HIGHER.
SOUTHEASTERN PENNSYLVANIA
CORN NO. 2-Y RANGE 2.89-3.30, AVERAGE 3.10; @WHEAT NO. 2 RANGE 3.20-3.82, AVERAGE 3.52, CONTRACT FOR HARVEST 3.07-3.27, MOSTLY 2.80-3.70; BARLEY NO. 3 RANGE 2.00-2.30, AVERAGE 2.18, CONTRACT FOR HARVEST 1.85-1.95; OATS NO. 2 RANGE 1.50-1.75, AVERAGE 1.65; SOYBEANS NO. 1 RANGE 6.40-6.68, FEW REPORTED 6.80, AVERAGE 6.59; FEW REPORTED GR. SORGHUM #2 RANGE 2.63, AVERAGE 2.63; FEW REPORTED OLD EAR CORN RANGE 75.00-94.00, AVERAGE 84.22; FEW REPORTED NEW EAR CORN RANGE 64.00-78.00, AVERAGE 71.62.

SOUTH CENTRAL PENNSYLVANIA

CORN NO. 2-Y RANGE 2.90-3.10, AVERAGE 2.92; @WHEAT NO. 2 RANGE 2.85-3.60, AVERAGE 3.23; BARLEY NO. 3 FEW REPORTED RANGE 1.70-2.35, AVERAGE 1.90; OATS NO. 2 RANGE 1.50-1.70, AVERAGE 1.61; SOYBEANS NO. 1 RANGE 5.90-6.65, AVERAGE 6.32; OLD EAR CORN RANGE 55.00-70.00, AVERAGE 62.50; FEW REPORTED NEW EAR CORN RANGE 55.00-70.00, FEW REPORTED 45.00, AVERAGE 61.43.

SOUTHEASTERN, CENTRAL & SOUTH CENTRAL SUMMARY
CORN NO. 2-Y RANGE 2.80-3.30, AVERAGE 3.02; @WHEAT NO. 2 RANGE 3.00-3.82; AVERAGE 3.36; BARLEY NO. 3 RANGE 1.70-2.30, AVERAGE 2.04; OATS NO. 2 RANGE 1.50-1.80, AVERAGE 1.64; SOYBEANS NO. 1 RANGE 6.15-6.68, AVERAGE 6.50; OLD EAR CORN RANGE 60.00-90.00, AVERAGE 75.94; FEW REPORTED NEW EAR CORN RANGE 50.00-78.00, AVERAGE 66.42.

CENTRAL PENNSYLVANIA
CORN NO. 2-Y RANGE 2.80-3.15, FEW REPORTED 2.70, AVERAGE 2.95; @WHEAT NO. 2 RANGE 3.00-3.25, AVERAGE 3.19; BARLEY NO. 3 RANGE 1.70-2.10, AVERAGE 1.88; OATS NO. 2 RANGE 1.50-1.80, AVERAGE 1.65; SOYBEANS NO. 1 RANGE 6.15-6.50, FEW REPORTED 6.85,

Kutztown Produce Auction

Fleetwood, Pa.
Hay and Straw Auction
Sat., Nov. 20, 1993
Report Supplied by Auction
21 LOADS.
WHEAT STRAW: 108.00-110.00.
ALFALFA HAY: 115.00-136.00.
TIMOTHY MIXED HAY: 76.00-110.00.
FIREWOOD: 60.00-120.00 LOAD.

Keister's Hay

Middleburg, Pa.
November 23, 1993
Report supplied by auction
39 LOADS, 24 LOADS OF HAY.
ALFALFA: 115.00-130.00.
MIXED HAY: 90.00-145.00.
STRAW: 3 LOADS, 105.00-115.00.
EAR CORN: 4 LOADS, 100.00-105.00, NEW 80.00.
RYE: 5.00 BU.
OATS: 2.15-2.50 BU.
FIREPLACE WOOD: 20.00-45.00 LOAD.

AVERAGE 6.40; FEW REPORTED PER HUNDREDWEIGHT RECLEANED 15% BUCKWHEAT RANGE 9.00, AVERAGE 9.00; FEW REPORTED OLD EAR CORN RANGE 70.00-75.00; AVERAGE 71.80; FEW REPORTED NEW EAR CORN RANGE 57.00-65.00, AVERAGE 61.00.

WESTERN PENNSYLVANIA
CORN NO. 2-Y RANGE 2.45-2.90, AVERAGE 2.72; @WHEAT NO. 2 RANGE 3.00-3.35, AVERAGE 3.20; BARLEY NO. 3 RANGE 1.90-1.94, AVERAGE 1.92; OATS NO. 2 RANGE 1.10-1.85, MOSTLY 1.40-1.70, AVERAGE 1.55; SOYBEANS NO. 1, RANGE 6.34-6.40, AVERAGE 6.37; FEW REPORTED PER HUNDREDWEIGHT RECLEANED 15% BUCKWHEAT RANGE 8.30, AVERAGE 8.30; FEW REPORTED OLD EAR CORN RANGE 60.00-65.00, AVERAGE 62.50.

MONTH AGO
CORN NO. 2-Y 2.71; @WHEAT NO. 2 3.13; BARLEY NO. 3 1.79; OATS NO. 2 1.56; SOYBEANS NO. 1 5.99; EAR CORN 70.96; FEW REPORTED NEW EAR CORN 57.33.

YEAR AGO
CORN NO. 2-Y 2.19; @WHEAT NO. 2 3.36; BARLEY NO. 3 1.72; OATS NO. 2 1.45; SOYBEANS NO. 1 5.28; FEW REPORTED NEW EAR CORN 52.78.

Regional Hay

November 22, 1993
Eastern, Pa.
HAY & STRAW MARKET FOR EASTERN PA - (ALL HAY NO. 2 AND BETTER. PRICES PAID BY DEALERS AT THE FARM & PER TON). HAY AND STRAW STEADY TO STRONG.
ALFALFA 90.00-120.00; MIXED HAY 85.00-120.00, FEW REPORTED 70.00; TIMOTHY HAY 85.00-110.00, FEW REPORTED 70.00; STRAW 60.00-95.00; MULCH 25.00-50.00.

SUMMARY OF LANCASTER CO. HAY AUCTIONS FOR WEEK ENDING 11/19/93. PRICES PER TON: LOADS: 217 HAY, 86 STRAW & 16 EAR CORN.
ALFALFA 89.00-140.00; MIXED HAY 80.00-145.00; TIMOTHY HAY 100.00-150.00; STRAW 90.00-130.00; EAR CORN 78.00-110.00.

SUMMARY OF CENTRAL PA. HAY AUCTIONS FOR WEEK ENDING 11/19/93. PRICES PER TON: LOADS: 123 HAY, 23 STRAW & 18 EAR CORN.
ALFALFA 75.00-127.50; MIXED HAY 55.00-130.00; TIMOTHY HAY 70.00-120.00; STRAW 76.00-105.00; EAR CORN 75.00-106.00.

Good's Hay

Leola, Pa.
Wed., November 24, 1993
Report Supplied by Auction
TOTAL LOADS: 64.
MIXED HAY: 76.00-155.00.
TIMOTHY: 85.00-150.00.
STRAW: 87.00-135.00.
ALFALFA: 60.00-140.00.
CORN: 77.00-101.00.
OATS: 2.50 BU.
CLOVER: 75.00.
GRASS: 80.00-102.00.
CORN FODDER: 47.00.
STUBBLE HAY: 85.00.

Westminster Hay

Westminster, Md.
Tuesday, November 23, 1993
Report Supplied by Auction
ALFALFA: 190-3.20 BALE.
TIMOTHY: 87.50, 90-3.40 BALE, 16.00-25.00 LARGE ROUND.
MIXED HAY: 62.50, 1.50-2.90 BALE.
CLOVER: 1.10-1.70 BALE.
GRASS: 1.20-2.10 BALE, 14.00-18.00 LARGE ROUND.
WOOD: 47.00-100.00 CORD.
STRAW: .80-2.00 BALE.

Diffenbach Auction Center

New Holland, Pa.
Monday, November 22, 1993
Report Supplied by Auction
TOTAL LOADS: 153.
ALFALFA: 60.00-165.00.
MIXED HAY: 57.00-157.00.
TIMOTHY: 82.00-152.00.
CLOVER: 90.00.
BROME GRASS: 87.00-95.00.
ORCHARD GRASS: 69.00-130.00.
STRAW: 52.00-112.00.
EAR CORN: 83.00-120.00.
OATS: 2.10-2.50.

Leinbach's Hay

Shippensburg, Pa.
November 20 and 23
Report Supplied by Auction
57 LOADS.
ALFALFA: GOOD 95.00-165.00, FAIR 70.00-88.00.
MIXED HAY: 56.00-117.00.
TIMOTHY: 67.00-110.00.
CLOVER: 57.00.
BROME GRASS: 89.00-150.00.
ORCHARD GRASS: 82.00-95.00.
STRAW: 90.00-112.00.
EAR CORN: 85.00-95.00.
OATS: 2.10 BU.
WOOD: 25.00-70.00 LOAD.

Kirkwood Hay Auction

Kirkwood, Pa.
Tuesday, November 23, 1993
Report Supplied by Auction
48 LOADS OF HAY.
MIXED HAY: 1ST CUTTING 50.00-110.00, 2ND CUTTING 90.00-110.00.
TIMOTHY: 100.00-170.00.
ALFALFA: 1ST CUTTING 45.00-90.00, 2ND CUTTING 66.00-102.00, 3RD CUTTING 100.00-122.00, 4TH CUTTING 70.00-100.00.
CLOVER: 70.00-71.00.
GRASS: 86.00-164.00.
WHEAT STRAW: 90.00-108.00.
RYE STRAW: 78.00.
OATS: 2.00 BU.
SALE TIME 11 A.M.

Dewart Hay

Dewart, Pa.
Monday, November 22, 1993
Report Supplied by Auction
11 LOADS OF HAY, 66.00-137.00.
STRAW: 3 LOADS, 63.00-93.00.
WOOD: 10 LOADS, 39.00-73.00.
CORN: 2 LOADS, 69.00 AND 74.00.
OATS: 3 LOADS AT 1.85-1.90 BU.



PENNFIELD GRAIN BANK

Pennfield Offers A Sound Program For The Dairy Farmer To Use His Grain "Same As Cash" To Reduce His Monthly Feed Bill, And To Avoid Having To Take "Harvest Price" For His Grain

Prices Week Of 11/29/93
Corn \$3.31 Bu.
Soybeans \$6.67 Bu.
Barley \$2.35 Bu.

- No Storage Charges
 - Prices Updated Weekly
 - Grain Bank Balance Shown On Each Invoice
 - No Hidden Charges
 - "Ton-For-Ton" Free Hauling
- For every ton of dairy feed purchased you will receive one ton of grain back hauled at no charge.



In This Issue

Four Sections

FEATURES

- NAFTA Trade..... A18
- Export Cattle..... A19
- Lebanon Dairymen..... A24
- FFA Convention..... A30
- Conservation Awards..... A33
- Kenburn Holsteins..... A37
- Cumberland Farm Women... B 7
- Lois Bohn..... B12
- Adams Co. Beef..... B19
- FFA National Winners..... C 8

DEPARTMENTS

- Editorial..... A10
- Farm Calendar..... A10
- Farm Forum..... A10
- Futures..... A16
- Mailbox Markets..... B23
- Sale Reports..... B26
- Public Auction Register..... B28
- Business News..... C 2, C 6
- Classified Ads... C10, C22, D 4

COLUMNS

- Now is the Time..... A10
- On Being A Farm Wife..... B 3
- Taking Time..... B 4
- Have You Heard..... B 5
- Ida's Notebook..... B15
- Poultry Pointers..... C 4

DAIRY

- Cumberland DHIA..... A20
- Lebanon Dairymen..... A24
- DHIA Focus..... A26
- Top DHIA Breed..... C 3
- Highest Protein..... C 5
- Lowest SCC..... D 2

HOME AND YOUTH

- Homestead Notes..... B 2
- Home On The Range..... B 6
- Cook's Question Corner..... B 8
- Kid's Korner..... B10
- 4-H Happenings..... B18, B20