

## Oklahoma Cattle

Oklahoma City, Okla.

Wednesday, November 24, 1993

### WEEKLY CATTLE SUMMARY:

Compared to last week: Steer and heifer calves steady. Yearling steers and heifers steady but lightly tested as vast majority of receipts were calves from 350-775 lbs.. Trade moderately active. Demand good for calves in average thru the thinner flesh conditions; demand very light for soft fleshed calves just off cows as arctic front will move in Wednesday. Quality of calf supply plain to attractive with increased percentage of top end calves. Flesh condition of calves average to slightly thin, end fleshy. Slaughter cows firm to \$1.00 higher. Slaughter bulls steady to \$1.00 lower. Slaughter cattle demand moderate. Demand very good for replacements or thin cows to graze wheat pasture. Near 60 percent of cow supply sold to pasture or feeding accounts. 700 cows and bulls sold. Receipts this week 8,000; last week 5,977; last year 3,335. Supply consisted of 37 percent yearlings and calves over 600 lbs.; 54 percent calves under 600 lbs.; 9 percent cows and bulls. Prices follow with weighted average weight and price in parenthesis.

Feeder Steers: Medium and Large Frame 1: 350-400 lbs. (376 lbs.) \$108.00-\$115.00 (\$109.19); 400-450 lbs. (433 lbs.) \$102.00-\$110.00 (\$105.80); 450-500 lbs. (470 lbs.) \$96.50-\$101.75 (\$100.08); 500-550 lbs. (530 lbs.) \$90.00-\$96.50 (\$94.16); 550-600 lbs. (575 lbs.) \$88.00-\$95.25 (\$91.40); 600-700 lb. (650 lbs.) calves and few yearlings \$84.25-\$88.50 (\$86.25); 700-800 lb. yearlings \$85.50-\$88.00 (\$85.90); 800-850 lbs. (829 lbs.) \$79.10-\$84.00 (\$82.96).

Feeder Heifers: Medium and Large

Frame 1: 300-400 lbs. (350 lbs.) \$93.50-\$101.00 (\$100.52); 400-500 lbs. (450 lbs.) \$85.50-\$94.00 (\$90.68); 500-600 lbs. (550 lbs.) \$83.00-\$86.50 (\$85.07); 600-700 lbs. (650 lbs.) \$80.00-\$83.50 (\$82.33); 700-800 lbs. (750) \$80.00-\$82.00 (\$80.92); few 800-850 lbs. (837 lbs.) \$76.00-\$78.50 (\$78.25).

Slaughter Cows: Cutter, Boning and Breaking Utility Y.G. 1-4 average dressing \$43.50-\$46.50; few high dressing \$47.00-\$48.50; low dressing \$39.00-\$43.00. Canner and low Cutter \$34.50-\$39.50.

Slaughter Bulls: Y.G. 1 1250-1900 lbs. average dressing \$56.00-\$59.50.

Replacement Cows: Pre-tested for Bangs, pregnancy and age Medium and Large Frame No. 1: HIGH QUALITY: 2-7 yrs old 850-1225 lbs. 4-7 months bred \$625.00-\$700.00/head 8-10+ yr old 1100-1150 lbs. 5-7 months bred \$515.00-\$565.00/head AVERAGE QUALITY: 2-7 yrs old 800-1125 lbs. 3-7 months bred \$510.00-\$615.00/head 8-10+ yr old 925-1000 lbs. 4-6 months bred \$425.00-\$495.00/head.

Pairs: Medium and Large Frame 1: HIGH QUALITY: 975-1150 lb. 4-6 year old cows with 100-300 lb. calves \$770.00-\$800.00. AVERAGE QUALITY: 700-1025 lb. 2-6 year old cows with 100-200 lb. calves \$710.00-\$760.00; 900-1050 lb. 10+ year old cows with 100 lb. calves \$610.00-\$635.00.

THIS REPORT COMPILED & PREPARED BY THE OKLAHOMA CITY LIVESTOCK & GRAIN MARKET NEWS BRANCH OF THE USDA'S AGRICULTURE MARKETING SERVICE. ROBERT MILES - TINA DOEBLER TELEPHONE (405) 232-5425.

## Central U.S.

### Carlot

#### Beef Report

November 23, 1993

Report supplied by USDA

CENTRAL U.S. CARLOT BEEF REPORT (INCLUDES THE MAJOR PRODUCTION AREAS IN THE MIDWEST AND TEXAS) AS OF 3:00 P.M. COMPARED TO MONDAY'S 3 P.M. REPORT: UTILITY CARCASSES STEADY; CUTTER NOT ESTABLISHED; BULLS 1.00-2.00 HIGHER. DEMAND AND OFFERINGS LIGHT.

COW AND BULL CARCASSES  
FOB OMAHA BASIS  
4 LOADS REPORTED

UT, BRK 2-4, 450 & UP, 1 LOAD, RANGE 74.00, LATEST ESTB. MKT. 74.00.

UT, BNG 1-3, 400 & UP, 1 LOAD, RANGE 78.00, LATEST ESTB. MKT. 78.00.

CUTTER 1-2 350 & UP, LATEST ESTB. MKT. 92.00-92.50 B.

BULLS 500 LBS. AND UP, YG1, 2 LOADS, RANGE 102.00-103.00, LATEST ESTB. MKT. 102.00-103.00.

BONELESS PROCESSING BEEF/  
BEEF TRIMMINGS

89 LOADS REPORTED

FRESH 90% BONELESS BEEF GENERALLY STEADY; 85% MOSTLY 1.50-3.00 LOWER; 75% FIRM TO 1.00 HIGHER; 65% GENERALLY STEADY. DEMAND MODERATE TO FAIRLY GOOD FOR MODERATE TO HEAVY OFFERINGS. BEEF TRIMMINGS WEAK ON LIGHT TO MODERATE DEMAND AND OFFERINGS.

90% FR, 40 LOADS, RANGE

124.0-127.0, WT. AVG. 125.94.

90% FZ, RANGE 129.0, WT. AVG. 129.00 D.

85% FR, 5 LOADS, RANGE 115.0-117.5, WT. AVG. 116.60.

85% FZ, UNQUOTED.

75% FR, 3 LOADS, RANGE 93.5-94.0, WT. AVG. 93.83.

75% FZ, UNQUOTED.

65% FR, 13 LOADS, RANGE 75.00-76.00, WT. AVG. 75.46.

65% FZ, UNQUOTED.

50% FR, 25 LOADS, RANGE 47.00-49.00, WT. AVG. 47.32.

50% FZ, 2 LOADS, RANGE 50.00-51.00, WT. AVG. 50.50.

50% BX, UNQUOTED.

BULL 92-94, 1 LOAD, RANGE 139.00, WT. AVG. 139.00.

FOB EAST TX AND OK

90% FR, UNQUOTED.

90% FZ, UNQUOTED.

85% FR, UNQUOTED.

85% FZ, UNQUOTED.

75% FR, UNQUOTED.

75% FZ, UNQUOTED.

65% FR, UNQUOTED.

65% FZ, UNQUOTED.

BULL 92-94 UNQUOTED.

CAF NORTHEAST AREAS

90% FR, UNQUOTED.

90% FZ, UNQUOTED.

85% FR, UNQUOTED.

85% FZ, 75% FR, 75% FZ, 65% FR AND 65% FZ, UNQUOTED.

\*\*ABCDE AFTER QUOTES REPRESENTS DAYS SINCE LAST ACTUAL MARKET TEST. QUOTES ARE DROPPED AFTER 5 DAYS OF NO TEST

OR BEFORE IF THEY NO LONGER REFLECT CURRENT MARKET CONDITIONS.\*\*

## Dewart Livestock

Dewart, Pa.

Monday, November 22, 1993

Report Supplied by Auction

CATTLE: 121. COMPARED WITH LAST MONDAY'S MARKET, SL COWS 2.00-3.50 HIGHER.

STEERS: ONE SELECT 62.25.

HEIFERS: ONE CHOICE 64.75.

COWS: BREAKING UTILITY AND COMMERCIAL 46.75-51.75, CUTTER AND BONING UTILITY 47.00-51.00, CANNER AND LOW CUTTER 40.00-45.50. SHELLS DOWN TO 38.00.

BULLS: COUPLE YIELD GRADE NO. 1 1175-1530 LBS. 57.00 & 63.00, ONE NO. 2 1100 LBS. 52.75.

FEEDER CATTLE: STEERS AND BULLS: FEW LARGE NO. 2 350-550 LBS. 55.00-59.00; HEIFERS: FEW MEDIUM FRAME NO. 1 275-775 LBS. 59.00-70.00; BULLS: FEW MEDIUM FRAME NO. 1 300-600 LBS. 57.00-71.00.

CALVES: 171. VEALERS: FEW STANDARD AND GOOD 70-100 LBS. 60.00-65.00, FEW UTILITY 50-80 LBS. 50.00-55.00.

FARM CALVES: NO. 1 90-130 LBS. HOLSTEIN BULLS 125.00-160.00, NO. 2 80-125 LBS. 70.00-110.00; NO. 1 85-130 LBS. HOLSTEIN HEIFERS 155.00-197.50. FEW BEEF CROSS 70-100 LBS. BULLS AND HEIFERS 100.00-187.50.

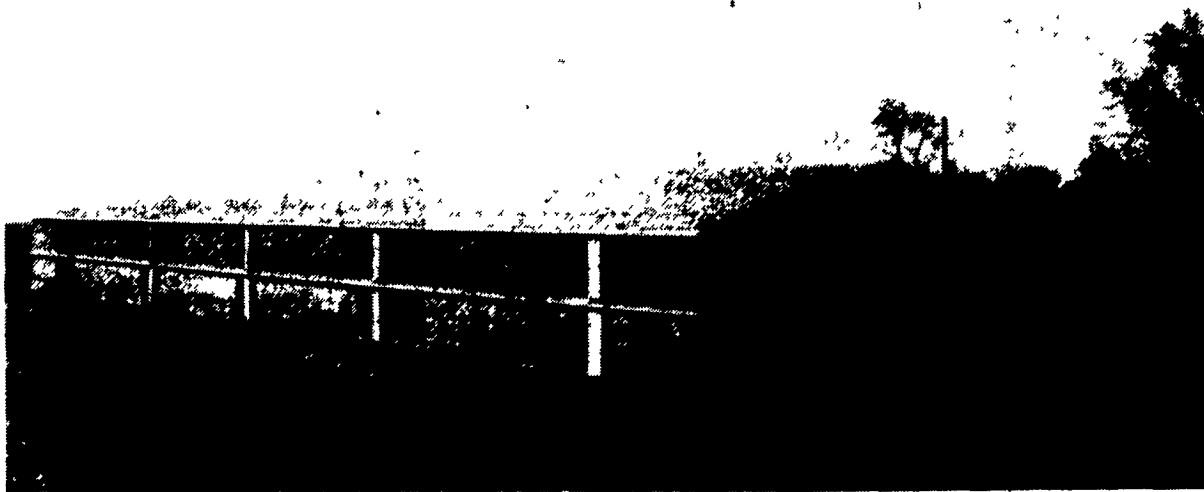
HOGS 95: BARROWS & GILTS: FEW LOTS US NO. 1-2 225-245 LBS. 38.10-40.60, LOT US 1-3 235 LBS. 37.00, COUPLE LOTS US 1-3 180 LBS. 31.00 & 31.50. SOWS: US 1-3 300-635 LBS. 28.75-32.00.

FEEDER PIGS: 61 US 1-3 25-30 LBS. 16.00-21.00, 35-40 LBS. 30.00-31.00 PER HEAD.

SHEEP: 2 SLAUGHTER SHEEP: 19.00 & 20.00.

GOATS: NO MARKET TEST.

## WHO'S CONTROLLING YOUR BROILER HOUSE INLET WHEN YOU ARE NOT THERE?



WE WILL DO IT FOR YOU!

LET HERSHEY EQUIPMENT CO. INSTALL THE *PRO II* INLET CONTROLLER FROM

**Agri Ventilation Systems, INC.**



Building Ventilation Controllers with the Grower in Mind

- ★ REGULATES AIR INLET DOORS
- ★ MAKES THE BEST USE OF YOUR FAN POWER
- ★ MAINTAINS MORE CONSISTENT AIR QUALITY
- ★ HELPS YOUR BIRDS GET PEAK PERFORMANCE

**HERSHEY**  
EQUIPMENT CO.

255 PLANE TREE DRIVE  
LANCASTER, PA 17603  
(717) 393-5807

If It's Worth Your Investment, Trust It To Hershey



Choose from a wide range of standard or custom Lester wood frame storage facilities. Each features advanced Uni-Frame® engineering. Top quality materials. The industry's leading warranty. The support of the nation's leading building company. And built-in convenience.

Call your local Lester dealer or 1-800-826-4439 today. You tell us what, when and where. We'll do the rest.

THE BRAND THAT  
MAKES THE DIFFERENCE.

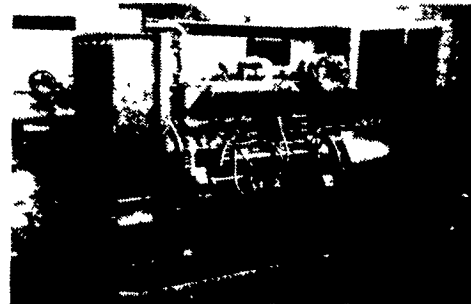
**LESTER**

LESTER BUILDING SYSTEMS  
A Division of Butler Manufacturing Company

**VALLEY VIEW CONSTRUCTION, INC.**  
2622 Valley View Rd., Morgantown, PA 15543

Office (215) 286-5407 • Home (215) 445-8317

**MARTIN MACHINERY**



**GENERATORS**

Sales ★ Service ★ Rentals  
★ Complete Generator Systems  
★ PTO ★ Portables ★ 2-1600 KW

"We Service It If You Have It  
And Sell It If You Need It"

34 W. Mohler Church Rd.  
Ephrata, PA 17522

Tel: 717-738-0300  
Fax: 717-738-4329