

Tractor Tires and Wheels
9.5-24, Fits AC Tractor
Model CA, Like New. \$15
Each. (410)472-4737.

Two gravity wagons: (1)
200 bushel, \$1,700, (1)
300 bushel, \$1,200, good
condition. (717)872-7801.



NH28 Blower
NH 40 Blower
Woods HD 315 Batwing
NH 38 Crop Chopper
Ford 1520 4WD
MF 255 Diesel
Satoh Beaver, 4WD
w/Mower
JD 2940 4x4
AC WD Tractor
MF 1045 4WD w/72" Deck
Ford 8700 Flat Deck
NH 488 Haybine
NH 478 Haybine
6' 3 pt. Brush Cutter
Work Saver 7' Rear Blade
Gehl 99 Blower
Fox Blower
MF 52 Disc
NH 668 LH Tank Spreader
Shaver HD 12 Post Driver
F/NH Skid Steers
NH L225 Skid Steer
IH Hay Rake
Gehl CB600 w/2 Heads
Gehl 99 Blower
JD 336 Baler w/Thrower
IH 430 Baler w/Thrower
Woods C80 Rotary Cutter
NH 782 Forage Harvester,
2 Heads
NH 520 Spreader



**SCHREFFLER
EQUIPMENT**
Pitman, PA
717-648-1120
717-648-1811

Tractors:
4630 dsl, 4030 dsl., 2840 dsl., (2)
2510 gas, 2010 gas.

Planting Equipment:
4R Stanhay, 15R Stanhay, 8R
Planet Jr., 9R JD #71, IH 510 grain
drill (6x24), 4R Holland
transplanter, 9R Holland
transplanter.

Fertilizer Applicators:
Vicon 1400# hopper 3pt. hitch,
Wilmar 5-ton w/side auger, 3pt.
hitch 6x30" side dresser w/SS
hopper.

Tillage:
Lely Roterra 15' w/bed shapers,
JD 6-shenk subsoiler, JD 25 coil
spring field cultivator, (3) Brillion
packers 12' & 4', bed shaper 15'
wide 3-60" beds or 9 rows, bed
shaper 10' wide 4-30 rows, M&M
5x18" 2-way mold board plow.

Cultivators:
JD RR4, JD RM 15' 9R w/shields,
JD RM 15' 3 beds, Ford 11 shenk
2R w/shields.

Flat 2-Wheel Wagons:
(4) 8'x20' 8-ton, (2) 8'x17' 8-ton, (2)
8'x16' 4-ton, (3) Chisom rider
dump carts.

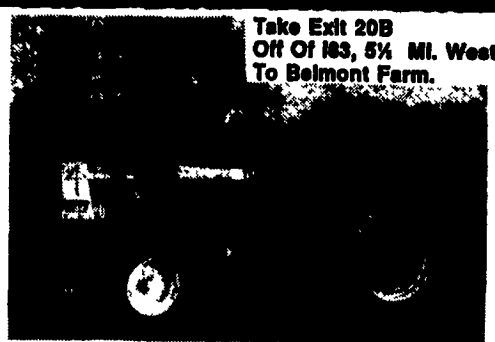
Irrigation:
Detroit 671 w/Worthington
2000/GPM, Duetz 135hp
w/Cornell 1400/GPM, (2)
Rainbow travelers.

Wade Rain Pipe:
(34) 8"x40' ring lock, (96) 6"x40',
(280) 4"x40' w/Rainbird 30's, T's,
L's, valves & plugs.

Trucks
'81 Int. 2600 Tdm. Axle, 22' flat
dump, w/grain sides, 56 GVW.
80' Int. 1800, 20' flat w/grain sides,
27 GVW. '78 Ford F600 step van,
15 GVW. '74 Ford 750 Cab/
Chassis 27 GVS. '65 GMC 3000,
22' van body, 27 GVW. '70
Diamond Reo Tandem Tractor.
1969 Fruehauf Stainless Steel 13'
4"x45' Dry Box

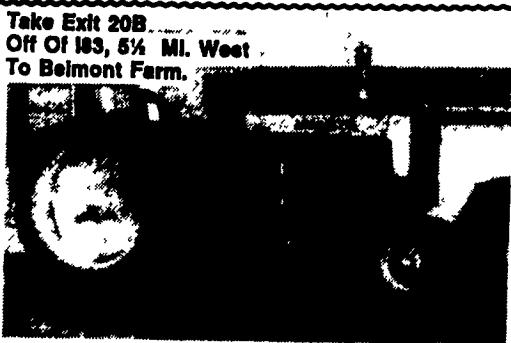
609/358-0831

FOR SALE
Case IH 2294, 130 hp, 5200 Hrs., excel-
lent condition, ready to work, air,
radio, etc. \$16,500.00
Krause 3200 heavy disc, 17' cut, excel-
lent condition, \$3,500.00
Brillion 15' cultipacker, \$1,500.00
John Deere 11 tooth chisel plow,
\$1,500.00
Call Jack, 410-557-8643



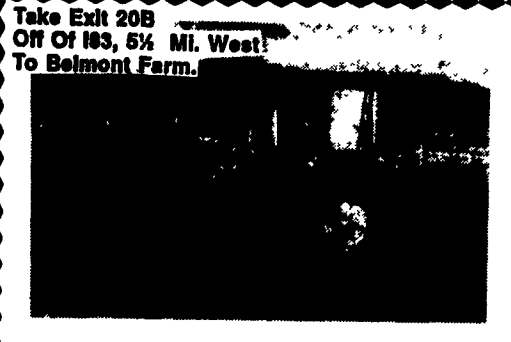
Take Exit 20B
Off Of I83, 5 1/2 MI. West
To Belmont Farm.

IH 656
Gas, 65 HP
\$3,500
410-833-9091



Take Exit 20B
Off Of I83, 5 1/2 MI. West
To Belmont Farm.

JD 430
Gas, Tricycle
\$2,800
410-833-9091



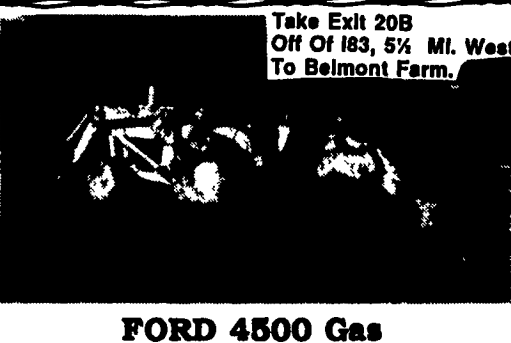
Take Exit 20B
Off Of I83, 5 1/2 MI. West
To Belmont Farm.

MF 40
Diesel w/3 Point
\$3,000
410-833-9091



Take Exit 20B
Off Of I83, 5 1/2 MI. West
To Belmont Farm.

CAT D7G
Straight With Tilt 92V 4165
\$32,000
410-833-9091



Take Exit 20B
Off Of I83, 5 1/2 MI. West
To Belmont Farm.

FORD 4500 Gas
\$5,800
JD 300 With 3 Point
\$5,500
410-833-9091

Riesler 64' tapered board
feeder. JD flex head divider
points. 215-683-8278.

Rotary Mower, Rhino 3Pt.
Hitch, 60" Swath, Model
SE5, Asking \$400. Mount-
ville, PA (717)285-4636.

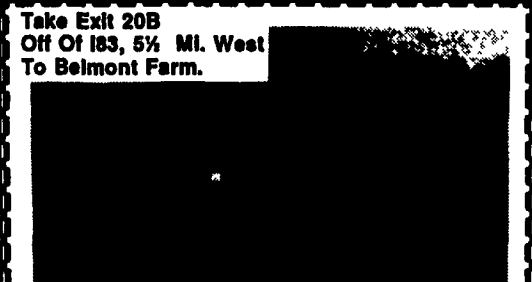
Round bale carrier, 3pt
demo, \$175.
(301)898-7426.

Steiger tractor 350hp, just
overhauled, new clutch
and more. Phone even-
ings, (216)898-5381.



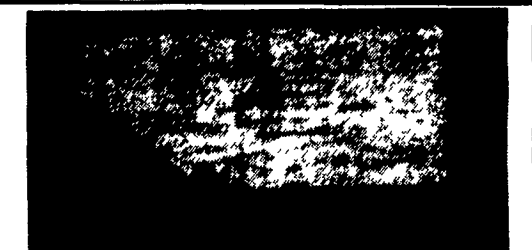
Take Exit 20B
Off Of I83, 5 1/2 MI. West
To Belmont Farm.

IH 504
Gas, 45 HP, Fresh Engine
and T/A
\$3,500
410-833-9091



Take Exit 20B
Off Of I83, 5 1/2 MI. West
To Belmont Farm.

JD 300
Gas w/3 Point
\$5,500
Also Avail.
Ford 4500 Gas
\$5,800
410-833-9091



Horning Feed Carts
3/4" Plywood Air Tires
Four Sizes In Stock
LUKE Z. HORNING
R1, Box 561, Distillery Rd.
Newmanstown, PA 17073
717-949-2147

Paul B. Zimmerman Inc.
Ephrata, Pa

Huber Animal Health
Myerstown, Pa

Kauffman Farm Supply
Mt. Pleasant Mill, Pa

Kauffman Farm Supply
Belleville, Pa

M & M Barn Sales
Westfield, Pa

E. M. Herr Farm & Home
Willow St, Pa

Tri-County
Lebanon, Pa

Northeast Agri
Lititz, Pa

Terre Hill Supply
Terre Hill, Pa

Ann Lick Farm Supply
Port Royal, Pa

Martin Tractor

866 Greenspring Rd.
Newville, PA 17241

Used Tractors

Case 1370 \$7,500 • IH666 \$5,500 • Oliver
1850 \$4,500 • JD 3020 WF, \$6,200 • Case
DC(FootClutch) \$950, • White 2-1^{1/2} Ford
TW10.

Used Tractor Parts

Most Makes and Models
Have Large Selection

Recent Arrivals: JD 4030; JD 4230; JD
4320; IH 706; IH350; MM UB; AC 185; AC
D17; Ford 5000; Ford 961; JD 1530; Case
300; MM 900; White 2-105; Oliver 1650;
Farmall 340; IH 856; AC D19; Case
1070; Long 460.

Call (717) 776-7542
for detailed information
MON-FRI 8-5 SAT 8-12
No Sunday Calls Will Ship UPS
No Out-Of-State Personal Checks

Patz Barn Cleaner, Model
467; (2) C-47 Starline barn
cleaners w/drive units, 16"
peddles, 400' total chain,
make offer. 215/827-7687.

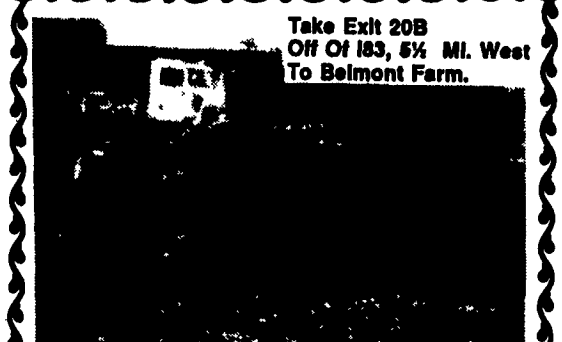
Reconditioned manure
SPREADERS NI 206, 17,
and 12A, good shape,
\$1,100. Rewooded 14A,
\$1,400 and 10A \$1,900.
Excellent shape. Also have
"as is" spreaders, \$250 and
up. Tom Wheary
(717)887-0102.

Shaver Post Drivers: HD8
\$1095, HD10 \$1695. Ta-
neytown Farm & Hard-
ware, 410/751-1500.

SKID LOADER HYDRO
MACK 12C w/water cooled
engine, runs excellent.
\$4,000. 410-833-9091

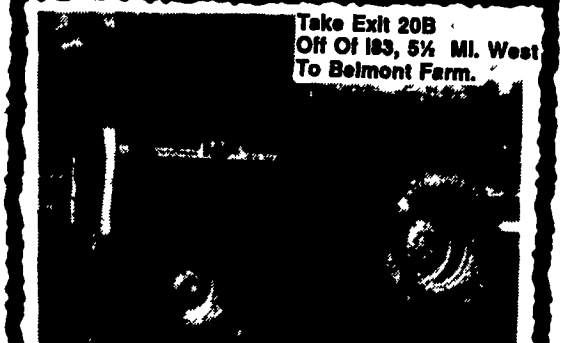
Snap-on duals w/clamps
18-34, \$125.
717/532-5926.

Snow blades for regular
Cub, Lo-boy Cub, and Cub
154-184, \$450 each. Tom
Wheary (717)887-0102.



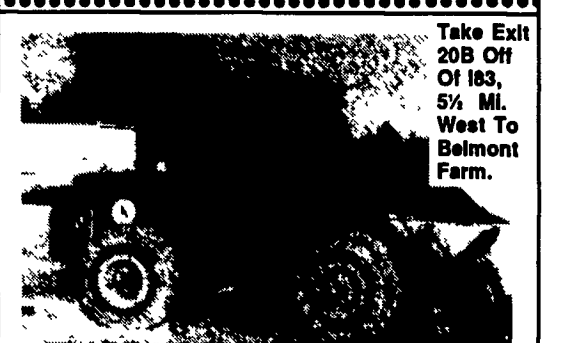
Take Exit 20B
Off Of I83, 5 1/2 MI. West
To Belmont Farm.

JD 1010
Industrial Gas With Loader,
Stuck Engine
\$1,800
410-833-9091



Take Exit 20B
Off Of I83, 5 1/2 MI. West
To Belmont Farm.

MF 255
Diesel, Multi Pwr., 3 Pt. and
Outlet, Nice
\$5,200
410-833-9091



Take Exit
20B Off
Of I83,
5 1/2 MI.
West To
Belmont
Farm.

CAT 950
1978 81J Series
\$35,000
410-833-9091

TRACTORS

MF 1135, 20.8x38 tires w/cab
MF 275 diesel w/38" rubber
MF 275 diesel 28" rubber, cab
MF 165 diesel, good rubber
MF 135 gas w/995 hrs, sharp
MF 85 gas narrow front
MF 65 gas w/38" rubber
MF 35 Gas w/power steering
455 DA quick attach loader

EQUIPMENT

Athens 7 tooth chisel plow
NH 30' Elevator w/motor
IH 510 grain drill, 7x18
Farmhand mix mill 817, sharp
MF 4 bottom, semi mount plow
Athens 11 1/2' disc harrow — 14' wing disc
Cultipackers: 14', 12' and different sizes
JD 10' cultimulcher
Used Brillion cultipacker and cultimulcher parts
New farm and corral gates

MF Tractor parts Dismantling: 20, 30, 35, 40,
50, 65, 85, 90, 135, 150, 165, 175, 178, 180, 285,
399 4WD; 1080, 1085, 1100, 1130, 1135, 1150
w/cab, 1155, 3680, MH 44, NH 785 skid ldr.

NOLT'S EQUIPMENT

403 Centerville Rd., Newville, PA 17241
(717) 776-6242 No Sunday Calls
No Out-Of-State Personal Checks
We Ship UPS