

Lancaster Co. Livestock Market Auctions

Lancaster Livestock Auction

Lancaster, Pa.
Monday, November 15, 1993
Cattle Calves Hogs Sheep Goats

Monday's Auction	632	90	243	691	350
Last Monday	674	110	347	922	421
Last Year	984	117	154	854	363

CATTLE: Slaughter steers fully steady; slaughter heifers 2.00-3.00 higher than last Monday; cows fully steady; bullock fully steady; bulls firm to 1.00 higher. Supply included 43% slaughter steers, 20% slaughter heifers, 20% cows, and 17% bulls.

SLAUGHTER STEERS: Choice 2-3 few 4 1175-1450 lb 69.50-73.00; mixed Choice and Prime 2-4 1200-1400 lb 72.00-74.50, couple 75.25; few Choice 3 to mostly 4 1250-1475 lb 67.25-69.00; Select and low Choice 2-3 1075-1375 lb 66.75-70.00; one lot 980 lb returned to feed at 74.85, couple lots 890-980 lb 70.25-72.50.

HOLSTEINS: Choice 2-3 1170-1700 lb 61.25-63.50; few High Choice and Prime 2-3 1200-1650 lb 63.00-65.50; Select 1-3 1250-1400 lb 59.00-61.50, with 10 head 1075-1365 lb returned to feed at 58.85-69.35.

SLAUGHTER HEIFERS: Choice 2-3 950-1325 lb 66.50-71.50, one lot 848 lb 62.00; few Choice 2 1150-1315 lb 71.50-72.50; Select 2-3 950-1150 lb 61.75-66.00.

COWS: LO DRESSING BULK HI DRESSING Breaking Utility & Commercial 2-3 46.00-48.00 48.00-49.00 Commercial 3-4 40.00-45.00 Cutter & Boning Utility 1-3 41.00-43.00 43.00-46.50 46.50-48.00 Canner & low Cutter 1-2 38.00-40.00 40.00-41.00.

BULLOCKS: Choice 2-3 1100-1400 lb 66.50-69.50, couple 70.00-72.75; Select 1-3 1050-1350 lb 60.50-65.00.

BULLS: Yield grade 1 1500-2000 lb 61.00-67.00, few 67.00-69.00, eight head 1330-2035 lb 70.75-77.75, couple 2200-2330 lb 62.85-67.75; Yield grade 2 few 2000-2625 lb 52.00-57.00, 1050-1500 lb 55.00-60.50, few low dressing 52.00-55.00.

CALVES: Small supply vealers steady; slaughter calves steady, instances 5.00 higher. Demand good for Holstein bulls to return to farm.

VEALERS: Couple Choice 200-350 lb 90.00-100.00; high Good and low Choice 75-110 lb 50.00-60.00.

SLAUGHTER CALVES: Good and Choice 300-550 lb 60.00-75.00, few Choice 75.00-80.00.

RETURNED TO FARM: Bulk 90-120 lb Holstein bulls 130.00-150.00.

HOGS: Barrows and gilts firm to mostly 50 higher, instances 1.00 higher; sows steady.

BARROWS AND GILTS: US 1-2 240-270 lb 43.50-45.00. US 1-3 220-260 lb 41.60-42.50, 240-290 lb 40.85-41.35.

SOWS: US 1-3 300-500 lb 35.00-37.00. 500-650 lb 36.00-38.75.

BOARS: All Weights 30.00-33.75.

SHEEP: Slaughter lambs 4.00-6.00 higher; slaughter ewes firm to 5.00 higher. Supply included an estimated 75% slaughter lambs with the balance slaughter ewes.

SLAUGHTER LAMBS: Choice 2-3

Vintage Livestock Auction

Paradise, Pa.
Tuesday, November 16, 1993
Report Supplied by USDA
Cattle Calves Sheep Goats

Today	651	955	3	1
Last Tuesday	673	890	7	11
Last Year	816	834	13	0

CATTLE..USDA.. Supply included 28% slaughter steers and 51% cows, 14% feeders with the balance sl. heifers and bulls. Compared with Tuesday's market: sl. steers fully steady; few sl. heifers steady; cows 1.00 to 1.50 higher; bullocks not tested; bulls steady. **SLAUGHTER STEERS:** Choice 2-3 few 4 1100/1450 lb. 69.75-73.00, few 73.00-73.50, Choice and Prime 2-3 1100/1425 lb. 73.50-74.75, couple 75.00-75.75, Choice 3-4 1200/1450 lb. 68.25-69.25, couple 1500/1600 lb. 67.00-68.00, Select and Low Choice 2-3 1100/1450 lbs. 65.25-66.50, Select 2-3 1050/1300 lbs. 64.00-67.00. **HEIFERS:** few Choice 2-3 1060/1200 lbs. 67.75-70.75. **COWS:** Breaking Utility and Commercial 2-3 bulk 45.75-48.50, high dressing 48.50-50.75, Commercial 3-4 bulk 42.00-46.50, Cutter and Boning Utility 1-3 low dressing 41.00-44.00, bulk 44.00-47.00, high dressing 47.00-48.50, Canner and Low Cutter 1-2 low dressing 38.00-40.50, bulk 40.50-42.25. **BULLS:** Yield Grade No. 1 1300/1970 lbs. 61.50-63.75, No. 2 1300/1500 lbs. 57.00-69.75, couple 2090 lbs. 56.00. **FEEDERS:** Steers: couple lots Medium and Large No. 1 440/585 lbs. 86.50-88.00; Heifers: one lot Medium and Large No. 1 400 lbs. 65.00 around 35 head Small & Medium 735/1035 lbs. stock cows 43.00-44.75.

CALVES... Small supply vealers steady, with near 100 head sold for slaughter. Supply included 829 in graded sale. **VEALERS:** one Choice 235 lbs. 80.00, few High Good and Low Choice 155/270 lbs. 65.00-85.00, 75/110 lbs. 52.00-62.00, Standard and Low Good 70/85 lbs. 45.00-50.00, couple lots 55/65 lbs. 23.00-30.00. **RETURNED TO FARM:** 35 head 120/125 lbs. Holstein bulls 130.00-155.00, 320 head 90/115 lbs. 145.00-157.00, and 40 head 80/85 lbs. 127.00, 35 head small frame 110/115 lbs. 100.00-110.00, 155 head 90/105 lbs. 130.00-140.00, and 45 head 75/85 lbs. 52.00-60.00; 30 head 100/115 lbs. Holstein heifers 207.00-214.00, 33 head 90/95 lbs. 187.00-201.00 and 15 head 80/85 lbs. 175.00, 20 head small frame 80/90 lbs. 130.00-150.00 and 20 head 70/75 lbs. 112.00-120.00.

SHEEP... Insufficient volume for a market test. **GOATS...** Insufficient volume for a market test.

80-105 lb 70.00-80.00, 50-80 lb 72.00-85.00.

SLAUGHTER EWES: Utility and Good 22.00-45.00; Yearlings and two-year olds 35.00-50.00.

GOATS: All goats sold by the head. Large 70.00-100.00, several 100.00-160.00; few Thin 50.00-70.00. Medium 40.00-50.00; few Fleishy 50.00-60.00. Small, mainly kids, 30.00-45.00.

Lancaster Livestock Auction

Wednesday's market report has been discontinued until further notice because of insubstantial receipts.

Friend's Stockyard Inc.

Accident, Md. 21520
Report Supplied by Auction
November 15, 1993

STOCK BULLS AND STEERS (200-500 LBS.) 75.00-92.00. **STOCK HEIFERS** 65.00-82.00. **SLAUGHTER STEERS GOOD TO CHOICE** 67.00-71.85; **MEDIUM TO GOOD** 60.00-66.50; **HEAVY CHOICE OVER 1450 LBS.** 63.00-66.50. **HOLSTEIN STEERS HEAVY** 50.00-57.00; **LIGHT** 48.50-56.00. **SLAUGHTER HEIFERS GOOD TO CHOICE** 66.00-70.00; **MEDIUM TO GOOD** 60.00-65.00. **BULLS HEAVY** 52.00-62.50, **LIGHT** 50.00-57.00.

COWS FEW HIGH DRESSING 45.00-50.00; **UTILITY HOLSTEIN** 44.00-48.00, **CANNERS** 38.00-43.00, **COMMERCIAL TO GOOD** 39.00-44.50, **CULL COWS** 38.00 AND DOWN. **VEALS GOOD TO CHOICE** 70.00-85.00, **MEDIUM TO GOOD** 50.00-69.00. **BOB CALVES** 40.00 AND DOWN. **HOLSTEIN BULL CALVES, RETURN TO FARM (90-120 LBS.)** 100.00-140.00. **HOLSTEIN HEIFER CALVES, RETURN TO FARM (100-120 LBS.)** 150.00-157.00.

BEEF X CALVES, RETURN TO FARM, UP TO 110.00. **HOGS: TOP QUALITY** 42.00-43.25, **HEAVY** 43.00, **LIGHT** 37.00-42.00. **SOWS** 32.00-38.00. **MALE HOGS:** 25.00-29.00. **LAMBS:** 55.00-60.00. **FEEDER LAMBS:** 55.00-64.00. **SHEEP:** 10.00-25.00. **LIVESTOCK PRICES ARE ALL GIVEN PER HUNDREDWEIGHT!**

Indiana Livestock

Homer City, PA
Thursday, Nov. 28, 1993
Report supplied by Auction

BEEF: HEIFERS GOOD 72.50, **MEDIUM** 68.00-71.50; **COMMON** 67.00. **DOWN. STEERS: GOOD** 75.00, **MEDIUM** 72.50-73.00, **COMMON** 71.00-DOWN. **COWS: GOOD** 51.50, **MEDIUM** 46.50-49.00, **COMMON** 40.00-45.00. **BULLS: BUTCHER** 58.50, **BOLOGNA** 52.50-57.00. **FEEDERS: GOOD** 600 LBS. **COWS** 75.00, **MEDIUM** 300-400 LBS. 65.00-75.00, **COMMON** 62.00-DOWN. **CALVES:** 85-115 LBS. (BULLS) 120.00-155.00, 85-115 LBS. (HEIFERS) 130.00-175.00, 80 LBS. UNDER 70.00 DOWN, 120 LBS. OVER VEAL 250 LBS. 95.00-101.00. **LAMBS: GOOD** 74.50, **MEDIUM** 65.00-72.00, **SHEEP** 24.50. **HOGS: NO. 1** 200-240 LBS. 40.00-41.85, **NO. 2** 140-195 LBS. 35.00-37.50, 245 LBS. UP 39.00. **SOWS:** 37.50-44.50. **BOARS:** 27.50. **LITTLE PIGS:** 15.00-32.00 PER HEAD. **GOATS:** 15.00-40.00 PER HEAD.

New Holland Livestock Auction

Lancaster, Pa.
Thursday, November 18, 1993
Cattle Calves Sheep Goats

Today	1129	658	224	291
Last Thursday	1065	586	299	124
Last Year	1054	596	173	215

CATTLE: Slaughter steers steady, instances 50 lower on Select and low Choice; slaughter heifers scarce; cows 2.00-3.00 higher; bullocks not tested; bulls steady. Supply included 38% slaughter steers, 37% cows, 20% feeders, with the balance slaughter heifers and bulls.

SLAUGHTER STEERS: Choice 2-3 few 4 1075-1450 lb 69.50-72.35, few 72.50-72.85; Choice and Prime 2-4 1150-1400 lb 72.00-74.10, one lot 3-4 1520 lb 69.25; few Choice 3-4 1175-1450 lb 66.50-69.50; Select and low Choice 2-3 1075-1450 lb 65.00-68.75; few Select 1-3 1100-1325 lb 61.75-63.50.

HOLSTEINS: High Choice and Prime 2-3 1465-1690 lb 62.00-63.75; Choice 2-3 1065-1580 lb 60.75-63.00; few Select 1-3 990-1460 lb 60.00-61.00.

SLAUGHTER HEIFERS: Few Choice 2-3 1050-1250 lb 66.75-70.00; Select 2-3 975-1125 lb 63.00-66.00.

COWS: LOW DRESSING BULK HIGH DRESSING Breaking Utility & Commercial 2-3 46.50-49.50 49.50-51.00. Commercial 3-4 44.00-47.00. Cutter & Boning Utility 1-3 44.00-46.00 46.00-49.50 49.50-51.00. Canner & low Cutter 1-2 38.00-42.00 42.00-46.75.

BULLS: Yield grade 1 1300-1800 lb 61.50-65.00, six head 67.50-70.00; Yield grade 2 1100-1500 lb 57.00-61.00, few low dressing 55.00-57.00.

FEEDERS: Large # 2 1030-1300 lb Holstein Steers 56.50-57.50 and Large # 2 935-1030 lb Holstein Heifers 51.75-55.75.

CALVES: Vealers steady. Demand good for Holstein bulls and heifers to return to farm.

VEALERS: Choice 225-260 lb 87.00-90.00; high Good and low Choice 225-385 lb 67.00-80.00, 80-115 lb 50.00-62.00; Standard and low Good 65-80 lb 40.00-50.00.

RETURNED TO FARM: Bulk 90-125 lb Holstein Bulls 135.00-165.00, few 165.00-173.00; small frame 80-110 lb 90.00-135.00; bulk 90-120 lb Holstein Heifers 165.00-190.00, few 190.00-207.00; small frame 75-110 lb 130.00-165.00.

SHEEP: Slaughter lambs firm to 5.00 higher; slaughter ewes fully steady. Supply included 70% slaughter lambs with the balance slaughter ewes.

SLAUGHTER LAMBS: Choice 2-3 80-105 lb 67.00-78.00, 55-75 lb 75.00-90.00; few 35-55 lb New Crop Lambs 140.00-155.00.

SLAUGHTER EWES: Utility and Good 23.00-36.00; Yearlings and two-year olds 35.00-46.00.

GOATS: All goats sold by the head. Large 58.00-85.00, few 90.00-97.00, with five head 108.00-135.00; Medium 35.00-58.00; Small, mainly kids, 22.00-40.00.

Jersey Shore Livestock Market, Inc.

Auction every Thursday at 4:00 p.m.
Jersey Shore, Pa.
Report supplied by Auction
Thursday, Nov. 18, 1993

RETURN TO FARM CALF 90.00-170.00. **GOOD VEAL:** 70.00-130.00. **COMMON VEAL:** 30.00-85.00.

Lancaster County Weekly

Lancaster, Pa.
Friday, November 19, 1993
Cattle Calves

This Week	3150	1715
Last Week	2925	1586
Last Year	3368	1547

CATTLE: Slaughter steers mostly steady; slaughter heifers 2.00-3.00 higher; cows closed 2.00-3.00 higher; bullocks steady; bulls firm to 1.00 higher. Supply included 25% slaughter steers, 6% slaughter heifers, 28% cows, 5% bulls, with the balance feeders.

SLAUGHTER STEERS: Choice 2-3 few 4 1075-1450 lb 69.50-73.00; Choice and Prime 2-4 1100-1425 lb 72.00-74.50, couple 75.00-75.75, one lot 3-4 1520 lb 69.25; Choice 3-4 1175-1450 lb 66.50-69.50; Select and low Choice 2-3 1075-1400 lb 65.00-69.00; few Select 1-3 1050-1325 lb 61.75-64.00.

HOLSTEINS: High Choice and Prime 2-3 1200-1690 lb 62.00-65.50; Choice 2-3 1065-1700 lb 60.75-63.50; Select 1-3 990-1460 lb 59.00-61.50.

SLAUGHTER HEIFERS: Choice 2-3 950-1325 lb 66.50-71.50, one lot 848 lb 62.00; few Choice 2 1100-1315 lb 71.50-72.50; Select 2-3 950-1150 lb 61.75-66.00.

COWS: LOW DRESSING BULK HIGH DRESSING Breaking Utility & Commercial 2-3 46.00-49.50 49.50-51.00. Commercial 3-4 43.00-47.00. Cutter & Boning Utility 1-3 42.00-46.00 46.00-49.50 49.50-51.00. Canner and low Cutter 38.00-42.00 42.00-46.75.

BULLOCKS: Choice 2-3 1100-1400 lb 66.50-69.75, couple 70.00-72.75; Select 1-3 1050-1350 lb 60.50-65.00.

BULLS: Yield grade 1 1300-2000 lb 61.00-67.00, few 67.00-69.00, eight head 1330-2035 lb 70.75-77.75; Yield grade 2 1050-1600 lb 55.00-61.00, few 2000-2625 lb 52.00-57.00.

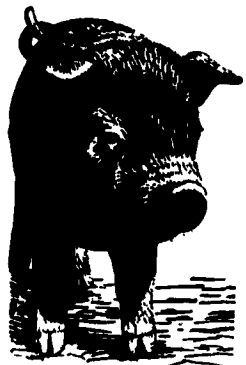
CALVES: Vealers steady; slaughter calves steady, instances 5.00 higher. Demand good for Holstein bulls and heifers to return to farm.

VEALERS: Choice 223-350 lb 87.00-100.00; high Good and low Choice 155-385 lb 65.00-85.00, 75-115 lb 52.00-62.00; Standard and low Good 70-85 lb 40.00-50.00, couple lots 55-65 lb 23.00-30.00.

SLAUGHTER CALVES: Good and Choice 300-550 lb 60.00-75.00, few Choice 75.00-80.00.

RETURNED TO FARM: Bulk 90-125 lb Holstein bulls 130.00-165.00, few 165.00-173.00; small frame 90-110 lb 90.00-140.00, with around 50 head 70-75 lb 52.00-60.00. Bulk 90-120 lb Holstein heifers 165.00-207.00, around 30 head 207.00-214.00; small frame 75-110 lb 120.00-165.00.

CHOICE STEERS: 68.00-73.00. **SELECT STEERS:** 62.00-68.00. **COMMON STEERS:** 53.00-62.00. **COMMERCIAL COWS:** 43.00-51.00. **CANNERS-CUTTERS:** 42.00-49.50. **SHELLS:** 32.00-39.00. **CHOICE HEIFERS:** 67.00-70.50. **SELECT HEIFERS:** 60.50-67.00. **COMMON HEIFERS:** 54.00-58.00. **GOOD FEEDERS:** 65.00-83.00. **COMMON FEEDERS:** 45.00-60.00. **BULLS:** 45.00-61.50. **GOOD HOGS:** 37.50-41.00. **SOWS:** 32.00-36.50.



B&R CATTLE CO.
RD 1, Marietta, PA
17547
Office Phone:
(717) 653-8164

Specializing in
Stockers &
Feeders

JOHN BOWMAN
Ph. (717) 653-5728
RON RANCK
Ph. (717) 656-9849

HAY, STRAW & CORN
— SALE —
Please Note New Sale Time!
Starting Jan. 3
Sale Starts 10 AM
Every Friday At 10 AM

GREEN DRAGON MARKET & AUCTION
RD No. 4 Ephrata, Pa. 717-738-1117
1 mile North of Ephrata on N. State St.
Out of State Buyers - Cash or Certified Check Only



LEBANON VALLEY LIVESTOCK MARKET, INC.

1 mile East of
Fredericksburg
along Rt. 22

PHONE
JONESTOWN
865-2881

Flea Market Auction
every Tuesday at 12:30,
Tools, Eggs, Produce,
etc.
Buyers & Sellers
Welcome

Green Dragon Livestock Sales



Location: 1 mile N.
on North State St.,
Ephrata.

SALE EVERY FRIDAY

11:00 A.M. - Beef
6:00 P.M. - Small Animal Sale

Office 717-733-2444
Home 717-838-4318
WALTER H. RISSER,
Proprietor

VINTAGE SALES STABLES, INC.

SALE TUESDAYS

10:30 A.M.

SLAUGHTER CATTLE AUCTION —
STEERS, BULLS, HEIFERS,
COWS, FEEDER CATTLE

7:30 P.M.

CALVES, SHEEP, GOATS
* GET CALVES IN EARLY —
OUR STATE GRADER
STARTS AT 1:00 P.M.

Selling Feeders Every Tuesday
At Approx. 2 PM

FOR MORE INFORMATION CONTACT:

L. ROBERT FRAME, SR., PRESIDENT
BUS (717) 442-4181 BUS (717) 768-8204
HOME (215) 458-8518
IRWIN MARTIN, FIELD REP.
(717) 733-7434
KENNETH E. HERSHEY, FIELD REP.
(717) 442-4874

TRUCKING SERVICE
AVAIL.-LOCAL &
LONG DISTANCE
(RT. 30, 10 MILES EAST