

THANKSGIVING WEEK
NOVEMBER 27 ISSUE

CLASSIFIED DEADLINES
TUESDAY - NOV. 23
5 PM



1992 Ford
7740 SLE
 Cab air, 4WD,
 16 x 16 trans.,
 580 hours,
 like new.
(703) 828-3172

All Steel Frame
Hay Wagon, 8x18
All Sizes, Steel
Hay Feeders
24' Feeder On
Whls.
Self Locking Panels

J & L EQUIPMENT
St. Thomas, PA
717-369-2637

Take Exit 20B
 Off Of 183, 5 1/2 MI. West
 To Belmont Farm.

JD 60
\$1,900

410-833-9091

Close Out Offer

Pull type bale
wrappers

Reasonable Prices

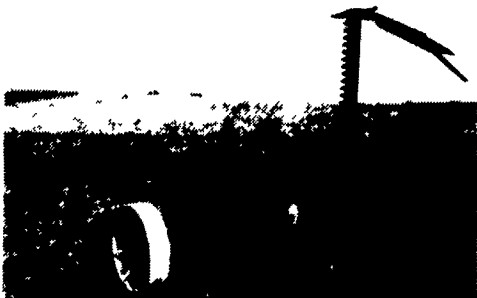
410/658-6319
 evenings

215/593-1199
 leave message

The I & J Cultivator



CULTIVATORS: 3 point or horse drawn available in 1-2-3- or 4 rows can be used as a field cultivator with a few attachments. Great for vegetables. We can custom build. Options: rolling shields, disc hillers, liquid side dressers, row tracking system.

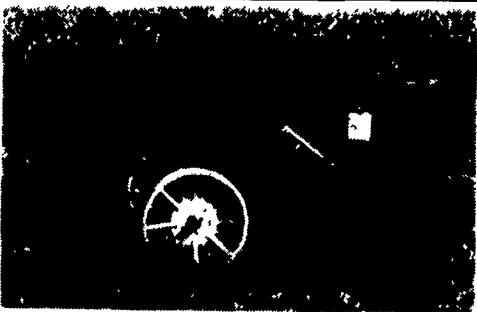


MOWERS: 3 point or trailing features: guards & blade, move back and forth cuts like a scissors, virtually no plugging.

10% OFF ALL CULTIVATORS
BOUGHT UP TO 11-30-93



RAKES: available in ground drive or PTO steel wheels or rubber tires Features: forms a very fluffy windrow, can also be used as a windrow inverter. Does not rope hay. A real leaf saver.



DEEP TILL SLITTER: Available in 1 or 2 shanks, optional hydraulics. On Sale Now

Corn binders: get your orders in by June 1, 1994

We Also Carry Flex Tine Harrows

I & J MANUFACTURING

Dept. LF, 5302 Amish Road • Gap, PA 17527

717-442-9451

(Call Between 8:45-9:00 A.M. Weekday Ask For Jake)

INVESTMENT TRACTORS
FOR SALE



1950 MH 55 Diesel, Good Tin, Stuck
\$1,700

- 56 Ferg 35 New (0 Hours) Not Redone- Brand New!!!\$24,500
- 75 IH 1568 Cab- Fair Runner\$5,900
- 54 IH S-H Last Year Super H In Restorable Condition\$1,900
- 57 JD 320S 3 Pt.- Clean Original- Above Average\$6,900
- 57 JD 320U Clean 1 Owner- Fair Repaint- Easy Restore\$6,500
- 59 JD 330S Runs Good- Nicely Redone- Good Tag\$10,500
- 56 JD 420HC High Crop- Runs- Needs Restored\$3,400
- 58 JD 420U Needs Total Restoration\$1,600
- 60 JD 430W Factory PS- 5 Speed- Runs Good- Last Year\$3,900
- 60 JD 530 3 Pt- Power Steering- New Frt Tires- Redone.....\$4,900
- 57 JD 620 Try- 3 Pt.- Decent Tin- Rare All Fuel.....\$3,500
- 57 JD 620S Standard- Nicely Redone- Well Above Average\$5,900
- 58 JD 720 Pony- WF- 3 Pt.- Runs OK- Untouched\$4,100
- 57 JD 720S Pony- Standard- Good Tin- Stuck.....\$2,350
- 59 JD 730 DE- WF- 3 Pt- Fenders- Good Tin- Runs Fair\$3,900
- 59 JD 730S Pony- Standard- Nicely Redone\$5,900
- 55 JD 80 Off Farm Condition- Fair Tires- Good Tin.....\$4,700
- 57 JD 820 Pony- PTO- Needs Restored- As Is\$2,600
- 58 JD 820 Runs- No Pony- Poor Tires- Fair To Good Tin.....\$2,900
- 58 JD 820 Pony- PTO- Clean Untouched Tractor.....\$4,900
- 59 JD 830 Pony- Poor Tires- Good Tin- Runs.....\$4,900
- 59 JD 830 PTO- 2 Remotes- Overhauled Engine- Redone\$8,500
- 59 JD 830 DE- Overhauled- 80% Tires- Good Tin Redone\$8,900
- 36 JD A Unstyled- Runs Good- Easy Restore- Good Tin.....\$2,700
- 35 JD A Unstyled- Good Tires & Tin- Decent Paint\$3,100
- 37 JD A Unstyled- Factory Steel- Runs Good.....\$3,200
- 36 JD A Unstyled- Factory Round- Runs Good.....\$3,500
- 51 JD AO Runs- PTO- Needs Restored- No Orchard Dress.....\$1,600
- 51 JD AR Styled- Nicely Painted- New Rear Tires.....\$4,900
- 50 JD AW WF- Fenders- Clean- \$2000 Engine Work Done.....\$3,900
- 38 JD B Unstyled- New Paint- Spokes- Runs Good.....\$3,200
- 37 JD B Unstyled- New Rear Tires- Decent Paint.....\$3,500
- 37 JD B Unstyled- Spokes- Nicely Redone- GD Tin\$4,200
- 41 JD D Styled- Hand Start- Good Tin- Decent.....\$2,700
- 39 JD D Styled- PTO- Front Spokes- Decent.....\$2,700
- 49 JD D Styled- Runs- As Received\$2,700
- 50 JD G Try- Decent Tin- Runs Good- Needs Paint.....\$2,700
- 51 JD G Runs- As Received\$2,900
- 48 JD G Good Tin- Runs Good- New Tires- Nicely Redone....\$4,650
- 38 JD G Unstyled- Good Tin- Runs Good\$5,200
- 41 JD G Unstyled- Last Full Year Of Prod.- Nice Unit.....\$5,300
- 51 JD GW WF.....Coming In
- 50 JD M Good Tires- Fair Tin- Runs Good- To Restore.....\$1,500
- 51 JD MT Clean Tin- Runs- Needs Restored- As Received.....\$1,300
- 49 JD MT Fenders- Weights- Fair Tin- To Restore- Runs\$1,700
- 50 JD MT Widefront- Runs- To Restore\$1,900
- 52 JD RComing In
- 54 JD R Last Year- Good Tin- PTO- Hydraulics- Stuck\$2,600
- 53 JD R Runs- Needs Restored.....\$3,400
- 51 JD R Overhauled- Good Tin- Repainted- Good Cond.....\$4,900
- 63 MF 97 4x4- Cab- Runs- Good Tires- Good Tin.....\$4,900
- 61? MF 98 GM Diesel- Runs Good- Thin Paint.....\$4,500
- 60? MF 98 GM Diesel- Good Running Tractor- Thin Paint.....\$5,000
- 50 MH 55 Diesel- Standard- Good Tin- Stuck.....\$1,700
- 52 MH 55 Diesel- Standard- PS- PTO- Good Tin- Stuck.....\$1,900
- 53 OL 66 Widefront- Fenders- Nice Tin- 2 Remotes\$1,800
- 57 OL 880 Diesel- Standard- New Tires- Very Nice.....\$4,900
- 60 OL 990 GM Dsl- Poor Tires- Good Tin- Runs Good.....\$4,900

I Will Buy Clean Or Odd John Deere's. Buy-Sell-Trade.
Lots Of Older Sales Literature, Toys And Pedal Tractors For Sale.
Lots Of Owners Manuals/Parts Book — Call.

LLOYD WENGER

251 S. Race St., Myerstown, Pa. 17067
 717-866-2130 Days 717-866-7147 Evenings

EDWIN HORNING & SONS
FARM MACHINERY

248 Meadow Valley Road, Ephrata, PA 17522

(717) 733-7408



Public Sale
 2-22-94
 Watch for Listing

TRACTORS

- II: 826 diesel, new TA, new engine rebuilt, nice\$7,900
- JD 2640 diesel, late model, Indp. PTO\$10,800
- JD 4430 diesel, cab, air, PS\$14,500
- JD 2350 diesel, hi-low, Indep. PTO....\$10,800
- Deutz 6807, 68 HP, 3500 hrs., 1982 model\$6,850
- Cockshutt 550 Gas\$3,200
- JD 650 diesel w/belly mower, very nice, 1100 hrs.\$5,200

MISC. EQUIP.

- M&W gravity bin w/gear.....\$950
- Case-Davis 3 pt. backhoe.....\$1,950
- AC-KL238 combine, 2R snapper head, nice\$650
- Tallgate For NI 363 Manure Spreader.....\$125

CORN PICKERS

- NI 323 1R\$1,000
- JD 300, 3 RN Head\$5,300
- NI 325 NR, 12 roll bed.....\$3,100
- NI 325 NR, 8 roll bed.....\$3,350
- NI 323 1R\$1,950
- (2) NI 324 WR pickers, 12 roll beds, late model, nice\$3,200-\$3,500
- NI 323\$1,750

TILLAGE EQUIPMENT

- JD 900 5 shank, V ripper.....\$1,575
- JD 1000 3b plow.....CALL
- Bush Hog 10T chisel, 3 pt.....\$1,225
- Brillion 10T chisel.....\$1,325
- Hutch Master, 12' tillage disc\$3,250
- Krause 12' offset disc\$3,400
- Case IH 5100 Grain Drill 18x7 dd, soybean special\$2,800
- IH 510 Grain Drill, 21x7 late model, marker gauge, nice\$2,200
- AC 14' field cultivator, pull type.....\$1,050

HAY EQUIPMENT

- Case IH 3309 discbine, nice.....\$6,900
- Deutz Allis SM70RC, 9' discbine.....\$3,600
- NH 489 haybine.....\$3,750
- JD 1219 mower conditioner\$4,100
- NH 256 rakeSOLD.....\$1,850
- NH 315 baler w/70 thrower.....\$3,500
- NH 1495 self-propelled haybine, hydro., gas\$7,300
- NH 479 haybine.....\$1,575
- Hesston 1071, 7' haybine\$1,750
- NH 488 haybine, 9'\$1,850
- NH 276 baler w/thrower\$2,800
- NH 315 baler w/chute\$2,400
- NH 283 baler w/chute\$1,500
- NH 310 baler w/chute\$2,200
- Agri Link Bale Basket\$1,800
- Hesston 4600 In-Line Baler\$2,200

FORAGE EQUIP.

- Gehl 960 forage wagon, 3 beater, roof, tandem gear, nice\$4,500
- Dion forage wagon, 3 beater, roof\$1,250
- NH 782 harvester, elect. controls, metal alert base unit, nice.....\$4,900
- NH 27 blower\$425
- JD 3940 harvester, base unitCALL
- NH 900 Harvester, elec. controls w/3 RN low profile corn head\$10,500
- or base unit w/824 head\$9,500
- Gehl 1580 blower, 1000 RPM\$950
- NH 40 Blower, 1000 RPM.....\$1,850