

Top Pennsylvania DHIA Herds By County For October

(Continued from Page C15)

WAYNE

RICHFIELD FARMS	B3	84.4	22660	0	710	3.1	702	3.1
JAMES SLOCUM	3	25.6	20518	0	773	3.8	688	3.4
KEVIN BURLAIGH	3	45.0	21077	0	797	3.8	683	3.2
HIGHLAND FARMS	3	71.9	21471	0	735	3.4	675	3.1
DALE WOROBEY	3	40.4	19739	0	773	3.9	666	3.4
DAVE NOBLE	B3	46.1	21106	0	814	3.9	664	3.1
AL MAR FARM	B3	37.3	20592	0	755	3.7	661	3.2
ARTHUR RUTLEDGE	G3	49.2	20502	0	710	3.5	650	3.2
JERICHO DAIRY	3	50.5	20005	0	733	3.7	648	3.2
GARY FIELDING	3	41.1	20761	0	749	3.6	648	3.1
ALLAN SCHNAKENBERG	B3	60.8	19195	0	691	3.6	635	3.3
CLEARFIELD FARMS	3	117.7	19672	0	718	3.6	630	3.2
CARL SHEPSTONE	G3	60.5	19615	0	702	3.6	626	3.2
RONALD J MAYESKI	B3	24.8	19138	0	574	3.0	625	3.3

WESTMORELAND

HARRY R MARKER	3	72.5	23623	0	782	3.3	763	3.2
JAMES E MC QUAIDE	3	62.3	21989	0	822	3.7	698	3.2
JOHN & ROBERT GRAHAM	B3	53.3	22088	0	734	3.3	688	3.1
CATALINA DAIRY	B3	158.0	20661	0	761	3.7	667	3.2
ADAM S & JANICE DERR	B3	82.8	20855	0	748	3.6	662	3.2
OVERLEA FARMS	3	119.5	19895	0	670	3.4	658	3.3
KEITH C WALTERS	B3	50.4	20967	0	765	3.6	647	3.1
KATHY&ALVIN VANCE JR	3	26.0	19909	0	752	3.8	639	3.2
WILLIAM BUTTERNORE	3	42.3	20720	0	695	3.4	635	3.1
JAMES D ROUGH	B3	70.2	19651	0	664	3.4	629	3.2
BILL & RICK EBERT	B3	68.8	18920	0	708	3.7	619	3.3
ROBERT M FINK JR	B3	42.1	19225	0	681	3.5	612	3.2
RICHARD G STONER	B3	63.4	18748	0	638	3.4	600	3.2
GREEN HILL FARMS	B3	40.9	19528	0	702	3.6	600	3.1
RICHARD LOVE	B8	52.0	18283	0	656	3.6	594	3.2

WYOMING

DA VUE HOLSTEINS	3	44.1	23590	0	860	3.6	751	3.2
WAYNE-ROGER SHERWOOD	3	66.5	22653	0	858	3.8	738	3.3
ROGER S WILLIAMS	B3	59.7	18890	0	777	4.1	646	3.4
R + W KUZMA FARM	B3	53.3	20499	0	740	3.6	645	3.1
RICHARD PLACE	3	61.0	19668	0	769	3.9	639	3.3
INSINGA HOLSTEINS	3	67.4	18512	0	666	3.6	619	3.3
JOHN CHRIST	G3	33.1	18878	0	767	4.1	616	3.3
TOM SANDS	3	58.1	19143	0	725	3.8	607	3.2
SHUPPS FARM	8	55.0	18253	0	687	3.8	601	3.3
DOOLITTLE HILL FARMS	B3	59.4	18772	0	679	3.6	599	3.2
ARROWHEAD FARM	3	30.9	18369	0	680	3.7	589	3.2
JOHN + PAM ATKINSON	B8	45.4	18321	0	637	3.5	567	3.1
PEARLSTREET	B3	58.2	17905	0	595	3.2	558	3.1
WILLIAM DUOCK JR	G3	58.3	17638	0	646	3.7	552	3.1
BROWN HILL FARM	3	91.2	17068	0	671	3.9	547	3.2

YORK

SMYSERS RICHLAWN FMS	3	73.8	26505	0	894	3.4	816	3.1
BLUE KNOLL FARMS	3	87.6	25378	0	778	3.1	810	3.2
BESHORE FARMS	3	43.3	23399	0	855	3.7	742	3.2
LYNN WOLF	3	88.1	23417	0	735	3.1	737	3.1
WALK LE HOLSTEINS	B3	79.3	23264	0	730	3.1	721	3.1
RAMSEY S COOPER JR	3	72.0	23587	0	856	3.6	715	3.0
WILLIAM MYERS	G3	47.9	22751	0	941	4.1	714	3.1
LEONARD GREEK	3	47.8	22151	0	754	3.4	712	3.2
RUTTERS	B3	43.8	22383	0	863	3.9	706	3.2
B ROBERT CHARLES	3	45.3	22994	0	798	3.5	703	3.1
R R & M R STEWART	3	58.9	22226	0	626	2.8	688	3.1
MELVIN R LEHR	B3	57.3	22063	0	723	3.3	686	3.1
FURNACE CREEK FARM	3	131.9	22217	0	714	3.2	685	3.1
SINKING SPRING FMINC	3	61.9	22189	0	764	3.4	684	3.1
THOMAS A BOYER	3	42.0	21563	0	747	3.5	682	3.2

Dupont Introduces Herbicide Stewardship Program

WILMINGTON, Del. — DuPont Agricultural Products has announced a new stewardship program, called "Working With The Best," for its "Extrazine" II corn herbicides and its "Bladex" corn and cotton herbicides for the 1994 use season.

A number of voluntary changes have been made in the labels of both products. These involve maximum rates and requirements for correct use and application.

"What we basically are doing," said Deborah Freerksen, triazines stewardship manager, "is introducing a number of best management practices that will enable farmers to better protect the environment and ensure the continued

availability of these highly effective, economical crop production tools."

DuPont is putting the finishing touches on an extensive program aimed at working with farmers, DuPont authorized retailers, and applicators. This program, "Working With The Best," will be introduced during the next few months.

"We're committed," Freerksen said, "to working in partnership with our customers and others to

make this stewardship effort successful and to provide tools which help farmers manage the profitability of their operations."

DuPont also is working with many state corn growers associations and their members, the Soil Conservation Service, and state and local farm organizations to develop broad understanding of

the best management practices.

These practices are similar to the use modifications for atrazine products that were introduced during the 1993 season.

They include maximum use rates, encouraging conservation tillage, and use of buffer strips and setbacks to protect rivers and streams, ponds and lakes, and

wells and groundwater from sediment, nutrient, and pesticide runoff.

DuPont has several research studies under way to quantify the effectiveness of the best management practices and is seeking ways to improve them as new knowledge and technology become available.

Business News



THE NEW MiraFount LIVESTOCK THERMOS

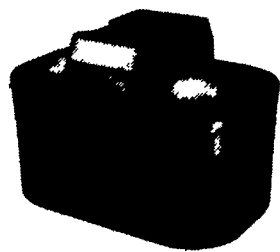
NO GAS • NO ELECTRICITY • NO FREEZING

LIKE A NATURAL SPRING IN YOUR FEEDLOT



NEW MODEL 3310
6 Gallon Capacity

Year round waterer for all sizes of hogs. Sphere shaped on the underside of lid.



NEW MODEL 3360
23 Gallon Capacity

24"Wx36"Lx18"H w/(2) 8" drinking holes.

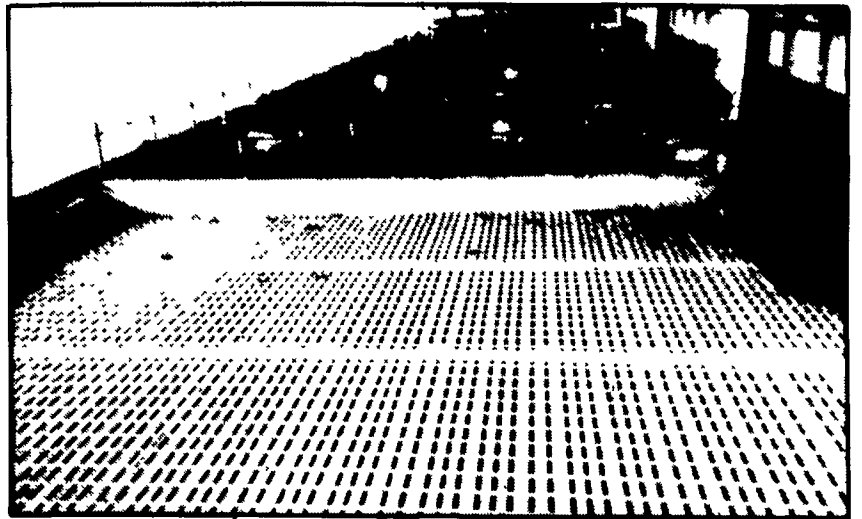
Unconditional 5 Year Guarantee

Saves 100% Of Your Utility Costs - No Electrical Wiring - No Thermostats
No Heat Elements - Easy To Install - Easy To Clean
Less Water Waste - No Lids To Be Broken Off - No Rusting
Years Of Dependable Service

AARON GROFF & SON
FARM & DAIRY STORE

103 Clearview Dr., Ephrata, PA 17522 Phone (717) 354-4631
Store Hours - Mon, Thurs. & Fri. 7 A.M. to 8 P.M.
Tues & Wed. 7 A.M. to 5 P.M.; Sat 7 A.M. to 12 Noon

• Agricultural • Commercial • Residential



Beef Operation Featuring 8' Deep Manure Storage System With Waffle Slats

- Retaining Walls • Bunker Silos
- Manure Storage, Etc.

LET OUR EXPERIENCE WORK FOR YOU-ESTABLISHED SINCE 1979!
WE ORIGINATED THE CONCRETE SYSTEM!

Sizes And Layouts To Your Specifications

We Work Hard For Customer Satisfaction!

GROFFDALE CONCRETE
WALLS
INC.

430 Concrete Ave., Leola, PA
717-656-2016

Authorized Dealer For
KEYSTONE CONCRETE PRODUCTS

- H-Bunks
- J-Bunks
- Trench Silo Walls
- Hog & Cattle Slats