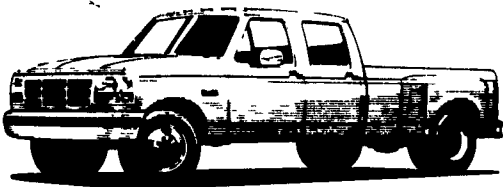


'94 FORD CREW CABS



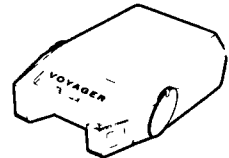
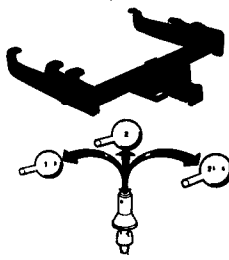
IN STOCK:

- (2) F250's
- (2) '93 Turbo Diesels (In Stock)

SHEEHY LEBANON

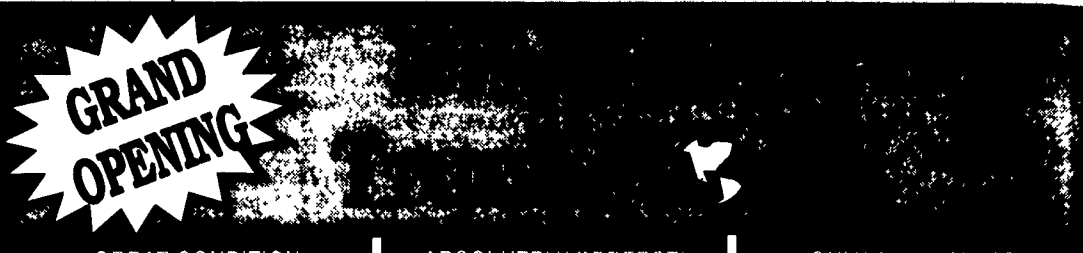
FORD • MERCURY • LINCOLN
9-9 Daily, 9-5 Saturday Sheehy Hotline (717) 272-7671 or 533-5293
20TH & CUMBERLAND STS - RT. 422 WEST

TRAILER HITCHES
Quality & Price



- ★ Free Catalog
- ★ MC/Visa/Disc
- ★ UPS Shipping

Weaver Distributing
1-800-Weaver-D
1-800-932-8373
Fax 717-865-2667



GREAT CONDITION

ABSOLUTELY PERFECT!

ONLY 61,000 MILES



88 Chev C3500 Cube Van
14' Box, 350 V8, AT, AC, Roll-Up Door, Very Clean, Only 54,000 Miles. White. #C101



92 Chev 3500 Series 10' Dump
350 5-Speed/OD, PS, PB, 21,000 Miles, Absolutely Perfect Truck, Red w/Red Interior! #C126



88 Ford XLT Dually Super Cab
460 EFI, A/C, Cruise, Power Windows & Locks, Cassette, 5 Speed, Only 61,000 Miles. Red. #F136
MUST SEE!



1985 Ford Bucket Truck
Diesel 4 sp., 33' Working Height, Utility Boxes. #F125.



1982 Chevy C10 Silverado 4x4, 6.2 Diesel
Special \$4,440



1988 GMC C2500 Sierra SLX Pkg., 350 V8, AT, 4WD, PS, PB, Stereo



AUTO BODY & SALES

1701 B Division Hwy
New Holland, PA • 717-355-0644

Specializing in Rebuilt Collision Damage Vehicles



'89 CHEVY SILVERADO LONG BOX.
350, AT, PS, PB, AC, T.H. Cruise, Cass., 37,000 Mi., Needs left 3/4 front & left hand bed side repair
\$4,650



'89 FORD F-250
5.8 FI Auto., PS, PB, 64,000 Mi., Light Front Damage, Bed Rough, 8600 GVW
\$2,850



'92 CHEVY S-10 TAHOE
2.8 FI, 5 Spd., PS, PB, Long Bed, 24,000 Mi., Light Front Damage, Rt. Hand Bed Side, Factory Blade
\$3,900

NEW DIESELS!



1994 F-250 7.3 Turbo Diesel, 5 Spd., w/OD, 4.10 Limited Slip Rear Axle, Trailer Towing Package, Manual Locking Hubs, Speed Control, Tilt Steering Wheel, AC, AM/FM Cassette Radio, Power Door/Locks, Emerald Green w/Grey Interior Stock #6763.



1994 F-350 SC 4x3, 7.3L Turbo Diesel, Elec. 4 Spd., Auto, XLT, 4.10 Limited Slip Rear Axle, Camper Package, Speed Control, Tilt Steering Wheel, Power Doors, Power Locks, Tucson Bronze w/Mocha Interior Stock #4520.



1994 F-450 Super Duty Chassis Cab, XL, 7.3L Diesel, 5 Spd. Manual w/OD, 5.13 Regular Rear Axle, Dark Blue w/Royal Blue Interior Stock #5945.



1994 F-450 SD Chassis Cab, XL, 7.3L Diesel V8, 5 Spd., w/OD, 5.13 Rear Axle, 137 Inch WB, Red w/Grey, Vinyl Interior Stock #7838



1994 F-250 4x4 XLT 7.3L Diesel, 5 Spd., Manual w/OD, 4.10 Limited Slip Rear Axle, Trailer Towing Package, Manual Locking Hubs, Sliding Rear Window, AC, AM/FM Cassette Radio, Power Door/Locks, Crimson Red w/Grey Cloth Interior Stock #9436.



1994 F-350 4x2 Crew Cab XLT, 7.3 L Diesel, V8, Elec. 4 Spd., Automatic, 4.10 Rear Axle, Camper Package, AC, Speed Control, Tilt Steering Wheel, Power Door Locks/Windows, Green w/Grey Interior Stock #7825.

OUR LOWEST

"NO HASSLE PRICE"

IS MARKED ON EVERY VEHICLE... EVERY DAY... PERIOD

TRY US!



717-949-2000 **KELLER BROS.**

RD 7, Box 405
Lebanon, PA
17042

Schlenker



1994 F350 Crew Cab
Turbo Diesel
In Stock
More Coming



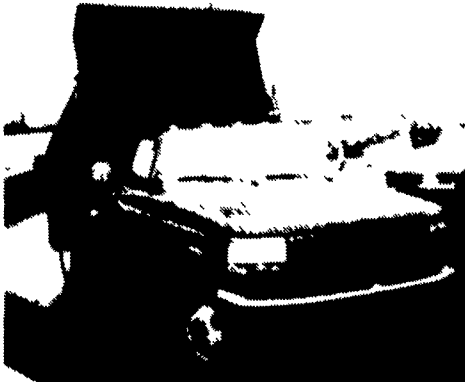
1994 350 Super Cab Diesel
In Stock!
10 Super Cabs Available

FORDS COST LESS IN HAMBURG

SCHLENKER MOTORS
562-7577
1-800-762-1822

Over 75 New Trucks (4x4) and Vans Available

Special Financing and Commercial Account Programs



1994 F350 Dump Truck
460 V8, 5-Spd.
Ready To Haul



1993 E150 Conversion Van
V8, AT, Raised Roof
Special Closeout!
Save Over \$5,000

50+ Used Trucks & 4x4's Available

Schlenker



Doing Ordinary Things Extraordinarily Well

SINCE 1924

Berks County's Oldest Ford Dealer

HOTLINE 215-562-7577 Or 1-800-762-1822

Route 61, Hamburg 15 Min. North Of Reading 20 Min. South Of Pottsville