

1982 Chevy Dump/Bulk Feed Truck, Single Axle, 26,000 GVW, Runs Good, 73,000 Original Miles, \$5000. (717)899-6772.

1982 Dodge D150 pickup, 6 cyl., auto, PS, PB, cruise, AM/FM, new inspection, 72,000 original miles, \$2750. 717-367-3612 after 5PM.

1984 Iveco Z-110, mechanic special. 717-672-9890.

1986 F350 flatbed truck w/ tool boxes, \$4500; 24' International gooseneck trailer, 12,000 GVW, \$1950. 717/436-5017, 717/436-9728.

1987 Ford F-8000, New Cat 3208T and Clutch, 33,000 GVW, 24' Van w/ Lift Gate \$15,900. After 6PM (717)668-0119 Contact Darryl.

1988 F250, 72,000, 351 EFI, 5 sp, AM/FM, PS/PB, S R W, cloth seat, dual tanks, good work truck, runs excellent 717/833-5937

1988 Ford Bronco, full size Eddie Bauer, 4WD, 302 auto., 96,000 miles, clean, \$7000. 301/694-9462.

'67 F-950 Ford, 22' dump, tandem, \$4,250. '69 Int. 1700, 18' dump, \$3,750. (301)894-8624.

'70 Mack R600 w/wetline, \$4000; 26' Fruehauf dump trailer, \$5500. Lanco. 717-396-9718.

'76 Ford tri-axle LN9000, 16' aluminum dump, 6-71 Detroit, 7-9 p.m. (814)422-8984.

1988 Mack w/new 18' Omaha grain bed and 20 ton double cylinder Harsh hoist, 33,000 GVW air brakes, A-1 condition, \$17,500. 717-867-5633.

1990 Ford F-150 4X4 XLT Lariat, All Options, V-8, Excellent Condition. (717)776-5896 After 5PM.

2 Possum-belly cattle trailers, reasonable, sell 1 or all. 410-358-0412.

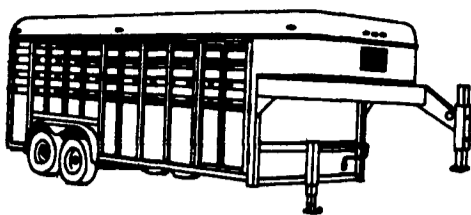
INTERNATIONAL 6X6 DUMP TRUCKS



Front Winch, PS, Air Brakes, 1100/20 Tires. Continental 6 cyl. engine. LIKE NEW 600-6,000 Miles. GVWR 57,366. Excellent for off road heavy duty cargo transporting with their all wheel drive and ability to climb a maximum grade of 70 degrees. A must for every farmer. \$9,450 each.

(814) 834-1018 St. Marys, PA

**SAVE \$600.00
On Selected Moritz
Gooseneck Livestock Trailers**



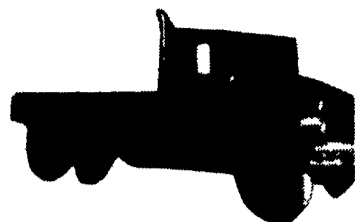
6' wide x 7' high x 16' long. \$3,995
7' wide x 7' high x 16' long. \$4,270
Whether you are Hauling Horses, Cattle, Hogs or Sheep! Now is The Time To Buy A Gooseneck Livestock Trailer

- A Limited Time Offer -
Don't Wait - Buy From Stock
Or Order Yours NOW!

Call For More Details and Specs.



**Hostetler Truck
Bodies & Trailers**
Rt. 322 Milroy, PA 17063
(717) 667-3921



**1952 G.M.C.
2 1/2 Ton Army**
Good Shape, 30,000 Orig. Mi.;
Less Than 2000 Mi. On New Short
Block; 6 Cyl. Gas; 4 Sp. Auto With
Hi-Lo Range and Shift Kit; 10 Wheel
Drive; Sealed Bid Opening In
January.

Call Tom At Haycock Twp.
(215) 536-3641

**FIVE STAR
GMC TRUCK, INC.**
Dunham Drive,
Dunmore, PA 18512
(717) 346-1701



1989 IH DT466 215 HP, 7 Spd.
Trans, Air Brakes, 14 Ft. Flatbed
Dump, 64,000 Miles, Like New
26,000 & 29,000 GVW
\$23,500



1989 IH DT466 -215 HP, 7 Spd.
Trans., Air Brakes, 11 Ft. Steel Dump,
63,000 Miles, Like New, 29,000 GVW
\$22,900

(800) 533-3837

YOUR DIRECT LINE TO GENUINE GM PARTS

When you call the number listed above you'll reach our wholesale parts specialists, who can help you keep your GM repair work moving quickly. Ask About:

- Specializing in GM Medium Duty Trucks, Current and Obsolete.
- \$500,000 Parts Inventory
- Parts Locator For Those Hard To Find Items
- We Ship Anywhere. Local Delivery Available.
- Experienced, Knowledgeable Personnel.

LEFEVER BROS.
DILLSBURG

(717) 432-9697

Quality Dealer Since 1921
406 U.S. Route 15 • Dillsburg, PA 17019



Mr. Goodwrench

**16' GOOSENECK
GRAIN DUMP TRAILER**



(trailer not the one pictured)

Hillsboro Tandem Dual Trailer Frame,
10 ton GVW,
Electric Brakes,
Heavy Duty Drop Leg Jack,
8'x8' Deck over Gooseneck

Knapheide 16' Grain Body and Hoist,
Smooth Steel Floor
40" Removable Grain Sides,
Double Acting Tailgate
Fitted Grain Tarp and Bows

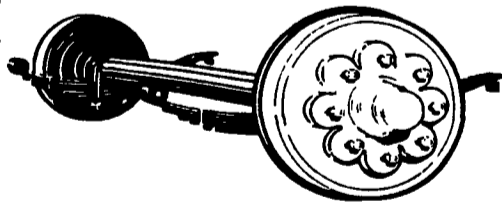
\$9,500

Get It Now, Because It Won't Last Long



**Hostetler Truck
Bodies & Trailers**
Rt. 322 Milroy, PA 17063
(717) 667-3921

**SEE US FOR YOUR
AXLE REPLACEMENT
PARTS AND COMPLETE
AXLE ASSEMBLIES**



2,000-22,500 Lb. Axles & Suspensions
Metal Trailer Components
Lights & Electrical Supplies
Brakes, Tires & Wheels
Jacks, Couplers & Hitches
Hardwood Accessories & Much More

Check Our Prices On
Receiver Hitches!

Buy Where The Quality Is
#1 At The Right Price -

Ask For Dean At:

**BINKLEY & HURST
BROS. INC.**

133 Rothsville Station Rd. • Litz, PA 17543
Phone: 717-626-4705

Huntingdon Equipment

Rentals Available **GOOD USED EQUIPMENT**

Huntingdon Valley, PA • 215-672-9667 • 1-800-543-3833 • Eddie

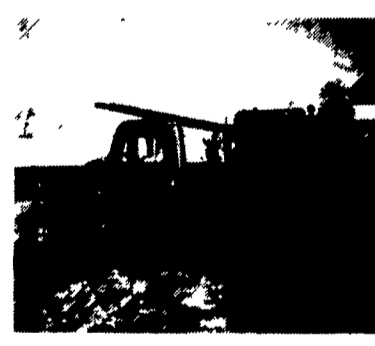
FALL CLEARANCE



20 Ton P&H Crane 3 Sec. Hyd. Boom
mounted on a 1968 F.W.D. both engine gas (new front 89), fleet maintenance. Reduced! \$11,000



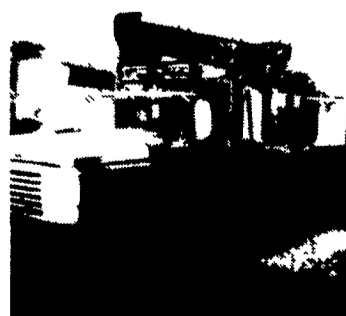
Dump Truck 71 GMC Fleet Maintain
with All Service Records, V8, Auto, Insp. & Job Ready.



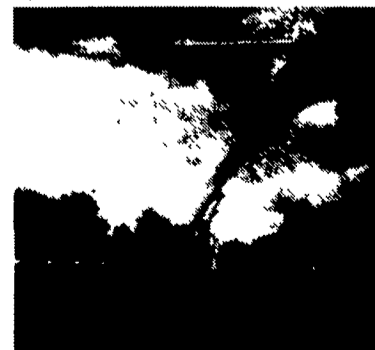
International Presser Digger This Unit is Ready To Work, Priced For Quick Sale \$9,500



Holan 70' Double Bucket 75' working
height mounted on 1981 Western Standard, 6x6 Flatbed, CAT 3208, Auto.



Need a Lift? We Have A Large Selection
Of Boom Trucks Up To 14,000 lbs. Cap. Some With Post Diggers.



Bucket Trucks 28' to 65' Gas and Diesel. Call For Details.

DIGGER DERRICKS/AERIAL BUCKETS/UTILITY EQUIPMENT