

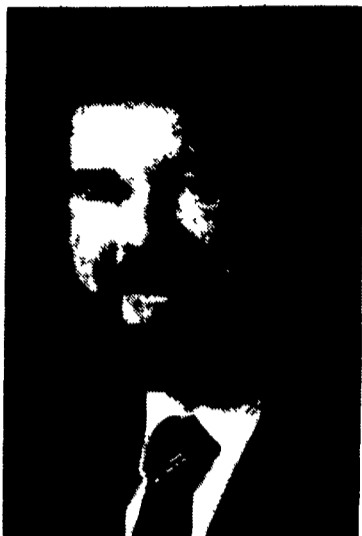
Business News

Phillips Promoted At Keystone Farm Credit

LANCASTER (Lancaster Co.) — Gerald Phillips has been promoted to senior loan officer. The promotion was announced by Lancaster Branch Manager Bruce Miller.

Phillips was raised in southern Lancaster County on his parents' dairy and tobacco farm and was graduated from Solanco High School in Quarryville. He earned a degree in dairy science from Delaware Valley College in 1972 and studied agricultural education on the graduate level at Penn State.

His diversified career includes teaching Vo-Ag at both Pequea Valley High School and Lampeter-Strasburg High School,



Gerald Phillips

herdsman at Fulton Way Farms, and crops/feed sales with Agway, Inc. Phillips joined Farm Credit in July 1978. His territory is north-eastern Lancaster County.

Phillips received the FFA Honorary Keystone Degree earlier this year. A member of the Vo-Ag Advisory Committee for the Lampeter-Strasburg High School, Phillips is vice president of the Southeast Regional Board of the Pennsylvania Council of Cooperatives, which is responsible for cooperative educational programs in southeastern Pennsylvania. He also serves as secretary-treasurer of the Lancaster County Co-op Council.

Soybean Special Combines Planter, Grain Drill Advantage

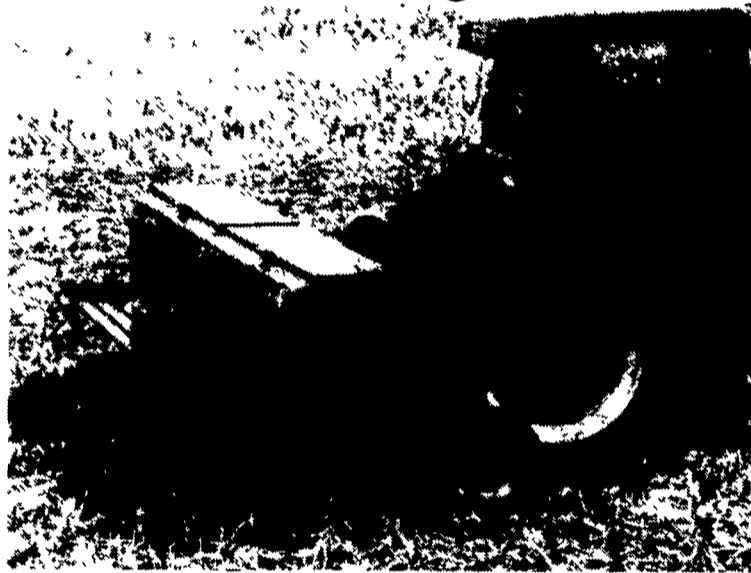
RACINE, Wis. — The Case International 5400 Soybean Special from J I Case provides many of the advantages of a planter for a price that's competitive with grain drills.

According to Kurt Schenck, Case product manager-implement, the 5400 prepares the ground for seed much like Case International planters do, but uses a grain-drill feed cup metering system.

"We developed this unit partly in response to customer demands for accommodating narrower rows for interplanting," said Schenck. The Soybean Special accommodates 15-inch row spacing.

Two 15-foot configurations with staggered row units are available - one 10-row and one 11-row, with 15-inch row spacing. Two 20-foot configurations with staggered row units are also available - one 14- and one 15-row, with 15-inch row spacing. The 11- and 15-row units solid seed 15-inch rows and have no skip-rows. The 10- and 14-row units also seed 15-inch rows but have two 26-inch skip-rows to accommodate later cultivation or chemical application.

"Another consideration in the development of the 5400 was the need for equipment that can handle high-residue conditions," Schenck said. "The unique staggered arrangement of the row



The Case International 5400 Soybean Special offers the economy of a grain drill while providing excellent soil preparation, using the field-proven row unit technology available in Case International Early Riser® planters.

units provides more clearance for surface residue to pass through the unit, which reduces plugging in heavy crop mat. For the farmer, this means no extra coulters to install for planting in reduced- or no-till conditions."

Schenck pointed out that the Soybean Special features staggered double-disk openers, front pull equalizing depth gauge wheels, and a special furrow firming point that provides a well-defined V furrow bottom. This combination provides more uniform depth control and better seed placement, es-

pecially in rough ground. "The end result with the Early Riser system is that you get excellent seed-to-soil contact for optimum germination," he said.

He noted that the Soybean Special has angled metal feed cups for metering. "These are precision molded of oxide-coated, oil-impregnated, sintered steel and won't warp or wear like the plastic cups found on competing equipment," he said.

To accommodate high-density seeding, the 5400 also features a larger seed hopper than planters. "This is important, especially with farmers getting 150,000 to 200,000 beans per acre, depending on row spacing," said Schenck.

Custom Farm Seed Introduces Corn Hybrids

MOMENCE, Ill. — Custom Farm Seed has introduced eight new waxy corn hybrids, four new dent corn hybrids, and five new soybean varieties for the 1994 growing season.

To achieve maximum yields, Custom Farm Seed encourages producers to properly select seed by matching the growing conditions of individual fields to the performance characteristics of its full line of 31 waxy corn hybrids,

31 dent corn hybrids, 16 soybean varieties, and break-thru® alfalfa.

In addition, producers can use its free variety nutrient consulting (VNC) program to make seed choices. The VNC program assists in properly selecting seed for growing conditions and offers recommendations for plant population; expected responses to side dressing; optimum OM%, phosphorous and potassium levels; use of herbicides; and preferred tillage practices.



For 1994, the collector truck model made by the Winross Corporation of Rochester, N.Y. will pay tribute to Pennsylvania's dairy industry.

The tractor trailer model is built with more than 100 parts and features the new design of the tanker back end that makes it look like a real milk pickup truck. Ford proto-type shown. Graphics will be added.

Truck Pays Dairy Tribute

HARRISBURG (Dauphin Co.) — For the fourth consecutive year, collector models are being offered to help commemorate the Pennsylvania State Farm Show. For 1994, the collector truck model made by the Winross Corporation of Rochester, N.Y. will pay tribute to Pennsylvania's dairy industry.

The tractor trailer model is built with more than 100 parts and features the new design of the tanker back end that makes it look like a real milk pickup truck.

Collectors can select either a Ford or a Kenworth cab. Both are the "long nose" or conventional type. Models will be gift-boxed and a fact sheet on Pennsylvania's dairy industry will be included.

The logo on the side of the tanker and other design suggestions were provided by workers at the Pennsylvania Dairy Promotion office in Harrisburg. Models are approved by the Pennsylvania Farm Show Commission.

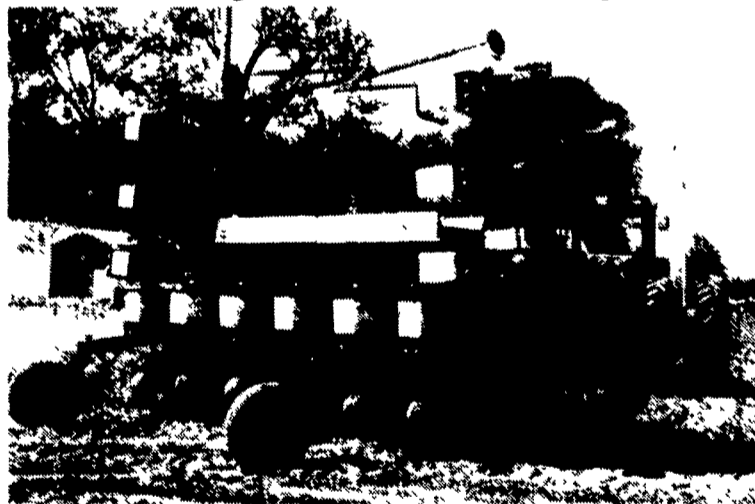
A special "Exhibitor Edition" version of the truck will be offered and it will feature a gold colored

tanker (rather than silver), plus has "Exhibitor Edition" silk screened on the cab. About 500 of these models will be made and distribution will be limited.

Exhibitors for the Farm Show in departments that require pre-entry by Nov. 4 will be receiving a special mailing in late November offering them reservation privileges for the Exhibitor Edition truck model.

About 1,500 of the regular edition trucks will be made. Final quantity depends mostly on how many are reserved. Reserved models must be picked up during the Farm Show at Harrisburg. Each day some 50 to 150 unreserved trucks will be offered for sale at the show. However, the most assured way to get one is to reserve in advance.

To get a reservation form for the Winross dairy tanker commemorating the state's 78th Farm Show as well as the state's dairy industry, send a self-addressed envelope to Pa. Farm Show Truck, P.O. Box 553, Gap, PA. 17527.



This 12-row vertical-fold Case International 950 Series planter folds to a transport width of 20 feet 6 inches. Like the front-fold planter, it is fertilizer compatible and features field-proven Case IH Cyclo Air seed system, convenient central hopper, and Early Riser row-unit technology.

Planter Models Fold Easily

RACINE, Wis. — J I Case offers the 950 Series trailing Cyclo Air® Early Riser® front- and vertical-fold planters.

According to Kurt Schenck, Case product manager-implement, the 950 Series 16-row front- and 12-row vertical-fold planter models can be folded and unfolded quickly and easily from the tractor seat.

On the 16-row front-fold planter, folding is completed by raising the toolbar to transport height and folding the wings simultaneously until they are parallel with the telescoping tongue. Transport width is 15 feet 8 inches. On the 12-row vertical-fold planter, fold-

ing is accomplished by raising the wings one at a time. Transport width is 20 feet 6 inches.

On both planters, the seed modules are free-standing units rather than part of the toolbar. This increases durability by minimizing stress factors that can affect the rotation of the seed drum. According to Schenck, the increased structural strength adds to the reliability of the unit and provides more uniform in-row spacing.

Both planters are also available with a heavy-duty, single-disk, parallel-linkage fertilizer opener, capable of operating in no-till conditions. This can be used for liquid or dry fertilizer applications.