

Public Auction Register

Closing Date Monday 5:00 P.M.
of each week's publication

WED. DEC. 15 & THURS. DEC. 16, Large Two Day Sale Of Farm Equip., Etc. At Our Sales Lot. Located 6 Miles South Of Chambersburg, Pa., One Mile East Of Marion, Just East Off Rte. 81 Along Rte. 914. Owners, Jerrold & Gloria Oaks. Marion Auction Service, 5174 Horst Rd., Chambersburg, Pa. 17201.

SAT. DEC. 18 - 9AM, 2 Day Tunis Bros. Bankruptcy Auction. Located Take Kennett Square Exit Off Of Rt. #1. Go East To Kennett Square To First Light Turn Right. Next Light Turn Left. Go One Block At Next Light Turn Left. Second Place On Right. Watch For Signs. Wolgemuth Auction Service.

SAT. DEC. 18 - 1PM 37 Acre Limestone Hog Farm. Located At 1645 Weaverland Rd., East Earl Twp., Lanc. Co., Pa. From Blue Bell Take Rt. 23 East 1 1/2

Miles, Turn Left Onto Rt. 625 North, Proceed Approx. 1 Mile To Weaverland Rd., Turn Right, Go 1 1/2 Miles To Sale On Left. Owners, Luke H. And Edna W. Zeiset. Nevin Martin & Sons, aucts.

FRI. DEC. 31 - 1:30PM, State Graded Feeder Pig Sale. Located At Carlisle Livestock Market, Inc., Exit 12, South Off I-81, Left Onto Alexander Spring Road. 717-249-4511.

JANUARY

SAT. JAN. 1 - 9AM, Farm Equipment, Household Goods. Location: From Ephrata Take Rt. 322 West Turn Right On Durlach Rd. To 301 Durlach Rd. Auction By, Clarence Hoover And Mrs. Paul E. Martin. Aaron E. Martin, Auct.

WED. JAN. 5 - 11AM, (Blizzard Date Mon. Jan. 10). Complete Farm Dispersal Selling Cattle, Barn Equip., Produce & Machinery. Located South Dansville, New York. Owned By The Merle Wyant Family. Pirrung Aucts. Inc., Wayland, New York. 716-728-2520.

SAT. JAN. 8 - 10AM Consignment Sale Located at Hightstown Produce Auction, Rt. 33, 2 miles east of turnpike exchange #8. Alfred's Auction Inc.

FRI. JAN. 14 - 1:30PM, State Graded Feeder Pig

Dairy and Livestock Sales

Lantz, Beechdale Rd., Bird-In-Hand. Harry H. Bachman, Auct.

SAT. JAN. 29 - 9AM, Farm Machinery & Some Household Articles. L. Alfred & Joan L. Weller, 11312 Johnstons Lane, Mercersburg, Pa. Franklin Co. Edgar J. Stull & J. Lester Egolf, Aucts.

SAT. JAN. 29 - 10AM Work horses and farm equip. Located in Chester Co., 4 miles S. of Cochranville, Pa. along Homeville Rd. Owner: Abner S. Stoltzfus. J. Omar Stoltzfus and Leon Kurtz, aucts.

Sale. Located At Carlisle Livestock Market, Inc. Exit 12 South Off I-81. Left Onto Alexander Spring Road. (717) 249-4511.

FRI. JAN. 28 - 1:30PM, State Graded Feeder Pig Sale. Located At Carlisle Livestock Market, Inc. Exit 12 South Off I-81. Left Onto Alexander Spring Road. (717) 249-4511.

SAT. JAN. 29 - Mules, Farm Equipment For David

Christmas Tree Auction

Tuesday Morning, November 23, 1993

10:00 A.M.

Buffalo Valley Produce Auction

RD#3, Box 188A, Mifflinburg, Pa. (Union Co.)
Directions: From Harrisburg Take 11 & 15 North To 15 North To Lewisburg. Turn Left At Light On Rt. 45. Travel 5 Miles To Dreisbach Church Rd. Turn Left Go 1/2 Mile To Intersection Turn Right Travel 300 Yards Turn Left Auction On Right. Signs Posted.

We Will Be Selling 1,000's Of Trees In All Sizes & Varieties. Trailer Load Of Wreaths, Roping & Garland. Christmas Crafts & Produce.

If You Buy Or Sell Trees You Won't Want To Miss This Auction. This Will Be The Largest Tree Auction In The East. Plan To Spend The Day.

For More Information Call:

(717) 866-1151

Neil Courtney, Manager

AU-002651-L



WOOD'S DAIRY SALE
Tues., Nov. 23
12:30 Sharp

Selling at the Gordon Wood Sale Barn. Just off Route 287. 1 mile north of Tioga, PA; 6 miles from Lawrenceville; 11 miles from Mansfield.

From KEN STRICKLAND 12 Reg. Holsteins, NICKLSON, PA.

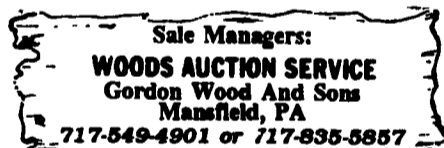
From GOR WOOD FARMS, 15 Reg. Holstein.

Selected by GORDON WOOD: Approx. 30 close & fresh cows.

* Other Consignments welcome, 1 animal or whole herd.

* Watch next weeks ad for details and full listing.

Sale Managed By:



GORDON, RON, TIM

TWO DAY COUNTRY AUCTION

FRIDAY, NOVEMBER 19 & SATURDAY, NOVEMBER 20
9:30 A.M. Each Day

VALUABLE COMMERCIAL INVESTMENT REAL ESTATE, ANTIQUES, COLLECTIBLES & HOUSEHOLD GOODS

1781 Lebanon Rd., North of Manheim In Village of Elstonville.

REAL ESTATE: Sat. 20, 11:00 A.M. 2300 sq. ft. store and showroom, nine room Victorian house, four bedrooms, 1 1/2 baths, two total electric two bedroom apartment houses, 24'x54' frame barn w/garage below. This property is a terrific opportunity for the person seeking a great investment, for details please contact auctioneer or attend the open house on Oct. 30, or Nov. 13, 1:00 P.M. - 2:30 P.M. 10% down day of auction, balance in forty five days. This property has various income producing possibilities including Bed and Breakfast and the antique trade. FRIDAY AUCTION 9:30 A.M.

FURNITURE: music cabinet, shoe store stool, vict. dresser, hanging corner cupboard, quilt rack, child's chair, stands, bookshelves, dining room suite, marble top table, cottage stand, showcase, high chair, medicine cab., desk top chest, clawfoot table, 3 tier table, wardrobe, china closet, depression vanity, TOOLS & BARN ITEMS: feed bags; garden tools, hand tools, hanging light, wheelbarrow, feed cart, bag wagon, tool box, single & double trees, sizing boxes, milk can, peep feeder, grain cradle, corn cracker, horse drawn plow, sleds, IRON & METAL: fancy floor lamps, grained cash register, McCaskey file box, rug beater, iron kettles, iron skillets, Marietta kettle, copper wash boiler, chocolate mold, tins, pitcher pump, iron trough, COLLECTIBLES: crocks, jugs, glassware, lamps, ladies balloon tire bike, basket, pictures, Holly Hobbie lunch box, what nots, salt & peppers and others.

SATURDAY AUCTION 9:30 A.M.

FURNITURE: Green ivory bedroom suite, walnut shelf clock, mission desk, tea cart, maple kitchen table & chairs, empire chest of drawers, decorated plank bottom chairs, wicker rocker, mod. dry sink, rockers, dropleaf table, parlor table, Chevelle mirror, modern hall rack, livingroom furniture, wicker set, one door cupboard, nice depression bedroom suites, nice depression diningroom suite, tea cart and others. ANTIQUES & GLASSWARE: Majolica plate, silver plated coffee set, glass basket collection, pot metal dog, iron pig bank, reverse painting on glass, pictures & frames, pocket and lapel watches, floor lamps, blue opalescent mustard & vinegar set, hand made mini furniture, cast iron doll furniture, cranberry opalescent creamer, Meadow scene Japanese china, Czechoslovakia creamer collection, Allenton plates chinese pattern, early Staffordshire mini candle holder, child's kitten dish, fine 10 place setting china set, Azalea shakers, etched glass water set, Fenton candle holders, tin plate toy cars, linens, Imperial pitcher, blue, green, amethyst carnival glass dishes, gone with the wind lamp, pie board, Weller jardiner, oil lamps, butcher bell, A.S. Red 1945 folk art oil paint "Old Mill" Civil war history, Brady war photos, 1964 Beatles poster, hand made wooden Japanese soldier doll and household goods, air conditioner. SPECIAL MENTION: 35" cloisonne vase, large brass temple size incense burner with unenameled champeuve work.

Auction for:
ALICE L. WHITE
Young & Young Attys.

E.M. Murry Associates

10 S. Broad St.
Lititz, PA 17543
Elmer Murry 626-2636
Richard Murry 626-8175
Ken Miller
Professional Auctioneers,
Appraisers and Advisors
Since 1953
AU-00648-L

Green Dragon Livestock Sales

Located 1 Mi. N. On North State St., Ephrata

Sale Every Friday

11:00 A.M. Beef

7:00 P.M. Small Animal Sale.

200-300 Stocker & Feeders Every Friday. Regular Shippers Of Northern Cattle.

WALTER H. RISSER,
Prop.

Home 717-838-4318
Office 717-733-2444

PUBLIC AUCTION 2 DAY SALE

WEDNESDAY & THURSDAY, NOV. 17th & 18th, 1993

10 A.M. ON PREMISES
MILLHURST BUSINESS PARK
MANALAPAN, N.J.

**\$378,000 WHOLESALE INVENTORY
CONSUMER ELECTRONICS**

TV'S, MICROWAVES, FAX MACHINES, CLOCK RADIOS, WALKMAN, PHONES & PHONE SYSTEMS, COPIERS

**\$255,000 INVENTORY
DESIGNER FLOOR COVERING
CARPET, WOOD, MARBLE,
CERAMIC & VINYL**

TO BE SOLD WED., NOV. 17th @ 10 A.M.:

7,000 sq commercial & residential carpet. WOOD FLOORING: 67,000 sf hardwood flooring, oak, teak, ash, 3/4" & 3/8", plank & parquet, incl. 35,000 bf 1x3 oak. MARBLE, CERAMIC & VINYL TILE: NEW INVENTORY - 200,000 porcelain, marble & granite, 12x12 to 24x24 - 8 colors, 20,000 sf ceramic & vinyl floor & wall tile to 12x12x", 500 ctns 12x12x1/8" & 3/16" vinyl comm tile, 50,000 sf Prominence 12x12 & 8x8 porcelain comm & ceramic tile.

STARTING AT 11:30 A.M.: ELECTRONICS- 148 TV's, 127 Microwaves, 55 Fax machines, 13 Copiers, 65 Clock radios, 21 Camcorders, 36 VCR's, 505 Alwa/Sharp Walkman, 53 Charmos cordless phones, 1432 Panasonic phones & phone systems, 12 Snackateria, 14 Audio cabinets. CITY ARTIFICIAL FLOWERS & XMAS ORNAMENTS.

LOTS OF ALL SIZES FOR DEALERS, DISTRIBUTORS & INDIVIDUALS

**\$80,000 VALUE - CONTENTS
HARDWARE STORE**

Locksets, Hinges, Nails, DW Screws

BUILDING MATERIALS

**\$623,000 INVENTORY
WOOD FLOORING, KITCHEN CABS,
WINDOWS, DOORS, PLUMBING**

TO BE SOLD THURSDAY, NOV. 18th @ 10 AM:

- DOORS & WINDOWS - 293 6 panel wp doors, birch, oak, so-hc, 50 bifold, rp, louver & birch, 75 sliding door insulated units, 30 interior door units, 40 ph ext wood & steel door units, 160 Andersen/Eagle windows - casements, dh, half round, etc.

MOULDINGS: 178,000 lf wp & oak mldg, clear casing, base, stop, jambs, etc.

LUMBER & PLYWOOD: 4,000 pcs oak railing & newel posts, 6,000 pcs treated spindle & rail, pre assembled - 6-13', 1,500 pcs 2x4x8 lumber, 900 pcs plywood: 1/2", 5/8", 3/4", 1,000 pcs luan 4x8x1/4", 100 all cedar storage sheds.

PLUMBING SUPPLIES: 16 vanities, 42 bathroom mirror cabinets, 112 kitchen & bath faucets, 48 s/s sinks, 10 t/s units.

PAINT: 180 gallons interior & exterior.

KITCHEN CABINETS: 424 cab sets, raised panel, oak, cherry & formica, walls & bases, all sizes, 124-12' countertops.

OTHER ITEMS: 18 ceiling fans, 66,000 sf ceiling tile & grid, recessed decorator, 80 rls fiberglass insulation, 20,800 sf cedar bevel, T & G, & shingle siding, 2,500 light fixtures, indoor/outdoor/brass/track.

TERMS: \$100 refundable deposit to register, cash or certified checks only. 25% deposit day of sale. 10% Buyer's Premium.

INSPECTION: 9 AM to 4 PM, Tuesday, Nov. 16th, 8 AM days of sale.

SALE: Rain or shine. Food service available. No children allowed.

DIRECTIONS: NJ Turnpike Exit 8, Rte. 33 East-approximately 9 miles to Millhurst Rd., make right turn, follow auction arrows.

**PETER COSTANZO
AUCTIONEERS, INC.**

Ocean Twp., NJ (908) 531-6799

PUBLIC AUCTION
Saturday, November 20, 1993

9:30 A.M.

Located 2 miles West of Lewisburg, PA, off Route 45 along Salem Church Road. Watch for signs. (Union County)

SELLING 60+ HOLSTEINS

34 Cows, mostly 1st through 3rd Calfs, 2 Registered; 28 Heifers, 2 Months to 20 Months of Age - Grades; 4 Red & White Cows and 3 Red & White Heifers; Cows projected up to 22,000 lbs. milk. Cows will be pregnancy checked and health papers provided, ABS breeding, also shots; 1 Crescendo Red Cow; Sires; Sensation, Bovaliant, Fancy Paul, South Wind, Molloy, Cabby, Melwood and Others.

MACHINERY AND MISC. ITEMS

J.D. 2140 Tractor Basic, the same as a 2750, has full cab, air and heat, and tractor is in good condition; New Idea 3626 Manure Spreader with Double Beaters, 1 1/2 Years Old; Buffalo Valley 36' Bale and Grain Elevator; I.H. 120 Dyno Balance 7' Mower; Badger Silage Blower; 2 Fuel Tanks with Hand Pumps; J.D. #95 9' Scraper Blade, Like New; J.D. 3 Bottom 16" Full Mount Plows; 1 Milk Meter; Metal Silage & Grain Carts; Dynavent 11 Hp. Bedding Chopper; 55 lb. Milker Bucket with Boumatic Flow Star Claw; Stewart Model 510 Cow Clipper, Used Very Little; 1 Wagon Load of Small Items; More machinery to be consigned by neighbors.

TENT CATALOGS AT SALE

SALE ORDER: Wagon Items, Machinery, Cattle.

OWNERS:

Ralph and Wilma Zimmerman

For Information Call: (717) 523-6545

AUCTIONEERS:

Ken E. Smith, 837-3535 • AU - 867 - L

Ray Miller, 966-0097 • AA - 2150 - L

Dennis Hassinger, 837-3159 • AU - 2689 - L