

Public Auction Register

Closing Date Monday 5:00 P.M.
of each week's publication

SAT. NOV. 27 - 9AM, Tractors, Farm & Poultry Equip., 1977 Chevy Pickup, Riding Mower & Household Goods. Located 5 Mi. NE Of Boyertown, Douglass Twp., Montgomery Co., Pa. Travel Rt. 100 Turn E. Between Bally & Boyertown Onto Hoffmansville Rd., Proceed 1.3 Mi. To Miller Rd., Turn L Continue 1/4 Mi. To Farm On L. Ordered By Carol A. Peacock, Trustee For The Trust Of Stanley C. Latshaw. Ralph W. Zettlemoyer Auction Co., Inc.

SAT. NOV. 27 - 11AM, Luta Farms Dispersal Of All Machinery & Dairy Barn Equipment. Located Bradford, (Steuben Co.), New York. Pirrung Auctions, Inc., Wayland, NY.

SAT. NOV. 27 - 11AM, Byerlawn Complete Dispersal. Located In Huntingdon County, 14 Miles West Of McAlevys Fort, Pa., Or 4 Miles East Of Alexandria, Pa., (1/2 Mile East Of Petersburg), Turn North Off Route 305, Right At Y, 1 Mile To Farm Lane. Jefferson R. Byler. Mark Glick, Auct.

SAT. NOV. 27 - 12 Noon Lykens Valley Farm Land. 6 1/2 Miles E. of Millersburg, Pa, 3 miles W. of Berrysburg, 1/2 mile N. of Route 25. Lee D. Dockey, auct.

SAT. NOV. 27 - 12 Noon, Real estate Sullivan Co. 19 acres with house and garage in Shunk, Pa. Bob, Chuck & Rich Roan, Inc., aucts.

SAT. NOV. 27 - 1PM 1 1/2 story brick dwelling, 30'x48' masonry shop, real estate. Located at 1625 Main St., Goodville (East Earl Twp), Lanc. Co., Pa. By Aaron & Verna Nolt. Horst, aucts.

SAT. NOV. 27 - 2PM, 63+ Acre Private Estate. Located 4403 Flintville Rd., Whiteford, Harford Co., Md. Rigdon Aucts.

SUN. NOV. 28 - 8AM Trexler Hardware Store. 314 Main St., East Greenville, Montgomery Co., Pa. Exit off Pa. Turnpike at Quaker-town Exit, turn right toward Pennsburg, go to 2nd traffic

light, turn right for 1 mi. Donald R. Richard, auct.
MON. NOV. 29 - 1PM 86,000 Sq. Ft. Multi Use Building, on 2 4/10 acres,

Millersburg Borough, Dauphin Co., Pa. 453 E. Pine St. thru to Chestnut & Church Sts. Just east of Rt. 147 & S. of Union St. (Rt. 209) Traiman, aucts.

MON. NOV. 29 - 5:30PM, To Be Held At Harry's Auction Winross Trucks, Eastwood Banks, Large Selection Of Hess Trucks & Lots More. Randy Stoltzfus & Richard Harry, Aucts.

PUBLIC AUCTION

Of Valuable REAL ESTATE

ON: Sat., December 11, 1993

At 1 P.M.

AT: R.D. #1 Delta, Pa. (off Route 74 take 851 East (York Rd) short distance to right on Watson Rd. to first farm on right.) The undersigned executor of the Isabel C. Anderson Estate will offer at Public Auction the following:

REAL ESTATE

106 Acre farm improved with a 2 story farm house with vinyl siding. First floor has a living room - kitchen and sun room - Second floor has 3 bedrooms and a full bath. Property also has a basement. House is heated by electric heat zoned for each room. EXTRAS: insulated - 2 porches - storm doors & windows - well water & on site septic - nice yard area w/trees & shrubbery. Out buildings include frame barn - corn barn - implement storage - etc. (recently painted). This farm has road frontage along Rte. 851 East (York Rd) - both sides of Watson Rd and Rte. 74. Ground is approx. 60 acres tillable - remainder in pasture and small amount in woodland. Property is currently in clean & green. Farm is approx. 15 miles south of Red Lion and a short distance from the Maryland Line. Property is zoned Agriculture-Residential. Property is located in York County in Peach Bottom Twp. A scenic rural setting - potential for development. TERMS: 10% down day of auction, balance in 60 days. OPEN HOUSE: Saturday, Nov. 20 & 27 from 1 P.M. to 3 P.M. or by special appt. Ph. (717) 862-3526 or auctioneers (717) 252-1656 or 252-3591.

TERMS: CASH OR APPROVED CHECK. Executor, J. KERR ANDERSON

Gilbert & Gilbert, Auctioneers
Brian L. Gilbert, Lic. #2256
Jacob A. Gilbert, Lic. #336
John D. Miller, Jr. Attorney

PUBLIC SALE

VALUABLE TRACTORS, FARM EQUIP., VEHICLES, RIDING MOWER, ANTIQUES, HOUSE ITEMS, TOOLS, MISC.

SATURDAY, NOVEMBER 20, 1993

AT 9:00 A.M.

LOCATION: Southern York Co., PA. From Rt. 124 (E. Prospect Rd.) take Manor Rd. ±0.9 mi. to sale or from Windsor Rd. take Manor Rd. North ±3 mi. to sale. Follow signs.

TRACTORS, FARM EQUIP., RIDING MOWER

Farmall H w/hyd & fair rubber, 1948 8N Ford 3 pt. & fair rubber, JD 20-blade transport disc- NICE, JD 44 14" 2-btm trailer plow, Brady 6' stalk beater, NI 12A ground dr manure spreader, JD 246 3 pt corn planter, IH 7' semimount sickle bar mower, 3 pt 7' scraper blade, 3 pt potato plow, IH cultivators, 2-wheel dump trailer w/metal bed, JD 111 riding mower w/36" cut, Gilson rototiller w/2 hp motor.

VEHICLES

1973 Dodge 3/4 ton pickup w/3 spd & V-8 eng., 1975 Plymouth Valiant w/PS, PB, AC, AT, 4 door, 6 cyl, blue.

ANTIQUES, COLLECTABLES, HOUSE ITEMS

Marsh kitchen cabinet w/flour bin, lg pine cupboard- green, oak sideboard, wardrobe, oak file cabinet, child's platform rocker, 4 plank-btm chrs, set of 6 kitchen chrs, cherry writing desk, cedar blanket chest, Victorian style sofa w/claw feet, doll's high chair & rocker, pine cabinet, oak clothes tree, 3-pc walnut BR suite, maple high chr, pine library table w/blue paint, tin lunch bucket, mixing bowls, butter churn, tin toys, bear bank, Depression, quilts, washboard, baskets, crocks, egg scale, butcher knives, hanging scale, counter scale, F H Cowden-Harrisburg, PA crock, meat hooks, meat saw, crock peepy waterers, bucksaw, wooden pulleys, adv tins, JD adv items, Eisenhart's Dairy porcelain milk bottle sign, chick crate, Fairbanks platform scale, milk can, porcelain kerosene stove w/woven, MH toy tractor- NICE, small wooden wagon w/ cast whis, flat trunk, sled, Express wagon, egg baskets, wooden barrels, Structo garbage truck, Farm Journals, tin seat, Sears chest freezer, Frigidaire elect stove, Gibson refrig/freezer, Kelvinator chest freezer, Speed Queen wringer washer, elect fans, Singer elect sew mach, dishes, pots, pans, Electrolux sweeper, much more.

TOOLS, MISC.

Carpenter & hand tools, Ryobi 10" power miter saw, Makita reciprocating saw, heavy duty bench grinder on pedestal, B&D power tools: HD skil saw, 3/8" drill, sabre saw, wood clamps, c-clamps, disc sander, hyd jacks, socket sets, planes, chisels, power plane, belt sander, bolt cutters, Wen DA sander, come-alongs, Stanley router, Sears cut off saw, 6"x15" planer w/motor, 5' belt sander, small lathe, screw jacks, Delta 10" saw w/1 hp motor, levels, hammers, saws, 2 sheets NEW wafer board, rubber tire wheelbarrow, fence stretcher, metal shelving, sprinkling cans, tree trimmer, dried walnut & poplar boards, misc lumber, horse cultiv, pitch fork, approx. 30 bale hay, approx. 30 bale wheat straw, center link, log chains, feed bags, 20' alum ladder, 40' wooden ladder, port air tank, port air comp, hyd cyl, hardware, canning jars- some blue, iron piles & much more.

INSPECTION OF ITEMS DAY BEFORE SALE.

*Tractors, farm equip, vehicles & furniture will not be sold before 12 Noon. TERMS: Cash or good approved check. Out of state buyers MUST have current bank letter of credit.

OWNERS:

IRA R. & MIRIAM A. LEHMAN

AUCTIONEERS:

Melvin Haines Lic 379L
Ralph Brenneman Lic 708L
717-757-5130, 741-1728

Refreshments served.

Not responsible for accidents

**REMINDER!!
MONTHLY TWO DAY
SALE OF**

FARM EQUIPMENT

At our place of business located 6 miles south of Chambersburg, PA 1 mi. E. of Marlon, just E. off I-81 at Marlon (Exit 4) along Rt. 914

Wednesday, November 17, 1993 -8:30 A.M.

Lawn & Garden Tractors, misc. items
Thursday, November 18, 1993 -8:30 A.M.

Misc. Items, Tires, Posts, etc.
10:00 A.M. - Farm Equipment and Tractors

New 3 pt. equipment sold daily
Hours M - F 8 - 5 Sat. 8 - 1
Closed Sunday

Next Sale - December 15, 16
Closed Nov. 25, 27-30
Marion Auction Service
Jerrold L. Jr. & Gloria Oaks

5174 Horst Rd.,
Chambersburg, PA.

717-375-4700 Lic. #AH-89-L

PUBLIC AUCTION

OF VALUABLE 19+ ACRE LEVEL FARM WITH 2 STORY HOUSE, GARAGE & MOBILE HOME

TUES., NOV. 30, 1993
4:00 P.M.

Located AT: Leike Road, Parkesburg, West Sadsbury Township, Chester County, PA. From Route 30 & Route 10 Intersections take Route 30 West approximately 1 mile, turn left on South Black Horse Road to Leike Road. Turn left to auction - watch for signs.

REAL ESTATE

House: The house is a 2 story frame building covered with aluminum siding and containing 1,714 square feet of living area. The house contains 3 or 4 bedrooms, 1 full modern bath, country kitchen w/dining area, large living room, mud room, full basement, and attic area. Oil hot air heat, gas hot water heater, on site water and sewage.

Garage: The garage is a 1 1/2 story 43'x58' masonry building with three overhead garage doors, and electric and water service available. There is a stairway to the upper level that could be improved.

Mobile Home: There is a 14'x70' mobile home also located at the property with its own well and septic system to be included in this auction.

Acreeage: The site contains 19.449 acres of land m/l, that is mostly level and tillable. There is over 1600' of public road frontage. Subdivision possibility exists.

OPEN FOR INSPECTION - Saturday, November 6 and Sunday, November 7, 2-4 PM. CALL AUCTIONEERS FOR COMPLETE BROCHURE OR PRIVATE SHOWING.

AUCTIONEER'S NOTE: This is a fine real estate offering of level land with lots of frontage. Many uses possible. This property deserves your attention. Great location close to major routes.

PAYMENT TERMS: 10% down payment day of auction - balance due by December 31, 1993. Transfer taxes paid by buyer.

BROKER PARTICIPATION: 1% fee available for registered buyers prior to November 28, 1993. Registration letter must include prospective buyers signature. Brokers call auctioneer for details.

Auction Conducted for:

ROSAMOND M. GORDON
Linda Kilg, Attorney

Auction Conducted By:

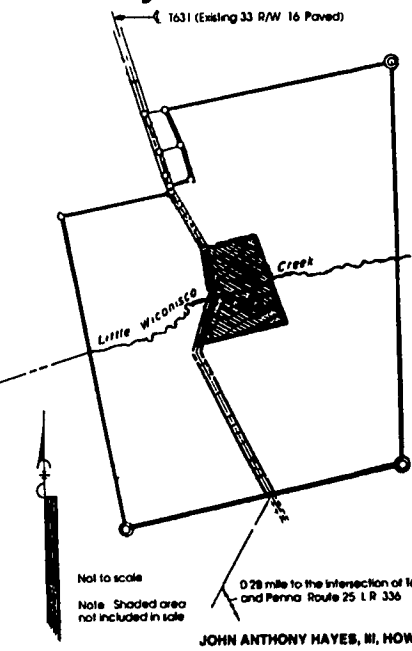


Stephen J. Barr - AU-00242-L
James S. Davis, Jr. - AU-002421-L
Gap, Pa. 17526 - (717) 442-9221

Announcements day of auction take precedence over previous advertising.



**Public Auction Of
Lykens Valley Farm Land**
Saturday November 27, 1993 12:00 Noon



LOCATION: 6-1/2 Miles East of Millersburg, PA, 3 Miles West of Berrysburg, 1/2 Mile North of Route 25. Watch for Auction Signs.

141 ACRES MORE OR LESS, WITH APPROXIMATELY 120 ACRES TILLABLE situate in Mifflin Township, Dauphin County.

For additional information or inspection phone 717-255-2125 (ask for Ronald Howard) or 717-758-6004.

TERMS: 10% DOWN. FURTHER TERMS & CONDITIONS WILL BE GIVEN AT TIME OF AUCTION.

JOHN ANTHONY HAYES, III, HOWELL C. METTE, DAUPHIN DEPOSIT BANK & TRUST CO., CO-EXECUTORS FOR PAUL A. TROUTMAN, T/W

HOWELL C. METTE, ATTORNEY
AUCTIONEERS: DOCKEY #AU229L, DOCKEY-ROMBERGER #AU1683L & DEPPEN #AU1967L