

New-England Shell Eggs

Wednesday, November 10, 1993
NEW ENGLAND: Prices were unchanged. Trade sentiment was mostly steady. Demand continued to improve as distributors prepared for the upcoming Thanksgiving holiday. Supplies were usually clearing well with most dealers able to procure additional needs without too much difficulty.

PRICES PAID TO PRODUCERS, CASES EXCHANGED, GRADE YIELD BASIS, BROWN EGGS LOOSE, AT FARM, CENTS PER DOZEN RANGE JUMBO .81-.84, EXTRA LARGE .79-.82, LARGE .72-.75, MEDIUM .54-.57, SMALL .23-.26.

BOSTON: PRICES TO RETAILERS, SALES TO VOLUME BUYERS, USDA GRADE A AND GRADE A, BROWN EGGS IN CARTONS, DELIVERED STORE DOOR, CENTS PER DOZEN RANGE EXTRA LARGE .98-1.00, LARGE .91-.93, MEDIUM .73-.75.

National Egg Market

Wednesday, November 10, 1993
NATIONAL EGG MARKET - AT A GLANCE: Prices were unchanged to higher in the Northeast and Midwest, unchanged elsewhere. The market tone was fully steady to firm. Demand was fair to very good, best where featured. Supplies were short to adequate with mediums in the tightest position. Breaking stock prices were unchanged, and most breakers attempted to fill orders with previously committed eggs. Live hen offerings decreased, and the trade sentiment was steady to firm.

Northeast Chicken Parts

Wednesday, November 10, 1993
 Buying interest continued light and unaggressive. Supplies were usually sufficient with an occasional report of additional offerings showing up on some items. However, most product is held at steady numbers with most traders comfortable at current price levels. Retail and distributive movement was generally about moderate.

PRICES PAID PER POUND, ICE PACKED AND CO2 PACKED BROILER/FRYER PARTS, DELIVERED TO FIRST RECEIVERS IN POOL TRUCKLOT AND TRUCKLOT QUANTITIES. ITEM CURRENT NEGOTIATED TRADING* BREAST - BS (W & W/O TENDERS) 190-195 BREAST - WITH RIBS 93-94 BREAST - LINE RUN 93 LEGS 36-37 LEG QUARTERS (BULK) 27-28 DRUMSTICKS 35-36 THIGHS 31-32 WINGS (WHOLE) 41-42 BACKS AND NECKS (STRIPPED) 10-12 LIVERS (5 POUND TUBS) 25-30 GIZZARDS (HEARTS) 30-35 INCLUDES NEW YORK CITY METROPOLITAN AREA, NORTHERN NEW JERSEY, MASSACHUSETTS, CONNECTICUT, RHODE ISLAND, AND PENNSYLVANIA (NORTHEAST OF HARRISBURG). * TODAY'S NEGOTIATED SALES AS OF 11:30 A.M.

Weekly New York Egg Market Northeast Quotes

From Fri., November 5 to Wed., November 10

	FRI.	MON.	TUES.	WED.	THURS.
WHITE					
JUMBO	.91	.91	.88	.85	C
EK. LARGE	.83	.83	.83	.83	L
LARGE	.75	.75	.76	.77	O
MEDIUM	.66	.66	.69	.71	S
PULLETS	.53	.53	.56	.56	B
OFF GRADE	.63	.63	.64	.65	D
BROWN					
EXTRA LARGE	.86	.86	.86	.86	
LARGE	.82	.82	.82	.82	
MEDIUM	.65	.65	.65	.65	
OFF GRADE					
UNDERGRADES AND CHECKS	.30	.30	.30	.30	

BREAKING STOCKS: FRI. 42-44 LBS. 37.00-39.00, 48-50 LBS. 43.00-45.00, 50 LBS. AND UP 45.00-46.00.

LANCASTER FARMING STAFF

Everett R. Newswanger, Managing Editor
 Lou Ann Good, Staff
 Andy Andrews, Staff
 Vernon Achenbach Jr., Staff

NEWS CORRESPONDENTS

Joyce Bupp, York County Seven Valleys (717) 428-1865
 Connie Leinbach, Berks County Boyertown (215) 367-4376
 Randy Wells, Indiana Marion Center (412) 397-2529
 Judith Patton, Union Millinburg (717) 968-4770
 Gail Strock, Millin Belleville (717) 935-5675
 Linda Williams, Bedford Bedford (814) 623-5745
 Gay Brownlee, Somerset Salisbury (814) 682-2127
 Carol Pearce, Bradford Wycox (717) 265-5172
 Bonnie Brechbill, Franklin Chambersburg (717) 389-2916
 David Hiebert, Westmoreland Scottsdale (412) 887-5929
 Agnes Smith, Northampton Mt. Bethel (215) 588-8262
 Christine McCahren, Juniata Millintown (717) 436-2886
 Carol & Onalee Smith, Mercer Greenville (412) 588-6203
 C.J. Houghtaling, Tioga Middlebury Center (717) 376-2821
 Beth Miller, Cumberland Newville (717) 776-6511
 Sharon Schuster, Maryland New Windsor (301) 635-2654
 Eva Martin, Maryland Smithsburg (301) 824-2106

Heinsey's Poultry

Roots, East Petersburg Tuesday, November 9, 1993
 Report supplied by auction
 Muscovy Ducks, Drakes: .60-.74.
 Muscovy Ducks, Hens: .56-.68.
 Pekin Ducks: .40-.62.
 Red Fowl: 4-4.5# .20-.38, 5-6# .30-.54.
 Crossbred Fowl: 5-9# .30-.54.
 Crossbred Roosters: 4-6# .40-.74, 7-11# .40-.82.
 Guinea Fowl: .60-1.00.
 Banty Roosters: 2.00-4.75 each.
 Banty Hens: .50-2.25 each.
 Leghorn Hens: .12-.18.
 Leghorn Roosters: not enough.
 Silkies: 3.00-4.25 each.
 Geese: 9-12# .20-.48.
 Pigeons: 1.00-1.50 each.
 White Pigeons: 1.75-2.75 each.
 Rabbits: 4-6# .90-1.28, 7-11# .80-1.10.
 Bunnies: 1.00-2.50.
 Guinea Pigs: .50-2.50.
 Goats: 30.00-44.00.
 Kid Goats: 15.00-32.00.
 Doves: 1.00-2.25 each.
 Chukars: 3.40-3.85 each.
 Pullets: 4-6# .30-.52.
 Total Coops Sold: 932.

New York Egg Market

Wednesday, November 10, 1993
 Prices were higher. Trade sentiment was fully steady to firm. Demand continued to improve, and was moderate to good, best where featured. Supplies were adequate for the large sizes, and tight to instances adequate for mediums. Retail specials were noted on extra-large at 69 cents no restrictions, 37 cents with a coupon. Large were featured at 79-99 cents, 59-79 cents with restrictions, and three dozen for \$2.99 and a coupon, and mediums were featured at 25 cents per dozen with a coupon.
PRICES TO RETAILERS, SALES TO VOLUME BUYERS, USDA GRADE A AND GRADE A, WHITE EGGS IN CARTONS, DELIVERED STORE DOOR, CENTS PER DOZEN RANGE EXTRA LARGE .75-.77, LARGE .72-.75, MEDIUM .66-.69.

SUBSCRIPTION INFORMATION

Subscription Price:
 \$19.75 per year; \$37.50 - 2 years
 \$30.00 per year outside of:
 PA, NJ, MD, DE, NY, OH, VA & WV
 \$58.00 - 2 Years
 Non-Refundable

Lancaster Farming (ISSN 0023-7485) is published weekly for \$19.75 per year; \$37.50, 2 years by Lancaster Farming, P.O. Box 609 1 E. Main Street, Ephrata, PA 17522. Second Class postage paid at Ephrata, PA 17522. POSTMASTER: Send address changes to LANCASTER FARMING, 1 East Main Street, P.O. Box 609, Ephrata, PA 17522.

Phone: Lititz (717)626-1164 or Ephrata (717)733-6397, Lancaster (717)394-3047.
 FAX 717-733-6058

For address change form or new subscription see near Mailbox Markets.

Members of National Association Of Agricultural Journalists
 Pa. Newspaper Publishers Association,
 and National Newspaper Association.
 National Advertising Representative
 J.L. Farmakis, Inc.
 Phone (203)966-1746

Available On Microfilm

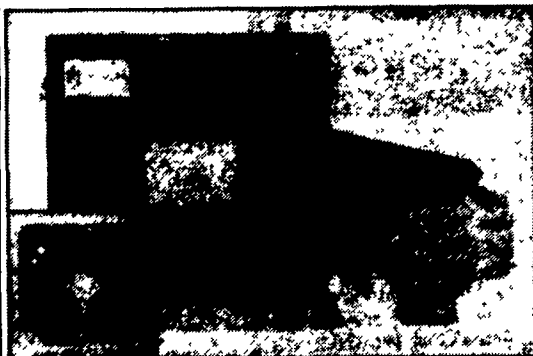
Copies of Lancaster Farming are available on microfilm from University Microfilms International, 300 North Zeeb Road, Ann Arbor, Michigan. Any questions about their service should be directed to the publishing manager.

PUBLISHER'S LIABILITY FOR ERROR

The publisher shall not be liable for slight changes or typographical errors that do not lessen the value of an advertisement. The publisher's liability for other errors or omissions in connection with an advertisement is strictly limited to publication of the advertisement in any subsequent issue or the refund of any monies paid for the advertisement.

Hammer Mills

The practical approach to grinding and mixing high moisture and dry grains



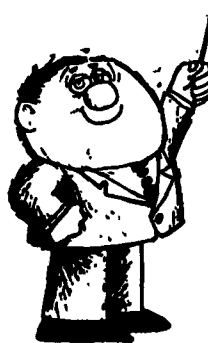
FEATURES

- ★ Low Initial Cost
- ★ Low Maintenance
- ★ Easy Serviceability
- ★ Heavy Duty Plate Magnet
- ★ Dust Tight Enclosure
- ★ 360° Screen
- ★ Low Operating Cost
- ★ Compact Design
- ★ Reversible Hammers & Screens
- ★ Removable Wear Plate
- ★ Self Locking Door Latches



automatic farm systems

608 Evergreen Rd.
 Lebanon, PA 17042
 (717) 274-5333



A LESSON WELL LEARNED... LANCASTER FARMING'S CLASSIFIED ADS GET RESULTS!

We Buy Poultry Weekly For Cash!

- Leghorn Fowl
 - Spent Fowl
 - White Pigeons
 - Bantams
 - Bantam Roosters
 - Broilers
 - Rabbits
 - Guinea Hens
 - Muscovy Ducks
- We Pick Up At The Farm
Watkin's Live Poultry
 718-272-6712
 between 7 AM & 6 PM
 718-843-9302
 After 7 PM

Green Dragon Livestock Sales

Location: 1 mile N. on North State St., Ephrata.
SALE EVERY FRIDAY
 11:00 A.M. - Beef
 6:00 P.M. - Small Animal Sales
 Office 717-733-2444
 Home 717-838-4318
WALTER H. RISSER,
 Proprietor

POULTRY SOFTWARE

Egg Supply Projection (ESP)

- ✓ Designed for egg processors and producers processing eggs supplied by multiple flocks.
- ✓ Predicts the number of cases of eggs produced by weight grade for any given week.

Heritage Computer Solutions

(a division of Heritage PMS, Inc.)
 Annville, PA
1-800-388-EGGS

JACKSON AVE. LIVE POULTRY



WE BUY POULTRY FOR TOP CASH WEEKLY

- Leghorn Fowl
 - Spent Fowl
 - Bantams
 - Bantam Roosters
 - White Pigeons
 - Guinea Hens
 - Muscovy Ducks
- We Pay The Highest Price For Muscovy Ducks**
 We pick up at the farm
(718) 665-1441
 between 7 am - 5 pm
 OVER 25 years in the area