

SYRACUSE, N.Y. — Lewis Gardner, a dairy farmer from Galeton, has been re-elected president of Eastern Milk Producers Cooperative.

This is his fifth one-year term as board president of a dairy co-op that has grown from 2,900 direct and affiliate member farms to 3,200 during his tenure.

Other officers elected by the board are all new to their positions. The realignment follows the retirement from the board of two key officers — former Vice President Timothy Bryant of Pawlet, Vt., and former Treasurer George Mesick of South Schodack, N.Y.

The new officers are Vice President Ed Schoen of Phelps, N.Y.; Secretary Harold Bailey of Roaring Spring; Treasurer Warren Herklotz of Franklin, N.Y.; Assistant Secretary-Treasurer Erwin Clark of Vergennes, VT.

These officers also comprise the board's Executive Committee.

Gardner is an active leader in the Council of Northeast Farmer Cooperatives, a consortium of four dairy co-ops, and in National Milk Producers Federation, a trade organization for most of the nation's dairy cooperatives.

He and his wife, Lois, operate a 100-cow dairy farm with two of their three sons. As president, Gardner represents some 3,500 farm families; as a member of the board of directors, he represents some 200 farmers in a district straddling the western portions of Pennsylvania and New York.

Schoen is a partner in an operation that milks 85 Holstein cows on a 400-acre farm. He and his wife, Jean, are also active in



Elected to leadership of Eastern Milk Producers Cooperative are, from left, Lewis Gardner, president; Ed Schoen, vice president; Warren Herklotz, treasurer; Harold Bailey, secretary; and Erwin Clark, assistant secretary-treasurer.

another business, Schoen-Wyffels Homes Inc., which markets log homes. Although this is his first term as vice president, Schoen has been an officer, serving as secretary for the past three years. As a board member, he represents about 200 farmers in Central New York, the Finger Lakes region and part of the Southern Tier.

Secretary Bailey has served as assistant secretary-treasurer for the past three years. He represents some 200 farmers in west central Pennsylvania including the area around State College. An Eastern member since 1966, Bailey oper-

ates a 138-acre farm with his brother, Bernard, milking 90 cows out of a herd of 180 Holsteins. Bailey and his wife, Linda, have three sons and a daughter.

As treasurer, Herklotz begins his first term as an officer of the co-op. He has been a member of the board since 1989, representing over 260 farm families in a district stretching from the Hudson River valley to parts of the Southern Tier and Central New York. Herklotz went into partnership with his brother, Herman Jr., in 1974, the same year he married his wife, Deborah. Their 230-acre farm has

60 milking cows.

Assistant Secretary-Treasurer Clark works a 350-acre farm that has been in his family for over 100 years. He and his wife Janet have three sons and a daughter. They milk 65 cows. A member of Eastern's board since 1987, Clark represents some 200 farmers on both the Vermont and New York sides of Lake Champlain.

Headquartered in Syracuse, NY, Eastern Milk has member-owners in nine Northeast states, with the majority concentrated in Pennsylvania, New York and Vermont.

## Top 30 CPI Herds Listed

REYNOLDSBURG, Ohio — The top 30 herds in the Guernsey breed have been named for Cow Performance Index (CPI).

The herd averages on this list improved from January to July. In January, the high herd average CPI was +175 and the herd ranked number 30 had a CPI average of +130. In July, the top ranked herd improved to +181 and herd number 30 had a CPI average of +130.

Moving up from second place on the January list is the herd owned by Dale Jensen of Amery, Wisconsin, with an average CPI of +181.

In a tie for second were the herds owned by Phil Laesch, Curtis, Wisconsin, and Herby Lutz, Chester, South Carolina, with average CPIs of +175.

Another tie in fourth place were the herds owned by Alan and Barbara Mann, Silverton, Oregon, and Gerald Borgwardt, Manitowoc, Wisconsin, with CPIs of +172.

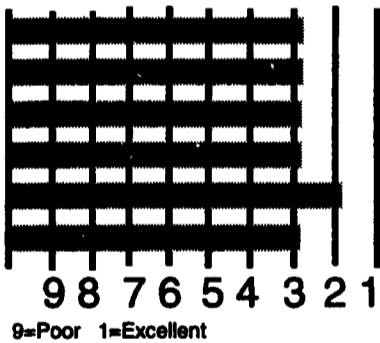
CPI is an estimation of a cow's ability to transmit various traits to her offspring based on a 5:1:1 ratio of Predicted Transmitting Abilities (PTA) for pounds of protein, pounds of butterfat and type.

This list compiled by the American Guernsey Association is made up of the top 30 herds that are enrolled in the Total Performance Evaluation (TPE) program and DHIR for average CPI.

In the case of a tie, the milk, fat and protein dollar value is used.

## Companion Hybrids. For A Better Shot At A Bigger Yield.

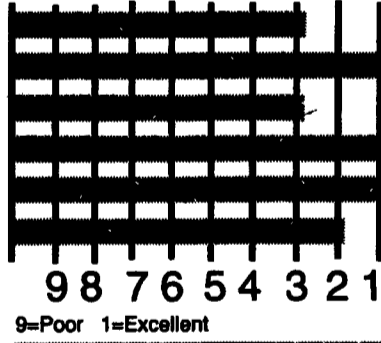
Spread your risk and avoid a hurry-up harvest with this team of top-yielding corn hybrids from DEKALB



(EXP 258)  
Excellent plant health provides consistent yields.

**Key traits:** Produces consistent yields under a wide range of conditions. Excellent stalk strength with excellent late-season plant integrity and very good drydown. Very good seedling emergence. Flexible usage for grain or silage.

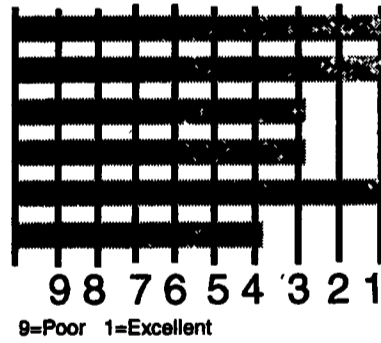
**Management tips:** Good choice for tough conditions where good stalk, plant health are required. Fast seedling emergence and growth allow planting under variable tillage practices, including no-till or minimum tillage. Adaptable for medium to high populations. Flowers early for its maturity to help avoid mid-season heat stress.



(EXP 261)  
Superior plant health, emergence and standability. Plant this one early.

**Key traits:** Excellent seedling vigor and emergence. Super stalk strength and staygreen with excellent late-season plant integrity. Very good yields and grain quality with relatively thin and loose husk cover at harvest for excellent drydown.

**Management tips:** Plant early; excellent choice for no-till or minimum-till situations. Superior standability allows flexible harvest schedules. Superior plant health for full-season areas. Tough hybrid adapted to a wide range of soil types.



(EXP 266b)  
New for Eastern Corn Belt! Excellent choice for no-till.

**Key traits:** Excellent seedling growth rate, stalk strength and staygreen. Produces consistent yields across a wide range of environmental conditions. Good choice for no-till. Plant for grain or silage. Excellent resistance to Southern Corn Leaf Blight.

**Management tips:** Plant at medium to high populations. Adapts to a wide range of tillage practices — an excellent choice for no-till. Exhibits strong performance across all soil types. Adaptable to all crop rotations. Good choice for grain or silage.



### FOR SALE AIR COMPRESSORS

Quincy Model 5120,  
2 stage, 25 HP,  
Completely Rebuilt  
**\$2800.00**

Quincy Model 350,  
2 stage, 10 HP,  
Rebuilt  
**\$1665.00**

Quincy Model 340,  
2 stage, 7 1/2 HP,  
Rebuilt  
**\$1095.00**

Ingersoll-Rand Type 30  
2 stage, 3 HP, Rebuilt  
**\$365.00**

Rebuilt Quincy 3 &  
5 HP Single stage and  
2 1/2 & 5 HP 2 Stage  
compressor in stock

"We Install Compressors"  
For Service Call  
Blevins (717) 529-6458

**STAUFFER  
PUMP WORKS**  
501 Coopers Drive  
Kirkwood, PA 17536  
Samuel S. Kling, owner

Earning Our Way  
On More Of Your Acres.

Contact your local DEKALB  
Representative For More Information

