

**35 TRUCKS & TRAILERS**

**FOR SALE:** Flat bed gooseneck trailer, good condition, (3) 6000# axles \$4500 Neg. 215-445-9459.

**For Sale:** 1965 IH dump truck, good rubber, body fair, runs great, inspected, haul 3 ton, new brakes, king pins. 717/865-5014.

**Dry Lime-Fertz. Spdr. w/ Booms, Hydraulic Control & Mack Tandem. Reasonable. Adams County. (717)624-8124.**

**LN-800 Ford dump truck, 7 1/2 x 10 1/2 box, GVW 36,000, trailer hookup. 717/882-9337.**

**1982 Chevy Dump/Bulk Feed Truck, Single Axle, 26,000 GVW, Runs Good, 73,000 Original Miles, \$5000. (717)899-8772.**

**1984 International roll back, 1988 Jerr-Dan Super 10, 22' bed. Many extras. Asking \$18,000. 717-697-8058; 717-738-4734.**

**1986 Ford Ranger, V-6, XL, 5 speed, 87,700 miles, black, \$2,900. (717)949-2672.**

**1987 Ford F-8000, New Cat 3208T and Clutch, 33,000 GVW, 24' Van w/ Lift Gate \$15,900. After 6PM (717)668-0119 Contact Darryl.**

**1988 Ford Bronco, full size Eddie Bauer, 4WD, 302 auto., 98,000 miles, clean, \$7000. 301/894-9462.**

**1990 Ford F-150 4X4 XLT Lariat, All Options, V-8, Excellent Condition. (717)776-5996 After 5PM.**

**2 Possum-belly cattle trailers, reasonable, sell 1 or all. 410-568-0412.**

**4-1992 Custom Dodge wheels w/Michelin XC all terrain tires (31X10.5), 20,000 miles, \$300 OBO. Call Troy after 5PM (717)733-6998.**

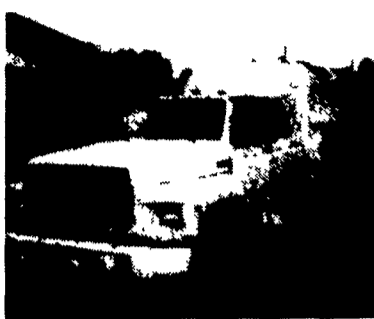
**Huntingdon Equipment**

Rentals Available **GOOD USED EQUIPMENT**

Huntingdon Valley, PA • 215-672-9667 • 1-800-543-3833 • Eddie



**20 Ton P&H Crane 3 Sec. Hyd. Boom** mounted on a 1968 F.W.D. both engine gas (new front 89), fleet maintenance.



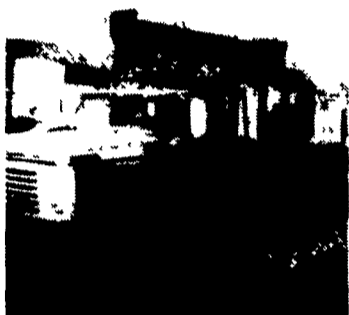
**1985 F-600 8.2 Diesel, Auto, 5 Man Cab, Utility With Rollup Door On Rear, Clean, Low Mileage, 1 of 3.**



**1979 Ford V8 10-Speed, Air, 14,000 Lbs. Boom, 2 Speed Auger, Upper Controls, 4 Outrigger, Dig Holes-Lift-Put Man In Air. This Unit Does It All.**



**Holan 70' Double Bucket 75' working height** mounted on 1981 Western Standard, 6x6 Flatbed, CAT 3208, Auto.



**Need a Lift? We Have A Large Selection Of Boom Trucks Up To 14,000 lbs. Cap. Some With Post Diggers.**



**Bucket Trucks 28' to 65' Gas and Diesel. Call For Details.**

**DIGGER DERRICKS/AERIAL BUCKETS/UTILITY EQUIPMENT**

**INTERNATIONAL 6x6 BRIDGE TRANSPORTING STAKE BODY TRUCKS**

Front Winch, PS, Air Brake, 1400/20 Tires, 21 ft. Bed with removable steel racks. Continental 6 cyl. engine. LIKE NEW 800-2,500 Miles. Excellent for off road heavy duty cargo transporting with their all wheel drive and ability to climb a maximum grade of 70 degrees. Double Frame. A must for every farmer \$9,450 Each.

**(814)834-1018 St. Marys, Pa.**

**1988 F-250 XLT Lariat Supercab, 8600 GVW, 351 Gas, AT, AC, Cruise, Clothseat, Sliding Window, Bedliner, Hitch Package, Mint Condition, Dk. Blue \$8,250 OBO 717-369-3019**

Mark VII - Pickups - Broncos - Bronco II - Stake Body - Crew Cab

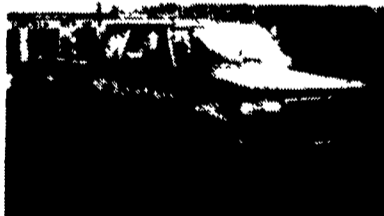
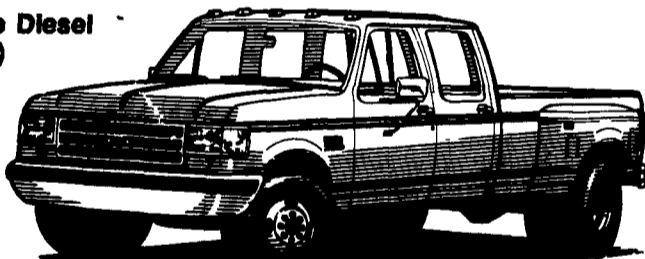
Custom Vans  
XLT  
Grand Marquis  
Marquis

Van  
Topaz  
Diesel Pickups  
Mustang  
T Bird

**In Stock**

**'94 FORD CREW CABS**

(2) F250's  
(2) '93 Turbo Diesel (in stock)



**'93 FORD F350 XLT**  
Crew Cab, 7.3 Diesel, AT, Loaded, 23,000 Mi. #4032A  
**\$22,499**



**'89 TOYOTA SHORTBED DELUXE**  
4x4, 35,000 Mi., Very Clean, #2058A  
**\$11,999**



**'90 FORD F150 XLT**  
6 Cyl., 5-Speed, 13,000 Miles, #P1654  
**\$14,379**



**'93 FORD AEROSTAR XLT**  
AT, Dual AC, Roof Rack #P1730  
**\$19,997**



**'89 CHEVY 3500 CREW CAB**  
Dually, Silverado, 454, V8, #1751A  
**\$14,895**



**'93 FORD AEROSTAR XLT**  
Extended, All Wheel Drive, 21,000 Miles, Like New #P1734 ...Like New \$21,400



**'90 FORD CLUB WAGON**  
XLT V8, AT #1472A  
**Special Price \$10,997**



**'89 FORD F150 XLT Super Cab**  
w/Matching Cap, 5.0 V8, AT, Low Miles #1996B  
**\$12,899**



**'91 FORD EXPLORER XLT 4 Dr., AT, Cassette, Very Clean #P1736**  
**Special \$17,600**



**'92 FORD F150 XLT 302 V8, 4 Spd., 1-Owner #1609A**  
**\$14,989**



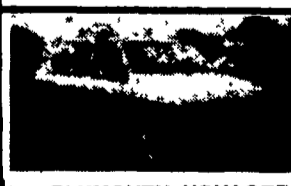
**'91 FORD AEROSTAR 6 Cyl., AT, AC, Low Miles #1828A**  
**\$15,897**



**'92 FORD F250 5.8 liter, AT, 30,000 Mi., Like New #P1675 ...Sale Price \$14,999**



**'90 DODGE CARAVAN SE, AT, AC, White, 36,000 Miles, #1974B**  
**\$12,997**



**'86 PLYMOUTH VOYAGER LE, AT, AC, #1924A**  
**\$6,999**



**'90 FORD F150 XL 320, V8, AT, AC, #P1653**  
**\$14,999**



**'90 PLYMOUTH VOYAGER, 6 Cyl., AT, Cassette #2039A**  
**\$13,387**

Unless This Emblem Is On Your Car Or Truck You Probably Paid Too Much

**SHEEHY LEBANON**

**SHEEHY FORD LINCOLN MERCURY INC.**  
20th & Cumberland St., Lebanon

Parts Dept. Open  
Daily 8-5  
Sat. 8-12  
717-273-8168

9-9 Daily  
9-5 Sat.  
717-272-7671



Tempo - Cougar - Continental - Town Car - 4x4 - Box Van - Rangers