

Top Lancaster DHIA Cows By Protein For October

(Continued from Page C9)

GALEN C MARTIN JANDY	RH	8-3	305	29,101	3.1	908	3.7	1082
JOSEPH C WIVELL NEDA	RH	4-3	305	27,325	3.3	904	3.4	938
EDA	RH	4-2	305	25,315	3.4	869	4.0	1010
GLENN F SHENK STAR	RH	5-6	305	26,583	3.4	900	3.3	865
NEFFDALE FARM WINSTO	RH	6-2	305	30,108	3.0	895	3.4	1024
DAVID K STOLTZFUS JENNY	GR-H	6-5	305	29,739	3.0	894	3.2	937
RED KNOB FARM 967	GR-H	5-1	305	29,971	3.0	892	2.9	869
1161	GR-H	3-2	305	27,871	3.0	829	3.4	948
1131	GR-H	3-5	297	27,654	2.9	806	3.2	887
1198	GR-H	2-11	305	25,169	3.2	799	3.7	924
1162	GR-H	3-2	290	26,089	3.0	794	3.0	786
1216	GR-H	2-10	288	23,278	3.4	793	4.0	939
1004	GR-H	4-9	305	25,286	3.1	781	2.9	722
JOHN H HOWARD MARVEL	RH	6-7	305	30,839	2.9	892	3.1	958
DARYL + SAM MARTIN 320	GR-H	5-6	305	26,456	3.4	891	3.9	1036
407	GR-H	3-3	305	25,037	3.2	792	3.8	943
JEFFREY L AUNGST 26	GR-H	4-0	305	29,789	3.0	888	2.7	796
KENNETH D NYER WENDY	RH	9-10	305	26,074	3.4	887	4.1	1059
ENERAL	RH	7-0	305	25,942	3.2	821	3.9	1018

PILLAR-PRIDE FARM

62 H	GR-H	5-1	305	29,585	3.0	884	2.9	845
23 H	GR-H	5-11	305	25,274	3.3	823	3.9	985
61 E	GR-H	5-3	296	22,773	3.4	785	4.1	936
CARL E & NANCY G BRANDT 183	GR-H	4-0	305	26,025	3.4	883	4.3	1123
155	GR-H	4-10	305	25,621	3.2	819	3.3	834
187	GR-H	3-11	305	24,309	3.4	818	4.0	964
DALE R HERSHEY JOLLY	RH	6-3	305	29,151	3.0	879	3.2	928
DALE	RH	3-10	305	22,173	3.6	797	4.0	880
VERNON R UMBLE + SON KAREN	RH	5-9	305	26,491	3.3	876	3.4	899
LEMMDR	RH	6-9	305	26,552	3.1	818	3.4	911
ANGEL	RH	6-0	305	26,740	3.0	797	4.1	1084
DENNIS R BENDER 144	GR-H	6-0	305	28,347	3.1	875	3.4	969
64	GR-H	4-4	305	25,959	3.2	836	3.0	779
GLENN M SHELLY 7	RH	4-0	305	24,153	3.6	874	3.6	879
28	RH	5-2	305	26,751	3.2	862	3.4	899
KENTON L SWEIGART 130	GR-H	3-9	305	26,671	3.3	874	3.5	934
78	GR-H	5-9	305	26,139	3.2	835	3.9	1023
106	GR-H	4-11	305	27,682	3.0	822	3.6	1005
83	GR-H	5-9	305	25,607	3.1	801	3.5	887
AMOS E STOLTZFUS SATURD	RH	5-7	305	26,763	3.3	872	3.8	1024

(Turn to Page C11)

Grange Recognizes Youth

CLARION (Clarion Co.) — The Pennsylvania State Grange Youth Department last week recognized its members' accomplishments during the past year during the 121st Pennsylvania State Grange session held in Clarion.

Nettie Kauffman, Youth Department director, announced winners in three categories.

The C.H.A.N.C.E. award stands for Caring Has A Noble Continuing Effect. The award is given to those members who have been suggested for membership on the National Grange Youth team. One single male and female and one married couple are selected at the national level.

The award also asks the member to list their community affairs and projects, describe their school activities or profession and Grange activities.

The Spirit of Grange award is a program that selects Grangers who have excelled in their lives and met their personal goals in and out of the Grange.

The subordinate (local) Grange

and Pomona (county) Grange Chairpersons of the Year are awards that are for five members who have achieved activities, program and projects within their local Granges.

The winners are:

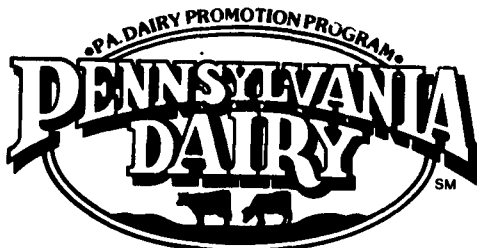
C.H.A.N.C.E. Award: Wendy Steffy - Alleghenville Grange #2065, Berks County.

Spirit of Grange Award: Mary McMillan, Westfield Grange #1514, Lawrence County; Wendy Steffy, Berks County; Mary Ann Keith, Lincoln Grange #914, Huntingdon County.

Pomona chairperson of the year: Heather Schlegel, Berks County Pomona #43.

Subordinate chairperson of the year: Over 200 members: Faye Schaeffer, Virginville Grange #1832, Berks County; 101-200 members: Tim Schaeffer, Pioneer Grange #1777, Berks County; Under 100 members: Wendy Steffy, Berks County.

Overall Subordinate chairperson: Faye Schaeffer, Berks County.

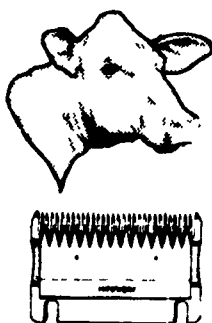


PROFESSIONAL CLIPPER BLADE SHARPENING



All blades honed to razor sharpness on our state-of-the-art equipment.

We GUARANTEE our workmanship, every blade is tested to assure sharpness before it leaves our shop



We also Service & Repair Clippers

We accept MasterCard & Visa

Aaron Groff & Son
FARM & HOME STORE

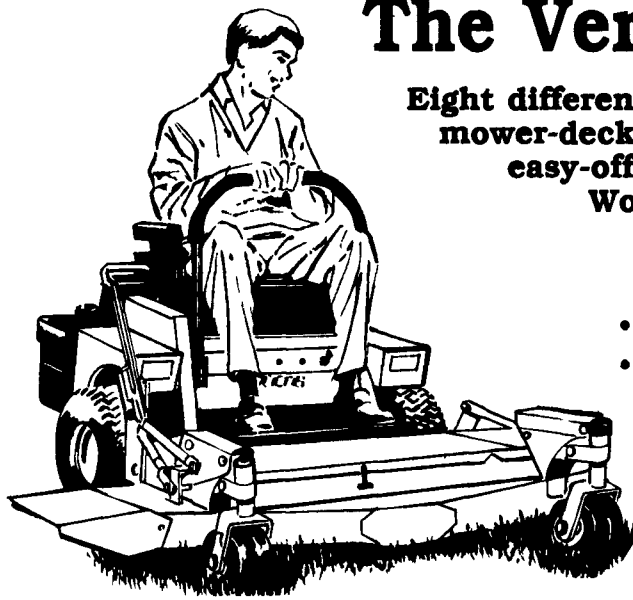
103 Clearview Drive • Ephrata, PA 17522

Our rate is \$5.00 per set. With a \$10.00 minimum. On orders of \$15.00 or more we pay the return shipping

(800) 468-4909

Need more info call us today.

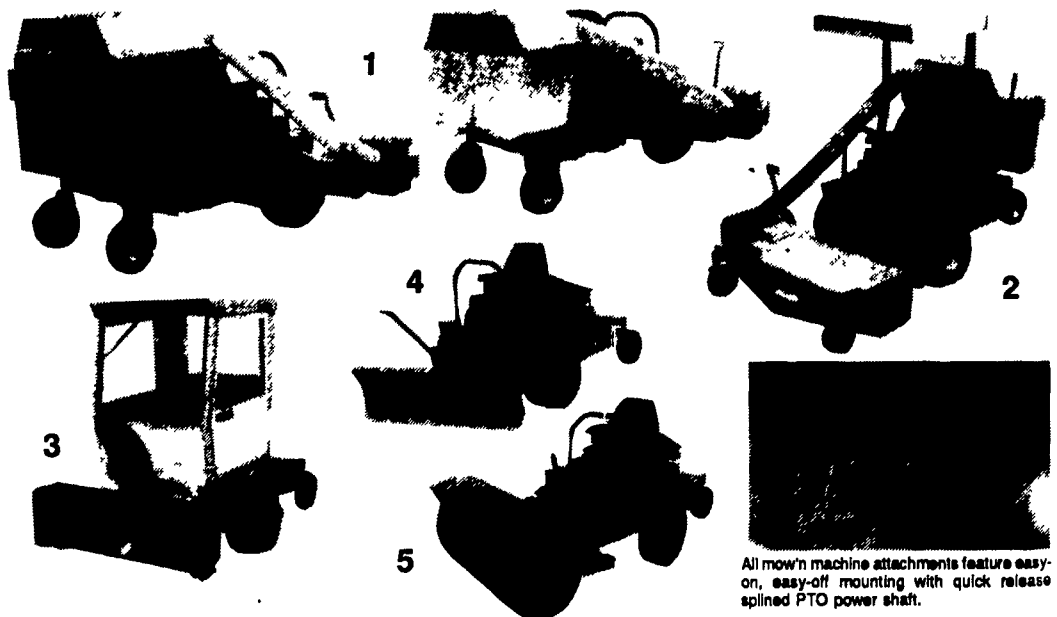
Woods mow'n machine... The Versatile One!



Eight different tractors, Five sizes of mower-decks and a line of easy-on, easy-off attachments make the Woods mow'n machine an "all-season" performer.

- True 360 zero turning
- Finger-tip control of speed, direction and braking
- Maneuverability that lets you trim as you mow
- Convenient 'out-front' mowing

Woods mow'n machine attachments



All mow'n machine attachments feature easy-on, easy-off mounting with quick release splined PTO power shaft.

1 Mow'n machine grass vac's are available in two sizes and three models.

3 Mow'n machine snow-thrower and cab enclosure.

2 Mow'n machine roll-over protection (ROP's) seat belt and sun canopy.

4 Mow'n machine dozer blade clears 48 in. width.

5 Mow'n machine brush sweeps 48 in. path.



...come in for a demonstration

R.S. HOLLINGER & SON, INC.
Mountville, PA
717-285-4538

ECKROTH BROS. FARM EQUIPMENT
New Ringgold, PA
717-943-2131

THOMAS POWER EQUIPMENT
Avondale, PA
215-268-2181

PIPERSVILLE GARDEN CENTER
Pipersville, PA
215-766-0414

N.H. FLICKER & SONS, INC.
Maxatawny, PA
215-683-7252

NESLEY EQUIPMENT CO.
Pottstown, PA
215-460-6391

BANGOR IMPLEMENT
Bangor, PA
215-568-5924