

# PUBLIC AUCTION

OF SHOP EQUIPMENT,  
POWER TOOLS, ENGINES,  
PARTS, TRACTORS & LAWN  
& GARDEN TOOLS

SAT., NOV. 13, 1993  
9:00 AM

DIRECTIONS: From Route 30 & 41 in Gap, take Route 30 West approximately 2 miles to Hensel Road (at Rough & Tumble Museum). Turn right to auction, watch for signs. LOCATED AT 568 Hensel Road, Kinzers, Lancaster County, PA.

## TOOLS & PARTS

Saws; levels; hammers; wrenches; pliers; squares; socket sets; screwdrivers; chisels; planes; braces; many other asst. hand tools; forge with electric blower; extension ladders; step ladders; jack stands; C-clamps; tarps; hand truck; creeper; fire extinguishers; EMT banders; iron work horses; mortar box; mason hoe; oil bottles; barrel pump; hand sludge pump; 4" propane torch; snatch blocks; tackle blocks; 1/2 ton hoist; rigid pipe vise; pipe threader and pipe cutter; dolly bar; dollies; sawblades; log chains; hooks; clevis; trailer jack stands; load binders; viscs; many worktables; hay wagon; painting supplies; saw horses; books; shopvac; ladle; air chisel; fans; chain hoists; tire tank; 1"x1" wire; tarps; steel shelving; 1" rope; chain; roller chain; belts; pulleys; trailer couplers & balls; pedestal bases; stainless wire; iron stock; iron piles; brick; firebrick; wheels; tires; clean 5 gal. cans; boat steering wheel & gears; asst. pipe fittings; asst. electric supplies; asst. engine parts; P.U. truck tool box; asst. bolts, nuts, washers, etc.; bolt bins; hydraulic jacks; pneumatic tools; air chisel; tap & die set; bolt cutters; hydrant; pressure tank; 55 gal. drums; 42" - 8" I beam; jerry cans; bread truck body; trailer frames; and axles; and more.

## POWER TOOLS, EQUIPMENT, MOTORS & ENGINES

9" Southbend metal lathe; 5 HP table saw; 2 HP table saw; power hacksaw; 200 AMP G.F., welder on wheels powered by 4 cyl. Hercules; acetylene torches; 3/4" drill press; 200 AMP AC welder; welding rods; extension cables, etc.; 3 phase converter; lathe tool post grinder; 3 KW generator; sawsall; grinders; bench grinders; worm drive skill saw; sanders; 16 ga. power shears; 2-2 H.P. compressors with 60 gal. tanks; gear reducers; various electric motors from 1/4 H.P. to 5 H.P.; 350 V8 engine; electric start 2 cyl. Wisconsin engine; 2 cyl. Wisconsin with clutch; asst. Tecumseh engines; vertical shaft short block D&D; grangers vertical shaft; Toro convertible; and more.

## LAWN & GARDEN EQUIPMENT & SUPPLIES

Early Wheel Horse riding mower & plow; three (3) 21" self propelled Lawn Boys with baggers; asst. potted evergreen trees; 4 push mowers; 3 Craftsman pushmowers; 4'x5' trailer; 2 Echo gas string trimmers; 2 Homelite 16" chain saws; 8 H.P. leaf blower; 36" Murry rototiller; 7 wheelbarrows; wheelbarrow wheels and tires; wooden wheelbarrow; case lawn sweeper; grinder chipper on wheels; plant starter rack; Scotts spreader; tree pruner; sprayers; fertilizer; trimmer; several utility trailers; tree wrap; lawn roller; cast iron planters; 2 cyl. Wisconsin powered cord wood saw; many cords of dried firewood; coal; crosscut saw; scythes; cant hook; asst. lumber, 2"x6"x18", 2" walnut, redwood, fir, 4"x4", telephone poles; asst. rakes; shovels; forks; digging irons; etc.

TWO JOHN DEERE 400 HYDROSTATIC TRACTORS WITH MOWER DECKS, PLOW, WEIGHTS, CHAINS. 200 GALLON HUDSON SPRAYER ON WHEELS, 8 HP 36" GAS LOG SPLITTER.

## APPLIANCES & HOUSEHOLD GOODS

Frigidaire ref/freezer; frigidaire dryer; Maytag washer; 25" Zenith color TV; desk; file cabinet; 3 large wooden wardrobes; cot; old Coleman oven; chimney cleaning brushes; wood & coal furnaces; old crates; canning jars; barrel stove kit; roll of paper & cutter; Mercury light; gas lanterns; trestle table & benches; deer mount; brass horseshoes & quoits; mole trap; live trap; glider; vacuum; 4 pc. bedroom suite; sofa bed; mahogany dresser; kerosene lamps; asst. household items and more.

AUCTIONEER'S NOTE: Very large auction of shop equipment & parts, plus lawn and garden items - come early!

PAYMENT TERMS: Payment in full day of auction with cash, certified or approved check.

Auction Conducted For:

ALFRED KUTZNER ESTATE

Auction Conducted By:



Stephen J. Barr - AU-002422-L  
James S. Davis, Jr. - AU-002421-L  
Gap, Pa. 17526 - (717) 442-9221

# Dairy and Livestock Sales

## PUBLIC SALE

OF  
NEW INTERIOR DESIGN ITEMS  
(RESIDENTIAL & COMMERCIAL)  
FURNITURE - ORIENTAL RUGS  
MIRRORS - FRAMED PAINTINGS  
& PICTURES  
LAMPS - DECORATIVE ITEMS  
ARTIFICIAL PLANTS &  
ARRANGEMENTS

WED., NOV. 17, 1993 at 9:00 A.M.

Located:  
302 W. Orange Street, Lancaster, PA  
Food Served.

Howard Shaub, Inc. Sale by  
(717) 464-3541 Town House  
Auctioneer (AU-000831-L) Interiors, Inc.

## COMPLETE DISPERSAL

Waryanka Dairy Farms  
Saturday, Nov. 20, 1993  
At 11:00 A.M.

At the farm, about 3 miles off PA Turnpike #7 Interchange. From #7, Irwin Exit, go E on Rte. 30 towards Greensburg about 500 ft. to first light, turn right; go to 4-way stop sign, turn right; 1 mile past school to Y (with stop except for right turn), turn left at Y to stop sign, straight ahead about 1 1/2 miles to first farm buildings on left.

86 Holsteins; 75 Registered, 11 grades, 52 milk cows, 8 bred heifers, 26 open heifers and calves.

Certified, Accredited, Calfhood Vac., 7 way vac., AI sired, classified, pregnancy checked, 30 day test for interstate, good udders, well grown, type, in good condition, low somatic cell count, fall freshening herd with LOTS OF POTENTIAL. DHIA is 18,385 3.9% 712. Cows are milking up to 100 lbs.

Selling:  
Silver Towers B Star Jetta 14696042 bred to Prelude, due 4-2-94.

"86" dam (at 3 yr.) by Mandingo over 20,000# milk, 900# f.

sells pregnant to Black Star Her sister by Promise sells. "89 granddam with records to 26,040m. 3.6 933f.

Silver Towers Leadman Mona "85" dam by Valiant selling "86" Sexation Granddam 20,000m. 3.8% 3.3.

"VG" Mars Tony dau. born Jan. 1989 Ex. mam. dam by Spirit (unclass.) 3 yr. 305 20,019 43,867 3.5 699. Her Leadman dau. bred to "Lindy" sells.

Broker calf sells. Fancy Wister calf, born 3-1-93. Two generations of VG dams over 20,000#m.

4 "Thors" milking, several Broker and Wister calves.

2 yr. old Bell Elton dau.

Sires Include: Black Star, Thor, Mandingo, Promise, Leadman, Enhancer, Wister.

Service Sires Include: Broker, Lindy, Highlight, Chesapeake, Tesk, Black Star.

Terms: Cash Lunch Available

Catalogs Available

OWNERS:

Don & Wes Waryanka  
Tilbrook Road  
Irwin, PA

Phone (412) 446-5191  
(412) 446-5714

Clark A. Yoder, Auctioneer

AU001048L  
Salisbury, PA  
Phone (814) 662-2901

Oren C. Bender, Pedigree  
Accident, MD  
Phone (301) 746-8340

Not Responsible For  
Accidents

## Public Auction Register

Closing Date Monday 5:00 P.M.  
of each week's publication

## SEPTEMBER

FRI. SEPT. 9 - 1:30PM,  
State Graded Feeder Pig

Sale. Located At Carlisle  
Livestock Market, Inc. Exit  
12 South Off I-81. Left Onto  
Alexander Spring Road.  
(717) 249-4511.

## Green Dragon Livestock Sales

Located 1 Mi. N. On  
North State St., Ephrata  
Sale Every Friday

11:00 A.M. Beef

7:00 P.M. Small Animal Sale.

200-300 Stocker & Feeders Every Friday.  
Regular Shippers Of Northern Cattle.

WALTER H. RISSER,  
Prop.

Home 717-838-4318  
Office 717-733-2444

## FEEDER CATTLE SALE

Thursday,  
Nov. 11, 1993  
7:00 P.M.

Jersey Shore Livestock Auction  
814-349-5099 814-349-8760  
717-398-0111 Thursday  
Livestock Auction  
Every Thursday  
4:00 P.M.

## Annual Fall Female Sale

12 p.m., Saturday, November 20, 1993

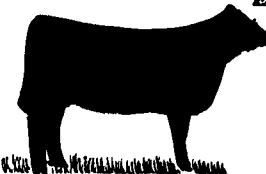
At the famous Buck & Doe Run Farm  
near Coatesville, Pennsylvania

Over 150 Head Sell

The largest selection of  
performance Angus genetics  
to sell at auction in the  
Eastern United States!



BREEDERS



ANNALISA FARMS, LTD.  
Tom & Rose Ralger  
PO Box 773  
Huntsburg, CA 05448  
(707) 433-3588

TWIN CLAY FARMS  
Frank & Susan Whitton  
RD 8, Box 222  
Coatesville, Pa 19320  
(215) 486-0972

BUCK RUN FARMS  
Bill Fickna  
RD 8, Box 432  
Coatesville, Pa 19320  
(215) 486-0780

DEEP RUN FARM  
Jim & Betty Sargent  
Box 610  
Unkriville, Pa 19375  
(215) 347-0230

TWIN OAK FARMS  
Irene & Fritz Frey  
372 Piquette Road  
Quarryville, Pa 17658  
(717) 786-2146

For your free reference catalog, contact anyone in the office of the Sales Managers,  
TOM BURKE AND DICK BECK, AMERICAN ANGUS HALL OF FAME, at the WORLD  
ANGUS HEADQUARTERS, Box C-2, Smithville, MO 64089-0817 Phone (816) 532-0811

## COLLECTOR FARM TOY PUBLIC AUCTION

Saturday, November 20 at 10 a.m.  
Preview at 9 a.m.

To be held at the Owego Treadway Inn, Just off Rt. 17 at Exit 65 in  
Owego, NY. Owego is 20 miles west of Binghamton, NY, 70 miles  
south of Syracuse, NY.

SELLING TWO COLLECTIONS FROM CANADA  
PLUS 1 LOCAL COLLECTION

SELLING 300 TO 400 TRACTORS

Watch Next Weeks Paper For Listing

SALE CONDUCTED BY:

GOODRICH AUCTION SERVICE INC.

Rt. 38 & 38B - Newark Valley NY 13811  
(607) 642-3293 FAX (607) 642-3295

FRI. SEPT. 23 - 1:30PM,  
State Graded Feeder Pig  
Sale. Located At Carlisle  
Livestock Market, Inc. Exit  
12 South Off I-81. Left Onto  
Alexander Spring Road.  
(717) 249-4511.

## AUGUST

FRI. AUG. 12 - 1:30PM,  
State Graded Feeder Pig  
Sale. Located At Carlisle  
Livestock Market, Inc. Exit  
12 South Off I-81. Left Onto  
Alexander Spring Road.  
(717) 249-4511.

FRI. AUG. 26 - 1:30PM,  
State Graded Feeder Pig  
Sale. Located At Carlisle  
Livestock Market, Inc. Exit  
12 South Off I-81. Left Onto  
Alexander Spring Road.  
(717) 249-4511.

## JULY

FRI. JULY 8 - 1:30PM,  
State Graded Feeder Pig  
Sale. Located At Carlisle  
Livestock Market, Inc. Exit  
12 South Off I-81. Left Onto  
Alexander Spring Road  
(717) 249-4511.

FRI. JULY 22 - 1:30PM,  
State Graded Feeder Pig  
Sale. Located At Carlisle  
Livestock Market, Inc. Exit  
12 South Off I-81. Left Onto  
Alexander Spring Road.  
(717) 249-4511.

## JUNE

FRI. JUNE 10 - 1:30PM,  
State Graded Feeder Pig  
Sale. Located At Carlisle  
Livestock Market, Inc. Exit  
12 South Off I-81. Left Onto  
Alexander Spring Road.  
(717) 249-4511.

FRI. JUNE 24 - 1:30PM,  
State Graded Feeder Pig  
Sale. Located At Carlisle  
Livestock Market, Inc. Exit  
12 South Off I-81. Left Onto  
Alexander Spring Road.  
(717) 249-4511.

## MAY

FRI. MAY 13 - 1:30PM,  
State Graded Feeder Pig  
Sale. Located At Carlisle  
Livestock Market, Inc. Exit  
12 South Off I-81. Left Onto  
Alexander Spring Road.  
(717) 249-4511.

FRI. MAY 27 - 1:30PM,  
State Graded Feeder Pig  
Sale. Located At Carlisle  
Livestock Market, Inc. Exit  
12 South Off I-81. Left Onto  
Alexander Spring Road.  
(717) 249-4511.