

REAL ESTATE AT AUCTION

Saturday, November 27, 1993

at 12:00 Noon

SULLIVAN COUNTY

House, Garage and 19 Acres with Standing Timber in Shunk, PA.
For details contact Michael at (717) 494-0170.

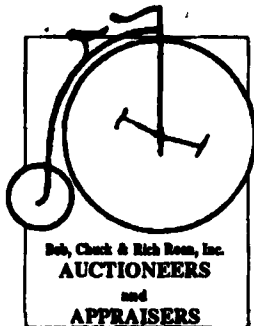
Terms: 15% down at time of sale, balance due within 30 days upon delivery of clear deed. Sale subject to executor's immediate confirmation. 1% Realtor Participation offered. Call for details & requirements.

Also selling contents of house the same day. Call or watch for future listing.

Directions: Immediately east of Shunk on Route 154.
Watch for our signs.

Bob, Chuck & Rich ROAN, INC.
AUCTIONEERS & APPRAISERS
AU-000777-L

RR 3 Box 118 * Cogan Station, PA 17728
(717) 494-0170 * Fax (717) 494-1911



Public Auction Register

Closing Date Monday 5:00 P.M.
of each week's publication

FRI. NOV. 26 - 1:30PM, State Graded Feeder Pig Sale. Located At Carlisle Livestock Market, Inc., Exit 12, South Off I-81, Left Onto Alexander Spring Road. 717-249-4511.

FRI. NOV. 26 - 7PM, Feeder Cattle Sale. Located At New Holland Sales Stables, Inc., New Holland, Pa.

FRI. NOV. 26 - 7PM Juniata Co. 21 Ac. Tract Located along Rt. 235 in Fayette Twp., Juniata Co. The Wesley W. Watts Estate. Long's Auction Service.

SAT. NOV. 27 - 8:30AM, Valuable Tractors, Farm Equip., Truck, Antiques, Collectables, Misc. Located Southern York Co., Pa. From I-83 Exit #1 (Shrewsbury) Take Rt. 851 W±0.3 Mi. Turn R Onto Mt. Airy Rd. For ±1 Mi. Turn R Onto Plank Rd. For ±1.2 Mi. Turn L Onto Mt. Olivet Rd. & Go ±2 Mi. To Sale. Or From Jerry's Food Rite In Red Lion Take Rt. 24 S ±4.2 Mi. Turn R Onto Rt. 216 W For Short Distance. Turn L Onto Mt. Olivet Rd. & Go ±2 Mi. To Sale. Owner, Robert M. Seaks. Melvin Haines & Ralph Breneman, Auctions.

SAT. NOV. 27 - 9AM Antiques, household goods, coins. Loc: Willow St. Al Starr Bldg., behind the Fire House, Willow St., Pa. By Elizabeth Walter, Kreider, Kline & Good Auctions.

SAT. NOV. 27 - 9AM, Personal Property. Located 42 S. Heinzelman St., Manheim, Pa. Owner, Theodore Sosnowski. E.M. Murry Assoc. Auction.

SAT. NOV. 27 - 11AM, Luta Farms Dispersal Of All Machinery & Dairy Barn Equipment. Located Bradford, (Steuben Co.), New York. Pirrung Auctions, Inc., Wayland, NY.

SAT. NOV. 27 - 1PM 1½ story brick dwelling, 30'x48' masonry shop, real estate. Located at 1625 Main St., Goodville (East Earl Twp), Lanc. Co., Pa. By Aaron & Verna Nolt, Horst, auctions.

Public Auction MONDAY NOVEMBER 8, 1993 3:00 P.M.

GOLD & SILVER COINS CURRENCY

LOCATION: Quality Inn of Lebanon Valley, along Route 72 In Lebanon, Lebanon County, Pa.

480 LOTS 480 LOTS

A collection from Henry Smith Estate, Palmyra, Paul Gilbert, Lebanon and various other trust clients.

270 lots of gold from \$1 to \$20; Silver from 3¢ to 50¢; Trade, Peace & Morgan silver dollars; books of coins; proof sets; large cents; flying eagles; currency & large notes.

Catalog available from auctioneer or LVNB or at the door auction day. Doors open at 12:00 for inspection.

TERMS: CASH - checks by approval of LVNB. Buyers unknown to LVNB or auctioneer must have current letter of credit addressed to this auction - No exceptions.

HARRY H. BACHMAN
AUCTIONEER
118 College Avenue, Harrisburg, PA 17101
(717) 667-1000

Auction by
**LEBANON VALLEY
NATIONAL BANK**
Trust Group as Agent
(717) 274-6864

939613

- SEALED BID SALE -

General Public Invited

**BID DEADLINE: WEDNESDAY, NOVEMBER 17th -
4:00 P.M.**

PUBLIC SERVICE ELECTRIC & GAS CO. SOUTH PLAINFIELD, NEW JERSEY
(5 Miles North of Exit 10 NJ Turnpike)

MACHINE SHOP EQUIPMENT, MOTORS, WELDERS & SUPPLIES

**AIR COMPRESSORS, PUMPS, HVAC SYSTEM, PLATE, PIPE TEST EQUIPMENT,
HOIST, ELECTRICAL SUPPLIES, PLANT PARTS**

NOTICE: PSE&G is selling Material and Equipment surplus to its present needs. Everything in this Sale belongs to PSE&G.

LOCATION: The surplus is located at the PSE&G M.A.R.C. Warehouse, 3630 Kennedy Rd., S. Plainfield, NJ, approx. 5 miles north of Exit 10 of the NJ Turnpike off I-287.

**LATHES, RADIAL DRILL, GRINDERS
HOIST, WELDERS & SUPPLIES**

REED PRENTICE 14" Engine Lathe; RAHN CARMON 24" Gap Lathe; MONARCH 16" Engine Lathe; L&S 18" Engine Lathe; SHELDON 14" Engine Lathe; CINCINNATI No. 3 Horiz. Mill; ROCKFORD 20" Shaper; CINCINNATI 4x11 Radial Drill, plus (5) Grinders; (4) 12"-2" OSTER Threaders; Welders; ACORN 5'x5' Table; ROCKWELL Drilling Mach.; COFFING 5 Ton Elec. Hoist; Shop Presses; Sheet Metal Equip; Manlift; Misc. Shop Equip.

(90) ELECTRIC MOTORS,

AIR COMPRESSORS & PUMPS

OVER 90 NEW: 1/4 hp to 50 hp 1-ph. & 3-ph. Elec. Motors; G.E. 150 hp Elec. Motor; Gear Reducers; Motor Parts; DELAVAL 7650 cfm HP/LP Centrifugal Air Compr., s/n 261089; (2) I-R DL1200 Port. Air Comprs.; WEST 3000 hp 4160V 3-ph. Elec. Motor; KINNEY

KD-78 Vacuum Pump; (3) ROOTS Gas Pumps; (4) Centrifugal Pumps; Misc. Pump Parts; (4 pallets) Bearings; Conveyor Chain; PPC 35HAY-0000C Heat-Les Dryer; LG QTY: Fire Bricks.

**HVAC SYSTEM, TEST EQUIPMENT,
HOIST, SPARE PARTS**

LIEBERT Series 3000 Air Condition System, s/n 54966A; (9) DERITEND Hot Foil FRP Heating Panels; TENNEY BTRS H/C Lab Chamber; L&N Chart Recorders; HONEYWELL Controllers; CHESTER 10 Ton Trolley Hoist; (2 pallets) Welding Rod; Gang Box; (12 pallets) PRATT & WHITNEY Jet Turbine Engine Parts; LG QTY: Turbine, Pump & Other Power Plant Spare Parts.



**SEALED BID
SERVICES, INC.**

1044 Bethlehem Pike
Montgomeryville, Pa 18936
215-542-7787