



# FARMER BOY AG INC.



Your Complete Swine Building & Equipment Center



**2000 HEAD FINISHER**  
**★ PA'S OLDEST & MOST EXPERIENCED SWINE BUILDING & EQUIPMENT COMPANY**

**ADD INCOME TO YOUR FARM**  
**CONTACT FARMER BOY AG... Your Professional Company**

- Assistance In Securing Building Permits
- Assistance In Nutrient Management Planning
- Custom Design
- Assistance In Financing

## HIRED-HAND

*The name you trust -*  
**The products you can depend on!**

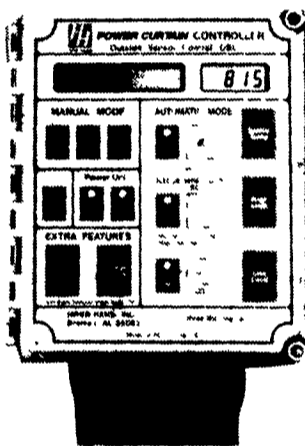


**SUPER SAVER® HEATER**

**FUNNEL FLOW® FAN**



**POWER CURTAIN®**



**SYSTEM CONTROLLER**  
 System 2000 is a new, eight-stage curtain and ventilation controller from Hired Hand. All system operations are menu-driven. It can adapt to any ventilation mode as it manages heaters, fans, foggers and curtains or doors. It can go from negative ventilation to natural to tunnel automatically.

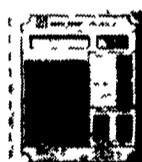


**ALERT ALARM®**



**CURT-O-MATIC® POWER FAILURE DROP**

**AUTHORIZED MASTER DISTRIBUTOR**



**AUTO TEMP 12-STAGE CONTROLLER SYSTEM**

### ENERGY EFFICIENT ENCLOSED MOTORS

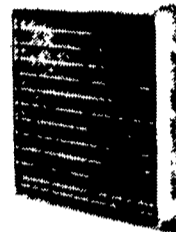


- Heavy-duty totally enclosed motors with sealed ball bearings are designed for continuous work load.
- Available in two-speed.
- Built-in thermal overload for low line-voltage protection on all single phase motors.

**SEE US FOR YOUR REMODELING NEEDS**

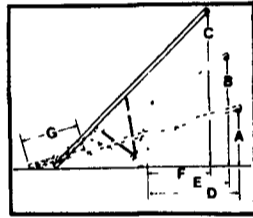
### ALUMINUM SHUTTERS:

- All Aluminum Construction
- Counter Balanced Blades
- Nylon Bearing
- Stainless Steel Hinge Pins
- \* Low Air Resistance \*
- \* Reduces Sticking in Dusty and Moist Conditions \*



## WESTFIELD GRAIN AUGERS

### 51" TRANSPORT AUGER



	A	B	C	D	E	F	G	
	HEIGHT LOWERED	HEIGHT HALFWAY	HEIGHT RAISED	REACH LOWERED	REACH HALFWAY	REACH RAISED	INTAKE REACH	WHEEL TREAD

### CURTAINS-Clear Or Insulated Hardware Winches



### SAVE 30% On Your Electric Bill w/Our 175 Watt Heat Bulb



**Long Lasting 5,000 Hours**  
 These 175 watt heat lamp bulbs put out as much heat as a 250 watt bulb but use 30% less electricity at \$.10 per K.W.H. that's \$37.50 over the life of your lamp. Even better, if you run 40 lamps that's a savings of \$1,500.00. Bulbs are Heavy Duty Industrial type with high brass base and are resistant to urine and water splash damage, so you'll save even more on those costly breakage problems.  
 15 bulbs/case

## DOSMATIC PLUS

### MEDICATOR



**DP20 EZM**

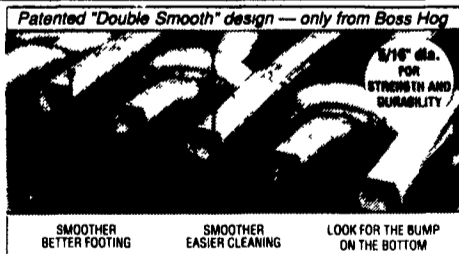
Water Driven Liquid Injector

## NEW



**BOSS HOG**

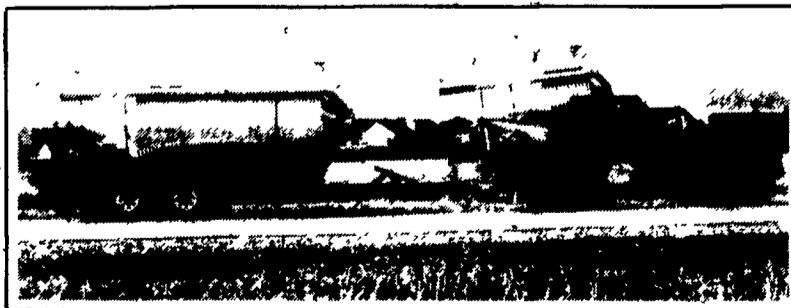
**HEAVIEST WIRE FLOORING MADE**



Patented "Double Smooth" design — only from Boss Hog  
 5/16" dia. FOR STRENGTH AND DURABILITY  
 SMOOTHER BETTER FOOTING    SMOOTHER EASIER CLEANING    LOOK FOR THE BUMP ON THE BOTTOM  
 Boss Hog's patented "Double Smooth" design plus the strength and durability of its exclusive 5/16" diameter wire make this your best flooring buy! Insist on Boss Hog, the wire with the bump on the bottom. From the nation's largest manufacturer of animal flooring.

## QUALITY BINS

We Assemble, Deliver & Set-Up Bins On Your Farm



Full Line Of Parts In Stock For Your Poultry And Hog Needs



24 Hour Service

Swine & Poultry Systems Specialists  
**FARMER BOY AG. INC.**  
 410 E LINCOLN AVE (RT 422)    MYERSTOWN, PA 17067

**PH. 717-866-7565**

Hours: M-F 7:00-5:00; Sat. 7:30-11:30

Check Our Warehouse Prices

WE SHIP UPS



11-8

### SEE JAY OR PAUL FOR YOUR



JAY ZIMMERMAN — Sales

**PARTS AND EQUIPMENT NEEDS**



PAUL HIGH — Sales