

TRUCKS AND EQUIPMENT IN STOCK AT HOSTETLERS

8' Pickup Truck Flatbeds, All Steel Construction, Bulkhead & Rear Light Skirt..... \$595

9' Truck Flatbeds for Dual Wheel One Ton Trucks, With or Without Gooseneck Compartment, Bulkhead and Rear Light Skirt..... Starting At \$595

12' Stake Body Flatbed for Truck, Tread-plate Floor, Bulkhead, Stake Pockets with Rub Rail. Stake Sides Available..... \$920

16' Knapheide Grain Body, Heavy Duty Construction, 3/16" Smooth Steel Floor, 12" Crossmember Spacing, 40" Grain Sides with Rear Grain Gate..... \$2,595

16' Aluminum Grain Body, 48" High Sides, Dump Thru Tailgate..... \$4,995

1978 International, V8 Gas, 5 & 2 Speed, Low Miles, Nice Truck, Cab & Chassis..... \$2,995

GMC Tandem, V8 Gas, 5&2 Speed, Air Brakes, 40,000# GVW, Will Take 18' Grain Body..... \$5,950

1984 Ford Grain Truck, V8 Gas, 5 & 2 Speed, New 14' Knapheide Grain Body with 40" Grain Sides, and 14 Ton Hoist..... \$10,900

Call for any additional information and prices



Hostetler Truck Bodies & Trailers
Rt. 322 Milroy, PA 17063
(717) 667-3921

Bittner Boys, Inc.
Quality Chevy V8 Motors for Cars, Trucks and Boats. We Install And Deliver. 35 Years Of Experience
717/762-7940

Liquid Waste Hauler



1974 AUTOCAR with 5,000 gal. pressure vac. tank 350 CFM walley vac pump 8" load valve Mfg. 10-93. 18-Fr. 44R. Cummins power, super clean truck for year
\$26,500 (without floater tires)
(717) 626-9050

REMWELD

Custom Built Steel & Aluminum Trailers
Livestock, Flatbeds and Goosenecks
Call For Reasonable Prices
(717) 966-9188

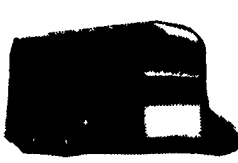
THIS WEEK'S SPECIALS

CAR DOLLIES



96" 3500# Complete With Straps
\$795 Each

Stock Trailers



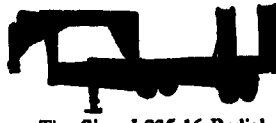
16 Ft. Sale **\$2,800**
12 Ft. Sale **\$2,600**

L-2 Dumpster



6x10
Removable Sides
7000 GVW
SALE \$2,795

Gooseneck Trailers



FEATURES:
14,000 G.V.W. (2) Axles
Flip-Up Beavertail
I-Beam Design
Stake Pockets With Rub Rail
Adjustable Gooseneck
Electric Brakes On All Axles
Drop Leg Jack

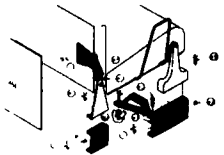
Tire Size -L235-16 Radial Load Range
8'x20' Deck Length
8'x24' Deck Length
PRICE \$3695
Any Size, Your Choice

SPECIALISTS IN FARM & LANDSCAPE EQUIPMENT

Ringo Hill Farms Equipment Co., Inc.

1624 Route 212 Pleasant Valley Quakertown PA 18951 (215) 346-7340 FAX (215) 346-8011

Ford Super Cab Rear Seat Lift Kit



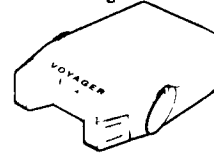
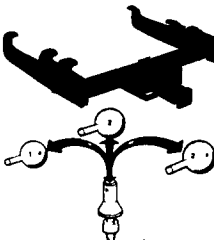
Raises seat 4" for more comfort. Includes all hardware & instructions.
\$79.95 Free Shipping!
PA Residents Add \$4.80 Tax
Weaver Distributing
1-800-WEAVER-D
RD 2 Box 470
Frederickburg, PA 17028

1979 International S Model 1624, 16,000 GVW, 345 4bbl gas engine, 4 speed transmission, 2 speed rear, 14' dump bed with dividers and good tarp, 7.50x20 rubber, power steering. \$7500.

1986 Ford F250 Heavy 3/4 t. pickup with high sideboards and good tarp, 300 cu. in. 6 cyl. power steering, 4 spd., 16" rubber, 8600 GVW \$5,000

717-442-4160
7:30-9AM 4-5:30 PM

TRAILER HITCHES
Quality & Price



See Our Inventory Reduction Sale Ad On Page B15

- ★ Free Catalog
- ★ MC/Visa/Disc
- ★ UPS Shipping

Weaver Distributing
1-800-Weaver-D
1-800-932-9373
Fax 717-965-2067

JONES
PONTIAC • HONDA
GMC TRUCK
1335 Manheim Pike, Lancaster
717-394-0711

JONES BEST BUY USED TRUCKS

| | | | |
|---|--|---|---|
| '92 CHEV 1/2 CARGO VAN V8, AT, AC, Factory Vehicle, 2 To Choose From #7433 SALE \$12,400 Each | '91 CHEV SUBURBAN 4x4 Silverado, 9 Pass, 350, AT, AC, Loaded #7724 Was \$21,500 SALE \$18,500 | '89 GMC X CAB Sierra Classic, 350, AT, AC, #7824 Was \$14,400 SALE \$11,750 | DIESEL NEW '93 GMC C30 6.5 Turbo, AT, AC, Dually, SLE #1943 Was \$24,393 SALE \$20,577 |
| '92 CHEV X CAB 4x4 Silverado, Sportside, 350, AT, AC #7745 Was \$18,995 SALE \$16,900 | '91 FORD F150 PICKUP XLT, AT, AC, V8, 30,000 Miles #7804 Was \$14,100 SALE \$11,700 | '88 PLYMOUTH VOYAGER 4 Cyl., AT, 7 Pass., AC, #7836 Was \$5,995 SALE \$4,700 | DIESEL '90 CHEV BLAZER AT, Silverado, AC, 6.2 Liter, Diesel #7768 Was \$18,900 SALE \$15,700 |
| '88 CHEV K10 4x4 4 Spd., 350, AC, Scottsdale, #7823 Was \$10,995 SALE \$9,100 | '88 JEEP WRANGLER LAREDO V6, 5 Spd., Hard Top #7810 Was \$10,900 SALE \$8,750 | '91 FORD F250 CLUB CAB 4x4 460 V8, AT, AC, XLT, Dark Blue #7756 Was \$18,700 SALE \$18,700 | '89 JEEP GRAND WAGONEER 4x4, AT, AC, Pwr. Seat, V8, 26,000 Miles #7779 Was \$15,900 SALE \$15,900 |
| '92 CHEV 1/2 TON 4x4 Silverado, 350, AT, AC, #7766 Was \$19,900 SALE \$17,900 | '88 CHEV SUB SILVERADO 350, AT, AC, Black #7790 Was \$8,995 SALE \$6,975 | '84 CHEV K BLAZER Diesel, AT, 6.2 Liter, 39,000 Miles #7809 Was \$7,995 SALE \$5,700 | '87 DODGE CARAVAN LE AT, AC, V6 #7814 Was \$6,995 SALE \$5,100 |
| '88 CHEV SUBURBAN Silverado, 350, AT, AC & More #7696 Was \$12,400 SALE \$9,100 | '92 CHEV BEAUVILLE VAN 15 Pass, AT, AC, 350, 20,000 Miles, Vinyl Seats #7800 Was \$18,900 SALE \$17,000 | '87 CHEV K BLAZER Silverado, AT, AC, V8, 57,000 Miles #7806 Was \$11,495 SALE \$9,750 | '91 CHEV K10 4x4 Sportside, V8, AT, AC, #7807 Was \$17,995 SALE \$15,200 |

Prices based on straight sale, Tax & Tags extra. Trades accepted at actual cash value
Must present this ad at time of purchase for sale price.