

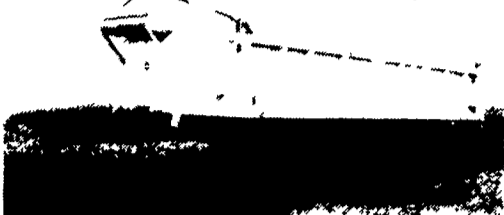
KEENS

SERVICES INC.

Trailers

- Sales
- Service
- Rentals
- Leasing

Lititz, PA
(717) 626-5420
"Since 1963"



1969 Montone Dump, 25' box, 29' frame, recent cylinder work\$3,200
1987 48'x102" Dropdecks, Air Ride, Excellent Condition\$10,900

New 24' gooseneck 9 ton trailer, tandem dual wheels w/hide-away ramps, \$5,900. New high strength aluminum flat truck bed, 9'x92", tapered headache rack and stake pockets, \$1,895. Ask for Tom, (717)766-5147.

Roll-Away service ladder for trailers, 4'x13' w/ platform, on wheels, excellent condition, \$500. (717)359-9888.

MOTORS

New & Rebuilt
350, 366,
427, 454

6.2 Diesels
Rebuilt & Used

Will Install
Roll Back Service
(at cost)
717-762-6415



1975 5 Spd. Mack 237
Overhauled Engine With 10,000 Mi.,
New Wetline Pump, New Tires, New
Paint, Nice Interior, Ready To Go
Good Truck!
\$9,000 Or Best Offer
717/524-2673

35 TRUCKS & TRAILERS



AUTO BODY & SALES

1701 B Division Hwy
New Holland, PA • 717-355-0644

Specializing in Rebuilt Collision Damage Vehicles

Coming In.



'89 S-10 EXT. CAB
Shortbox, 2.8 FI, 5 Spd.,
54,000 Mi., Needs Front,
PA Title
\$2,850

'89 FORD F-250
5.8 FI Auto., PS, PB,
64,000 Mi., Light Front
Damage, Bed Rough,
8600 GVW
\$2,850

'92 CHEVY S-10 TAHOE
2.8 FI, 5 Spd., PS, PB,
Long Bed, 24,000 Mi., Light
Front Damage, Rt. Hand
Bed Side, Factory Blade
\$3,900

1993 Dodge 250 & 350

Cummins Diesel Club Cabs (Dually's)

20 To Choose

- * 5 Speed Automatic
- * 2 & 4 Wheel Drive
- * Dual Rear Wheels



5.9 Cummins
Diesel
Engines

JONES GM PARTS CENTER

IS YOUR

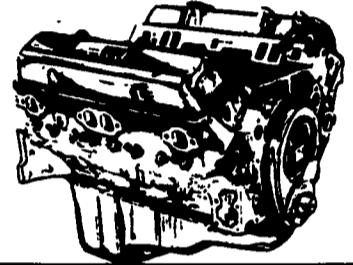
Goodwrench ENGINE HEADQUARTERS

GM GOODWRENCH 350 V8 1973-85
Part Number 10067353

New Engine - Not Rebuilt
36 Month or 50,000 Mile
Warranty

\$1199⁰⁰

New Engine - No Core Fee



HIGH PERFORMANCE ENGINES NOW IN STOCK
350-300 H.P. — **\$1695⁰⁰** 350-345 H.P. — **\$2825⁰⁰**

Call 394-0711 for prices on other New or Remanufactured Goodwrench Engines. 2.5 Liter thru 454 cid. Gas and Diesel

Chevrolet - Pontiac - Olds - Buick - Cadillac - GMC

JONES GM PARTS CENTER

1335 Manheim Pike, Lancaster, PA 17604

Hours: Mon.-Fri. 7:30-5
(717) 394-0711



Mr. Goodwrench



Joe Dell's L&B

DODGE CHRYSLER PLYMOUTH



King Of The Dakota's!

ROUTE 422, ROBESONIA, PA. (215) 693-5855

1-800-800-2623

Huntingdon Equipment

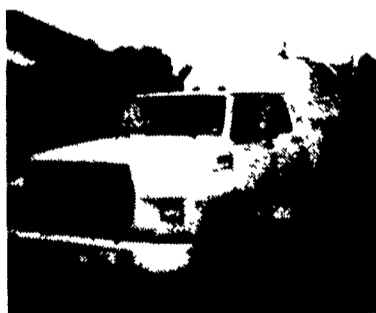
Rentals Available

GOOD USED EQUIPMENT

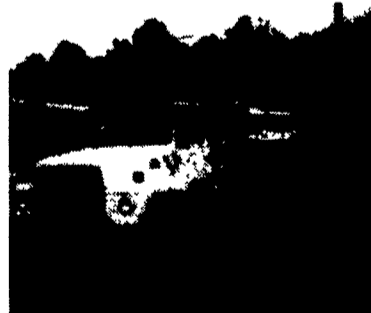
Huntingdon Valley, PA • 215-672-9667 • 1-800-543-3833 • Eddie



20 Ton P&H Crane 3 Sec. Hyd. Boom mounted on a 1988 F.W.D. both engine gas (new front 89), fleet maintenance.



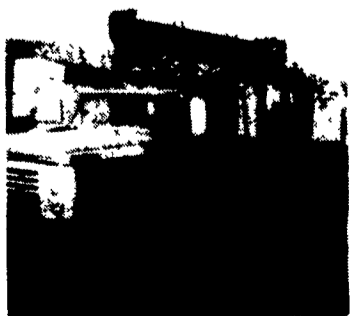
1985 F-600 8.2 Diesel, Auto, 5 Man Cab, Utility With Rollup Door On Rear, Clean, Low Mileage, 1 of 3.



1979 Ford V8 10-Speed, Air, 14,000 Lbs. Boom, 2 Speed Auger, Upper Controls, 4 Outrigger, Dig Holes-Lift-Put Man In Air. This Unit Does It All.



Holan 70' Double Bucket 75' working height mounted on 1981 Western Standard, 6x6 Flatbed, CAT 3208, Auto.



Need a Lift? We Have A Large Selection Of Boom Trucks Up To 14,000 lbs. Cap. Some With Post Diggers.



Bucket Trucks 28' to 65' Gas and Diesel. Call For Details.

DIGGER DERRICKS/AERIAL BUCKETS/UTILITY EQUIPMENT

1987 CHEVY S-10 EXTENDED CAB
4x4, 2.8 Liter Pkg., Air, Tilt
\$7,200

1979 CHEVY C-35 CAB & CHASSIS
8' x 92" Eby Aluminum Flatbed, 1 Ton/10,000 GVW, Dual Wheels, Set Up To Tow Gooseneck Or B.H., 350, 4 Spd.
\$4,500
OBO

CALL 717-738-0480 Ephrata After 6 PM

1986 Ford F-250
300 Cubic Inch, 6 Cyl., 4 Speed, PS, PB, AM-FM Cass., Dual Tanks, Dark Blue Finish
\$4,500

Countryside Auto Sales
Manheim, PA
717-664-2170 Office
717-865-3488 Home